

ZT Miniature Relays

2/4 pole, 5 A

ZT2*** 2 changeover contacts, IP 40
 ZT5*** 4 changeover contacts, IP 40,
 with additional insulating ribs

For dc or ac operation, neutral, monostable
 PCB mounting or plug-in, AMP 2,8 (solder terminals)

Mechanical and electrical operating
 state indicator (option)

With test button; new test button system:
 - protected against accidental contact
 - can be locked by means of a lever
 integrated into the cap
 - test button can be operated from the front

White label for markings

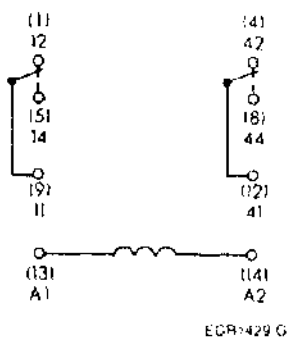
Contact material cadmium free

VDE, SEV, UL, CSA

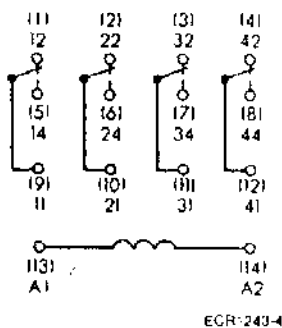
Approximate weight: 31 g

Base terminals

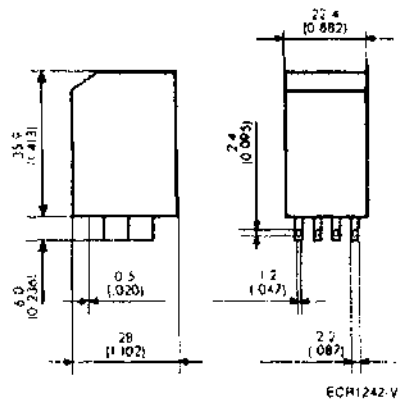
ZT2 2 changeover contacts, 2 pole



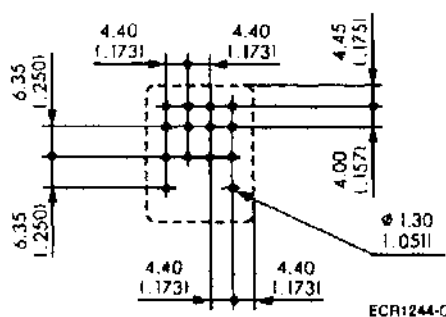
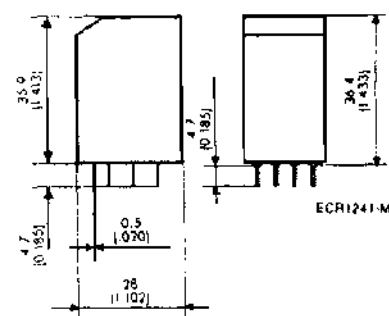
ZT5 4 changeover contacts, 4 pole



Solder pins or plug pins



PCB mounting terminals



Mounting hole layout
 View from the wiring side

All dimensions in mm (inches)

ZT Miniature Relays

Relays

Rated voltage	250 Vac
Max. contact voltage	440 Vac
Rated current	5 A
Make current (max. 4 s at 10 % duty cycle)	10 A
Nominal power rating	1250 VA

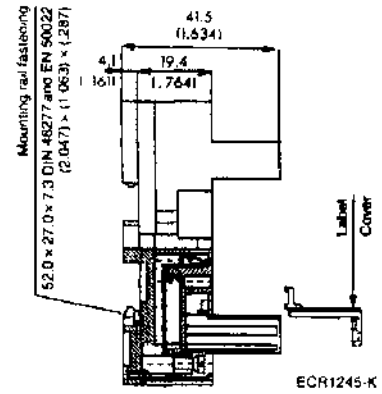
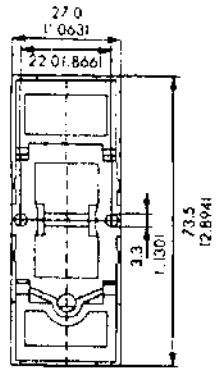
Contact material: AgNi 90/10

Rated voltage	Voltage range at 20°C	Coil resistance at 20°C	Ordering code	DU	Price each			
					Pcs	DU+	100	500
Vdc	Vdc	Ω						
DC operating voltage								
PCB mounting terminals, 4 changeover contacts								
▽ 24	18,0 ... 38,4	520 ± 10 %	ZT571024	25				
plug-in terminals, 2 changeover contacts								
24	18,0 ... 38,4	520 ± 10 %	ZT270024	25				NEW
plug-in terminals, 4 changeover contacts								
▽ 12	9,0 ... 19,2	160 ± 10 %	ZT570012	25				
▽ 24	18,0 ... 38,4	520 ± 10 %	ZT570024	25				
48	36,0 ... 76,8	2100 ± 10 %	ZT570048	25				NEW
60	45,0 ... 96,0	3300 ± 12 %	ZT570060	25				NEW
110	82,5 ... 176,0	12000 ± 15 %	ZT570110	25				NEW
220	165,0 ... 352,0	44000 ± 15 %	ZT570220	25				NEW
plug-in terminals, 4 changeover contacts, with LED								
▽ 24	18,0 ... 38,4	520 ± 10 %	ZT570L24	25				
plug-in terminals, 4 changeover contacts, with LED and recovery diode								
▽ 24	18,0 ... 38,6	520 ± 10 %	ZT570LC4	25				
AC operating voltage								
plug-in terminals, 2 changeover contacts								
24	19,2 ... 26,4	176 ± 10 %	ZT270524	25				NEW
230	184,5 ... 253,0	17100 ± 15 %	ZT270730	25				NEW
plug-in terminals, 4 changeover contacts								
12	9,6 ... 13,2	45 ± 10 %	ZT570512	25				NEW
▽ 24	19,2 ... 26,4	176 ± 10 %	ZT570524	25				
48	38,4 ... 52,8	740 ± 10 %	ZT570548	25				NEW
115	92,0 ... 126,5	4300 ± 12 %	ZT570615	25				NEW
▽ 230	184,5 ... 253,0	17100 ± 15 %	ZT570730	25				
plug-in terminals, 4 changeover contacts, with LED								
24	19,2 ... 26,4	176 ± 10 %	ZT570R24	25				NEW
▽ 230	184,5 ... 253,0	17100 ± 15 %	ZT570T30	25				

ZT Miniature Relays Accessories

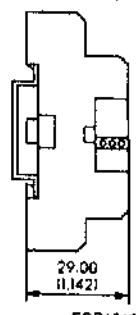
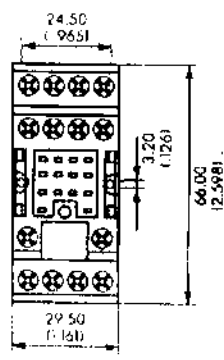
Sockets with screw terminals

ZG78700 und ZG78110



ECR1245-K

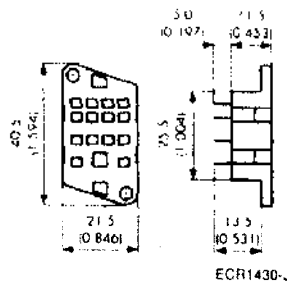
RA78728 incl. retainer



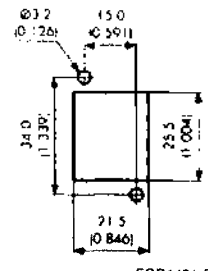
ECR1246-T

Sockets with soldering terminals

ZG78750



ECR1430-J

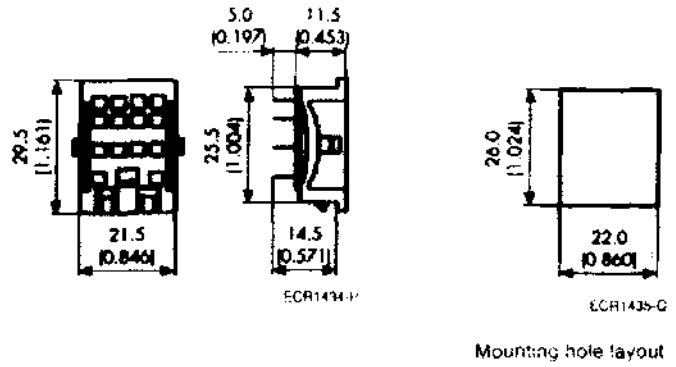


ECR1431-S

Mounting hole layout

ZT Miniature Relays Accessories

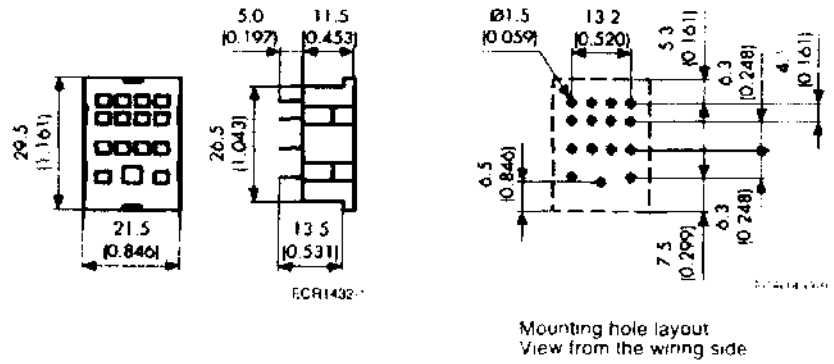
ZG78753



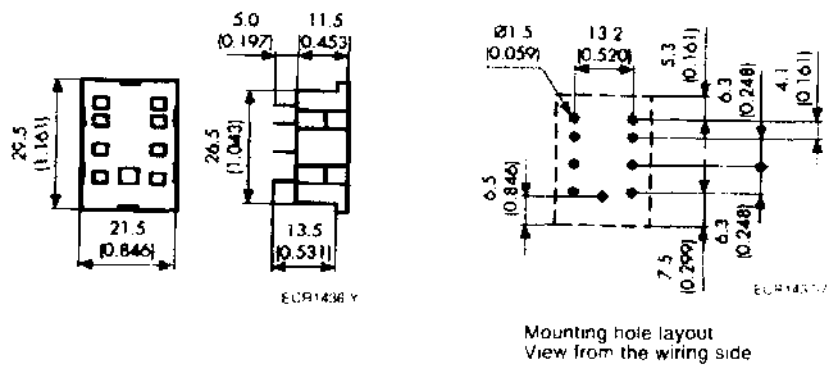
Relays

Sockets with PCB mounting terminals

ZG78752



ZG78759



ZT Miniature Relays Accessories

Accessories	Ordering code	DU	Price each			
			Pcs	DU+	100+	500+
Socket with screw terminals, 4 pole, for DIN rail mounting	ZG78700	25				
Socket with screw terminals, 4 pole, for DIN rail mounting wit recovery diode	ZG78110	25				
Retainer for Sockets ZG78700 and ZG78110	ZG28801	25				
Socket with screw terminals, 4 pole, for DIN rail mounting (incl. retainer)	RA78728	10				
Socket with soldering terminals, 4 pole, with mounting holes	ZG78750	25				NEW
Socket with soldering terminals, 4 pole	ZG78753	25				NEW
Socket with PCB mounting terminals, 4 pole	ZG78752	25				NEW
Socket with PCB mounting terminals, 2 pole	ZG78759	25				NEW
Retainer for Sockets ZG78750/752/753 and ZG78759	ZG28800	25				NEW