

- Formerly TLP298
- 2-A Output Current Capability Per Full-H Driver
- Applications Include Half-H and Full-H Solenoid Drivers and Motor Drivers
- Wide Range of Output Supply Voltage  
5 V to 46 V
- Separate Input-Logic Supply Voltage  
Thermal Shutdown
- Internal Electrostatic Discharge Protection
- High Noise Immunity
- 3-State Outputs
- Minimized Power Dissipation
- Sink/Source Interlock Circuitry Prevents Simultaneous Conduction
- Improved Functional Replacement for the SGS L298

## description

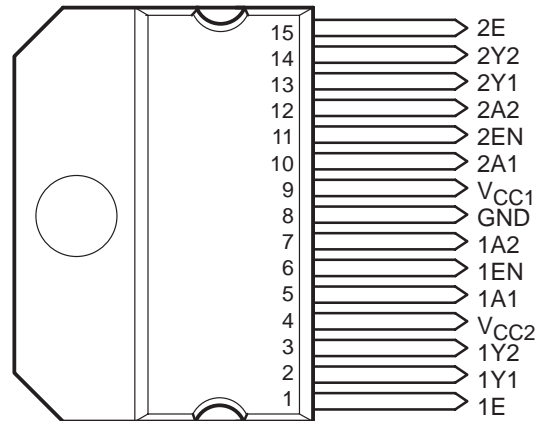
The TPIC0298 is a dual high-current full-H driver designed to provide bidirectional drive currents of up to 2 A at voltages from 5 V to 46 V. It is designed to drive inductive loads such as relays, solenoids, dc motors, stepping motors, and other high-current or high-voltage loads in positive-supply applications. All inputs are TTL compatible. Each output (Y) is a complete totem-pole drive with a Darlington transistor sink and a pseudo-Darlington source. Each full-H driver is enabled separately. Outputs 1Y1 and 1Y2 are enabled by 1EN and outputs 2Y1 and 2Y2 are enabled by 2EN. When an EN input is high, the associated channels are active. When an EN input is low, the associated channels are off (i.e., in the high-impedance state).

Each half of the device forms a full-H reversible driver suitable for solenoid or motor applications. The current in each full-H driver can be monitored by connecting a resistor between the sense output terminal 1E and GND and another resistor between sense output terminal 2E and GND.

External high-speed output-clamp diodes should be used for inductive transient suppression. To minimize device power dissipation, a  $V_{CC1}$  supply voltage, separate from  $V_{CC2}$ , is provided for the logic inputs.

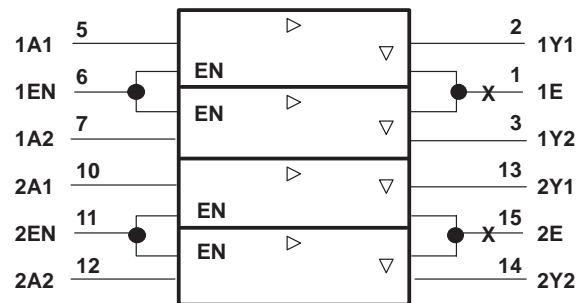
The TPIC0298 is designed for operation from 0°C to 70°C.

KV PACKAGE  
(TOP VIEW)



The tab is electrically connected to GND.

## logic symbol†



† This symbol is in accordance with ANSI/IEEE Std 91-1984 and IEC Publication 617-12.

FUNCTION TABLE

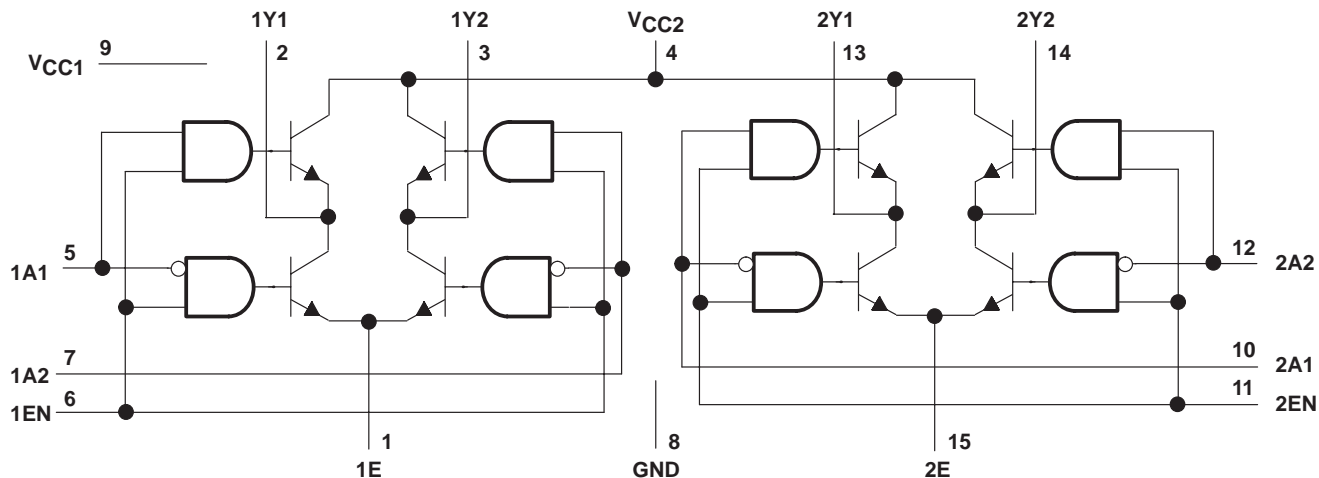
INPUTS		OUTPUT
A	EN	Y
H	H	H
L	H	L
X	L	Z

H = high-level , L = low-level  
X = irrelevant  
Z = high-impedance (off)

# TPIC0298 DUAL FULL-H DRIVER

SLIS006 – D2942, JUNE 1987 – REVISED JANUARY 1990

## logic diagram (positive logic)



## absolute maximum ratings over operating temperature range (unless otherwise noted)

Logic supply voltage range, $V_{CC1}$ (see Note 1)	–0.3 V to 7 V
Output supply voltage range, $V_{CC2}$	–0.3 V to 50 V
Input voltage range at A or EN, $V_I$ (see Note 2)	–1.6 V to 7 V
Output voltage range, $V_O$	–2 V to $V_{CC2} + 2$ V
Emitter terminal (1E and 2E) voltage range, $V_E$	–0.5 V to 2.3 V
Emitter terminal (1E and 2E) voltage (nonrepetitive, $t_w \leq 50 \mu\text{s}$ )	–1 V
Input current at A or EN, $I_I$	–15 mA
Peak output current, $I_{OM}$ : (nonrepetitive, $t_w \leq 0.1$ ms)	$\pm 3$ A
(repetitive, $t_w \leq 10$ ms, duty cycle $\leq 80\%$ )	$\pm 2.5$ A
Continuous output current, $I_O$	$\pm 2$ A
Peak combined output current for each full-H driver (see Note 3):	
(nonrepetitive, $t_w \leq 0.1$ ms)	$\pm 3$ A
(repetitive, $t_w \leq 10$ ms, duty cycle $\leq 80\%$ )	$\pm 2.5$ A
Continuous combined output current for each full-H driver (see Note 3)	$\pm 2$ A
Continuous dissipation at (or below) 25°C free-air temperature (see Note 4)	3.575 W
Continuous dissipation at (or below) 75°C case temperature (see Note 4)	25 W
Operating free-air, case, or virtual junction temperature range	–40°C to 150°C
Storage temperature range	–65°C to 150°C
Lead temperature 1,6 mm (1/16 inch) from case for 10 seconds	260°C

- NOTES: 1. All voltage values are with respect to the network GND, unless otherwise noted.
2. The maximum current limitation at this terminal generally occurs at a voltage of lower magnitude than the voltage limit. Neither the maximum current nor the maximum voltage for this terminal should be exceeded.
3. Combined output current applies to each of the two full-H drivers individually. This current is the sum of the currents at outputs 1Y1 and 1Y2 for full-H driver 1 and the sum of the currents at outputs 2Y1 and 2Y2 for full-H driver 2. The full-H drivers can carry the rated combined current simultaneously.
4. For operation above 25°C free-air temperature, derate linearly at the rate of 28.6 mW/°C. For operation above 75°C case temperature, derate linearly at the rate of 333 mW/°C. Due to variations in individual device electrical characteristics and thermal resistance, the built-in thermal overload protection may be activated at power levels slightly above or below the rated dissipation.

**recommended operating conditions**

		MIN	MAX	UNIT
Logic supply voltage, $V_{CC1}$		4.5	7	V
Output supply voltage, $V_{CC2}$		5	46	V
Emitter terminal (1E or 2E) voltage, $V_E$ (see Note 5)		-0.5 <sup>†</sup>	2	V
		$V_{CC1}-3.5$	$V_{CC2}-4$	
High-level input voltage, $V_{IH}$ (see Note 5)	A	2.3	$V_{CC1}$	V
	EN	$V_{CC2}-2.5$	7	
			$V_{CC1}$	
Low-level input voltage at A or EN, $V_{IL}$		-0.3 <sup>†</sup>	1.5	V
Output current, $I_O$			±2	A
Communication frequency			40	kHz
Operating free-air temperature, $T_A$		0	70	°C

<sup>†</sup> The algebraic convention, in which the least positive (most negative) limit is designated as minimum, is used in this data sheet for emitter terminal voltage and logic voltage levels.

NOTE 5: For optimum device performance, the maximum recommended voltage at any A input is 2.5 V lower than  $V_{CC2}$ , the maximum recommended voltage at any EN input is  $V_{CC1}$ , and the maximum recommended voltage at any emitter terminal is 3.5 V lower than  $V_{CC1}$  and 4 V lower than  $V_{CC2}$ .

**electrical characteristics over recommended ranges of  $V_{CC1}$ ,  $V_{CC2}$ , and  $V_E$ ,  $T_J = 25^\circ\text{C}$  (unless otherwise noted)**

PARAMETER		TEST CONDITIONS		MIN	TYP <sup>†</sup>	MAX	UNIT
$V_{IK}$	Input clamp voltage	$I_I = -12\text{ mA}$			-0.9	-1.5	V
$V_{OH}$	High-level output voltage	$I_{OH} = -1\text{ A}$		$V_{CC2}-1.8$	$V_{CC2}-1.2$		V
		$I_{OH} = -2\text{ A}$		$V_{CC2}-2.8$	$V_{CC2}-1.8$		
$V_{OL}$	Low-level output voltage	$I_{OL} = 1\text{ A}$			$V_E+1.2$	$V_E+1.8$	V
		$I_{OL} = 2\text{ A}$			$V_E+1.7$	$V_E+2.6$	
$V_{drop}$	Total source pulse sink output voltage drop	$I_{OH} = -1\text{ A}$ , $I_{OL} = 1\text{ A}$	See Note 6		2.4	3.4	V
		$I_{OH} = -2\text{ A}$ , $I_{OL} = 2\text{ A}$			3.5	5.2	
$I_{OZH}$	Off-state (high-impedance state) output current, high-level voltage applied	$V_O = V_{CC2}$				500	μA
$I_{OZL}$	Off-state (high-impedance state) output current, low-level voltage applied	$V_O = 0\text{ V}$ , $V_E = 0\text{ V}$				-500	μA
$I_{IH}$	High-level input current	A	$V_I = V_{IH}$	EN = H	20	100	μA
			EN = L		10		
		EN	$V_I = V_{IH} \leq V_{CC1} - 0.6\text{ V}$		6	100	
$I_{IL}$	Low-level input current	$V_I = 0\text{ V to } 1.5\text{ V}$				-10	μA
$I_{CC1}$	Logic supply current	$I_O = 0$	All outputs at high level		7	12	mA
			All outputs at low level		20	32	
			All outputs at high impedance		4	6	
$I_{CC2}$	Output supply current	$I_O = 0$	All outputs at high level		25	50	mA
			All outputs at low level		6	20	
			All outputs at high impedance			2	

<sup>†</sup> All typical values are at  $V_{CC1} = 5\text{ V}$ ,  $V_{CC2} = 42\text{ V}$ ,  $V_E = 0\text{ V}$ ,  $T_J = 25^\circ\text{C}$  (unless otherwise noted).

NOTE 6: The  $V_{drop}$  specification applies for  $I_{OH}$  and  $I_{OL}$  applied simultaneously to different output channels:

$$V_{drop} = V_{CC2} - V_{OH} + V_{OL} - V_E$$



# TPIC0298

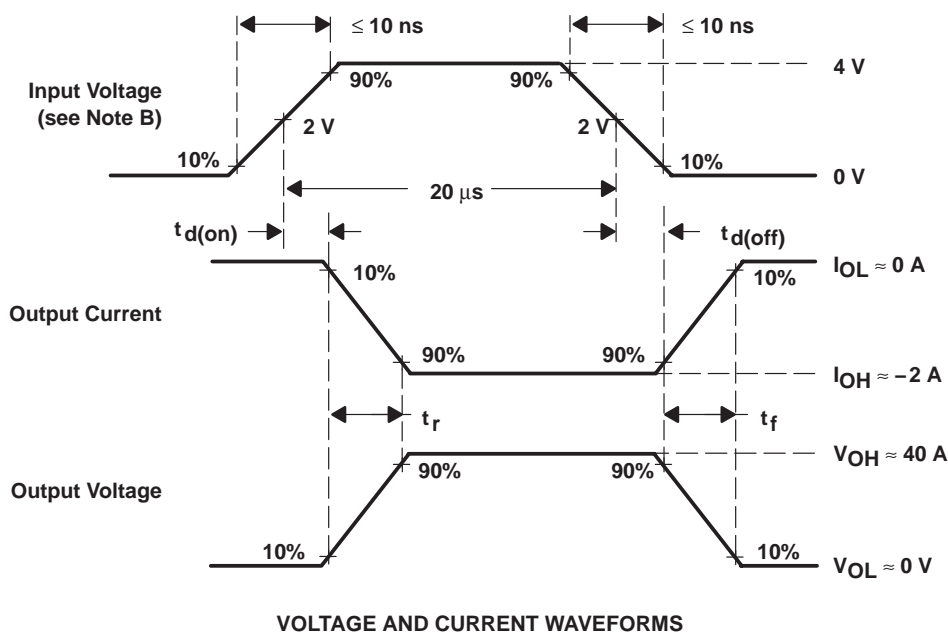
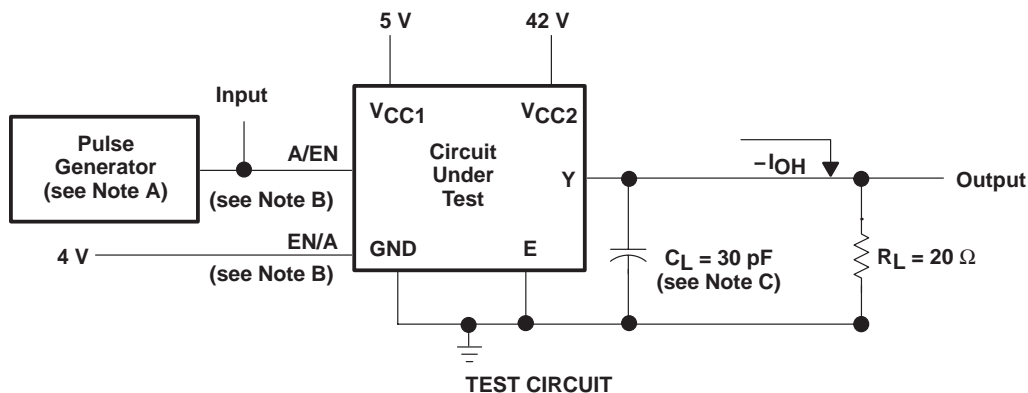
## DUAL FULL-H DRIVER

SLIS006 – D2942, JUNE 1987 – REVISED JANUARY 1990

switching characteristics,  $V_{CC1} = 5\text{ V}$ ,  $V_{CC2} = 42\text{ V}$ ,  $V_E = 0$ ,  $T_A = 25^\circ\text{C}$

PARAMETER	TEST CONDITIONS	MIN	TYP	MAX	UNIT	
$t_{d(on)}$ Turn-on delay time, source current from A input	$C_L = 30\text{ pF}$ , See Figure 1		0.6		$\mu\text{s}$	
$t_{d(off)}$ Turn-off delay time, source current from A input			0.8		$\mu\text{s}$	
$t_r$ Rise time, source current (turning on)				0.8		$\mu\text{s}$
$t_f$ Fall time, source current (turning off)				0.2		$\mu\text{s}$
$t_{d(on)}$ Turn-on delay time, source current from EN input				0.5		$\mu\text{s}$
$t_{d(off)}$ Turn-off delay time, source current from EN input				2.5		$\mu\text{s}$
$t_{d(on)}$ Turn-on delay time, sink current from A input	$C_L = 30\text{ pF}$ , See Figure 2		1.3		$\mu\text{s}$	
$t_{d(off)}$ Turn-off delay time sink current from A input				0.5		$\mu\text{s}$
$t_r$ Rise time, sink current (turning on)				0.2		$\mu\text{s}$
$t_f$ Fall time, sink current (turning off)				0.2		$\mu\text{s}$
$t_{d(on)}$ Turn-on delay time, sink current from EN input				0.3		$\mu\text{s}$
$t_{d(off)}$ Turn-off delay time, sink current from EN input				1		$\mu\text{s}$

PARAMETER MEASUREMENT INFORMATION



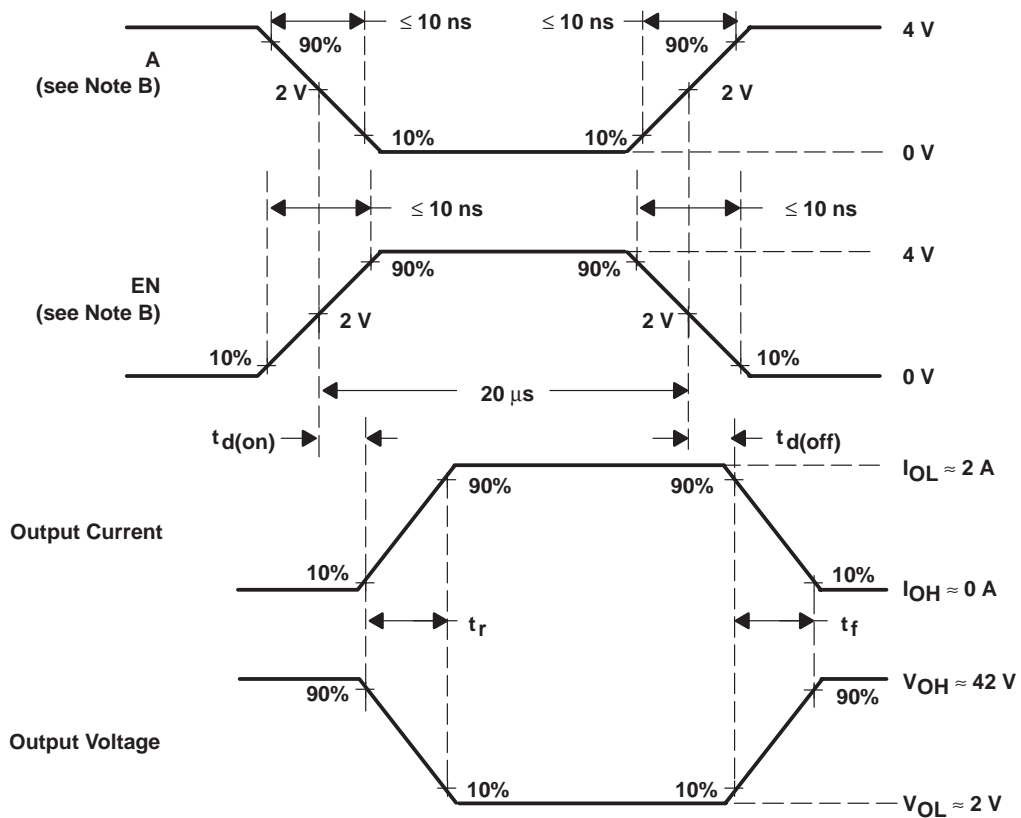
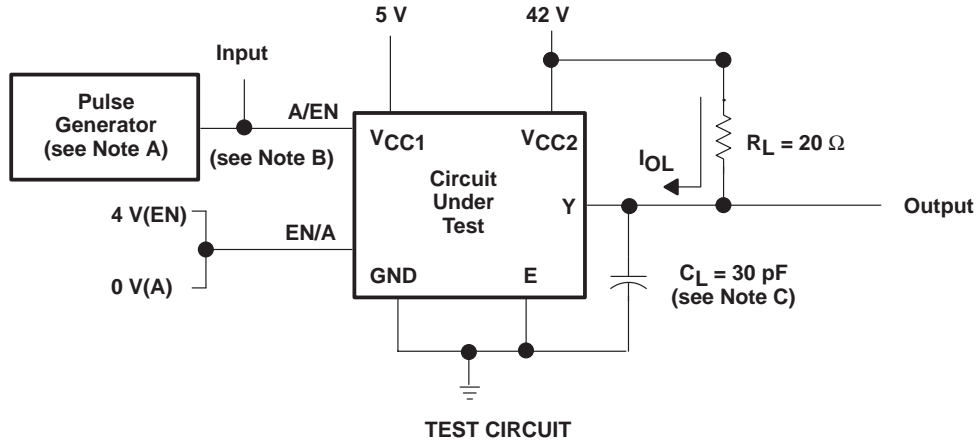
- NOTES: A. The pulse generator has the following characteristics: PRR = 2 kHz,  $Z_O = 50 \Omega$ .  
 B. EN is at 4 V if A is used as the switching input. A is at 4 V if EN is the switching input.  
 C.  $C_L$  includes probe and jig capacitance.

Figure 1. Source Current Test Circuit and Waveforms From Data and Enable Inputs

# TPIC0298 DUAL FULL-H DRIVER

SLIS006 – D2942, JUNE 1987 – REVISED JANUARY 1990

## PARAMETER MEASUREMENT INFORMATION



### VOLTAGE AND CURRENT WAVEFORMS

- NOTES: A. The pulse generator has the following characteristics: PRR = 2 kHz,  $Z_O = 50\ \Omega$ .  
 B. EN is at 4 V if A is used as the switching input. A is at 0 V if EN is the switching input.  
 C.  $C_L$  includes probe and jig capacitance.

**Figure 2. Sink Current Test Circuit and Voltage Waveforms From Data and Enable Inputs**

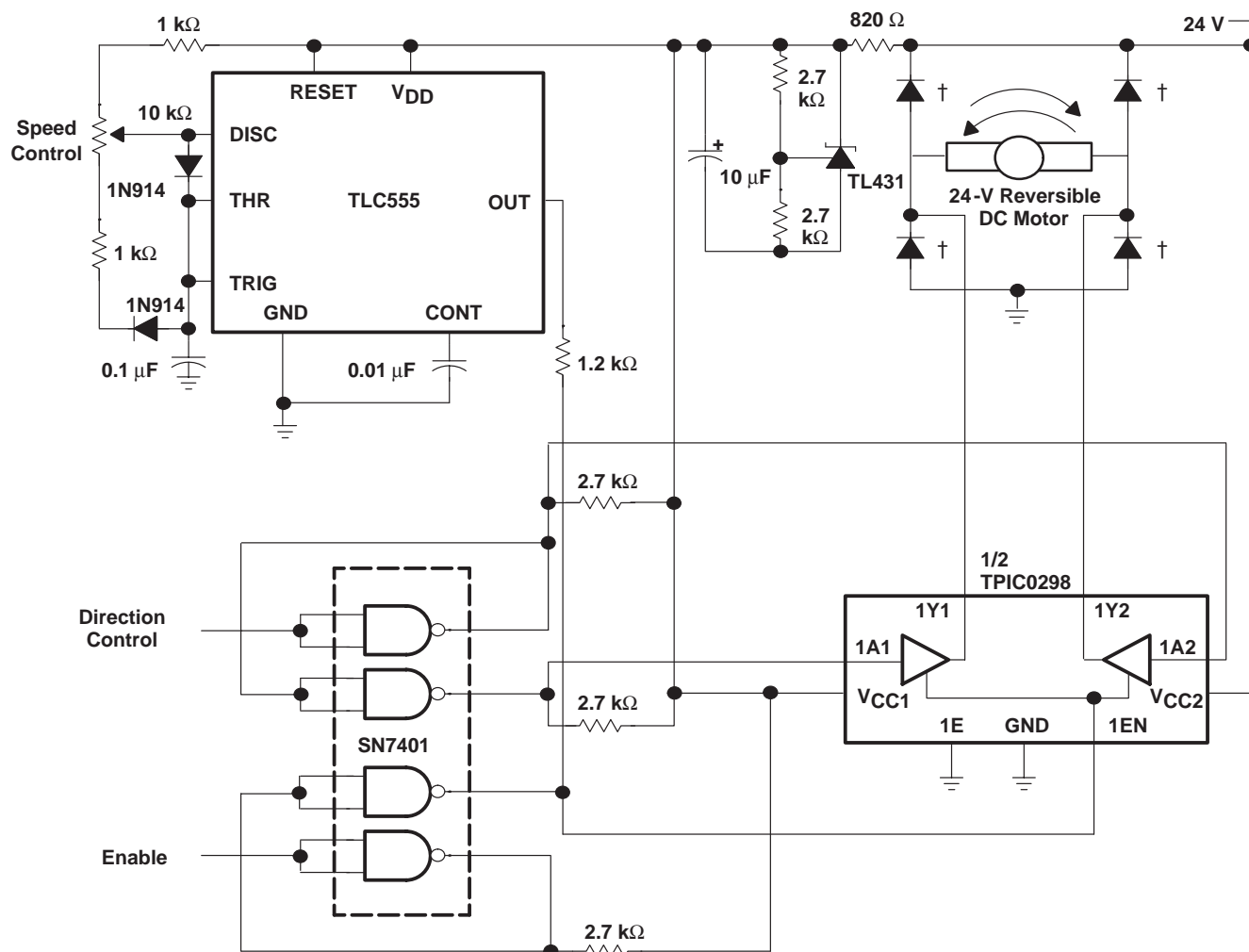
APPLICATION INFORMATION

This circuit shows one half of a TPIC0298 used to provide full-H bridge drive for a 24-V, 2-A dc motor. Speed control is achieved with a TLC555 timer. This provides variable duty-cycle pulses to the EN input of the TPIC0298. In this configuration, the operating frequency is approximately 1.2 kHz. The duty cycle is adjustable from 10% to 90% to provide a wide range of motor speeds. The motor direction is determined by the logic level at the direction control input. The circuit can be enabled or disabled by the logic level at the EN input. A 5-V supply for the logic and timer circuit is provided by a TL431 shunt regulator. For circuit operation, refer to the function table.

FUNCTION TABLE

ENABLE	DIRECTION CONTROL	1Y1	1Y2
H	H	Source	Sink
H	L	Sink	Source
L	X	Disabled	Disabled

X = don't care H = high level L = low level



† Diodes are 1N4934 or equivalent.

Figure 3. TPIC0298 as Bidirectional-DC Motor Drive



## IMPORTANT NOTICE

Texas Instruments Incorporated and its subsidiaries (TI) reserve the right to make corrections, modifications, enhancements, improvements, and other changes to its products and services at any time and to discontinue any product or service without notice. Customers should obtain the latest relevant information before placing orders and should verify that such information is current and complete. All products are sold subject to TI's terms and conditions of sale supplied at the time of order acknowledgment.

TI warrants performance of its hardware products to the specifications applicable at the time of sale in accordance with TI's standard warranty. Testing and other quality control techniques are used to the extent TI deems necessary to support this warranty. Except where mandated by government requirements, testing of all parameters of each product is not necessarily performed.

TI assumes no liability for applications assistance or customer product design. Customers are responsible for their products and applications using TI components. To minimize the risks associated with customer products and applications, customers should provide adequate design and operating safeguards.

TI does not warrant or represent that any license, either express or implied, is granted under any TI patent right, copyright, mask work right, or other TI intellectual property right relating to any combination, machine, or process in which TI products or services are used. Information published by TI regarding third-party products or services does not constitute a license from TI to use such products or services or a warranty or endorsement thereof. Use of such information may require a license from a third party under the patents or other intellectual property of the third party, or a license from TI under the patents or other intellectual property of TI.

Reproduction of TI information in TI data books or data sheets is permissible only if reproduction is without alteration and is accompanied by all associated warranties, conditions, limitations, and notices. Reproduction of this information with alteration is an unfair and deceptive business practice. TI is not responsible or liable for such altered documentation. Information of third parties may be subject to additional restrictions.

Resale of TI products or services with statements different from or beyond the parameters stated by TI for that product or service voids all express and any implied warranties for the associated TI product or service and is an unfair and deceptive business practice. TI is not responsible or liable for any such statements.

TI products are not authorized for use in safety-critical applications (such as life support) where a failure of the TI product would reasonably be expected to cause severe personal injury or death, unless officers of the parties have executed an agreement specifically governing such use. Buyers represent that they have all necessary expertise in the safety and regulatory ramifications of their applications, and acknowledge and agree that they are solely responsible for all legal, regulatory and safety-related requirements concerning their products and any use of TI products in such safety-critical applications, notwithstanding any applications-related information or support that may be provided by TI. Further, Buyers must fully indemnify TI and its representatives against any damages arising out of the use of TI products in such safety-critical applications.

TI products are neither designed nor intended for use in military/aerospace applications or environments unless the TI products are specifically designated by TI as military-grade or "enhanced plastic." Only products designated by TI as military-grade meet military specifications. Buyers acknowledge and agree that any such use of TI products which TI has not designated as military-grade is solely at the Buyer's risk, and that they are solely responsible for compliance with all legal and regulatory requirements in connection with such use.

TI products are neither designed nor intended for use in automotive applications or environments unless the specific TI products are designated by TI as compliant with ISO/TS 16949 requirements. Buyers acknowledge and agree that, if they use any non-designated products in automotive applications, TI will not be responsible for any failure to meet such requirements.

Following are URLs where you can obtain information on other Texas Instruments products and application solutions:

### Products

Amplifiers	<a href="http://amplifier.ti.com">amplifier.ti.com</a>
Data Converters	<a href="http://dataconverter.ti.com">dataconverter.ti.com</a>
DSP	<a href="http://dsp.ti.com">dsp.ti.com</a>
Clocks and Timers	<a href="http://www.ti.com/clocks">www.ti.com/clocks</a>
Interface	<a href="http://interface.ti.com">interface.ti.com</a>
Logic	<a href="http://logic.ti.com">logic.ti.com</a>
Power Mgmt	<a href="http://power.ti.com">power.ti.com</a>
Microcontrollers	<a href="http://microcontroller.ti.com">microcontroller.ti.com</a>
RFID	<a href="http://www.ti-rfid.com">www.ti-rfid.com</a>
RF/IF and ZigBee® Solutions	<a href="http://www.ti.com/lprf">www.ti.com/lprf</a>

### Applications

Audio	<a href="http://www.ti.com/audio">www.ti.com/audio</a>
Automotive	<a href="http://www.ti.com/automotive">www.ti.com/automotive</a>
Broadband	<a href="http://www.ti.com/broadband">www.ti.com/broadband</a>
Digital Control	<a href="http://www.ti.com/digitalcontrol">www.ti.com/digitalcontrol</a>
Medical	<a href="http://www.ti.com/medical">www.ti.com/medical</a>
Military	<a href="http://www.ti.com/military">www.ti.com/military</a>
Optical Networking	<a href="http://www.ti.com/opticalnetwork">www.ti.com/opticalnetwork</a>
Security	<a href="http://www.ti.com/security">www.ti.com/security</a>
Telephony	<a href="http://www.ti.com/telephony">www.ti.com/telephony</a>
Video & Imaging	<a href="http://www.ti.com/video">www.ti.com/video</a>
Wireless	<a href="http://www.ti.com/wireless">www.ti.com/wireless</a>

Mailing Address: Texas Instruments, Post Office Box 655303, Dallas, Texas 75265  
Copyright © 2008, Texas Instruments Incorporated