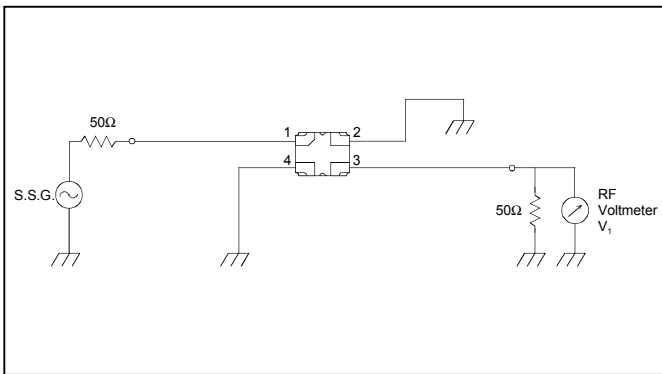


## Feature

1. High Attenuation (at 1350 to 1360MHz ; 40 dB min.)
2. High Selectivity (at  $f_c + 50\text{MHz}$  ; 40 dB max.  
at  $f_c - 50\text{MHz}$  ; 38 dB max.)
3. Small SMD package (SS22 package)

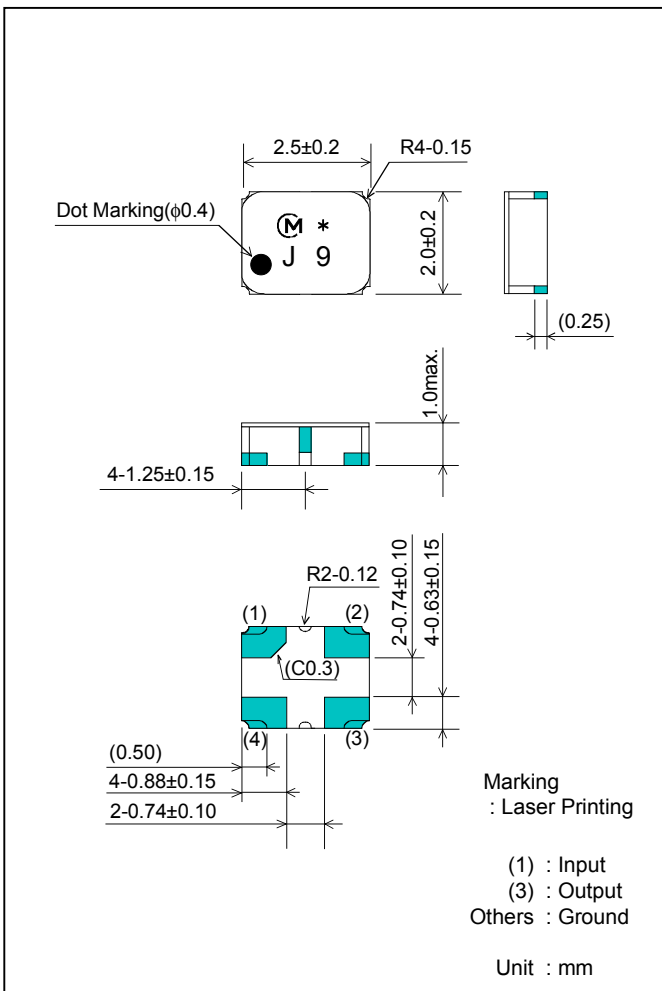
## Test Circuit



## Specification (-30 to +85°C)

Item	Specification
Nominal Center Frequency ( $f_c$ )	1575.5 MHz
Insertion Loss (1574 to 1577MHz)	2.5 dB max.
Absolute Attenuation	
1) 0.1 to 960 MHz	40 dB min.
2) 1350 to 1360 MHz	40 dB min.
3) 1429 to 1525 MHz	38 dB min.
4) 1626 to 1661 MHz	40 dB min.
5) 1850 to 1910 MHz	35 dB min.
6) 1920 to 1980 MHz	35 dB min.
7) 2110 to 2170 MHz	35 dB min.
8) 2400 to 2500 MHz	32 dB min.
Ripple Deviation (1574 to 1577MHz)	0.7 dB max.
VSWR (1574 to 1577MHz)	1.6 max.
Input / Output Impedance (nominal)	50Ω

## Package Dimensions



## Frequency Characteristics

