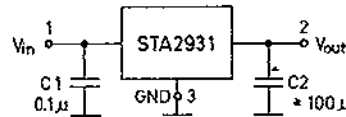


STA2931 5 V Car Voltage Regulator (TO-92 Plastic Package "A")

The STA2931 is a 5 V positive voltage regulator with a very low quiescent current and an extremely low input-output differential required for proper regulation. This IC is primarily designed for automotive applications.

Features

- very low quiescent current
- output current in excess of 150 mA
- input-output differential less than 0.8 V
- reverse battery protection
- short circuit protection
- mirror-image insertion protection
- internal thermal overload protection
- 60 V load dump protection
- -50 V reverse transient protection



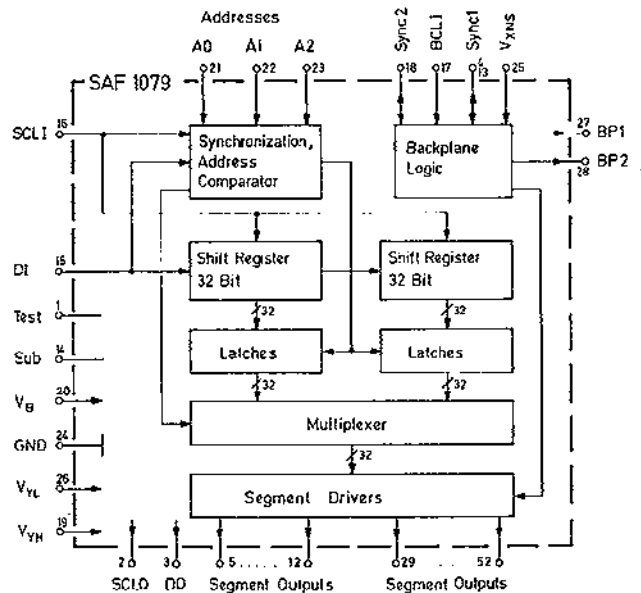
STA2931 Application Circuit

SAF1079 LCD Display Driver (52-Pin DIL Plastic SMD Package)

This VLSI circuit in CMOS technology is intended for driving a liquid-crystal display. Optionally, static or dynamic (two-fold multiplex) display modes can be selected. In static operation, four digits of eight segments each can be driven. In dynamic multiplex operation, this number is doubled to eight digits. The SAF1079 LCD Display Driver can also be cascaded, one IC being the master which supplies the backplane signals, with up to seven slaves, so that eight times eight giving sixty-four digits can be driven by eight SAF1079 ICs.

The information on the segments to be displayed is fed to the ICs via a Data and a Clock line. The sequence of the segments displayed is given by the sequence of the valid Data, i.e. the first Data bit controls segment 0, the 64th bit segment 63. Output BP1 is used as the backplane signal for Data bits 0 to 31, and BP2 for bits 32 to 63.

The master IC processes the DI (Data Input), SCLI (Shift Clock Input) and BCLI (Backplane Clock Input) signals. Data and shift clock are supplied for driving the slaves, by the DO and SCLO outputs. The BCLI backplane clock is divided by 128 internally and is available at the Sync 1 output for cascading. Three address inputs A0 to A2 are provided for deciding which of the cascaded drivers receives the information supplied by the Data line. Static or dynamic operation is selected by the V_{XNS} input.



SAF1079 Block Diagram