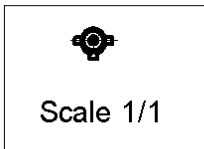
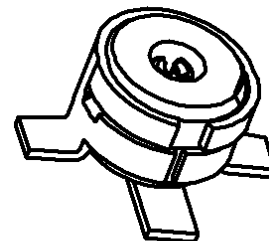
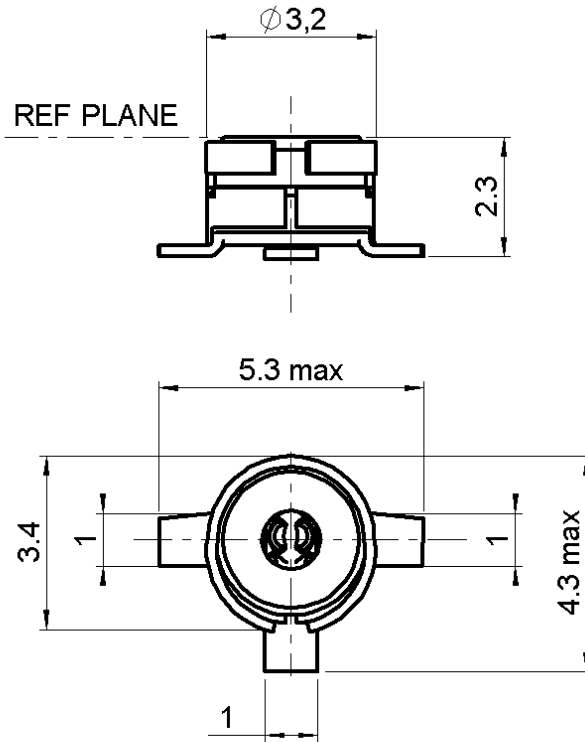


**STRAIGHT FEMALE RECEPTACLE FOR PCB**

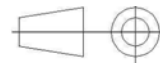
**R209.408.302**

**SMT TYPE - REEL OF 3000**

Series : MMS



All dimensions are in mm.



COMPONENTS	MATERIALS	PLATINGS (µm)
BODY	PHOSPHOR BRONZE	.GOLD 0.2 OVER NICKEL 2
CENTER CONTACT	BERYLLIUM COPPER	GOLD 0.2 OVER TIN NICKEL 2
OUTER CONTACT	PHOSPHOR BRONZE	.GOLD 0.2 OVER NICKEL 2
INSULATOR	PTFE	
GASKET	-	-
OTHERS PARTS	-	-
-	-	-
-	-	-

Issue : 0742 A

In the effort to improve our products, we reserve the right to make changes judged to be necessary.



**STRAIGHT FEMALE RECEPTACLE FOR PCB**

**R209.408.302**

**SMT TYPE - REEL OF 3000**

Series : MMS

**PACKAGING**

**SPECIFICATION**

Standard	Unit	Other
<b>3000</b>	-	<b>Contact us</b>

**ELECTRICAL CHARACTERISTICS**

Impedance		<b>50</b> Ω
Frequency		<b>0-6</b> GHz
VSWR	* +	<b>0,0000</b> x F(GHz) Maxi
Insertion loss	**	√F(GHz) dB Maxi
RF leakage	- (	<b>NA</b> - F(GHz)) dB mini
Voltage rating		<b>50</b> Veff Maxi
Dielectric withstanding voltage		<b>250</b> Veff mini
Insulation resistance		<b>500</b> MΩ mini

**ENVIRONMENTAL**

Operating temperature	<b>-40/+125</b> ° C
Hermetic seal	<b>NA</b> Atm.cm3/s
Panel leakage	<b>NA</b>

**OTHERS CHARACTERISTICS**

Assembly instruction

Others :

\*1.2 à 2GHz/Avg 1,07 \*\*Max 0.07/Avg 0.06

**MECHANICAL CHARACTERISTICS**

Center contact retention		
Axial force – Mating end	<b>NA</b>	N mini
Axial force – Opposite end	<b>NA</b>	N mini
Torque	<b>NA</b>	N.cm mini
Recommended torque		
Mating	<b>NA</b>	N.cm
Panel nut	<b>NA</b>	N.cm
Mating life	<b>50</b>	Cycles mini
Weight	<b>0,1000</b>	g

Issue : 0742 A

In the effort to improve our products, we reserve the right to make changes judged to be necessary.



**STRAIGHT FEMALE RECEPTACLE FOR PCB**

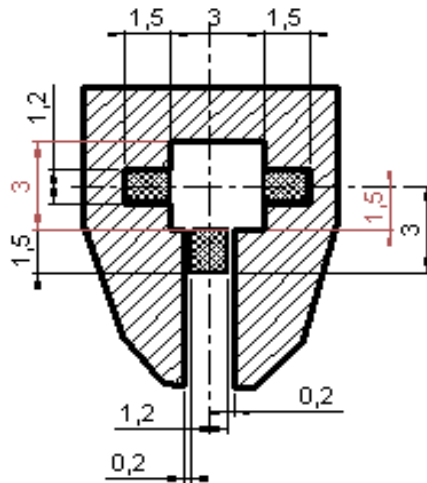
**R209.408.302**

**SMT TYPE - REEL OF 3000**

Series : MMS

**MMS SERIES – INFORMATION**

Coplanar line : Ground and signal are on the same side . Thickness of PCB : 1mm  
 The material of PCB is glass-epoxy composite. (Er = 4.8 )  
 The solder resist should be printed except for the land pattern on the PCB.

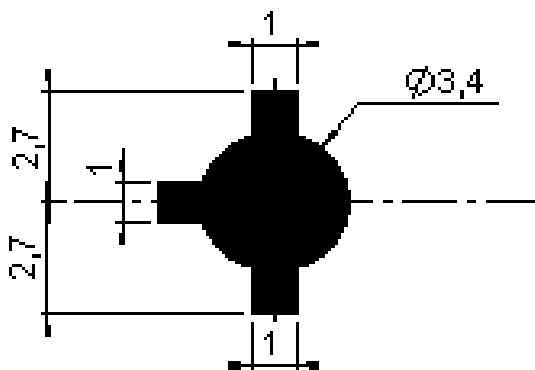


Pattern

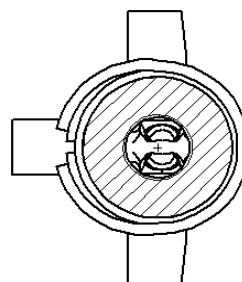


Land for solder paste

**SHADOW OF MMS RECEPTACLE FOR VIDEO CAMERA**



**ASPIRATION AREA**



ASPIRATION AREA

Issue : 0742 A

In the effort to improve our products, we reserve the right to make changes judged to be necessary.



**RADIALL**®

**STRAIGHT FEMALE RECEPTACLE FOR PCB**

**R209.408.302**

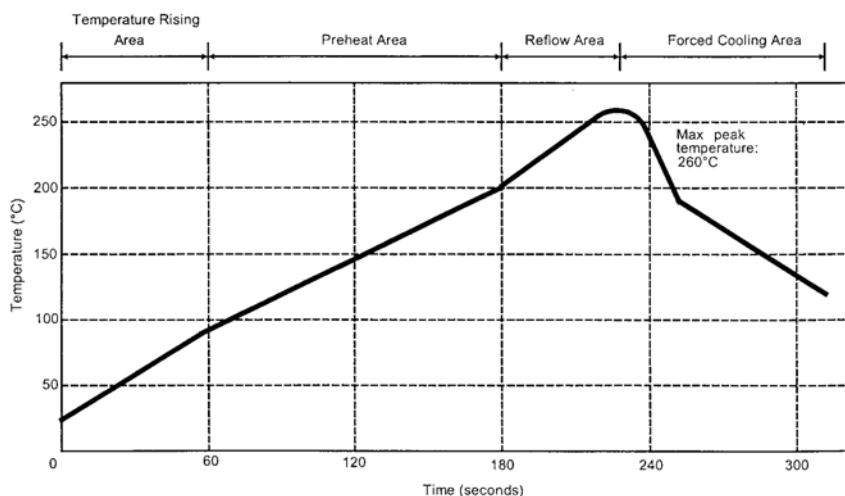
**SMT TYPE - REEL OF 3000**

Series : MMS

**SOLDER PROCEDURE**

1. Deposit solder paste 'SnAg4Cu0.5' on mounting zone by screen printing application. We recommend a low residue flux.  
We advise a thickness of 150 micromm ( 5.850 microinch ). Verify that the edges of the zone are clean.
2. Placement of the receptacle on the mounting zone with an automatic machine of 'pick and place' type.
3. Soldering by infra-red reflow.
4. Cleaning of printed circuit boards.
5. Checking of solder joints and position of the component by visual inspection.

**TEMPERATURE PROFILE**



Parameter	Value	Unit
Temperature rising Area	1 - 4	°C/sec
Max Peak Temperature	260	°C
Max dwell time @260°C	10	sec
Min dwell time @235°C	20	sec
Max dwell time @235°C	60	sec
Temperature drop in cooling Area	-1 to - 4	°C/sec
Max dwell time above 100°C	420	sec

Issue : 0742 A

In the effort to improve our products, we reserve the right to make changes judged to be necessary.

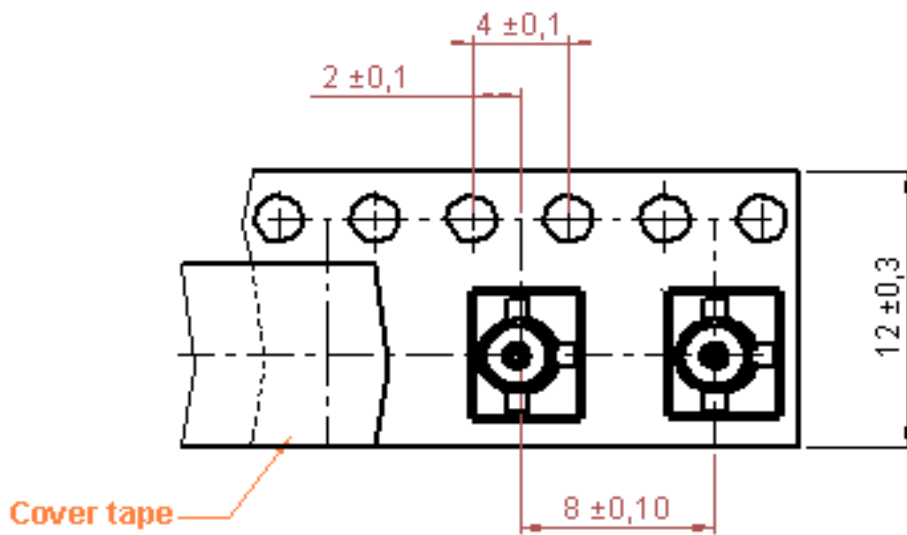
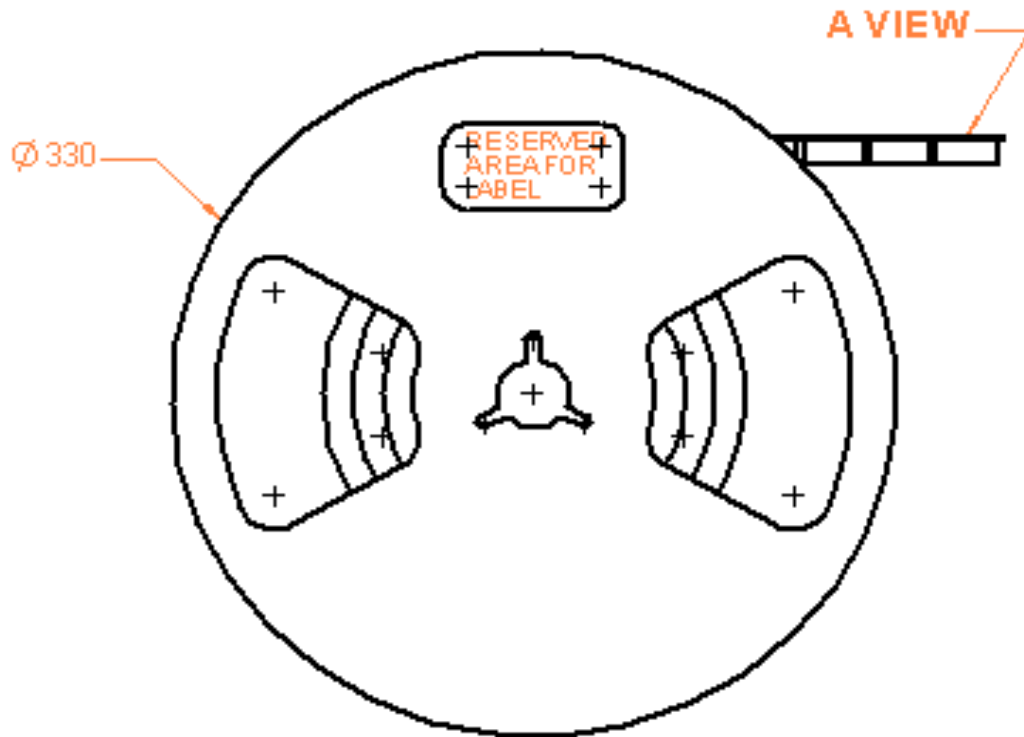


**STRAIGHT FEMALE RECEPTACLE FOR PCB**

**R209.408.302**

**SMT TYPE - REEL OF 3000**

Series : MMS



**A VIEW ( scale : 4 )**

Issue : 0742 A

In the effort to improve our products, we reserve the right to make changes judged to be necessary.

