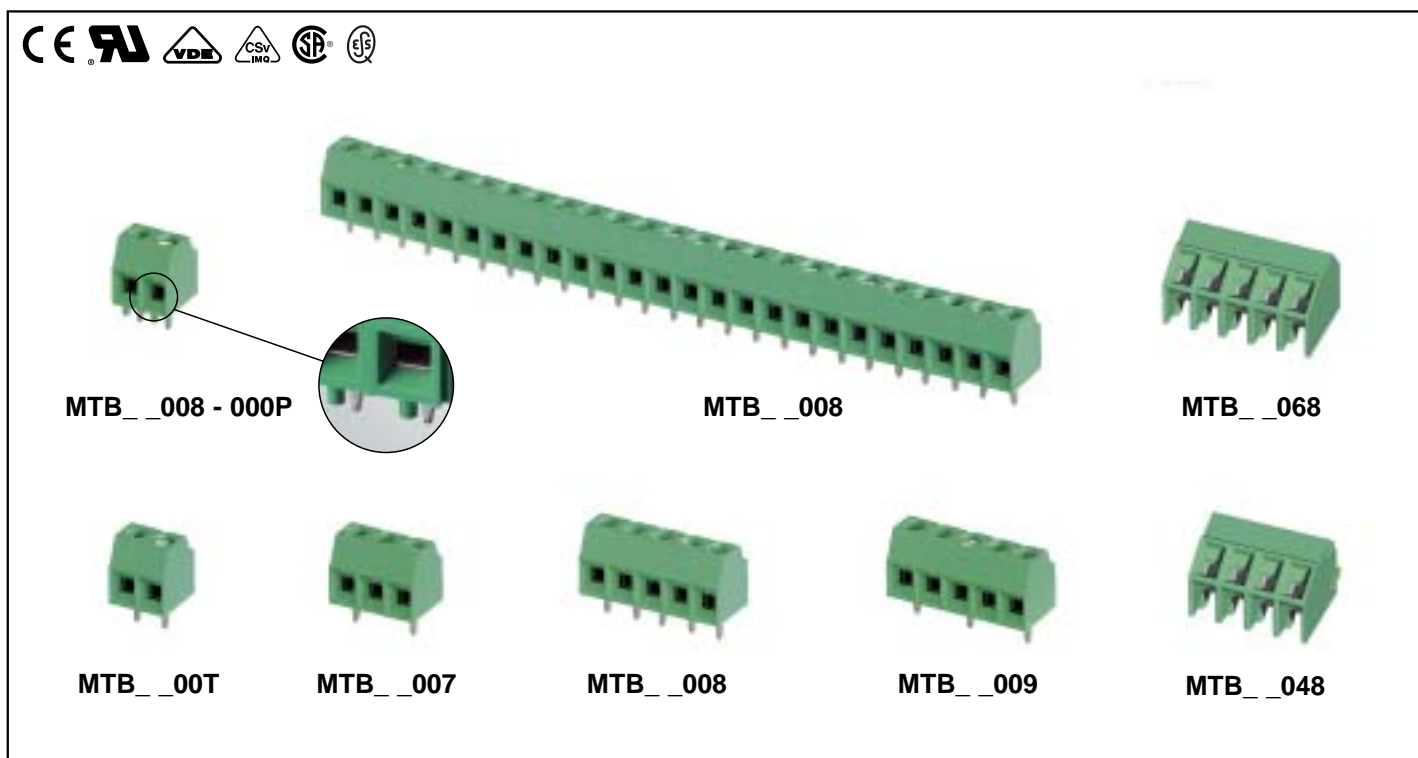




Dimensional Class: LOW
Standard Color: GREEN
Height: .335 in (8.5 mm) Straight - .374 in (9.5 mm) 55°
Cage Clamp Opening Size: .065 x .067 in (1.65 x 1.7 mm)
Wire Diameter: max. .065 in (2.13 mm)
Versions: Side Stackable, Modular
Single Mold Poles: from 2 to 25 (Straight), from 2 to 18 (55°)
Metric Pitches: .138 in (3.5 mm), .275 in (7 mm) - Straight and 55°
Imperial Pitches: .150 in (3.81 mm), .300 in (7.62 mm) - Straight

Classe Dimensionale: BASSA
Colore Standard: VERDE
Altezza: 8,5 mm Diritto - 9,5 mm 55°
Apertura Introduzione Filo: 1,65 x 1,7 mm
Diametro Filo Inseribile: max. 1,65 mm (2,13 mm²)
Versioni: Affiancabile, Modulare
Vie Monolitiche: da 2 a 25 (Diritto), da 2 a 18 (55°)
Passi Metrici: 3,5 mm, 7 mm (Diritto e 55°)
Passi in Pollici: 3,81 mm, 7,62 mm (Diritto)



The MTB terminal block Series for printed circuit boards satisfies the user's mounting needs with the following possibilities:

- using individual single mold terminal blocks from 2 to 25 poles;
- combining or placing on the PCB side stackable single mold terminal blocks from 2 to 25 poles to obtain any number of poles;
- minimizing the stock by storing only some base terminal blocks (ex. 2 - 3... 25 poles) to enable combinations as described above;
- being included in a custom Kit package to simplify the product management (part-numbers reduction), to minimize the stock, to improve the assembly and to reduce production errors.

MTB with Pegs

The Straight 2 poles MTB is also available with clamping pegs molded in the plastic housing to secure it to the board.

This solution increases the connector tightening torque and allows it to pass the most restrictive guidelines set by the international standards.

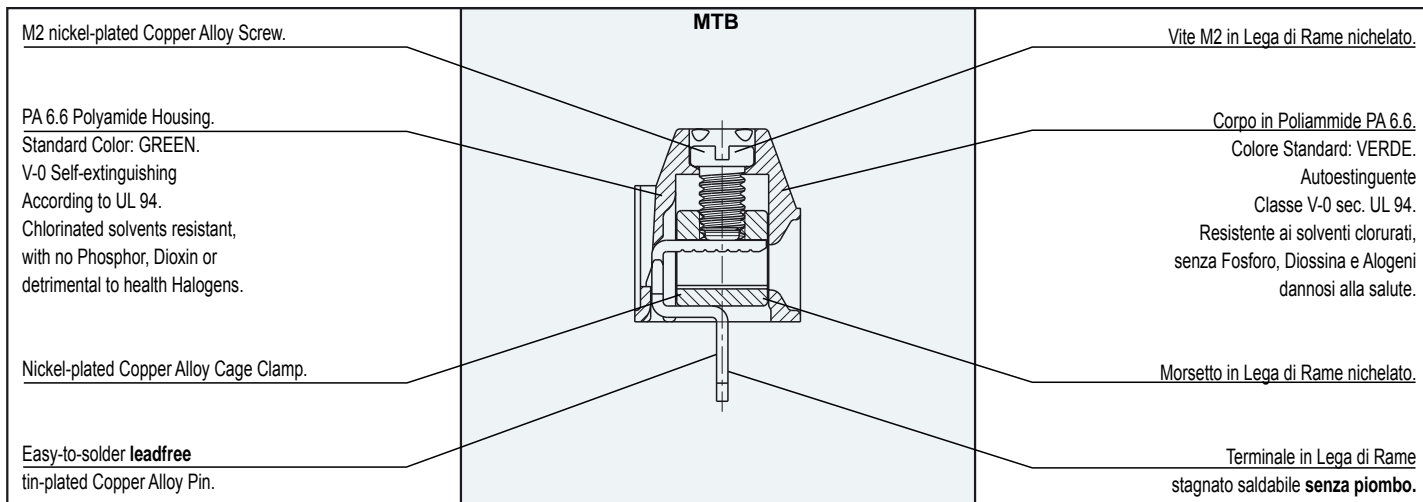
La morsettiera Serie MTB per circuiti stampati soddisfa le esigenze di montaggio dell'utilizzatore; infatti è possibile:

- utilizzare singolarmente le morsettiere base monolitiche da 2 a 25 vie;
- affiancare o comporre sul circuito stampato le morsettiere base monolitiche da 2 a 25 vie per ottenere qualsiasi numero di vie;
- gestire uno stoccaggio minimo di morsettiere base (es. 2 - 3... 25 vie) per ottenere quanto sopra;
- utilizzare le confezioni Kit che permettono una semplificazione della gestione del prodotto (riduzione dei part-number), del magazzino, dell'assemblaggio, nonché una riduzione dei rischi d'errore.

MTB con Piolini

La morsettiera MTB 2 vie Diritta è disponibile anche con piolini di ancoraggio a scheda, integrati nel corpo plastico.

Questa soluzione consente di scaricare la coppia di serraggio a scheda e di superare le prescrizioni più restrittive richieste da alcune normative internazionali.



Mechanical Characteristics

| | |
|--------------------------------|-------------------------------------|
| Recommended tightening torque: | 0.3 Nm (UL)* |
| PCB thickness: | max. .094 in (max. 2.4 mm) |
| PCB hole diameter: | min. .043 in (min. 1.1 mm) |
| Stripping length: | .197 in (5 mm) |
| Operating temperature range: | -40 °F ÷ +230 °F (-40 °C ÷ +110 °C) |
| Climatic category: | 40/110/21 According to IEC 68-1 |

Electrical Characteristics

| | |
|------------------------|--|
| Solid wire section: | 30÷16 AWG - 0.05 ÷ 1.5 mm ² (UL, CSA)* |
| Stranded wire section: | 30÷16 AWG - 0.05÷1 mm ² (UL, CSA)* |
| Rated voltage: | .138 in (3.5 mm) and .150 in (3.81 mm) pitch 300 V (UL, CSA)* .275 in (7 mm) and .300 in (7.62 mm) pitch 750 V (IMQ)* |
| Rated current: | 17.5 A (IMQ)* |
| Contact resistance: | <15 mΩ |
| Insulation resistance: | >10 ⁹ Ω (500V DC) |

*All the a.m. data refer to the highest values amongst the certificated ones (). **V** voltage, **I** current values and tightening torque are related to the norms to be applied to the product and to its use.

Caratteristiche Meccaniche

| | |
|----------------------------------|----------------------------|
| Coppia di serraggio consigliata: | 0,3 Nm (UL)* |
| Spessore circuito stampato: | max. 2,4 mm |
| Diametro fori circuito stampato: | min. 1,1 mm |
| Lunghezza di spellatura: | 5 mm |
| Temperature di funzionamento: | -40 °C ÷ +110 °C |
| Categoria climatica: | 40/110/21 Secondo IEC 68-1 |

Caratteristiche Elettriche

| | |
|-------------------------------------|--|
| Conduttore connettibile rigido: | 0,05÷1,5 mm ² - 30÷16 AWG (UL, CSA)* |
| Conduttore connettibile flessibile: | 0,05÷1 mm ² - 30÷16 AWG (UL, CSA)* |
| Tensione nominale: | passo 3,5 mm e 3,81 mm 300 V (UL, CSA)* passo 7 mm e 7,62 mm 750 V (IMQ)* |
| Corrente nominale: | 17,5 A (IMQ)* |
| Resistenza di contatto: | <15 mΩ |
| Resistenza di isolamento: | >10 ⁹ Ω (500V CC) |

*Per ogni caratteristica, i dati riportati si riferiscono ai massimi valori fra quelli certificati (). I valori di tensione **V** corrente **I** e, coppia di serraggio sono legati alle norme applicabili al prodotto ed al tipo di utilizzo.

Approvals

(see also "Certifications", page 22)

| | |
|-------------|---|
| VDE: | Pending |
| | 130 V - 12 A - T 110 - 1 mm ² for 3.5 mm and 3.81 mm pitch 450 V - 12 A - T 110 - 1 mm ² for 7 mm and 7.62 mm pitch Test torque 0.25 Nm |

| | |
|-------------|---|
| IMQ: | Certificate with Surveillance IMQ CSv CA02.0090 |
| ESS: | 130 V - T 110 - 17.5 A - 1.5 mm ² solid (12 A - 1 mm ² stranded) for 3.5 mm and 3.81 mm pitch 750 V - T 110 - 17.5 A - 1.5 mm ² solid (12 A - 1 mm ² stranded) for 7 mm and 7.62 mm pitch Test torque 0.25 Nm |

| | |
|-------------|--|
| CSA: | File LR 102896-1 |
| | 300 V - 12 A - 30÷16 AWG for 3.5 mm and 3.81 mm pitch 450 V - 12 A - 30÷16 AWG for 7 mm and 7.62 mm pitch |

| | |
|------------|---|
| UL: | File E 167473 |
| | 300 V - 12 A - 28÷16 AWG for 3.5 mm, 3.81 mm, 7 mm and 7.62 mm pitch Application values for end-use equipment have to be in accordance to UL norms and applicable to it. |



Certificazioni

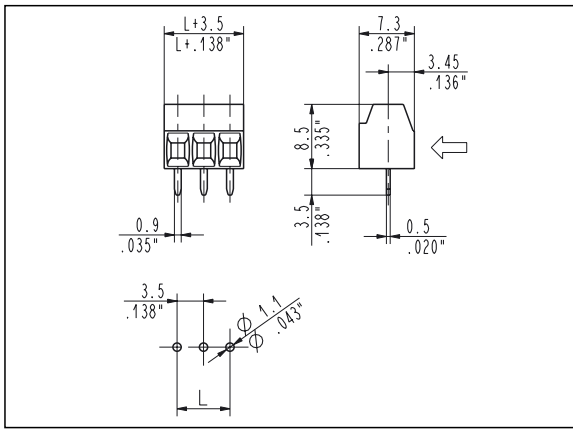
(vedi anche "Certificazioni", pag. 22)

| | |
|-------------|---|
| VDE: | Pending |
| | 130 V - 12 A - T 110 - 1 mm ² per passo 3,5 mm e 3,81 mm 450 V - 12 A - T 110 - 1 mm ² per passo 7 mm e 7,62 mm Coppia di prova 0,25 Nm |

| | |
|-------------|---|
| IMQ: | Certificato con Sorveglianza IMQ CSv CA02.0090 |
| ESS: | 130 V - T 110 - 17,5 A - 1,5 mm ² rigido (12 A - 1 mm ² flessibile) per passo 3,5 mm e 3,81 mm 750 V - T 110 - 17,5 A - 1,5 mm ² rigido (12 A - 1 mm ² flessibile) per passo 7 mm e 7,62 mm Coppia di prova 0,25 Nm |

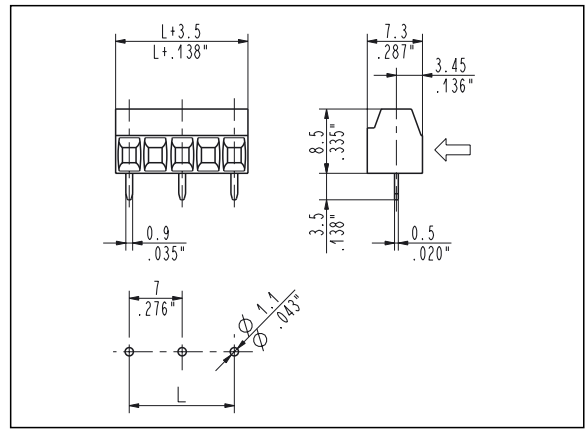
| | |
|-------------|--|
| CSA: | File LR 102896-1 |
| | 300 V - 12 A - 30÷16 AWG per passo 3,5 mm e 3,81 mm 450 V - 12 A - 30÷16 AWG per passo 7 mm e 7,62 mm |

| | |
|------------|---|
| UL: | File E 167473 |
| | 300 V - 12 A - 28÷16 AWG per passo 3,5 mm, 3,81 mm, 7 mm e 7,62 mm I valori di utilizzo per l'apparecchiatura finale devono essere conformi alle norme UL ad essa applicabili. |



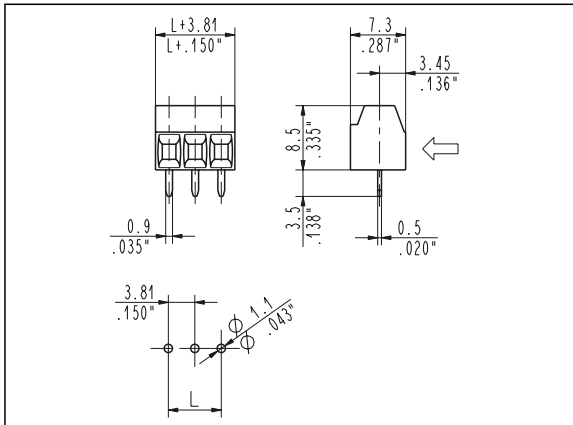
MTB_008 Straight, Side Entry
3.5 mm / .138" Pitch Weight per pole: 0.73 g

| Poles | STD Code | L [mm] | L [inch] | Pcs/pack. | W [kg] |
|-------|----------|--------|----------|-----------|--------|
| 02 | MTB02008 | 3.50 | 0.138 | 800 | 1.16 |
| 03 | MTB03008 | 7.00 | 0.276 | 500 | 1.09 |
| 04 | MTB04008 | 10.50 | 0.413 | 350 | 1.02 |
| 05 | MTB05008 | 14.00 | 0.551 | 275 | 1.00 |
| 06 | MTB06008 | 17.50 | 0.689 | 225 | 0.98 |
| 07 | MTB07008 | 21.00 | 0.827 | 175 | 0.89 |
| 08 | MTB08008 | 24.50 | 0.965 | 175 | 1.02 |
| 09 | MTB09008 | 28.00 | 1.102 | 150 | 0.98 |
| 10 | MTB10008 | 31.50 | 1.240 | 125 | 0.91 |
| 11 | MTB11008 | 35.00 | 1.378 | 125 | 1.00 |
| 12 | MTB12008 | 38.50 | 1.516 | 100 | 0.87 |
| 13 | MTB13008 | 42.00 | 1.654 | 100 | 0.95 |
| 14 | MTB14008 | 45.50 | 1.791 | 100 | 1.02 |
| 15 | MTB15008 | 49.00 | 1.929 | 100 | 1.09 |
| 16 | MTB16008 | 52.50 | 2.067 | 100 | 1.16 |
| 17 | MTB17008 | 56.00 | 2.205 | 75 | 0.93 |
| 18 | MTB18008 | 59.50 | 2.343 | 75 | 0.98 |
| 19 | MTB19008 | 63.00 | 2.480 | 75 | 1.04 |
| 20 | MTB20008 | 66.50 | 2.618 | 75 | 1.09 |
| 21 | MTB21008 | 70.00 | 2.756 | 75 | 1.15 |
| 22 | MTB22008 | 73.50 | 2.894 | 75 | 1.20 |
| 23 | MTB23008 | 77.00 | 3.031 | 75 | 1.26 |
| 24 | MTB24008 | 80.50 | 3.169 | 50 | 0.87 |
| 25 | MTB25008 | 84.00 | 3.307 | 50 | 0.91 |



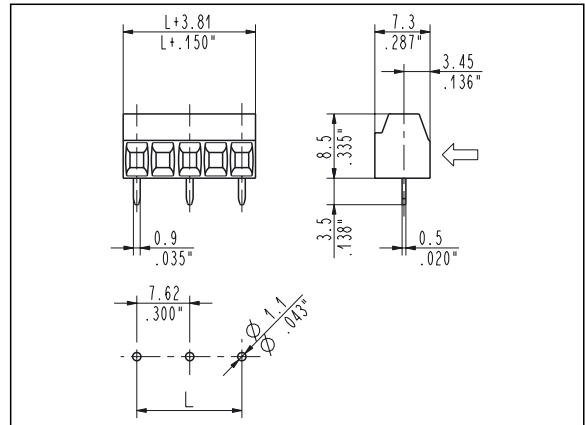
MTB_009 Straight, Side Entry
7 mm / .275" Pitch Weight per pole: 0.83 g

| Poles | STD Code | L [mm] | L [inch] | Pcs/pack. | W [kg] |
|-------|----------|--------|----------|-----------|--------|
| 02 | MTB02009 | 7.00 | 0.276 | 500 | 0.83 |
| 03 | MTB03009 | 14.00 | 0.551 | 275 | 0.69 |
| 04 | MTB04009 | 21.00 | 0.827 | 200 | 0.67 |
| 05 | MTB05009 | 28.00 | 1.102 | 150 | 0.62 |
| 06 | MTB06009 | 35.00 | 1.378 | 125 | 0.62 |
| 07 | MTB07009 | 42.00 | 1.654 | 100 | 0.58 |
| 08 | MTB08009 | 49.00 | 1.929 | 100 | 0.67 |
| 09 | MTB09009 | 56.00 | 2.205 | 75 | 0.56 |
| 10 | MTB10009 | 63.00 | 2.480 | 75 | 0.62 |
| 11 | MTB11009 | 70.00 | 2.756 | 75 | 0.69 |
| 12 | MTB12009 | 77.00 | 3.031 | 50 | 0.50 |
| 13 | MTB13009 | 84.00 | 3.307 | 50 | 0.54 |



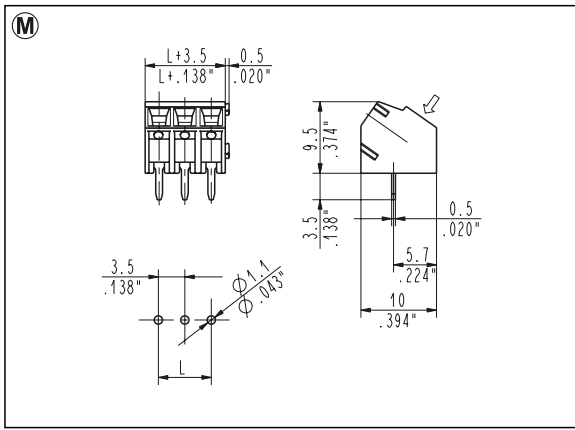
MTB_00T Straight, Side Entry
3.81 mm / .150" Pitch Weight per pole: 0.73 g

| Poles | STD Code | L [mm] | L [inch] | Pcs/pack. | W [kg] |
|-------|----------|--------|----------|-----------|--------|
| 02 | MTB0200T | 3.81 | 0.150 | 800 | 1.16 |
| 03 | MTB0300T | 7.62 | 0.300 | 500 | 1.09 |
| 04 | MTB0400T | 11.43 | 0.450 | 350 | 1.02 |
| 05 | MTB0500T | 15.24 | 0.600 | 275 | 1.00 |
| 06 | MTB0600T | 19.05 | 0.750 | 225 | 0.98 |
| 07 | MTB0700T | 22.86 | 0.900 | 175 | 0.89 |
| 08 | MTB0800T | 26.67 | 1.050 | 175 | 1.02 |
| 09 | MTB0900T | 30.48 | 1.200 | 150 | 0.98 |
| 10 | MTB1000T | 34.29 | 1.350 | 125 | 0.91 |
| 11 | MTB1100T | 38.10 | 1.500 | 125 | 1.00 |
| 12 | MTB1200T | 41.91 | 1.650 | 100 | 0.87 |
| 13 | MTB1300T | 45.72 | 1.800 | 100 | 0.95 |
| 14 | MTB1400T | 49.53 | 1.950 | 100 | 1.02 |
| 15 | MTB1500T | 53.34 | 2.100 | 100 | 1.09 |
| 16 | MTB1600T | 57.15 | 2.250 | 100 | 1.16 |
| 17 | MTB1700T | 60.96 | 2.400 | 75 | 0.93 |
| 18 | MTB1800T | 64.77 | 2.550 | 75 | 0.98 |
| 19 | MTB1900T | 68.58 | 2.700 | 75 | 1.04 |
| 20 | MTB2000T | 72.39 | 2.850 | 75 | 1.09 |
| 21 | MTB2100T | 76.20 | 3.000 | 75 | 1.15 |
| 22 | MTB2200T | 80.01 | 3.150 | 75 | 1.20 |
| 23 | MTB2300T | 83.82 | 3.300 | 75 | 1.26 |
| 24 | MTB2400T | 87.63 | 3.450 | 50 | 0.87 |
| 25 | MTB2500T | 91.44 | 3.600 | 50 | 0.91 |



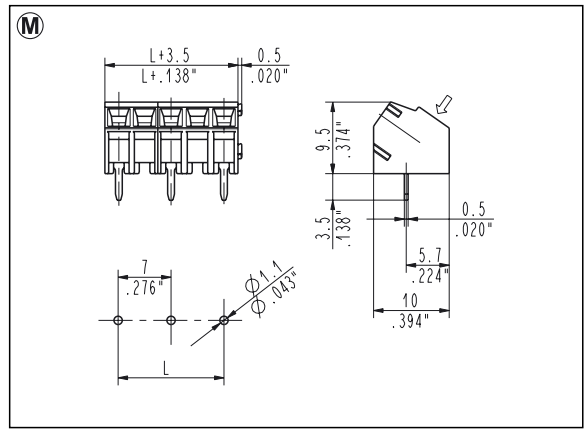
MTB_007 Straight, Side Entry
7.62 mm / .300" Pitch Weight per pole: 0.83 g

| Poles | STD Code | L [mm] | L [inch] | Pcs/pack. | W [kg] |
|-------|----------|--------|----------|-----------|--------|
| 02 | MTB02007 | 7.62 | 0.300 | 500 | 0.83 |
| 03 | MTB03007 | 15.24 | 0.600 | 275 | 0.69 |
| 04 | MTB04007 | 22.86 | 0.900 | 200 | 0.67 |
| 05 | MTB05007 | 30.48 | 1.200 | 150 | 0.62 |
| 06 | MTB06007 | 38.10 | 1.500 | 125 | 0.62 |
| 07 | MTB07007 | 45.72 | 1.800 | 100 | 0.58 |
| 08 | MTB08007 | 53.34 | 2.100 | 100 | 0.67 |
| 09 | MTB09007 | 60.96 | 2.400 | 75 | 0.56 |
| 10 | MTB10007 | 68.58 | 2.700 | 75 | 0.62 |
| 11 | MTB11007 | 76.20 | 3.000 | 75 | 0.69 |
| 12 | MTB12007 | 83.82 | 3.300 | 50 | 0.50 |
| 13 | MTB13007 | 91.44 | 3.600 | 50 | 0.54 |



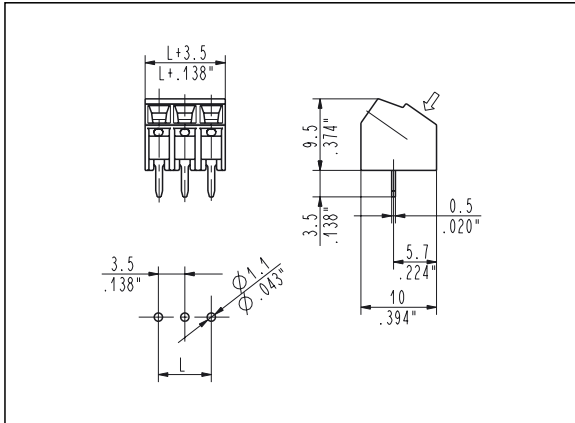
MTB_048 55° Modular, Angled Entry
3.5 mm / .138" Pitch Weight per pole: 0.94 g

| Poles | STD Code | L [mm] | L [inch] | Pcs/pack. | W [kg] |
|-------|----------|--------|----------|-----------|--------|
| 02 | MTB02048 | 3.50 | 0.138 | 800 | 1.50 |
| 03 | MTB03048 | 7.00 | 0.276 | 500 | 1.40 |
| 04 | MTB04048 | 10.50 | 0.413 | 350 | 1.31 |
| 05 | MTB05048 | 14.00 | 0.551 | 275 | 1.29 |
| 06 | MTB06048 | 17.50 | 0.689 | 225 | 1.26 |
| 07 | MTB07048 | 21.00 | 0.827 | 175 | 1.15 |
| 08 | MTB08048 | 24.50 | 0.965 | 175 | 1.31 |
| 09 | MTB09048 | 28.00 | 1.102 | 150 | 1.26 |
| 10 | MTB10048 | 31.50 | 1.240 | 125 | 1.17 |
| 11 | MTB11048 | 35.00 | 1.378 | 125 | 1.29 |
| 12 | MTB12048 | 38.50 | 1.516 | 100 | 1.12 |
| 13 | MTB13048 | 42.00 | 1.654 | 100 | 1.22 |
| 14 | MTB14048 | 45.50 | 1.791 | 100 | 1.31 |
| 15 | MTB15048 | 49.00 | 1.929 | 100 | 1.40 |
| 16 | MTB16048 | 52.50 | 2.067 | 100 | 1.50 |
| 17 | MTB17048 | 56.00 | 2.205 | 75 | 1.19 |
| 18 | MTB18048 | 59.50 | 2.343 | 75 | 1.26 |



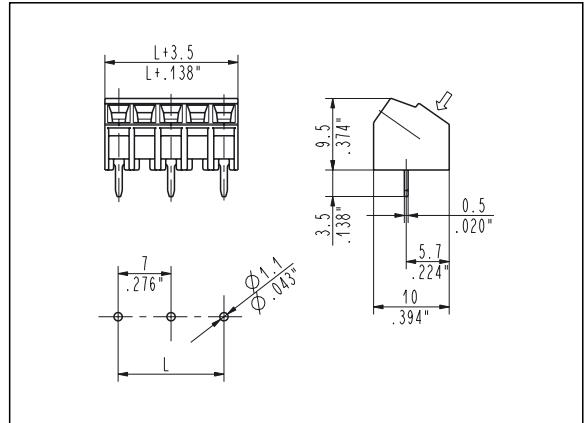
MTB_049 55° Modular, Angled Entry
7 mm / .275" Pitch Weight per pole: 1.04 g

| Poles | STD Code | L [mm] | L [inch] | Pcs/pack. | W [kg] |
|-------|----------|--------|----------|-----------|--------|
| 02 | MTB02049 | 7.00 | 0.276 | 500 | 1.04 |
| 03 | MTB03049 | 14.00 | 0.551 | 275 | 0.86 |
| 04 | MTB04049 | 21.00 | 0.827 | 200 | 0.83 |
| 05 | MTB05049 | 28.00 | 1.102 | 150 | 0.78 |
| 06 | MTB06049 | 35.00 | 1.378 | 125 | 0.78 |
| 07 | MTB07049 | 42.00 | 1.654 | 100 | 0.73 |
| 08 | MTB08049 | 49.00 | 1.929 | 100 | 0.83 |
| 09 | MTB09049 | 56.00 | 2.205 | 75 | 0.70 |



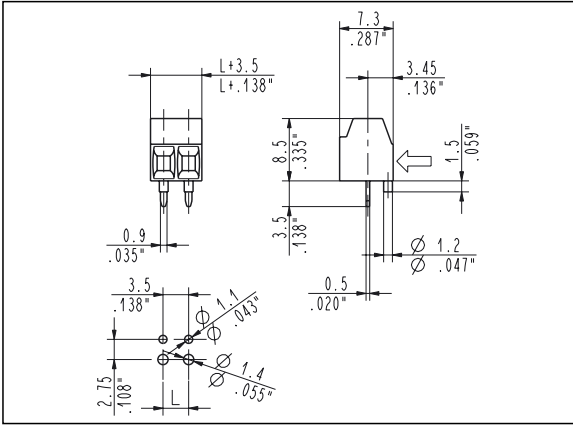
MTB_068 55°, Angled Entry
3.5 mm / .138" Pitch Weight per pole: 0.94 g

| Poles | STD Code | L [mm] | L [inch] | Pcs/pack. | W [kg] |
|-------|----------|--------|----------|-----------|--------|
| 02 | MTB02068 | 3.50 | 0.138 | 800 | 1.50 |
| 03 | MTB03068 | 7.00 | 0.276 | 500 | 1.40 |
| 04 | MTB04068 | 10.50 | 0.413 | 350 | 1.31 |
| 05 | MTB05068 | 14.00 | 0.551 | 275 | 1.29 |
| 06 | MTB06068 | 17.50 | 0.689 | 225 | 1.26 |
| 07 | MTB07068 | 21.00 | 0.827 | 175 | 1.15 |
| 08 | MTB08068 | 24.50 | 0.965 | 175 | 1.31 |
| 09 | MTB09068 | 28.00 | 1.102 | 150 | 1.26 |
| 10 | MTB10068 | 31.50 | 1.240 | 125 | 1.17 |
| 11 | MTB11068 | 35.00 | 1.378 | 125 | 1.29 |
| 12 | MTB12068 | 38.50 | 1.516 | 100 | 1.12 |
| 13 | MTB13068 | 42.00 | 1.654 | 100 | 1.22 |
| 14 | MTB14068 | 45.50 | .791 | 100 | 1.31 |
| 15 | MTB15068 | 49.00 | 1.929 | 100 | 1.40 |
| 16 | MTB16068 | 52.50 | 2.067 | 100 | 1.50 |
| 17 | MTB17068 | 56.00 | .205 | 75 | 1.19 |
| 18 | MTB18068 | 59.50 | .343 | 75 | 1.26 |



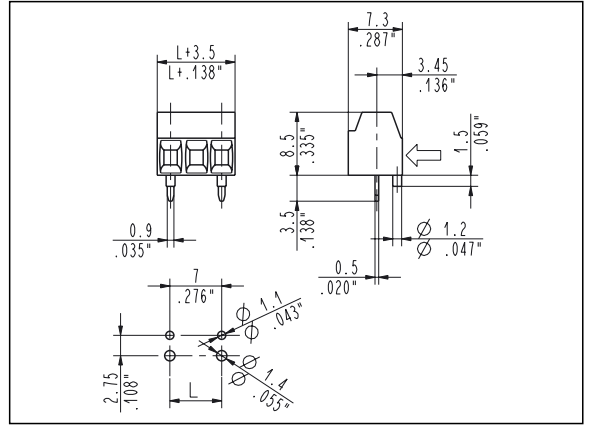
MTB_069 55°, Angled Entry
7 mm / .275" Pitch Weight per pole: 1.04 g

| Poles | STD Code | L [mm] | L [inch] | Pcs/pack. | W [kg] |
|-------|----------|--------|----------|-----------|--------|
| 02 | MTB02069 | 7.00 | 0.276 | 500 | 1.04 |
| 03 | MTB03069 | 14.00 | 0.551 | 275 | 0.86 |
| 04 | MTB04069 | 21.00 | 0.827 | 200 | 0.83 |
| 05 | MTB05069 | 28.00 | 1.102 | 150 | 0.78 |
| 06 | MTB06069 | 35.00 | 1.378 | 125 | 0.78 |
| 07 | MTB07069 | 42.00 | 1.654 | 100 | 0.73 |
| 08 | MTB08069 | 49.00 | 1.929 | 100 | 0.83 |
| 09 | MTB09069 | 56.00 | 2.205 | 75 | 0.70 |



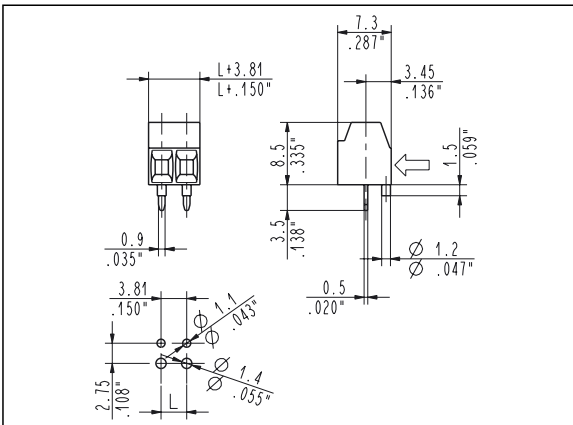
MTB02008 - 0000P Straight with Vde Pegs, Side Entry
3.5 mm / .138" Pitch Weight per pole: 0.73 g

| Poles | STD Code | L [mm] | L [inch] | Pcs/pack. | W [kg] |
|-------|----------------|--------|----------|-----------|--------|
| 02 | MTB02008-0000P | 3.50 | 0.138 | 800 | 1.16 |



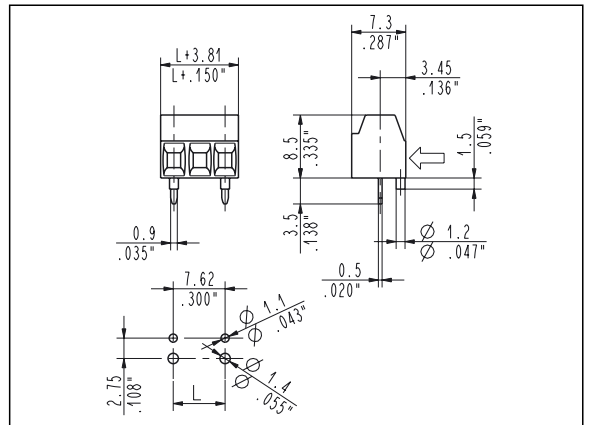
MTB02009 - 0000P Straight with Vde Pegs, Side Entry
7 mm / .275" Pitch Weight per pole: 0.83 g

| Poles | STD Code | L [mm] | L [inch] | Pcs/pack. | W [kg] |
|-------|----------------|--------|----------|-----------|--------|
| 02 | MTB02009-0000P | 7.00 | 0.276 | 500 | 0.83 |



MTB0200T - 0000P Straight with Vde Pegs, Side Entry
3.81 mm / .150" Pitch Weight per pole: 0.73 g

| Poles | STD Code | L [mm] | L [inch] | Pcs/pack. | W [kg] |
|-------|----------------|--------|----------|-----------|--------|
| 02 | MTB0200T-0000P | 3.81 | 0.150 | 800 | 1.16 |



MTB02007 - 0000P Straight with Vde Pegs, Side Entry
7.62 mm / .300" Pitch Weight per pole: 0.83 g

| Poles | STD Code | L [mm] | L [inch] | Pcs/pack. | W [kg] |
|-------|----------------|--------|----------|-----------|--------|
| 02 | MTB02007-0000P | 7.62 | 0.300 | 500 | 0.83 |