

# MC74AC11, MC74ACT11

## Triple 3-Input AND Gate

- Outputs Source/Sink 24 mA
- 'ACT11 Has TTL Compatible Inputs

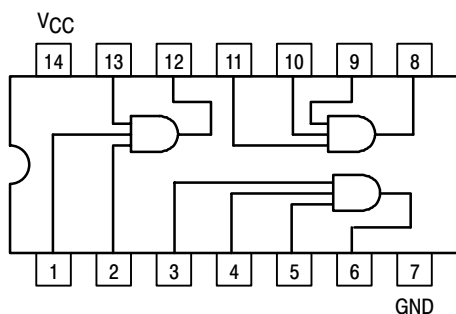


Figure 1. Pinout: 14-Lead Packages Conductors  
(Top View)

### MAXIMUM RATINGS\*

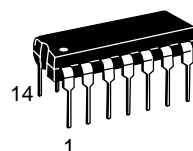
| Rating                                    | Symbol    | Value                  | Unit        |
|---|-----------|------------------------|-------------|
| DC Supply Voltage (Referenced to GND)     | $V_{CC}$  | -0.5 to +7.0           | V           |
| DC Input Voltage (Referenced to GND)      | $V_{in}$  | -0.5 to $V_{CC} + 0.5$ | V           |
| DC Output Voltage (Referenced to GND)     | $V_{out}$ | -0.5 to $V_{CC} + 0.5$ | V           |
| DC Input Current, per Pin                 | $I_{in}$  | $\pm 20$               | mA          |
| DC Output Sink/Source Current, per Pin    | $I_{out}$ | $\pm 50$               | mA          |
| DC $V_{CC}$ or GND Current per Output Pin | $I_{CC}$  | $\pm 50$               | mA          |
| Storage Temperature                       | $T_{stg}$ | -65 to +150            | $^{\circ}C$ |

\*Maximum Ratings are those values beyond which damage to the device may occur. Functional operation should be restricted to the Recommended Operating Conditions.

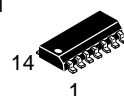


ON Semiconductor™

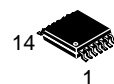
<http://onsemi.com>



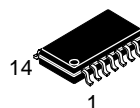
PDIP-14  
N SUFFIX  
CASE 646



SO-14  
D SUFFIX  
CASE 751A



TSSOP-14  
DT SUFFIX  
CASE 948G



EIAJ-14  
M SUFFIX  
CASE 965

### ORDERING INFORMATION

| Device        | Package  | Shipping         |
|---------------|----------|------------------|
| MC74AC11N     | PDIP-14  | 25 Units/Rail    |
| MC74ACT11N    | PDIP-14  | 25 Units/Rail    |
| MC74AC11D     | SOIC-14  | 55 Units/Rail    |
| MC74AC11DR2   | SOIC-14  | 2500 Tape & Reel |
| MC74ACT11D    | SOIC-14  | 55 Units/Rail    |
| MC74ACT11DR2  | SOIC-14  | 2500 Tape & Reel |
| MC74AC11DT    | TSSOP-14 | 96 Units/Rail    |
| MC74AC11DTR2  | TSSOP-14 | 2500 Tape & Reel |
| MC74ACT11DT   | TSSOP-14 | 96 Units/Rail    |
| MC74ACT11DTR2 | TSSOP-14 | 2500 Tape & Reel |
| MC74AC11M     | EIAJ-14  | 50 Units/Rail    |
| MC74AC11MEL   | EIAJ-14  | 2000 Tape & Reel |
| MC74ACT11M    | EIAJ-14  | 50 Units/Rail    |
| MC74ACT11MEL  | EIAJ-14  | 2000 Tape & Reel |

### DEVICE MARKING INFORMATION

See general marking information in the device marking section on page 5 of this data sheet.

# MC74AC11, MC74ACT11

## RECOMMENDED OPERATING CONDITIONS

| Symbol                             | Parameter   | Min                     | Typ | Max             | Unit |      |
|------------------------------------|---|-------------------------|-----|-----------------|------|------|
| V <sub>CC</sub>                    | Supply Voltage  | 'AC                     | 2.0 | 5.0             | 6.0  | V    |
|                                    |   | 'ACT                    | 4.5 | 5.0             | 5.5  |      |
| V <sub>in</sub> , V <sub>out</sub> | DC Input Voltage, Output Voltage (Ref. to GND)                          | 0                       | –   | V <sub>CC</sub> | V    |      |
| t <sub>r</sub> , t <sub>f</sub>    | Input Rise and Fall Time (Note 1)<br>'AC Devices except Schmitt Inputs  | V <sub>CC</sub> @ 3.0 V | –   | 150             | –    | ns/V |
|                                    |   | V <sub>CC</sub> @ 4.5 V | –   | 40              | –    |      |
|                                    |   | V <sub>CC</sub> @ 5.5 V | –   | 25              | –    |      |
| t <sub>r</sub> , t <sub>f</sub>    | Input Rise and Fall Time (Note 2)<br>'ACT Devices except Schmitt Inputs | V <sub>CC</sub> @ 4.5 V | –   | 10              | –    | ns/V |
|                                    |   | V <sub>CC</sub> @ 5.5 V | –   | 8.0             | –    |      |
| T <sub>J</sub>                     | Junction Temperature (PDIP)   | –                       | –   | 140             | °C   |      |
| T <sub>A</sub>                     | Operating Ambient Temperature Range                                     | –40                     | 25  | 85              | °C   |      |
| I <sub>OH</sub>                    | Output Current – High   | –                       | –   | –24             | mA   |      |
| I <sub>OL</sub>                    | Output Current – Low  | –                       | –   | 24              | mA   |      |

1. V<sub>in</sub> from 30% to 70% V<sub>CC</sub>; see individual Data Sheets for devices that differ from the typical input rise and fall times.
2. V<sub>in</sub> from 0.8 V to 2.0 V; see individual Data Sheets for devices that differ from the typical input rise and fall times.

## DC CHARACTERISTICS

| Symbol           | Parameter                            | V <sub>CC</sub><br>(V) | 74AC                   |                   | 74AC                                  | Unit | Conditions  |
|------------------|--------------------------------------|------------------------|------------------------|-------------------|---------------------------------------|------|---|
|                  |                                      |                        | T <sub>A</sub> = +25°C |                   | T <sub>A</sub> =<br>–40°C to<br>+85°C |      |   |
|                  |                                      |                        | Typ                    | Guaranteed Limits |                                       |      |   |
| V <sub>IH</sub>  | Minimum High Level<br>Input Voltage  | 3.0                    | 1.5                    | 2.1               | 2.1                                   | V    | V <sub>OUT</sub> = 0.1 V<br>or V <sub>CC</sub> – 0.1 V  |
|                  |                                      | 4.5                    | 2.25                   | 3.15              | 3.15                                  |      |   |
|                  |                                      | 5.5                    | 2.75                   | 3.85              | 3.85                                  |      |   |
| V <sub>IL</sub>  | Maximum Low Level<br>Input Voltage   | 3.0                    | 1.5                    | 0.9               | 0.9                                   | V    | V <sub>OUT</sub> = 0.1 V<br>or V <sub>CC</sub> – 0.1 V  |
|                  |                                      | 4.5                    | 2.25                   | 1.35              | 1.35                                  |      |   |
|                  |                                      | 5.5                    | 2.75                   | 1.65              | 1.65                                  |      |   |
| V <sub>OH</sub>  | Minimum High Level<br>Output Voltage | 3.0                    | 2.99                   | 2.9               | 2.9                                   | V    | I <sub>OUT</sub> = –50 μA   |
|                  |                                      | 4.5                    | 4.49                   | 4.4               | 4.4                                   |      |   |
|                  |                                      | 5.5                    | 5.49                   | 5.4               | 5.4                                   |      |   |
|                  |                                      | 3.0                    | –                      | 2.56              | 2.46                                  | V    | *V <sub>IN</sub> = V <sub>IL</sub> or V <sub>IH</sub><br>–12 mA<br>I <sub>OH</sub> –24 mA<br>–24 mA |
|                  |                                      | 4.5                    | –                      | 3.86              | 3.76                                  |      |   |
| 5.5              | –                                    | 4.86                   | 4.76                   |                   |                                       |      |   |
| V <sub>OL</sub>  | Maximum Low Level<br>Output Voltage  | 3.0                    | 0.002                  | 0.1               | 0.1                                   | V    | I <sub>OUT</sub> = 50 μA  |
|                  |                                      | 4.5                    | 0.001                  | 0.1               | 0.1                                   |      |   |
|                  |                                      | 5.5                    | 0.001                  | 0.1               | 0.1                                   |      |   |
|                  |                                      | 3.0                    | –                      | 0.36              | 0.44                                  | V    | *V <sub>IN</sub> = V <sub>IL</sub> or V <sub>IH</sub><br>12 mA<br>I <sub>OL</sub> 24 mA<br>24 mA    |
|                  |                                      | 4.5                    | –                      | 0.36              | 0.44                                  |      |   |
| 5.5              | –                                    | 0.36                   | 0.44                   |                   |                                       |      |   |
| I <sub>IN</sub>  | Maximum Input<br>Leakage Current     | 5.5                    | –                      | ±0.1              | ±1.0                                  | μA   | V <sub>I</sub> = V <sub>CC</sub> , GND  |
| I <sub>OLD</sub> | †Minimum Dynamic<br>Output Current   | 5.5                    | –                      | –                 | 75                                    | mA   | V <sub>OLD</sub> = 1.65 V Max   |
| I <sub>OHD</sub> |                                      | 5.5                    | –                      | –                 | –75                                   | mA   | V <sub>OHD</sub> = 3.85 V Min   |
| I <sub>CC</sub>  | Maximum Quiescent<br>Supply Current  | 5.5                    | –                      | 4.0               | 40                                    | μA   | V <sub>IN</sub> = V <sub>CC</sub> or GND  |

\*All outputs loaded; thresholds on input associated with output under test.

†Maximum test duration 2.0 ms, one output loaded at a time.

NOTE: I<sub>IN</sub> and I<sub>CC</sub> @ 3.0 V are guaranteed to be less than or equal to the respective limit @ 5.5 V V<sub>CC</sub>.

# MC74AC11, MC74ACT11

**AC CHARACTERISTICS** (For Figures and Waveforms – See Section 3 of the ON Semiconductor FACT Data Book, DL138/D)

| Symbol           | Parameter         | V <sub>CC</sub> *<br>(V) | 74AC   |            |            | 74AC   |             | Unit | Fig. No. |
|------------------|-------------------|--------------------------|--|------------|------------|--|-------------|------|----------|
|                  |                   |                          | T <sub>A</sub> = +25°C<br>C <sub>L</sub> = 50 pF |            |            | T <sub>A</sub> = -40°C<br>to +85°C<br>C <sub>L</sub> = 50 pF |             |      |          |
|                  |                   |                          | Min  | Typ        | Max        | Min  | Max         |      |          |
| t <sub>PLH</sub> | Propagation Delay | 3.3<br>5.0               | 1.5<br>1.5                                       | 5.5<br>4.0 | 9.5<br>8.0 | 1.0<br>1.0   | 10.0<br>8.5 | ns   | 3–5      |
| t <sub>PHL</sub> | Propagation Delay | 3.3<br>5.0               | 1.5<br>1.5                                       | 5.5<br>4.0 | 8.5<br>7.0 | 1.0<br>1.0   | 9.5<br>7.5  | ns   | 3–5      |

\*Voltage Range 3.3 V is 3.3 V ±0.3 V.  
Voltage Range 5.0 V is 5.0 V ±0.5 V.

## DC CHARACTERISTICS

| Symbol             | Parameter                              | V <sub>CC</sub><br>(V) | 74ACT                  |                   | 74ACT                                 |    | Unit  | Conditions |
|--------------------|--|------------------------|------------------------|-------------------|---------------------------------------|----|---|------------|
|                    |  |                        | T <sub>A</sub> = +25°C |                   | T <sub>A</sub> =<br>-40°C to<br>+85°C |    |   |            |
|                    |  |                        | Typ                    | Guaranteed Limits |                                       |    |   |            |
| V <sub>IH</sub>    | Minimum High Level<br>Input Voltage    | 4.5                    | 1.5                    | 2.0               | 2.0                                   | V  | V <sub>OUT</sub> = 0.1 V<br>or V <sub>CC</sub> - 0.1 V                                    |            |
|                    |  | 5.5                    | 1.5                    | 2.0               | 2.0                                   |    |   |            |
| V <sub>IL</sub>    | Maximum Low Level<br>Input Voltage     | 4.5                    | 1.5                    | 0.8               | 0.8                                   | V  | V <sub>OUT</sub> = 0.1 V<br>or V <sub>CC</sub> - 0.1 V                                    |            |
|                    |  | 5.5                    | 1.5                    | 0.8               | 0.8                                   |    |   |            |
| V <sub>OH</sub>    | Minimum High Level<br>Output Voltage   | 4.5                    | 4.49                   | 4.4               | 4.4                                   | V  | I <sub>OUT</sub> = -50 μA   |            |
|                    |  | 5.5                    | 5.49                   | 5.4               | 5.4                                   |    |   |            |
|                    |  | 4.5                    | –                      | 3.86              | 3.76                                  | V  | *V <sub>IN</sub> = V <sub>IL</sub> or V <sub>IH</sub><br>-24 mA<br>I <sub>OH</sub> -24 mA |            |
|                    |  | 5.5                    | –                      | 4.86              | 4.76                                  |    |   |            |
| V <sub>OL</sub>    | Maximum Low Level<br>Output Voltage    | 4.5                    | 0.001                  | 0.1               | 0.1                                   | V  | I <sub>OUT</sub> = 50 μA  |            |
|                    |  | 5.5                    | 0.001                  | 0.1               | 0.1                                   |    |   |            |
|                    |  | 4.5                    | –                      | 0.36              | 0.44                                  | V  | *V <sub>IN</sub> = V <sub>IL</sub> or V <sub>IH</sub><br>24 mA<br>I <sub>OL</sub> 24 mA   |            |
|                    |  | 5.5                    | –                      | 0.36              | 0.44                                  |    |   |            |
| I <sub>IN</sub>    | Maximum Input<br>Leakage Current       | 5.5                    | –                      | ±0.1              | ±1.0                                  | μA | V <sub>I</sub> = V <sub>CC</sub> , GND  |            |
| ΔI <sub>CC</sub> T | Additional Max. I <sub>CC</sub> /Input | 5.5                    | 0.6                    | –                 | 1.5                                   | mA | V <sub>I</sub> = V <sub>CC</sub> - 2.1 V  |            |
| I <sub>OLD</sub>   | †Minimum Dynamic<br>Output Current     | 5.5                    | –                      | –                 | 75                                    | mA | V <sub>OLD</sub> = 1.65 V Max   |            |
| I <sub>OHD</sub>   |  | 5.5                    | –                      | –                 | -75                                   | mA | V <sub>OHD</sub> = 3.85 V Min   |            |
| I <sub>CC</sub>    | Maximum Quiescent<br>Supply Current    | 5.5                    | –                      | 4.0               | 40                                    | μA | V <sub>IN</sub> = V <sub>CC</sub> or GND  |            |

\*All outputs loaded; thresholds on input associated with output under test.

†Maximum test duration 2.0 ms, one output loaded at a time.

# MC74AC11, MC74ACT11

**AC CHARACTERISTICS** (For Figures and Waveforms – See Section 3 of the ON Semiconductor FACT Data Book, DL138/D)

| Symbol           | Parameter         | V <sub>CC</sub> *<br>(V) | 74ACT  |     |     | 74ACT  |      | Unit | Fig. No. |
|------------------|-------------------|--------------------------|--|-----|-----|--|------|------|----------|
|                  |                   |                          | T <sub>A</sub> = +25°C<br>C <sub>L</sub> = 50 pF |     |     | T <sub>A</sub> = -40°C<br>to +85°C<br>C <sub>L</sub> = 50 pF |      |      |          |
|                  |                   |                          | Min  | Typ | Max | Min  | Max  |      |          |
| t <sub>PLH</sub> | Propagation Delay | 5.0                      | 1.5  | –   | 9.5 | 1.0  | 10.5 | ns   | 3–5      |
| t <sub>PHL</sub> | Propagation Delay | 5.0                      | 1.5  | –   | 9.5 | 1.0  | 10.5 | ns   | 3–5      |

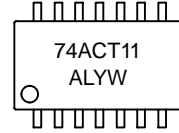
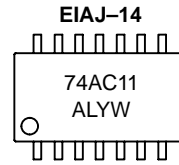
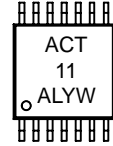
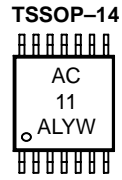
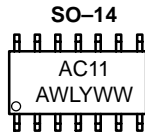
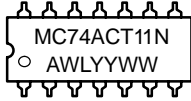
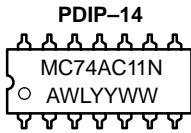
\*Voltage Range 5.0 V is 5.0 V ±0.5 V.

## CAPACITANCE

| Symbol          | Parameter                     | Value<br>Typ | Unit | Test Conditions         |
|-----------------|-------------------------------|--------------|------|-------------------------|
| C <sub>IN</sub> | Input Capacitance             | 4.5          | pF   | V <sub>CC</sub> = 5.0 V |
| C <sub>PD</sub> | Power Dissipation Capacitance | 20           | pF   | V <sub>CC</sub> = 5.0 V |

# MC74AC11, MC74ACT11

## MARKING DIAGRAMS

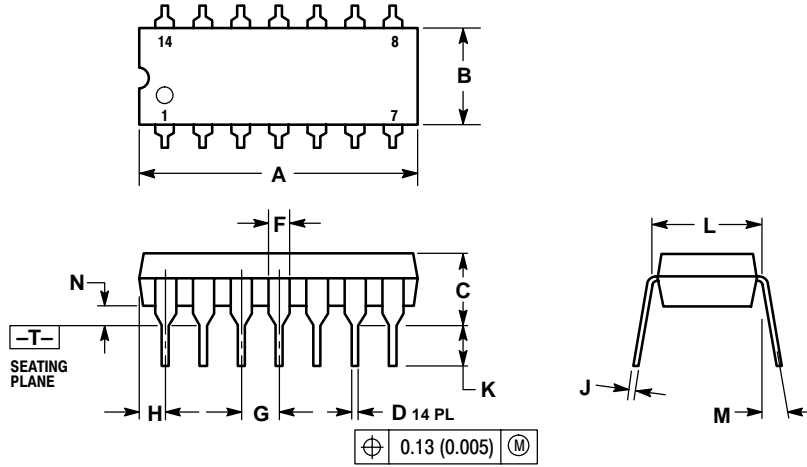


A = Assembly Location  
WL, L = Wafer Lot  
YY, Y = Year  
WW, W = Work Week

# MC74AC11, MC74ACT11

## PACKAGE DIMENSIONS

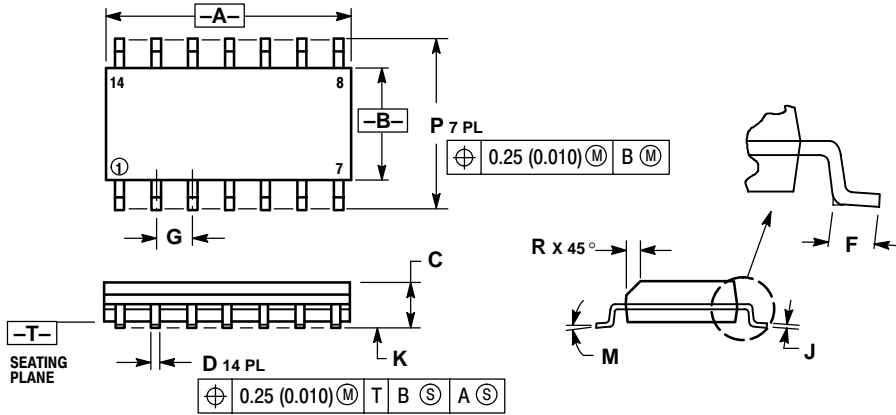
**PDIP-14**  
**N SUFFIX**  
 14 PIN PLASTIC DIP PACKAGE  
 CASE 646-06  
 ISSUE M



- NOTES:
1. DIMENSIONING AND TOLERANCING PER ANSI Y14.5M, 1982.
  2. CONTROLLING DIMENSION: INCH.
  3. DIMENSION L TO CENTER OF LEADS WHEN FORMED PARALLEL.
  4. DIMENSION B DOES NOT INCLUDE MOLD FLASH.
  5. ROUNDED CORNERS OPTIONAL.

| DIM | INCHES    |       | MILLIMETERS |       |
|-----|-----------|-------|-------------|-------|
|     | MIN       | MAX   | MIN         | MAX   |
| A   | 0.715     | 0.770 | 18.16       | 18.80 |
| B   | 0.240     | 0.260 | 6.10        | 6.60  |
| C   | 0.145     | 0.185 | 3.69        | 4.69  |
| D   | 0.015     | 0.021 | 0.38        | 0.53  |
| F   | 0.040     | 0.070 | 1.02        | 1.78  |
| G   | 0.100 BSC |       | 2.54 BSC    |       |
| H   | 0.052     | 0.095 | 1.32        | 2.41  |
| J   | 0.008     | 0.015 | 0.20        | 0.38  |
| K   | 0.115     | 0.135 | 2.92        | 3.43  |
| L   | 0.290     | 0.310 | 7.37        | 7.87  |
| M   | ---       | 10°   | ---         | 10°   |
| N   | 0.015     | 0.039 | 0.38        | 1.01  |

**SO-14**  
**D SUFFIX**  
 14 PIN PLASTIC SOIC PACKAGE  
 CASE 751A-03  
 ISSUE F



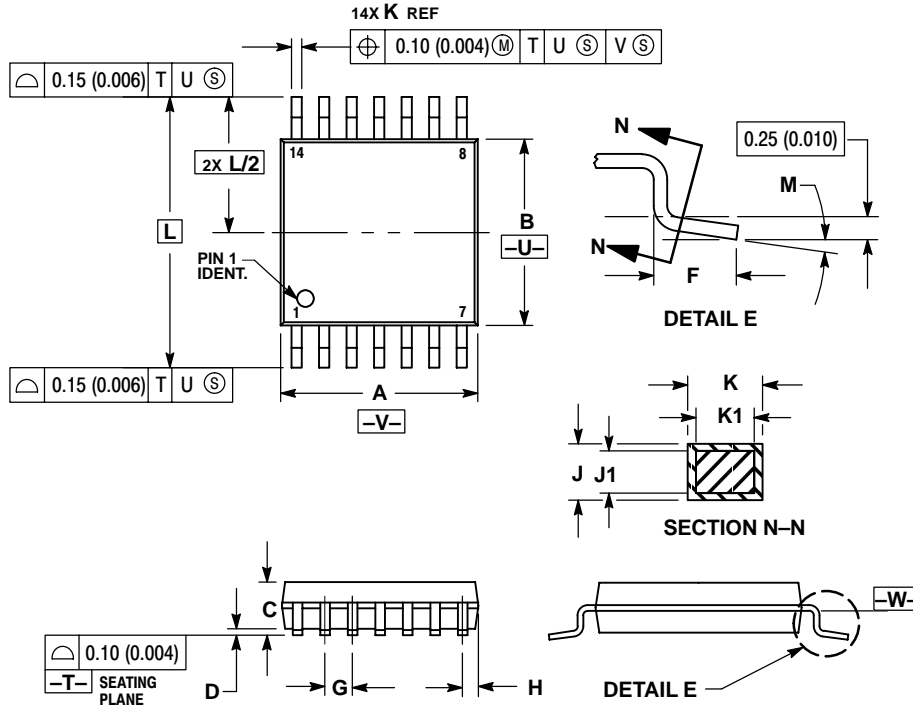
- NOTES:
1. DIMENSIONING AND TOLERANCING PER ANSI Y14.5M, 1982.
  2. CONTROLLING DIMENSION: MILLIMETER.
  3. DIMENSIONS A AND B DO NOT INCLUDE MOLD PROTRUSION.
  4. MAXIMUM MOLD PROTRUSION 0.15 (0.006) PER SIDE.
  5. DIMENSION D DOES NOT INCLUDE DAMBAR PROTRUSION. ALLOWABLE DAMBAR PROTRUSION SHALL BE 0.127 (0.005) TOTAL IN EXCESS OF THE D DIMENSION AT MAXIMUM MATERIAL CONDITION.

| DIM | MILLIMETERS |      | INCHES    |       |
|-----|-------------|------|-----------|-------|
|     | MIN         | MAX  | MIN       | MAX   |
| A   | 8.55        | 8.75 | 0.337     | 0.344 |
| B   | 3.80        | 4.00 | 0.150     | 0.157 |
| C   | 1.35        | 1.75 | 0.054     | 0.068 |
| D   | 0.35        | 0.49 | 0.014     | 0.019 |
| F   | 0.40        | 1.25 | 0.016     | 0.049 |
| G   | 1.27 BSC    |      | 0.050 BSC |       |
| J   | 0.19        | 0.25 | 0.008     | 0.009 |
| K   | 0.10        | 0.25 | 0.004     | 0.009 |
| M   | 0°          | 7°   | 0°        | 7°    |
| P   | 5.80        | 6.20 | 0.228     | 0.244 |
| R   | 0.25        | 0.50 | 0.010     | 0.019 |

# MC74AC11, MC74ACT11

## PACKAGE DIMENSIONS

**TSSOP-14**  
**DT SUFFIX**  
 14 PIN PLASTIC TSSOP PACKAGE  
 CASE 948G-01  
 ISSUE O

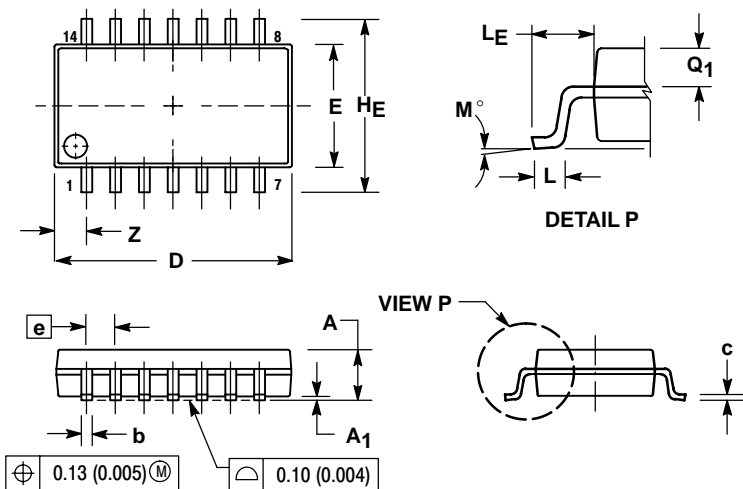


**NOTES:**

1. DIMENSIONING AND TOLERANCING PER ANSI Y14.5M, 1982.
2. CONTROLLING DIMENSION: MILLIMETER.
3. DIMENSION A DOES NOT INCLUDE MOLD FLASH, PROTRUSIONS OR GATE BURRS. MOLD FLASH OR GATE BURRS SHALL NOT EXCEED 0.15 (0.006) PER SIDE.
4. DIMENSION B DOES NOT INCLUDE INTERLEAD FLASH OR PROTRUSION. INTERLEAD FLASH OR PROTRUSION SHALL NOT EXCEED 0.25 (0.010) PER SIDE.
5. DIMENSION K DOES NOT INCLUDE DAMBAR PROTRUSION. ALLOWABLE DAMBAR PROTRUSION SHALL BE 0.08 (0.003) TOTAL IN EXCESS OF THE K DIMENSION AT MAXIMUM MATERIAL CONDITION.
6. TERMINAL NUMBERS ARE SHOWN FOR REFERENCE ONLY.
7. DIMENSION A AND B ARE TO BE DETERMINED AT DATUM PLANE -W-.

| DIM | MILLIMETERS |      | INCHES    |       |
|-----|-------------|------|-----------|-------|
|     | MIN         | MAX  | MIN       | MAX   |
| A   | 4.90        | 5.10 | 0.193     | 0.200 |
| B   | 4.30        | 4.50 | 0.169     | 0.177 |
| C   | ---         | 1.20 | ---       | 0.047 |
| D   | 0.05        | 0.15 | 0.002     | 0.006 |
| F   | 0.50        | 0.75 | 0.020     | 0.030 |
| G   | 0.65 BSC    |      | 0.026 BSC |       |
| H   | 0.50        | 0.60 | 0.020     | 0.024 |
| J   | 0.09        | 0.20 | 0.004     | 0.008 |
| J1  | 0.09        | 0.16 | 0.004     | 0.006 |
| K   | 0.19        | 0.30 | 0.007     | 0.012 |
| K1  | 0.19        | 0.25 | 0.007     | 0.010 |
| L   | 6.40 BSC    |      | 0.252 BSC |       |
| M   | 0°          | 8°   | 0°        | 8°    |

**EIAJ-14**  
**M SUFFIX**  
 14 PIN PLASTIC EIAJ PACKAGE  
 CASE 965-01  
 ISSUE O




**NOTES:**

1. DIMENSIONING AND TOLERANCING PER ANSI Y14.5M, 1982.
2. CONTROLLING DIMENSION: MILLIMETER.
3. DIMENSIONS D AND E DO NOT INCLUDE MOLD FLASH OR PROTRUSIONS AND ARE MEASURED AT THE PARTING LINE. MOLD FLASH OR PROTRUSIONS SHALL NOT EXCEED 0.15 (0.006) PER SIDE.
4. TERMINAL NUMBERS ARE SHOWN FOR REFERENCE ONLY.
5. THE LEAD WIDTH DIMENSION (b) DOES NOT INCLUDE DAMBAR PROTRUSION. ALLOWABLE DAMBAR PROTRUSION SHALL BE 0.08 (0.003) TOTAL IN EXCESS OF THE LEAD WIDTH DIMENSION AT MAXIMUM MATERIAL CONDITION. DAMBAR CANNOT BE LOCATED ON THE LOWER RADIUS OR THE FOOT. MINIMUM SPACE BETWEEN PROTRUSIONS AND ADJACENT LEAD TO BE 0.46 (0.018).

| DIM  | MILLIMETERS |       | INCHES    |       |
|------|-------------|-------|-----------|-------|
|      | MIN         | MAX   | MIN       | MAX   |
| A    | ---         | 2.05  | ---       | 0.081 |
| A1   | 0.05        | 0.20  | 0.002     | 0.008 |
| b    | 0.35        | 0.50  | 0.014     | 0.020 |
| c    | 0.18        | 0.27  | 0.007     | 0.011 |
| D    | 9.90        | 10.50 | 0.390     | 0.413 |
| E    | 5.10        | 5.45  | 0.201     | 0.215 |
| e    | 1.27 BSC    |       | 0.050 BSC |       |
| HE   | 7.40        | 8.20  | 0.291     | 0.323 |
| 0.50 | 0.50        | 0.85  | 0.020     | 0.033 |
| LE   | 1.10        | 1.50  | 0.043     | 0.059 |
| M    | 0°          | 10°   | 0°        | 10°   |
| Q1   | 0.70        | 0.90  | 0.028     | 0.035 |
| Z    | ---         | 1.42  | ---       | 0.056 |

# MC74AC11, MC74ACT11

**ON Semiconductor** and  are trademarks of Semiconductor Components Industries, LLC (SCILLC). SCILLC reserves the right to make changes without further notice to any products herein. SCILLC makes no warranty, representation or guarantee regarding the suitability of its products for any particular purpose, nor does SCILLC assume any liability arising out of the application or use of any product or circuit, and specifically disclaims any and all liability, including without limitation special, consequential or incidental damages. "Typical" parameters which may be provided in SCILLC data sheets and/or specifications can and do vary in different applications and actual performance may vary over time. All operating parameters, including "Typicals" must be validated for each customer application by customer's technical experts. SCILLC does not convey any license under its patent rights nor the rights of others. SCILLC products are not designed, intended, or authorized for use as components in systems intended for surgical implant into the body, or other applications intended to support or sustain life, or for any other application in which the failure of the SCILLC product could create a situation where personal injury or death may occur. Should Buyer purchase or use SCILLC products for any such unintended or unauthorized application, Buyer shall indemnify and hold SCILLC and its officers, employees, subsidiaries, affiliates, and distributors harmless against all claims, costs, damages, and expenses, and reasonable attorney fees arising out of, directly or indirectly, any claim of personal injury or death associated with such unintended or unauthorized use, even if such claim alleges that SCILLC was negligent regarding the design or manufacture of the part. SCILLC is an Equal Opportunity/Affirmative Action Employer.

## PUBLICATION ORDERING INFORMATION

### Literature Fulfillment:

Literature Distribution Center for ON Semiconductor  
P.O. Box 5163, Denver, Colorado 80217 USA  
**Phone:** 303-675-2175 or 800-344-3860 Toll Free USA/Canada  
**Fax:** 303-675-2176 or 800-344-3867 Toll Free USA/Canada  
**Email:** ONlit@hibbertco.com

**N. American Technical Support:** 800-282-9855 Toll Free USA/Canada

**JAPAN:** ON Semiconductor, Japan Customer Focus Center  
4-32-1 Nishi-Gotanda, Shinagawa-ku, Tokyo, Japan 141-0031  
**Phone:** 81-3-5740-2700  
**Email:** r14525@onsemi.com

**ON Semiconductor Website:** <http://onsemi.com>

For additional information, please contact your local Sales Representative.