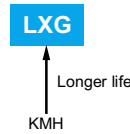


LXG Series

- Endurance with ripple current : 5,000 hours at 105°C
- Non solvent resistant type
- RoHS Compliant

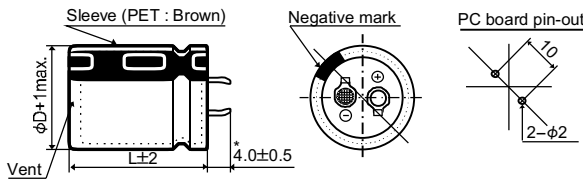


◆SPECIFICATIONS

| Items | Characteristics | | | | | | | | |
|--|---|--------------------------------------|------|------|------|------|------|-----------|------------------|
| Category | Temperature Range | | | | | | | | |
| Temperature Range | -40 to +105°C | | | | | | | | |
| Rated Voltage Range | 10 to 100V _{dc} (at 20°C, 120Hz) | | | | | | | | |
| Capacitance Tolerance | ±20% (M) | | | | | | | | |
| Leakage Current | I=0.02CV or 3mA, whichever is smaller. Where, I : Max. leakage current (µA), C : Nominal capacitance (µF), V : Rated voltage (V) (at 20°C after 5 minutes) | | | | | | | | |
| Dissipation Factor (tanδ) | Rated voltage (V _{dc}) | 10V | 16V | 25V | 35V | 50V | 63V | 80 & 100V | (at 20°C, 120Hz) |
| | tanδ (Max.) | 0.60 | 0.45 | 0.30 | 0.25 | 0.20 | 0.15 | 0.15 | |
| Low Temperature Characteristics (Max. Impedance Ratio) | Capacitance change : Capacitance at the lowest operating temperature shall not be less than 70% of the 20°C value. | | | | | | | | |
| | Rated voltage (V _{dc}) | 10V | 16V | 25V | 35V | 50V | 63V | 80 & 100V | (at 120Hz) |
| | Z(-25°C)/Z(+20°C) | 4 | 4 | 3 | 3 | 2 | 2 | 2 | |
| Z(-40°C)/Z(+20°C) | 15 | 15 | 10 | 8 | 6 | 6 | 5 | | |
| Endurance | The following specifications shall be satisfied when the capacitors are restored to 20°C after subjected to DC voltage with rated ripple current is applied for 5,000 hours at 105°C. | | | | | | | | |
| | Capacitance change | ≤±25% of the initial value | | | | | | | |
| | D.F. (tanδ) | ≤250% of the initial specified value | | | | | | | |
| | Leakage current | ≤The initial specified value | | | | | | | |
| Shelf Life | The following specifications shall be satisfied when the capacitors are restored to 20°C after exposing them for 500 hours at 105°C without voltage applied. Before the measurement, the capacitor shall be preconditioned by applying voltage according to Item 4.1 of JIS C 5101-4. | | | | | | | | |
| | Capacitance change | ≤±20% of the initial value | | | | | | | |
| | D.F. (tanδ) | ≤150% of the initial specified value | | | | | | | |
| | Leakage current | ≤The initial specified value | | | | | | | |

◆DIMENSIONS [mm]

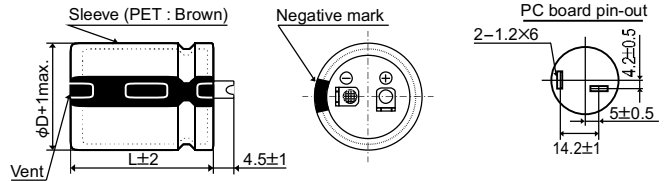
- Terminal Code : VS (φ22 to φ35) : Standard



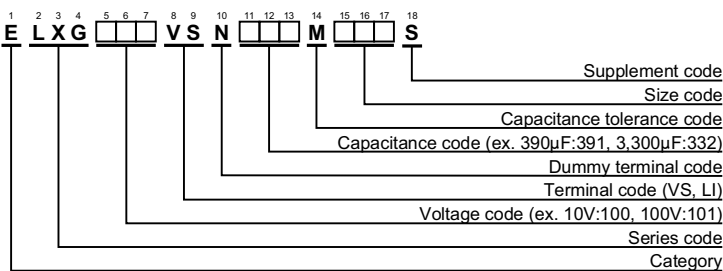
*φD=35mm : 3.5±0.5mm

The standard design has no plastic disc.

- Terminal Code : LI (φ35)



◆PART NUMBERING SYSTEM



Please refer to "Product code guide (snap-in type)"

◆RATED RIPPLE CURRENT MULTIPLIERS

- Frequency Multipliers

| Frequency (Hz) | 50 | 120 | 300 | 1k | 10k | 50k |
|--------------------------|------|------|------|------|------|------|
| 10 to 50V _{dc} | 0.95 | 1.00 | 1.03 | 1.05 | 1.08 | 1.08 |
| 63 to 100V _{dc} | 0.92 | 1.00 | 1.07 | 1.13 | 1.19 | 1.20 |

The endurance of capacitors is reduced with internal heating produced by ripple current at the rate of halving the lifetime with every 5°C rise. When long life performance is required in actual use, the rms ripple current has to be reduced.



◆STANDARD RATINGS

| WV (Vdc) | Cap (μF) | Case size φDXL(mm) | tanδ | Rated ripple current (Arms/105°C,120Hz) | Part No. | WV (Vdc) | Cap (μF) | Case size φDXL(mm) | tanδ | Rated ripple current (Arms/105°C,120Hz) | Part No. |
|----------|----------|--------------------|------|---|--------------------|----------|-----------|--------------------|------|---|--------------------|
| 10 | 6,800 | 22 × 25 | 0.60 | 1.30 | ELXG100VSN682MP25S | 35 | 5,600 | 25.4 × 35 | 0.25 | 1.98 | ELXG350VSN562MQ35S |
| | 10,000 | 22 × 30 | 0.60 | 1.65 | ELXG100VSN103MP30S | | 5,600 | 30 × 30 | 0.25 | 1.98 | ELXG350VSN562MR30S |
| | 10,000 | 25.4 × 25 | 0.60 | 1.64 | ELXG100VSN103MQ25S | | 5,600 | 35 × 25 | 0.25 | 2.03 | ELXG350VSN562MA25S |
| | 12,000 | 22 × 35 | 0.60 | 1.85 | ELXG100VSN123MP35S | | 6,800 | 22 × 50 | 0.25 | 2.26 | ELXG350VSN682MP50S |
| | 12,000 | 25.4 × 30 | 0.60 | 1.85 | ELXG100VSN123MQ30S | | 6,800 | 25.4 × 40 | 0.25 | 2.24 | ELXG350VSN682MQ40S |
| | 12,000 | 30 × 25 | 0.60 | 1.89 | ELXG100VSN123MR25S | | 8,200 | 25.4 × 50 | 0.25 | 2.57 | ELXG350VSN822MQ50S |
| | 15,000 | 22 × 40 | 0.60 | 2.12 | ELXG100VSN153MP40S | | 8,200 | 30 × 35 | 0.25 | 2.50 | ELXG350VSN822MR35S |
| | 15,000 | 25.4 × 35 | 0.60 | 2.16 | ELXG100VSN153MQ35S | | 8,200 | 35 × 30 | 0.25 | 2.55 | ELXG350VSN822MA30S |
| | 18,000 | 22 × 50 | 0.60 | 2.45 | ELXG100VSN183MP50S | | 10,000 | 30 × 40 | 0.25 | 2.86 | ELXG350VSN103MR40S |
| | 18,000 | 25.4 × 40 | 0.60 | 2.43 | ELXG100VSN183MQ40S | | 10,000 | 35 × 35 | 0.25 | 2.88 | ELXG350VSN103MA35S |
| | 18,000 | 30 × 30 | 0.60 | 2.37 | ELXG100VSN183MR30S | | 12,000 | 30 × 50 | 0.25 | 3.32 | ELXG350VSN123MR50S |
| | 18,000 | 35 × 25 | 0.60 | 2.42 | ELXG100VSN183MA25S | | 12,000 | 35 × 40 | 0.25 | 3.30 | ELXG350VSN123MA40S |
| | 22,000 | 30 × 35 | 0.60 | 2.73 | ELXG100VSN223MR35S | | 18,000 | 35 × 50 | 0.25 | 4.29 | ELXG350VSN183MA50S |
| | 22,000 | 35 × 30 | 0.60 | 2.79 | ELXG100VSN223MA30S | | 1,500 | 22 × 25 | 0.20 | 1.02 | ELXG500VSN222MP25S |
| | 27,000 | 25.4 × 50 | 0.60 | 3.11 | ELXG100VSN273MQ50S | | 1,800 | 22 × 30 | 0.20 | 1.17 | ELXG500VSN182MP30S |
| | 27,000 | 30 × 40 | 0.60 | 3.13 | ELXG100VSN273MR40S | | 1,800 | 25.4 × 25 | 0.20 | 1.17 | ELXG500VSN182MQ25S |
| | 33,000 | 35 × 35 | 0.60 | 3.49 | ELXG100VSN333MA35S | | 2,200 | 22 × 35 | 0.20 | 1.33 | ELXG500VSN222MP35S |
| | 39,000 | 30 × 50 | 0.60 | 3.99 | ELXG100VSN393MR50S | | 2,700 | 22 × 40 | 0.20 | 1.51 | ELXG500VSN272MP40S |
| | 39,000 | 35 × 40 | 0.60 | 3.96 | ELXG100VSN393MA40S | | 2,700 | 25.4 × 30 | 0.20 | 1.47 | ELXG500VSN272MQ30S |
| | 47,000 | 35 × 50 | 0.60 | 4.62 | ELXG100VSN473MA50S | | 2,700 | 30 × 25 | 0.20 | 1.50 | ELXG500VSN272MR25S |
| 16 | 5,600 | 22 × 25 | 0.45 | 1.44 | ELXG160VSN562MP25S | 3,300 | 25.4 × 35 | 0.20 | 1.70 | ELXG500VSN332MQ35S | |
| | 6,800 | 22 × 30 | 0.45 | 1.66 | ELXG160VSN682MP30S | 3,300 | 30 × 30 | 0.20 | 1.70 | ELXG500VSN332MR30S | |
| | 6,800 | 25.4 × 25 | 0.45 | 1.66 | ELXG160VSN682MQ25S | 3,300 | 35 × 25 | 0.20 | 1.74 | ELXG500VSN332MA25S | |
| | 8,200 | 22 × 35 | 0.45 | 1.87 | ELXG160VSN822MP35S | 3,900 | 22 × 50 | 0.20 | 1.91 | ELXG500VSN392MP50S | |
| | 10,000 | 22 × 40 | 0.45 | 2.12 | ELXG160VSN103MP40S | 3,900 | 25.4 × 40 | 0.20 | 1.89 | ELXG500VSN392MQ40S | |
| | 10,000 | 25.4 × 30 | 0.45 | 2.07 | ELXG160VSN103MQ30S | 4,700 | 30 × 35 | 0.20 | 2.11 | ELXG500VSN472MR35S | |
| | 10,000 | 30 × 25 | 0.45 | 2.11 | ELXG160VSN103MR25S | 4,700 | 35 × 30 | 0.20 | 2.16 | ELXG500VSN472MA30S | |
| | 12,000 | 25.4 × 35 | 0.45 | 2.37 | ELXG160VSN123MQ35S | 5,600 | 25.4 × 50 | 0.20 | 2.38 | ELXG500VSN562MQ50S | |
| | 12,000 | 30 × 30 | 0.45 | 2.37 | ELXG160VSN123MR30S | 5,600 | 30 × 40 | 0.20 | 2.39 | ELXG500VSN562MR40S | |
| | 12,000 | 35 × 25 | 0.45 | 2.42 | ELXG160VSN123MA25S | 5,600 | 35 × 35 | 0.20 | 2.41 | ELXG500VSN562MA35S | |
| | 15,000 | 22 × 50 | 0.45 | 2.74 | ELXG160VSN153MP50S | 6,800 | 30 × 50 | 0.20 | 2.79 | ELXG500VSN682MR50S | |
| | 15,000 | 25.4 × 40 | 0.45 | 2.71 | ELXG160VSN153MQ40S | 6,800 | 35 × 40 | 0.20 | 2.78 | ELXG500VSN682MA40S | |
| | 18,000 | 25.4 × 50 | 0.45 | 3.11 | ELXG160VSN183MQ50S | 10,000 | 35 × 50 | 0.20 | 3.57 | ELXG500VSN103MA50S | |
| | 18,000 | 30 × 35 | 0.45 | 3.02 | ELXG160VSN183MR35S | 1,000 | 22 × 25 | 0.15 | 1.00 | ELXG630VSN102MP25S | |
| | 18,000 | 35 × 30 | 0.45 | 3.09 | ELXG160VSN183MA30S | 1,200 | 22 × 30 | 0.15 | 1.15 | ELXG630VSN122MP30S | |
| | 22,000 | 30 × 40 | 0.45 | 3.46 | ELXG160VSN223MR40S | 1,200 | 25.4 × 25 | 0.15 | 1.15 | ELXG630VSN122MQ25S | |
| | 22,000 | 35 × 35 | 0.45 | 3.49 | ELXG160VSN223MA35S | 1,500 | 22 × 35 | 0.15 | 1.32 | ELXG630VSN152MP35S | |
| | 27,000 | 30 × 50 | 0.45 | 4.07 | ELXG160VSN273MR50S | 1,800 | 22 × 40 | 0.15 | 1.49 | ELXG630VSN182MP40S | |
| | 27,000 | 35 × 40 | 0.45 | 4.04 | ELXG160VSN273MA40S | 1,800 | 25.4 × 30 | 0.15 | 1.45 | ELXG630VSN182MQ30S | |
| | 39,000 | 35 × 50 | 0.45 | 5.16 | ELXG160VSN393MA50S | 1,800 | 30 × 25 | 0.15 | 1.48 | ELXG630VSN182MR25S | |
| 25 | 3,900 | 22 × 25 | 0.30 | 1.31 | ELXG250VSN392MP25S | 2,200 | 25.4 × 35 | 0.15 | 1.67 | ELXG630VSN222MQ35S | |
| | 4,700 | 22 × 30 | 0.30 | 1.51 | ELXG250VSN472MP30S | 2,200 | 30 × 30 | 0.15 | 1.68 | ELXG630VSN222MR30S | |
| | 4,700 | 25.4 × 25 | 0.30 | 1.51 | ELXG250VSN472MQ25S | 2,200 | 35 × 25 | 0.15 | 1.71 | ELXG630VSN222MA25S | |
| | 5,600 | 22 × 35 | 0.30 | 1.70 | ELXG250VSN562MP35S | 2,700 | 22 × 50 | 0.15 | 1.92 | ELXG630VSN272MP50S | |
| | 6,800 | 22 × 40 | 0.30 | 1.92 | ELXG250VSN682MP40S | 2,700 | 25.4 × 40 | 0.15 | 1.90 | ELXG630VSN272MQ40S | |
| | 6,800 | 25.4 × 30 | 0.30 | 1.87 | ELXG250VSN682MQ30S | 2,700 | 30 × 35 | 0.15 | 1.93 | ELXG630VSN272MR35S | |
| | 6,800 | 30 × 25 | 0.30 | 1.90 | ELXG250VSN682MR25S | 3,300 | 25.4 × 50 | 0.15 | 2.20 | ELXG630VSN332MQ50S | |
| | 8,200 | 25.4 × 35 | 0.30 | 2.14 | ELXG250VSN822MQ35S | 3,300 | 35 × 30 | 0.15 | 2.18 | ELXG630VSN332MA30S | |
| | 8,200 | 30 × 30 | 0.30 | 2.15 | ELXG250VSN822MR30S | 3,900 | 30 × 40 | 0.15 | 2.41 | ELXG630VSN392MR40S | |
| | 8,200 | 35 × 25 | 0.30 | 2.19 | ELXG250VSN822MA25S | 3,900 | 35 × 35 | 0.15 | 2.43 | ELXG630VSN392MA35S | |
| | 10,000 | 22 × 50 | 0.30 | 2.45 | ELXG250VSN103MP50S | 4,700 | 30 × 50 | 0.15 | 2.80 | ELXG630VSN472MR50S | |
| | 10,000 | 25.4 × 40 | 0.30 | 2.43 | ELXG250VSN103MQ40S | 4,700 | 35 × 40 | 0.15 | 2.78 | ELXG630VSN472MA40S | |
| | 12,000 | 25.4 × 50 | 0.30 | 2.78 | ELXG250VSN123MQ50S | 6,800 | 35 × 50 | 0.15 | 3.55 | ELXG630VSN682MA50S | |
| | 12,000 | 30 × 35 | 0.30 | 2.70 | ELXG250VSN123MR35S | 680 | 22 × 25 | 0.15 | 0.97 | ELXG800VSN681MP25S | |
| | 12,000 | 35 × 30 | 0.30 | 2.76 | ELXG250VSN123MA30S | 820 | 22 × 30 | 0.15 | 1.12 | ELXG800VSN821MP30S | |
| | 15,000 | 30 × 40 | 0.30 | 3.13 | ELXG250VSN153MR40S | 1,000 | 22 × 35 | 0.15 | 1.27 | ELXG800VSN102MP35S | |
| | 15,000 | 35 × 35 | 0.30 | 3.16 | ELXG250VSN153MA35S | 1,000 | 25.4 × 25 | 0.15 | 1.23 | ELXG800VSN102MQ25S | |
| | 18,000 | 30 × 50 | 0.30 | 3.64 | ELXG250VSN183MR50S | 1,200 | 22 × 40 | 0.15 | 1.42 | ELXG800VSN122MP40S | |
| | 18,000 | 35 × 40 | 0.30 | 3.61 | ELXG250VSN183MA40S | 1,200 | 25.4 × 30 | 0.15 | 1.39 | ELXG800VSN122MQ30S | |
| | 27,000 | 35 × 50 | 0.30 | 4.70 | ELXG250VSN273MA50S | 1,200 | 30 × 25 | 0.15 | 1.41 | ELXG800VSN122MR25S | |
| 35 | 2,200 | 22 × 25 | 0.25 | 1.10 | ELXG350VSN222MP25S | 1,500 | 25.4 × 35 | 0.15 | 1.62 | ELXG800VSN152MQ35S | |
| | 3,300 | 22 × 30 | 0.25 | 1.42 | ELXG350VSN332MP30S | 1,800 | 22 × 50 | 0.15 | 1.84 | ELXG800VSN182MP50S | |
| | 3,300 | 25.4 × 25 | 0.25 | 1.41 | ELXG350VSN332MQ25S | 1,800 | 25.4 × 40 | 0.15 | 1.82 | ELXG800VSN182MQ40S | |
| | 3,900 | 22 × 35 | 0.25 | 1.58 | ELXG350VSN392MP35S | 1,800 | 30 × 30 | 0.15 | 1.78 | ELXG800VSN182MR30S | |
| | 3,900 | 25.4 × 30 | 0.25 | 1.58 | ELXG350VSN392MQ30S | 1,800 | 35 × 25 | 0.15 | 1.82 | ELXG800VSN182MA25S | |
| | 4,700 | 22 × 40 | 0.25 | 1.78 | ELXG350VSN472MP40S | 2,200 | 25.4 × 50 | 0.15 | 2.11 | ELXG800VSN222MQ50S | |
| | 4,700 | 30 × 25 | 0.25 | 1.77 | ELXG350VSN472MR25S | 2,200 | 30 × 35 | 0.15 | 2.05 | ELXG800VSN222MR35S | |

◆STANDARD RATINGS

| WV (Vdc) | Cap (μF) | Case size φD×L(mm) | tanδ | Rated ripple current (Arms/105°C,120Hz) | Part No. | WV (Vdc) | Cap (μF) | Case size φD×L(mm) | tanδ | Rated ripple current (Arms/105°C,120Hz) | Part No. |
|----------|----------|--------------------|------|---|--------------------|----------|----------|--------------------|------|---|--------------------|
| 80 | 2,200 | 35×30 | 0.15 | 2.09 | ELXG800VSN222MA30S | 100 | 1,000 | 25.4×35 | 0.15 | 1.41 | ELXG101VSN102MQ35S |
| | 2,700 | 30×40 | 0.15 | 2.35 | ELXG800VSN272MR40S | | 1,000 | 30×30 | 0.15 | 1.42 | ELXG101VSN102MR30S |
| | 2,700 | 35×35 | 0.15 | 2.37 | ELXG800VSN272MA35S | | 1,000 | 35×25 | 0.15 | 1.45 | ELXG101VSN102MA25S |
| | 3,300 | 30×50 | 0.15 | 2.75 | ELXG800VSN332MR50S | | 1,200 | 22×50 | 0.15 | 1.60 | ELXG101VSN122MP50S |
| | 3,300 | 35×40 | 0.15 | 2.73 | ELXG800VSN332MA40S | | 1,200 | 25.4×40 | 0.15 | 1.59 | ELXG101VSN122MQ40S |
| | 4,700 | 35×50 | 0.15 | 3.46 | ELXG800VSN472MA50S | | 1,200 | 30×35 | 0.15 | 1.61 | ELXG101VSN122MR35S |
| 100 | 390 | 22×25 | 0.15 | 0.78 | ELXG101VSN391MP25S | | 1,500 | 25.4×50 | 0.15 | 1.86 | ELXG101VSN152MQ50S |
| | 560 | 22×30 | 0.15 | 0.99 | ELXG101VSN561MP30S | | 1,500 | 30×40 | 0.15 | 1.87 | ELXG101VSN152MR40S |
| | 560 | 25.4×25 | 0.15 | 0.98 | ELXG101VSN561MQ25S | | 1,500 | 35×30 | 0.15 | 1.85 | ELXG101VSN152MA30S |
| | 680 | 22×35 | 0.15 | 1.12 | ELXG101VSN681MP35S | | 1,800 | 35×35 | 0.15 | 2.07 | ELXG101VSN182MA35S |
| | 820 | 22×40 | 0.15 | 1.26 | ELXG101VSN821MP40S | | 2,200 | 30×50 | 0.15 | 2.40 | ELXG101VSN222MR50S |
| | 820 | 25.4×30 | 0.15 | 1.23 | ELXG101VSN821MQ30S | | 2,200 | 35×40 | 0.15 | 2.39 | ELXG101VSN222MA40S |
| | 820 | 30×25 | 0.15 | 1.25 | ELXG101VSN821MR25S | | 2,700 | 35×50 | 0.15 | 2.81 | ELXG101VSN272MA50S |

◆MAXIMUM IMPEDANCE [mΩ/20°C, 30kHz]

| Case size φD×L (mm) | V _{dc} | | |
|---------------------|-----------------|-----|-----|
| | 10 to 63 | 80 | 100 |
| 22×25 | 120 | 150 | |
| 22×30 | 100 | 120 | |
| 22×35 | 80 | 95 | |
| 22×40 | 70 | 80 | |
| 22×50 | 50 | 60 | |
| 25.4×25 | 90 | 110 | |
| 25.4×30 | 70 | 85 | |
| 25.4×35 | 60 | 70 | |
| 25.4×40 | 50 | 60 | |
| 25.4×50 | 40 | 45 | |
| 30×25 | 70 | 80 | |
| 30×30 | 50 | 60 | |
| 30×35 | 40 | 50 | |
| 30×40 | 35 | 40 | |
| 30×50 | 25 | 30 | |
| 35×25 | 65 | 70 | |
| 35×30 | 45 | 50 | |
| 35×35 | 38 | 40 | |
| 35×40 | 30 | 30 | |
| 35×50 | 23 | 25 | |