

A		B		C																D								E							
PART No.	D1=D2	H	'A' MAX.	L																															
HTSM-M3-L-5-2	M3	5.0 [.197]	1.0 [.040]	5.0	8.0	10.0	12.0	15.0	18.0	20.0	25.0	30.0	35.0	40.0	50.0	60.0	70.0	80.0	[.197]	[.315]	[.394]	[.473]	[.591]	[.709]	[.788]	[.985]	[1.182]	[1.377]	[1.575]	[1.969]	[2.363]	[2.756]	[3.150]		
HTSM-M3-L-5.5-2	M3	5.5 [.217]	1.0 [.040]	5.0	8.0	10.0	12.0	15.0	18.0	20.0	25.0	30.0	35.0	40.0	50.0	60.0	70.0	80.0	[.197]	[.315]	[.394]	[.473]	[.591]	[.709]	[.788]	[.985]	[1.182]	[1.377]	[1.575]	[1.969]	[2.363]	[2.756]	[3.150]		
HTSM-M4-L-7-2	M4	7.0 [.276]	1.4 [.055]	8.0	10.0	12.0	15.0	18.0	20.0	25.0	30.0	35.0	40.0	50.0	60.0	70.0	80.0	[.315]	[.394]	[.473]	[.591]	[.709]	[.788]	[.985]	[1.182]	[1.377]	[1.575]	[1.969]	[2.363]	[2.756]	[3.150]				
HTSM-M5-L-8-2	M5	8.0 [.315]	1.6 [.063]	10.0	12.0	15.0	18.0	20.0	25.0	30.0	35.0	40.0	50.0	60.0	70.0	80.0	[.394]	[.473]	[.591]	[.709]	[.788]	[.985]	[1.182]	[1.377]	[1.575]	[1.969]	[2.363]	[2.756]	[3.150]						
STYLE 2			P1	8.0	8.0	8.0	8.0	8.0	8.0	8.0	10.0	10.0	10.0	10.0	10.0	10.0	10.0	[.315]	[.315]	[.315]	[.315]	[.315]	[.315]	[.315]	[.394]	[.394]	[.394]	[.394]	[.394]	[.394]	[.394]				
			P2	3.0	4.0	6.0	8.0	8.0	8.0	8.0	10.0	10.0	10.0	10.0	10.0	10.0	10.0	10.0	[.119]	[.158]	[.237]	[.315]	[.315]	[.315]	[.315]	[.394]	[.394]	[.394]	[.394]	[.394]	[.394]	[.394]			
			P3	4.3	6.5	8.5	10.0	13.0	15.0	15.0	15.0	15.0	15.0	15.0	15.0	15.0	15.0	15.0	[.169]	[.255]	[.334]	[.394]	[.511]	[.591]	[.591]	[.591]	[.591]	[.591]	[.591]	[.591]	[.591]	[.591]	[.591]		

A		B		C																D								E							
PART No.	D1=D2	H	'A' MAX.	L																															
HTSM-M6-L-9-2	M6	9.0 [.355]	2.0 [.079]	10.0	12.0	15.0	18.0	20.0	25.0	30.0	35.0	40.0	50.0	60.0	70.0	80.0	[.394]	[.473]	[.591]	[.709]	[.788]	[.985]	[1.182]	[1.377]	[1.575]	[1.969]	[2.363]	[2.756]	[3.150]						
STYLE 2			P1	8.0	8.0	8.0	8.0	8.0	8.0	8.0	10.0	10.0	10.0	10.0	10.0	10.0	[.315]	[.315]	[.315]	[.315]	[.315]	[.315]	[.315]	[.394]	[.394]	[.394]	[.394]	[.394]	[.394]	[.394]					
			P2	6.0	8.0	8.0	8.0	8.0	10.0	10.0	10.0	10.0	10.0	10.0	10.0	10.0	10.0	[.237]	[.315]	[.315]	[.315]	[.315]	[.394]	[.394]	[.394]	[.394]	[.394]	[.394]	[.394]	[.394]					
			P3	8.5	10.5	13.0	15.0	15.0	15.0	15.0	15.0	15.0	15.0	15.0	15.0	15.0	15.0	[.334]	[.413]	[.511]	[.511]	[.591]	[.591]	[.591]	[.591]	[.591]	[.591]	[.591]	[.591]	[.591]					

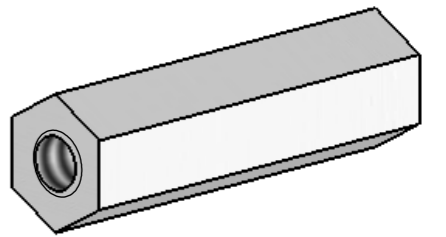
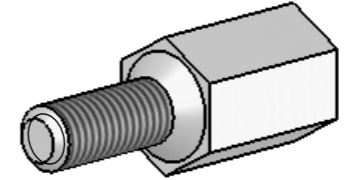
A		B		C																D								E							
PART No.	D1=D2	H	'A' MAX.	L																															
HTSM-M6-L-10-2	M6	10.0 [.197]	2.0 [.079]	10.0	12.0	15.0	18.0	20.0	25.0	30.0	35.0	40.0	50.0	60.0	70.0	80.0	[.394]	[.473]	[.591]	[.709]	[.788]	[.985]	[1.182]	[1.377]	[1.575]	[1.969]	[2.363]	[2.756]	[3.150]						
STYLE 2			P1	12.0	12.0	12.0	12.0	12.0	12.0	12.0	12.0	12.0	12.0	12.0	12.0	12.0	[.473]	[.473]	[.473]	[.473]	[.473]	[.473]	[.473]	[.473]	[.473]	[.473]	[.473]	[.473]	[.473]						
			P2	6.0	8.0	8.0	8.0	8.0	10.0	10.0	10.0	10.0	10.0	10.0	10.0	10.0	10.0	[.237]	[.315]	[.315]	[.315]	[.315]	[.394]	[.394]	[.394]	[.394]	[.394]	[.394]	[.394]	[.394]					
			P3	8.5	10.5	13.0	16.0	18.0	18.0	18.0	18.0	18.0	18.0	18.0	18.0	18.0	18.0	[.334]	[.413]	[.511]	[.629]	[.709]	[.709]	[.709]	[.709]	[.709]	[.709]	[.709]	[.709]	[.709]					

A		B		C																D								E							
PART No.	D1=D2	H		L																															
HTSM-M3-L-5-1	M3	5.0 [.197]		5.0	8.0	10.0	12.0	15.0	18.0	20.0	25.0	30.0	35.0	40.0	50.0	60.0	70.0	80.0	[.197]	[.315]	[.394]	[.473]	[.591]	[.709]	[.788]	[.985]	[1.182]	[1.377]	[1.575]	[1.969]	[2.363]	[2.756]	[3.150]		
HTSM-M3-L-5.5-1	M3	5.5 [.217]		5.0	7.0	8.0	10.0	12.0	15.0	18.0	20.0	25.0	30.0	35.0	40.0	50.0	60.0	70.0	80.0	[.197]	[.275]	[.315]	[.394]	[.473]	[.591]	[.709]	[.788]	[.985]	[1.182]	[1.377]	[1.575]	[1.969]	[2.363]	[2.756]	[3.150]
HTSM-M4-L-7-1	M4	7.0 [.276]		8.0	10.0	12.0	15.0	18.0	20.0	25.0	30.0	35.0	40.0	50.0	60.0	70.0	80.0	[.315]	[.394]	[.473]	[.591]	[.709]	[.788]	[.985]	[1.182]	[1.377]	[1.575]	[1.969]	[2.363]	[2.756]	[3.150]				
HTSM-M5-L-8-1	M5	8.0 [.315]		10.0	12.0	15.0	18.0	20.0	25.0	30.0	35.0	40.0	50.0	60.0	70.0	80.0	[.394]	[.473]	[.591]	[.709]	[.788]	[.985]	[1.182]	[1.377]	[1.575]	[1.969]	[2.363]	[2.756]	[3.150]						
HTSM-M6-L-10-1	M6	10.0 [.394]		10.0	12.0	15.0	18.0	20.0	25.0	30.0	35.0	40.0	50.0	60.0	70.0	80.0	[.394]	[.473]	[.591]	[.709]	[.788]	[.985]	[1.182]	[1.377]	[1.575]	[1.969]	[2.363]	[2.756]	[3.150]						

A		B		C																D								E							
STYLE 1		P1=P2		L																															
				THROUGH																M3-M5 = 10 MIN [.394]								M6 = 12 MIN [.473]							
		P3		THROUGH																M3-M5 = 15 [.591]								M6 = 18 [.709]							

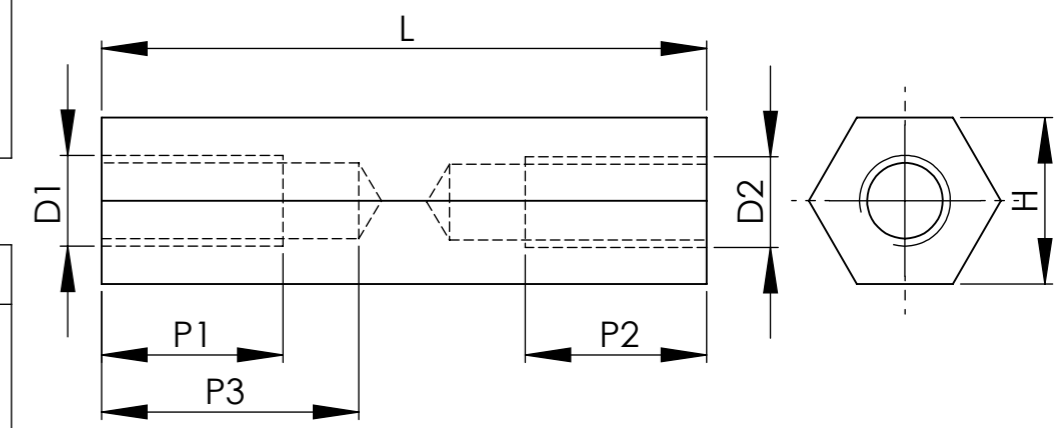
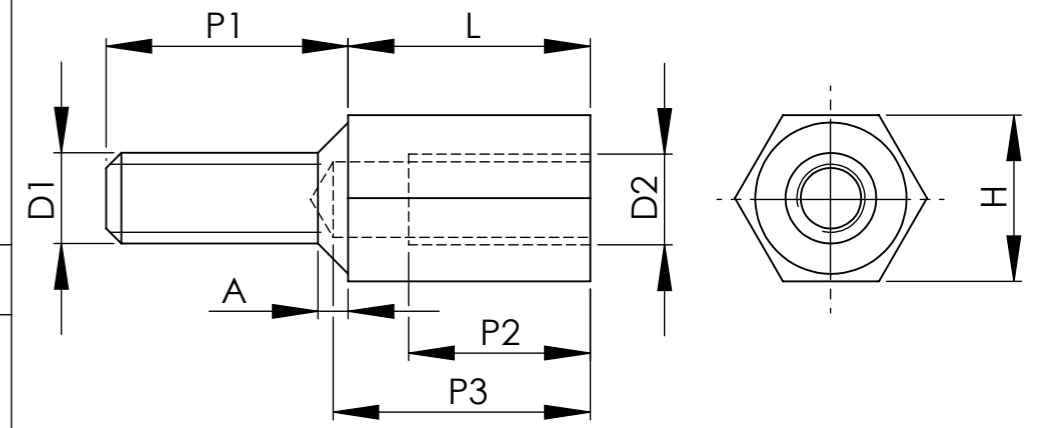
NOTES:
1) ALL PRIMARY DIMENSIONS IN mm,
SECONDARY DIMENSIONS IN [INCHES].

REV.	MODIFICATION.	DATE	DRN
02	ECN 04-218	09/12/04	NJB
03	ECN 05-013	13/01/05	NJB
04	ECN 05-045	07/04/05	NJB
05	ECN 06-007	17/03/06	OW
06	ECN 06-260	13/12/06	SF
07	ECN 07-224	06/12/07	NJB
08	CO2010272	03/07/08	SF



STYLE 2 (MALE - FEMALE)

STYLE 1 (FEMALE - FEMALE)



INFORMATION CONTAINED IN THIS DOCUMENT IS CONFIDENTIAL TO RICHCO INTERNATIONAL Co. Ltd. AND MAY NOT BE DISCLOSED OR REPRODUCED IN WHOLE OR PART WITHOUT THEIR WRITTEN CONSENT

Richco

METRIC GENERAL TOLERANCES ±0.10
ARE PRIMARY UNLESS OTHERWISE STATED
1 DECIMAL PLACE ±
2 DECIMAL PLACES ±
ANGULAR ±1°

IMPERIAL GENERAL TOLERANCES ±0.004
ARE FOR REFERENCE UNLESS OTHERWISE STATED
1 DECIMAL PLACE ±
2 DECIMAL PLACES ±
ANGULAR ±1°

MATERIAL: MILD STEEL S300Pb(RMS-232)
ZINC PLATED Zn3B (RMS-236)

COLOUR:

TITLE: HEXAGONAL THREADED SPACER
MILD STEEL (ZINC PLATED)

PART No:
HTSM-MD-L-H-X

DRG No: 04-128

NPR REF:

SIZE A3

DRN	DATE	CHKD	DATE	SCALE	SHEET No
NJB	21/10/04	RC	22/10/04	NTS	1 OF 1