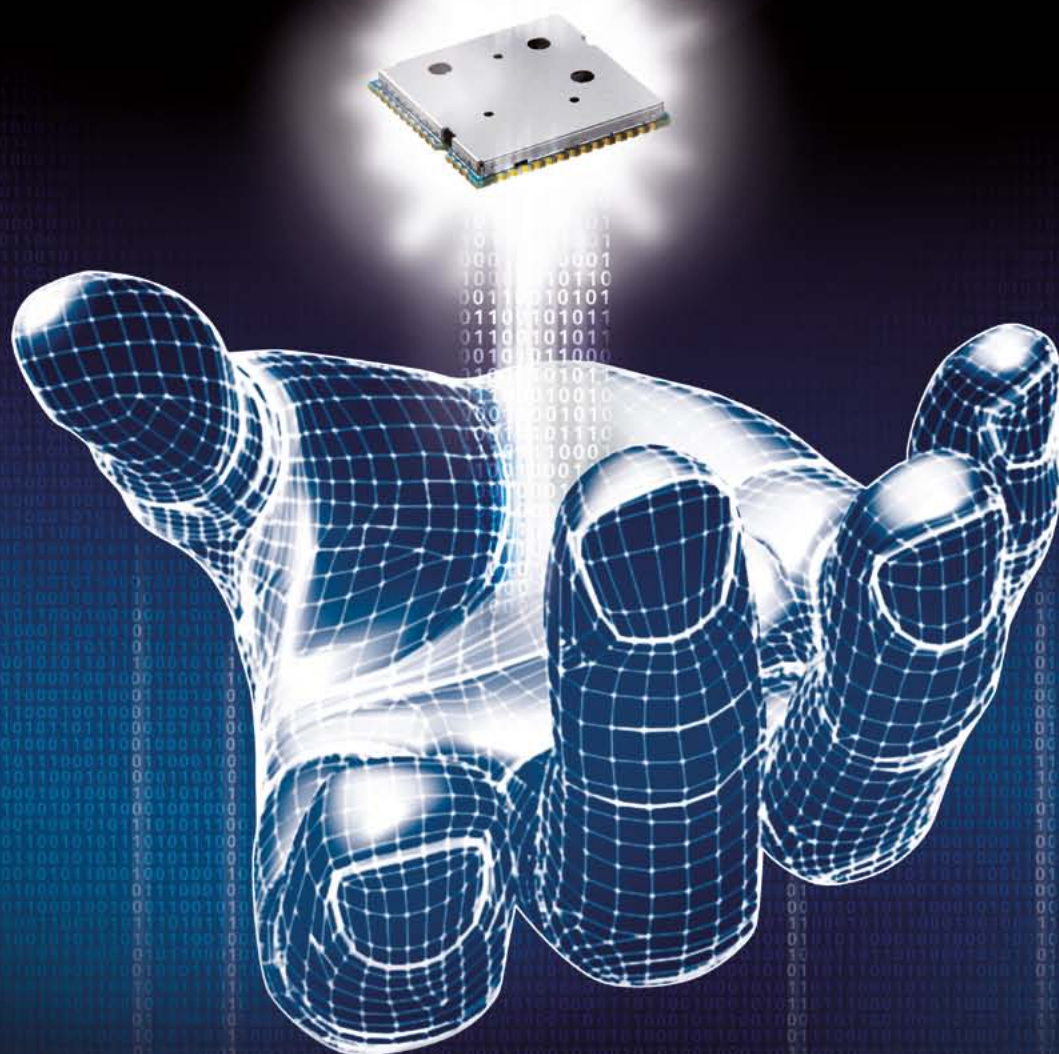


HiLo^{NC} V2

GPRS Module - LCC

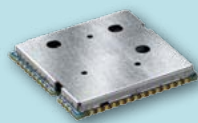
**OFFERING RELIABLE TECHNOLOGY TO
HIGHLY DEMANDING M2M APPLICATIONS**



Freedom of speech for smart machines

SAGEMCOM

PRODUCT OVERVIEW



Sagemcom's GPRS solution for highly demanding M2M applications:

- Smallest GPRS module available on the market, HiLo^{NC} V2 perfectly suits all your applications for which size matters! (Track&trace, POS...).
- Thanks to its extremely low power consumption, HiLo^{NC} V2 increases the autonomy of your battery powered applications (security, alarms...).
- With its extended operational temperature range, HiLo^{NC} V2 meets your most demanding requirements including for automotive markets.
- Last but not least, thanks to its very competitive positioning, HiLo^{NC} V2 creates new possibilities for all your cost-driven applications (Metering, automotive...).
- Fully designed, qualified and manufactured to comply with automotive's requirements (ISO TS 16949, PPAP, FMEA...), HiLo^{NC} V2 is the perfect choice for high quality first-mount automotive products.

Moreover, by choosing Sagemcom, you decide to select:

- A world class manufacturer
- A technology validated and approved worldwide
- A top of the range technical support
- The highest standards of quality

- GSM, GPRS Class 10
- Full Quad band Support:
850/900/1800/1900 MHz
- Extended sensitivity level
- Small and light
- Very low power consumption

- Complete embedded Internet connectivity
- Automotive grade SMT module
- Ruggedized design for automotive
- Dedicated high value features depending on options (eCall...)

TECHNICAL FEATURES

ENVIRONMENT

- SMT (LCC) type
- Size (L x W x H mm): 24 x 24 x 2.6
- Weight: < 3 g
- Full Type Approved: R&TTE, GCF, PTCRB, FCC, Rohs Compliancy
- Operational Temperature range: -40°C / +85 °C
- Power supply DC voltage (min / max / nominal): 3.2 V / 4.5 V / 3.7 V
- Consumption in Standby mode (can receive a call): < 1.25 mA
- Enhanced mechanical resistance for ruggedized environment
- Diagnostic temperature support
- Easy scan features
- Firmware upgrade Over The Air (FOTA option)
- Jamming detection
- RF burst indicator
- Antenna Connection & Detection

RADIO LINK

- Full Quad Band: EGSM 850, 900, 1800, 1900
- Output Power: Class 4 (2W) for 850 / 900 Mhz; Class 1 (1W) for 1800 / 1900 Mhz
- GPRS Multislot Class: class 10 (3+2 & 4+1)
- GPRS baudrates: DL up to 85,6 kbps, UL up to 42,8 kbps
- GPRS Coding Scheme: CS1 to CS 4
- Mobile Station Class B

DATA INTERFACES

- 2 serial Interfaces (incl. one for internal traces)
- Full Hardware and Software Flow Control
- AT commands set: GSM 07.05; 07.07; 07.10, Proprietary AT commands
- Multiplexing 07.10 serial interface
- Data over CSD 9,6 kbps
- Complete internet connectivity embedded: TCP, FTP, UDP, SMTP, POP3...
- 5 generals I/O & 1 ADC
- Reset input

AUDIO INTERFACE

- Voice codecs: HR, EFR, FR, AMR
- Analog audio interface
- Echo Cancellation & Noise reduction
- Digital audio (PCM) interface

GSM FEATURES

- Automatic hang up for Data call
- Internal Phonebook
- CLIP / CLIR / COLP / COLR
- Call wait / call hold, Conference call
- Call forwarding, Call Barring
- Supports of: FDN, USSD, Sim Toolkit, AoC
- PDU and Text mode SMS support
- MMS support (dedicated AT commands)
- Module reset/alarm based on RTC
- eCall and ERA-Glonass

LOCALIZATION

- SMS CB, Cell ID
- Network cells measurements

SECURITY

- Sim lock supported
- Device lock possibility
- Dedicated TAC for Customization purpose
- Sim 3V & 1.8 V supported

DEVELOPMENT AND SUPPORT TOOLS

- Extensive Documentations: HW Specs, Application Note, AT command list, pedagogical documentations
- Development board
- Upgrade tools
- Design, Certification & production support

All rights reserved. The information and specifications included are subject to change without prior notice. Sagemcom Energy & Telecom tries to ensure that all information in this document is correct, but does not accept liability for error or omission. Non contractual document. All trademarks are registered by their respective owners. Simplified joint stock company - Capital 44.824.840 Euros - 518 250 337 RCS Nanterre. 09/2011

Sagemcom Energy & Telecom SAS

Headquarters : 250, route de l'Empereur
92848 Rueil-Malmaison Cedex - FRANCE

Tel : +33 (0)1 57 61 10 00 - Fax : +33 (0)1 57 61 10 01

www.sagemcom.com

SAGEMCOM