

### Specifications

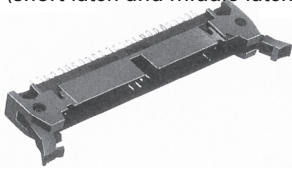
Insulation Resistance: 1,000MΩ min. at 500V DC  
 Withstanding Voltage: 1,000V AC rms for 1 minute  
 Contact Resistance: 30mΩ max. at 10mA  
 Current Rating: 1A  
 Operating Temp. Range: -20°C to +105°C  
 Soldering Temperature: 260°C / 10 sec.

### Materials and Finish

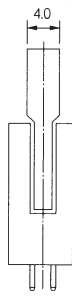
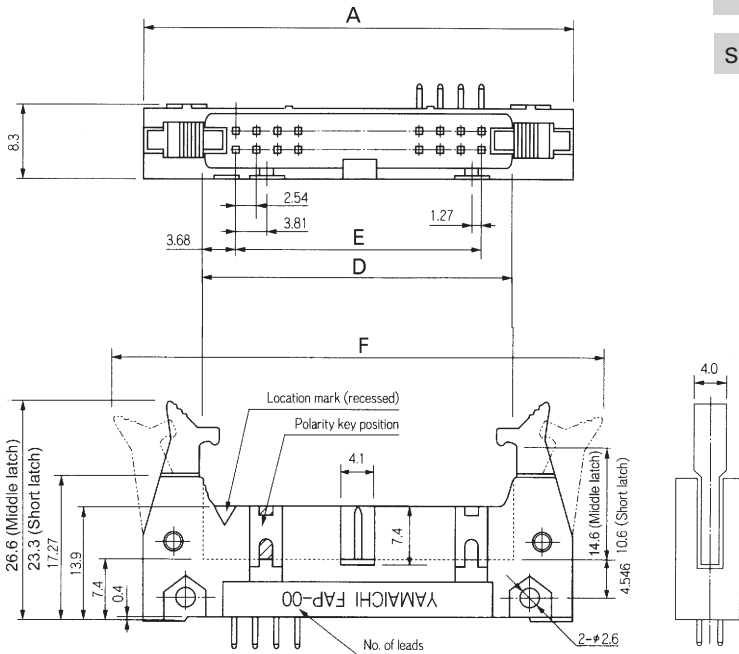
Housing: PBT, glass filled UL94V-0 rated  
 Latch: PA, glass filled UL94V-0 rated  
 Contacts: Phosphor Bronze  
 Plating: Contacts - Au over Nickel  
 Solder Terminals - Flash Au over Nickel

### Features

- 2.54 mm contact pitch connectors for MIL standard
- Variations include latch header plugs, box header plugs, and flat cable sockets
- Two types (short latch and middle latch) available



### Outline Dimensions



### Part Number (Details)

FAP - 3401 - 1 1 0 \* - 2 - 0 \* F

Series (plug)

No. of Leads

Housing Types:

- 1 = MIL Standard key slot  
(plus central key slot on 16 or more leads)
- 2 = Central key slot (10 leads only)

Latch Types:

- 1 = Short Latches (Height = 23.3mm, mating socket is without strain relief)
- 2 = Middle Latches (Height = 26.6mm, mating socket is with strain relief)

Terminal Types:

- 2 = Right Angle Solder Dip
- 4 = Straight Solder Dip

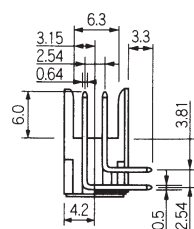
Housing Colour: 1 = Black, 2 = Blue (Standard)

0 = Mating Cables (1.27 pitch):  
 AWG 28 Stranded Wire or AWG 30 Solid Wire

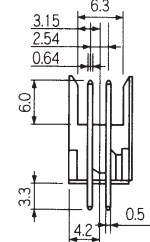
Contact Plating: A = Gold (0.76µm over Ni 2.5~4.5µm)  
 B = Gold (0.3µm over Ni 2.5~4.5µm)

Solder Terminal Plating: F = Flash Au over Ni

### Contact Details and Terminal Types

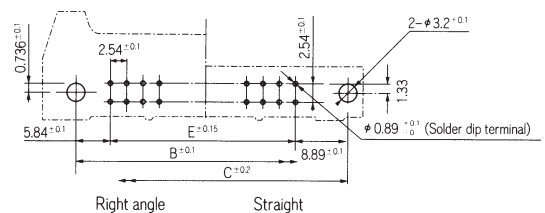


Type 02 - Right angle solder dip terminal



Type 04 - Straight solder dip terminal

### Recommended PCB Layout



Right angle Straight

Top View from Plug

Standard types see table.

For other versions please contact Yamaichi, minimum order quantity may be required

| Part Number         | No. of Leads | A     | B     | C     | D     | E     | F (max.) |
|---------------------|--------------|-------|-------|-------|-------|-------|----------|
| FAP-1001-2104-2-0AF | 10           | 32.00 | 21.84 | 27.94 | 17.52 | 10.16 | 48.52    |
| FAP-1001-2104-2-0BF | 10           | 32.00 | 21.84 | 27.94 | 17.52 | 10.16 | 48.52    |
| FAP-1001-2202-2-0AF | 10           | 32.00 | 21.84 | 27.94 | 17.52 | 10.16 | 48.52    |
| FAP-1001-2202-2-0BF | 10           | 32.00 | 21.84 | 27.94 | 17.52 | 10.16 | 48.52    |
| FAP-1001-2204-2-0AF | 10           | 32.00 | 21.84 | 27.94 | 17.52 | 10.16 | 48.52    |

Cont'd

# Series FAP

## MIL Std. Latch Header Plug, (2.54mm Pitch)

### Part Numbers (cont'd)

| Part Number         | No. of Leads | A      | B     | C     | D     | E     | F (max.) |
|---------------------|--------------|--------|-------|-------|-------|-------|----------|
| FAP-1001-2204-2-0BF | 10           | 32.00  | 21.84 | 27.94 | 17.52 | 10.16 | 48.52    |
| FAP-1401-1104-2-0AF | 14           | 37.20  | 26.84 | 32.12 | 23.34 | 15.24 | 52.24    |
| FAP-1401-1202-2-0BF | 14           | 37.20  | 26.84 | 32.12 | 23.34 | 15.24 | 52.24    |
| FAP-1401-1204-2-0AF | 14           | 37.20  | 26.84 | 32.12 | 23.34 | 15.24 | 52.24    |
| FAP-1401-1204-2-0BF | 14           | 37.20  | 26.84 | 32.12 | 23.34 | 15.24 | 52.24    |
| FAP-1601-1104-2-0AF | 16           | 39.62  | 29.46 | 35.56 | 25.14 | 17.78 | 56.14    |
| FAP-1601-1104-1-0BF | 16           | 39.62  | 29.46 | 35.56 | 25.14 | 17.78 | 56.14    |
| FAP-1601-1104-2-0AF | 16           | 39.62  | 29.46 | 35.56 | 25.14 | 17.78 | 56.14    |
| FAP-1601-1104-2-0BF | 16           | 39.62  | 29.46 | 35.56 | 25.14 | 17.78 | 56.14    |
| FAP-1601-1202-2-0AF | 16           | 39.62  | 29.46 | 35.56 | 25.14 | 17.78 | 56.14    |
| FAP-1601-1202-2-0BF | 16           | 39.62  | 29.46 | 35.56 | 25.14 | 17.78 | 56.14    |
| FAP-1601-1204-1-0BF | 16           | 39.62  | 29.46 | 35.56 | 25.14 | 17.78 | 56.14    |
| FAP-1601-1204-2-0BF | 16           | 39.62  | 29.46 | 35.56 | 25.14 | 17.78 | 56.14    |
| FAP-2001-1102-1-0BF | 20           | 44.70  | 34.54 | 40.64 | 30.22 | 22.86 | 61.22    |
| FAP-2001-1104-2-0AF | 20           | 44.70  | 34.54 | 40.64 | 30.22 | 22.86 | 61.22    |
| FAP-2001-1104-2-0BF | 20           | 44.70  | 34.54 | 40.64 | 30.22 | 22.86 | 61.22    |
| FAP-2001-1202-2-0AF | 20           | 44.70  | 34.54 | 40.64 | 30.22 | 22.86 | 61.22    |
| FAP-2001-1202-2-0BF | 20           | 44.70  | 34.54 | 40.64 | 30.22 | 22.86 | 61.22    |
| FAP-2001-1204-2-0AF | 20           | 44.70  | 34.54 | 40.64 | 30.22 | 22.86 | 61.22    |
| FAP-2001-1204-2-0BF | 20           | 44.70  | 34.54 | 40.64 | 30.22 | 22.86 | 61.22    |
| FAP-2601-1102-2-0AF | 26           | 52.32  | 42.16 | 48.26 | 37.84 | 30.48 | 68.84    |
| FAP-2601-1104-2-0AF | 26           | 52.32  | 42.16 | 48.26 | 37.84 | 30.48 | 68.84    |
| FAP-2601-1104-2-0BF | 26           | 52.32  | 42.16 | 48.26 | 37.84 | 30.48 | 68.84    |
| FAP-2601-1202-2-0AF | 26           | 52.32  | 42.16 | 48.26 | 37.84 | 30.48 | 68.84    |
| FAP-2601-1202-2-0BF | 26           | 52.32  | 42.16 | 48.26 | 37.84 | 30.48 | 68.84    |
| FAP-2601-1204-2-0AF | 26           | 52.32  | 42.16 | 48.26 | 37.84 | 30.48 | 68.84    |
| FAP-2601-1204-2-0BF | 26           | 52.32  | 42.16 | 48.26 | 37.84 | 30.48 | 68.84    |
| FAP-3001-1202-2-0BF | 30           | 57.40  | 47.24 | 53.42 | 42.92 | 35.56 | 73.92    |
| FAP-3401-1102-2-0AF | 34           | 62.48  | 52.32 | 58.42 | 48.00 | 40.64 | 79.00    |
| FAP-3401-1102-2-0BF | 34           | 62.48  | 52.32 | 58.42 | 48.00 | 40.64 | 79.00    |
| FAP-3401-1104-2-0AF | 34           | 62.48  | 52.32 | 58.42 | 48.00 | 40.64 | 79.00    |
| FAP-3401-1202-2-0AF | 34           | 62.48  | 52.32 | 58.42 | 48.00 | 40.64 | 79.00    |
| FAP-3401-1202-2-0BF | 34           | 62.48  | 52.32 | 58.42 | 48.00 | 40.64 | 79.00    |
| FAP-3401-1204-2-0AF | 34           | 62.48  | 52.32 | 58.42 | 48.00 | 40.64 | 79.00    |
| FAP-3401-1204-2-0BF | 34           | 62.48  | 52.32 | 58.42 | 48.00 | 40.64 | 79.00    |
| FAP-4001-1102-2-0AF | 40           | 70.10  | 59.94 | 66.04 | 55.62 | 48.26 | 86.62    |
| FAP-4001-1102-2-0BF | 40           | 70.10  | 59.94 | 66.04 | 55.62 | 48.26 | 86.62    |
| FAP-4001-1104-2-0AF | 40           | 70.10  | 59.94 | 66.04 | 55.62 | 48.26 | 86.62    |
| FAP-4001-1202-2-0AF | 40           | 70.10  | 59.94 | 66.04 | 55.62 | 48.26 | 86.62    |
| FAP-4001-1202-2-0BF | 40           | 70.10  | 59.94 | 66.04 | 55.62 | 48.26 | 86.62    |
| FAP-4001-1204-2-0AF | 40           | 70.10  | 59.94 | 66.04 | 55.62 | 48.26 | 86.62    |
| FAP-5001-1104-2-0AF | 50           | 82.80  | 72.64 | 78.74 | 68.32 | 60.96 | 99.32    |
| FAP-5001-1202-2-0AF | 50           | 82.80  | 72.64 | 78.74 | 68.32 | 60.96 | 99.32    |
| FAP-5001-1202-2-0BF | 50           | 82.80  | 72.64 | 78.74 | 68.32 | 60.96 | 99.32    |
| FAP-5001-1204-2-0AF | 50           | 82.80  | 72.64 | 78.74 | 68.32 | 60.96 | 99.32    |
| FAP-5001-1204-2-0BF | 50           | 82.80  | 72.64 | 78.74 | 68.32 | 60.96 | 99.32    |
| FAP-6001-1202-2-0BF | 60           | 95.50  | 85.34 | 91.44 | 81.02 | 73.66 | 112.02   |
| FAP-6001-1204-2-0AF | 60           | 95.50  | 85.34 | 91.44 | 81.02 | 73.66 | 112.02   |
| FAP-6001-1204-2-0BF | 60           | 95.50  | 85.34 | 91.44 | 81.02 | 73.66 | 112.02   |
| FAP-6401-1102-2-0AF | 64           | 100.60 | 90.42 | 96.52 | 86.10 | 78.74 | 117.10   |
| FAP-6401-1104-1-0BF | 64           | 100.60 | 90.42 | 96.52 | 86.10 | 78.74 | 117.10   |
| FAP-6401-1104-2-0AF | 64           | 100.60 | 90.42 | 96.52 | 86.10 | 78.74 | 117.10   |
| FAP-6401-1202-2-0AF | 64           | 100.60 | 90.42 | 96.52 | 86.10 | 78.74 | 117.10   |
| FAP-6401-1202-2-0BF | 64           | 100.60 | 90.42 | 96.52 | 86.10 | 78.74 | 117.10   |
| FAP-6401-1204-1-0BF | 64           | 100.60 | 90.42 | 96.52 | 86.10 | 78.74 | 117.10   |
| FAP-6401-1204-2-0AF | 64           | 100.60 | 90.42 | 96.52 | 86.10 | 78.74 | 117.10   |

2.54mm Board-to-Cable Connectors

## Specifications

Insulation Resistance: 1,000MΩ min. at 500V DC  
 Withstanding Voltage: 1,000V AC rms for 1 minute  
 Contact Resistance: 30mΩ max. at 10mA  
 Current Rating: 1A  
 Operating Temp. Range: -20°C to +105°C  
 Soldering Temperature: 260°C / 10 sec.



## Materials and Finish

Housing: PBT, glass filled UL94V-0 rated  
 Contacts: Copper Alloy  
 Plating: Contacts - Gold over Nickel  
 Solder Terminals - Flash Au over Ni



## Features

- 2.54mm contact pitch connectors for MIL standard
- Variations include latch header plugs, box header plugs, and flat cable sockets

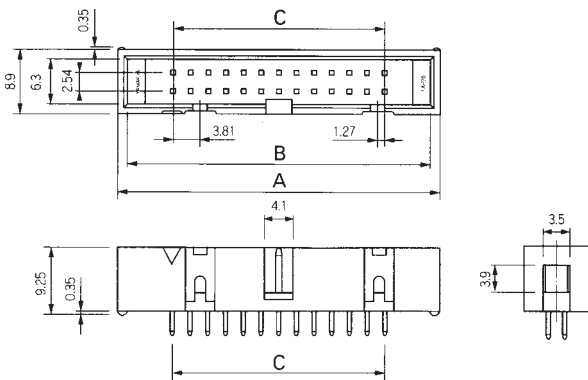
## Part Number (Details)

FAP - 34 - 08 - \* - 1 - 0 \* F

|   |  |
|---|--|
| Series (plug)                           |  |
| No. of Leads                            |  |
| Terminal Type:                          |  |
| 2 = Right Angle Solder Dip              |  |
| 4 = Straight Solder Dip                 |  |
| Housing Colour: 1 = Black, 2 = Blue     |  |
| Contact Plating:                        |  |
| A = Gold (0.76μm over Nickel 2.5-4.5μm) |  |
| B = Gold (0.3μm over Nickel 2.5-4.5μm)  |  |
| F = Flash Au over Ni                    |  |

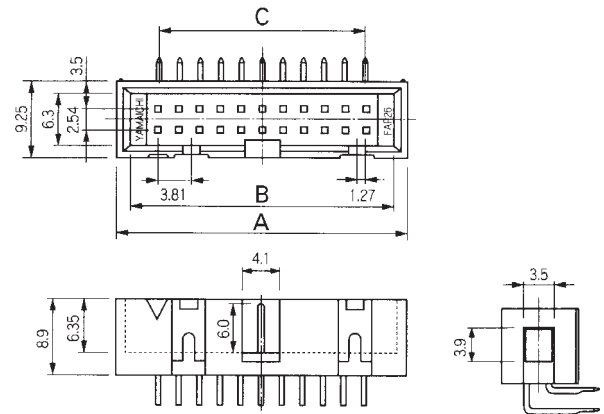
## Outline Dimensions

### Straight Solder Dip Type

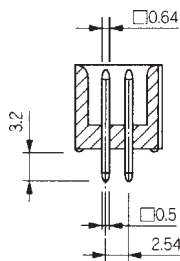


## Outline Dimensions

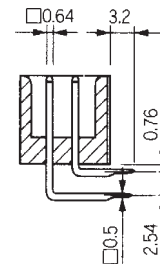
### Right Angle Solder Dip Type



## Contact Details

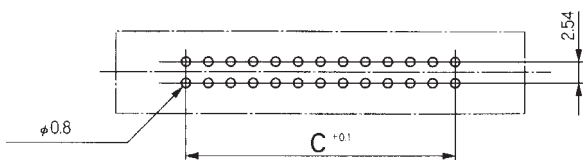


## Contact Details



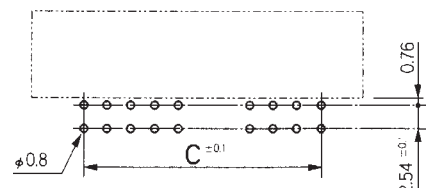
## Recommended PCB Layout

Top View from Plug



## Recommended PCB Layout

Top View from Plug



Standard types see table.

For other versions please contact Yamaichi, minimum order quantity may be required

## Part Numbers

| Part No.          | No. of Leads | A     | B     | C     |
|-------------------|--------------|-------|-------|-------|
| FAP-10-08-2-1-0BF | 10           | 20.30 | 17.90 | 10.16 |
| FAP-10-08-2-2-0AF | 10           | 20.30 | 17.90 | 10.16 |
| FAP-10-08-2-2-0BF | 10           | 20.30 | 17.90 | 10.16 |
| FAP-10-08-4-1-0BF | 10           | 20.30 | 17.90 | 10.16 |
| FAP-10-08-4-2-0AF | 10           | 20.30 | 17.90 | 10.16 |
| FAP-10-08-4-2-0BF | 10           | 20.30 | 17.90 | 10.16 |
| FAP-14-08-2-2-0AF | 14           | 25.40 | 23.00 | 15.24 |
| FAP-14-08-2-2-0BF | 14           | 25.40 | 23.00 | 15.24 |
| FAP-14-08-2-2-0BF | 14           | 25.40 | 23.00 | 15.24 |
| FAP-14-08-4-1-0BF | 14           | 25.40 | 23.00 | 15.24 |
| FAP-14-08-4-2-0AF | 14           | 25.40 | 23.00 | 15.24 |
| FAP-14-08-4-2-0BF | 14           | 25.40 | 23.00 | 15.24 |
| FAP-16-08-2-1-0BF | 16           | 27.90 | 25.50 | 17.78 |
| FAP-16-08-2-2-0AF | 16           | 27.90 | 25.50 | 17.78 |
| FAP-16-08-2-2-0BF | 16           | 27.90 | 25.50 | 17.78 |
| FAP-16-08-4-1-0BF | 16           | 27.90 | 25.50 | 17.78 |
| FAP-16-08-4-2-0AF | 16           | 27.90 | 25.50 | 17.78 |
| FAP-16-08-4-2-0BF | 16           | 27.90 | 25.50 | 17.78 |
| FAP-20-08-2-2-0AF | 20           | 33.00 | 30.60 | 22.86 |
| FAP-20-08-2-2-0BF | 20           | 33.00 | 30.60 | 22.86 |
| FAP-20-08-4-2-0AF | 20           | 33.00 | 30.60 | 22.86 |
| FAP-20-08-4-2-0BF | 20           | 33.00 | 30.60 | 22.86 |
| FAP-26-08-2-2-0AF | 26           | 40.60 | 38.20 | 30.48 |
| FAP-26-08-2-2-0BF | 26           | 40.60 | 38.20 | 30.48 |
| FAP-26-08-4-1-0BF | 26           | 40.60 | 38.20 | 30.48 |
| FAP-26-08-4-2-0AF | 26           | 40.60 | 38.20 | 30.48 |
| FAP-26-08-4-2-0BF | 26           | 40.60 | 38.20 | 30.48 |
| FAP-34-08-2-2-0AF | 34           | 50.80 | 48.40 | 40.64 |
| FAP-34-08-2-2-0BF | 34           | 50.80 | 48.40 | 40.64 |
| FAP-34-08-4-2-0AF | 34           | 50.80 | 48.40 | 40.64 |
| FAP-34-08-4-2-0BF | 34           | 50.80 | 48.40 | 40.64 |
| FAP-40-08-2-2-0AF | 40           | 58.40 | 56.00 | 48.26 |
| FAP-40-08-2-2-0BF | 40           | 58.40 | 56.00 | 48.26 |
| FAP-40-08-4-2-0AF | 40           | 58.40 | 56.00 | 48.26 |
| FAP-40-08-4-2-0BF | 40           | 58.40 | 56.00 | 48.26 |
| FAP-50-08-2-2-0BF | 50           | 71.10 | 68.70 | 60.96 |
| FAP-50-08-4-2-0AF | 50           | 71.10 | 68.70 | 60.96 |
| FAP-50-08-4-2-0BF | 50           | 71.10 | 68.70 | 60.96 |
| FAP-64-08-4-2-0AF | 64           | 88.90 | 86.50 | 78.74 |