

DM74ALS645A Octal Bus Transceivers

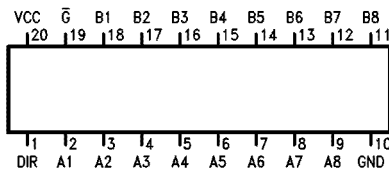
General Description

These octal bus transceivers are designed for asynchronous two-way communication between data busses. These devices transmit data from the A bus to the B bus or from the B bus to the A bus depending upon the level at the direction control (DIR) input. The enable input (G) can be used to disable the device so the busses are effectively isolated.

Features

- Advanced Oxide-isolated Ion-implanted Schottky TTL process
- Switching performance is guaranteed over full temperature and V_{CC} supply range
- Switching performance specified at 50 pF
- PNP input design reduces input loading

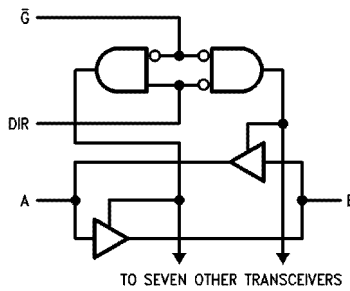
Connection and Logic Diagrams



TL/F/9304-1

Order Number DM74ALS645AWM or DM74ALS645AN
See NS Package Number M20B or N20A

'ALS645A



TL/F/9304-2

Function Table

Control Inputs		Operation
\bar{G}	DIR	
L	L	B Data to A Bus
L	H	A Data to B Bus
H	X	Isolation

Low = Low Logic Level
High = High Logic Level
X = Either Low or High Logic Level

Absolute Maximum Ratings (Note)

Supply Voltage	7V
Input Voltage; Control Inputs	7V
I/O ports	5.5V
Operating Free Air Temperature Range	
DM74ALS	0°C to +70°C
Storage Temperature Range	-65°C to +150°C
Typical θ_{JA}	
N Package	53.0°C/W
M Package	72.0°C/W

Note: The "Absolute Maximum Ratings" are those values beyond which the safety of the device cannot be guaranteed. The device should not be operated at these limits. The parametric values defined in the "Electrical Characteristics" table are not guaranteed at the absolute maximum ratings. The "Recommended Operating Conditions" table will define the conditions for actual device operation.

Recommended Operating Conditions

Symbol	Parameter	DM74ALS645A			Units
		Min	Typ	Max	
V_{CC}	Supply Voltage	4.5	5	5.5	V
V_{IH}	High Level Input Voltage	2			V
V_{IL}	Low Level Input Voltage			0.8	V
I_{OH}	High Level Output Current			-15	mA
I_{OL}	Low Level Output Current			24	mA
T_A	Operating Free Air Temperature Range	0		70	°C

Electrical Characteristics Over Recommended Free Air Temperature Range

Symbol	Parameter	Test Conditions	DM74ALS645A			Units	
			Min	Typ	Max		
V_{IC}	Input Clamp Voltage	$V_{CC} = \text{Min}, I_I = -18 \text{ mA}$			-1.5	V	
V_{OH}	High Level Output Voltage	$V_{CC} = 4.5 \text{ to } 5.5\text{V}$	$I_{OH} = -0.4 \text{ mA}$	$V_{CC} - 2$		V	
		$V_{CC} = \text{Max}$	$I_{OH} = -3 \text{ mA}$	2.4	3.2		
			$I_{OH} = \text{Max}$	2			
V_{OL}	Low Level Output Voltage	$V_{CC} = \text{Min}$	$I_{OL} = 12 \text{ mA}$		0.25	0.4	V
			$I_{OL} = 24 \text{ mA}$		0.35	0.5	
I_I	Input Current at Maximum Input Voltage	$V_{CC} = \text{Max}$	I/O Ports, $V_I = 5.5\text{V}$			100	μA
			Control Inputs, $V_I = 7\text{V}$			100	
I_{IH}	High Level Input Current	$V_{CC} = \text{Max}, V_I = 2.7\text{V}$ (Note 2)				20	μA
I_{IL}	Low Level Input Current	$V_{CC} = \text{Max}, V_I = 0.4\text{V}$ (Note 2)				-100	μA
I_O	Output Drive Current	$V_{CC} = \text{Max}, V_O = 2.25\text{V}$		-30		-112	mA
I_{CC}	Supply Current	$V_{CC} = \text{Max}$	Outputs High		30	45	mA
			Outputs Low		36	55	
			Outputs Disabled		38	58	

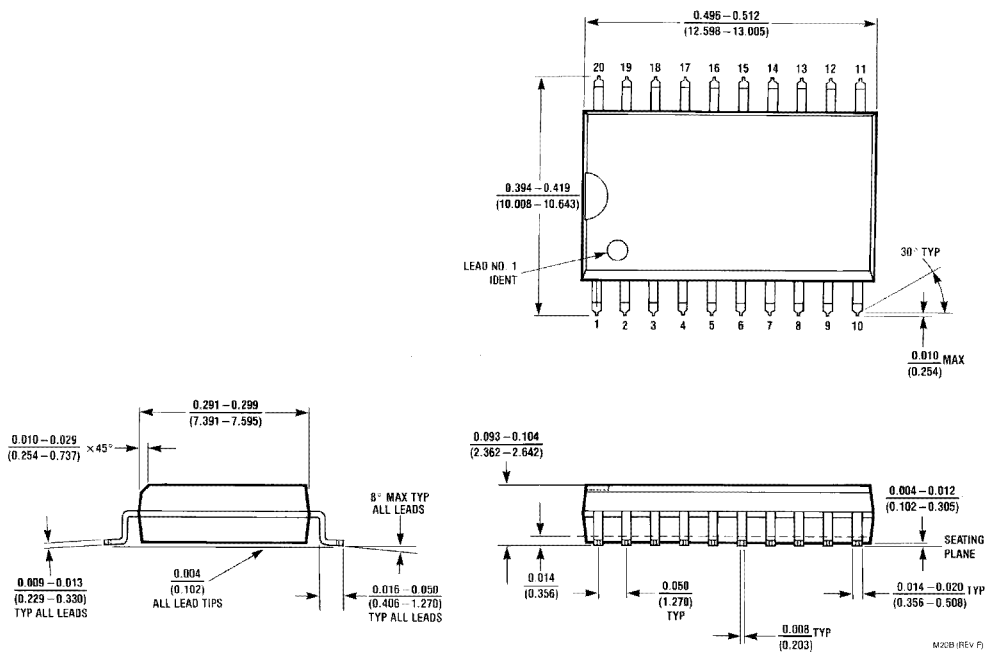
Note 2: For I/O ports, I_{IH} and I_{IL} parameters include the TRI-STATE® output current (I_{OZL} and I_{OZH}).

Switching Characteristics Over Recommended Operating Free Air Temperature Range (Note 1)

Symbol	Parameter	From (Input)	To (Output)	Conditions	DM74ALS645A		Units
					Min	Max	
t _{PLH}	Propagation Delay Time Low to High Level Output	A or B	B or A	V _{CC} = 4.5 to 5.5V, C _L = 50 pF, R1 = R2 = 500Ω	3	10	ns
t _{PHL}	Propagation Delay Time High to Low Level Output	A or B	B or A		3	10	ns
t _{PZH}	Output Enable Time to High Level Output	\bar{G}	A or B		5	20	ns
t _{PZL}	Output Enable Time to Low Level Output	\bar{G}	A or B		5	20	ns
t _{PHZ}	Output Disable Time from High Level Output	\bar{G}	A or B		2	10	ns
t _{PLZ}	Output Disable Time from Low Level Output	\bar{G}	A or B		4	15	ns

Note 1: See Section 5 for test waveforms and output load.

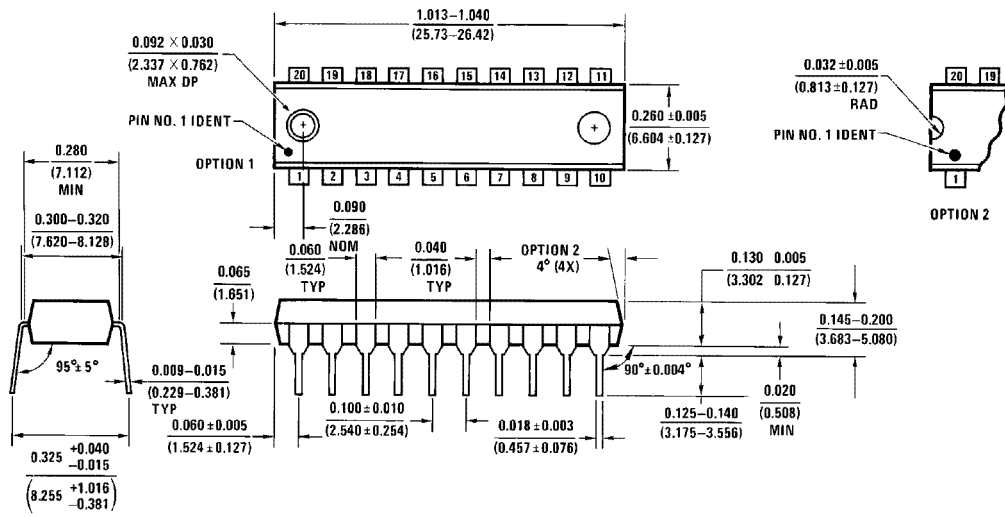
Physical Dimensions inches (millimeters)



SO Package (M)
Order Number DM74ALS645AWM
NS Package Number M20B

Physical Dimensions inches (millimeters) (Continued)

Lit. # 102564



Molded Dual-In-Line Package (N)
Order Number DM74ALS645AN
NS Package Number N20A

LIFE SUPPORT POLICY

NATIONAL'S PRODUCTS ARE NOT AUTHORIZED FOR USE AS CRITICAL COMPONENTS IN LIFE SUPPORT DEVICES OR SYSTEMS WITHOUT THE EXPRESS WRITTEN APPROVAL OF THE PRESIDENT OF NATIONAL SEMICONDUCTOR CORPORATION. As used herein:

1. Life support devices or systems are devices or systems which, (a) are intended for surgical implant into the body, or (b) support or sustain life, and whose failure to perform, when properly used in accordance with instructions for use provided in the labeling, can be reasonably expected to result in a significant injury to the user.
2. A critical component is any component of a life support device or system whose failure to perform can be reasonably expected to cause the failure of the life support device or system, or to affect its safety or effectiveness.



National Semiconductor Corporation
 1111 West Bardin Road
 Arlington, TX 76017
 Tel: 1(800) 272-9959
 Fax: 1(800) 737-7018

National Semiconductor Europe
 Fax: (+49) 0-180-530 85 86
 Email: cnjwge@tevm2.nsc.com
 Deutsch Tel: (+49) 0-180-530 85 85
 English Tel: (+49) 0-180-532 78 32
 Français Tel: (+49) 0-180-532 93 58
 Italiano Tel: (+49) 0-180-534 16 80

National Semiconductor Hong Kong Ltd.
 13th Floor, Straight Block,
 Ocean Centre, 5 Canton Rd.
 Tsimshatsui, Kowloon
 Hong Kong
 Tel: (852) 2737-1600
 Fax: (852) 2736-9960

National Semiconductor Japan Ltd.
 Tel: 81-043-299-2309
 Fax: 81-043-299-2408

National does not assume any responsibility for use of any circuitry described, no circuit patent licenses are implied and National reserves the right at any time without notice to change said circuitry and specifications.