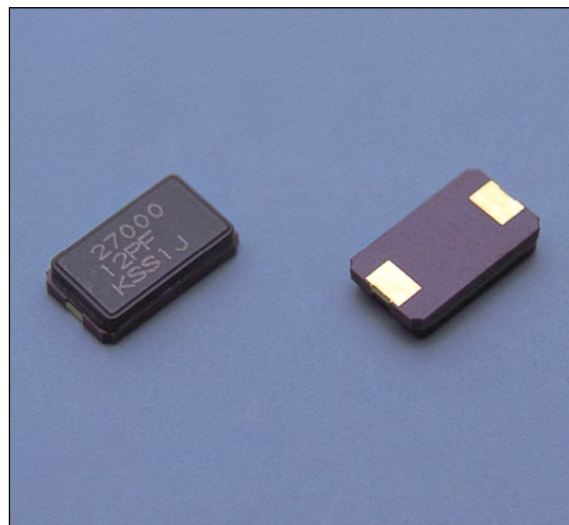


CX-8045G (CX-11F)

SMD

■Features

- Compact, thin. (8.0×4.5×1.8mm)
- For self-loading.
- Ceramic package leadless type.
- Emboss tapping.
- Reflow soldering.
- The oscillation circuit can obtain sufficient output at the inverter stage.



■Specifications

Type	CX-8045G
Frequency Range	8~70MHz
Standard Frequency	Table 1
Overtone Order	8~47MHz : Fundamental 40~70MHz : 3rd. O.T.
Operating Temp. Range	-10~+70°C
Storage Temp. Range	-40~+85°C
Frequency Tolerance	at 25°C
	Over The Oper. Temp. Range
	$\pm 15, \pm 30, \pm 50 \times 10^{-6}$ $\pm 15, \pm 30, \pm 50 \times 10^{-6}$ (referred to 25°C)
Load Capacitance	12pF
Equivalent Series Resistance	8~10MHz (Fund.) 200Ω MAX. 10~12MHz (Fund.) 150Ω MAX. 12~47MHz (Fund.) 50Ω MAX. 40~70MHz (3rd.) 150Ω MAX.
Shunt Capacitance	7pF MAX.
Drive Level	8~16MHz:0.5mW MAX. 16~24MHz:0.3mW MAX. 24~47MHz:0.1mW MAX. 3rd. O.T. :0.3mW MAX.
Shock	Three drops onto a hard wood board from the height of 20cm
Vibration	10~55Hz, amplitude 1.5mm, each to 3 directions, 2 hours each

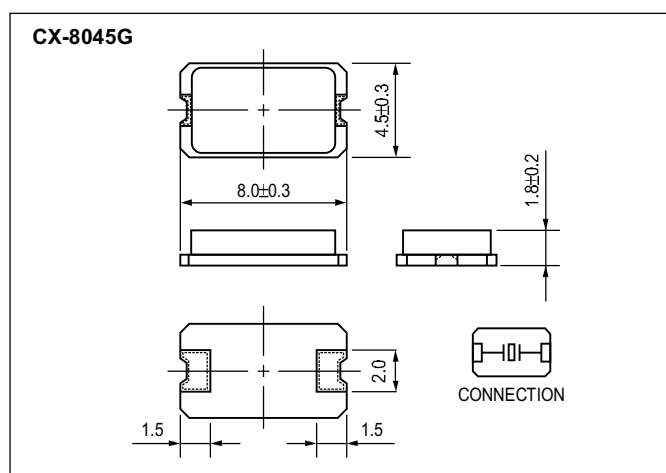
*Taping item packaging : one unit 1,000pcs & 3,000pcs

■Table 1
Standard Frequencies

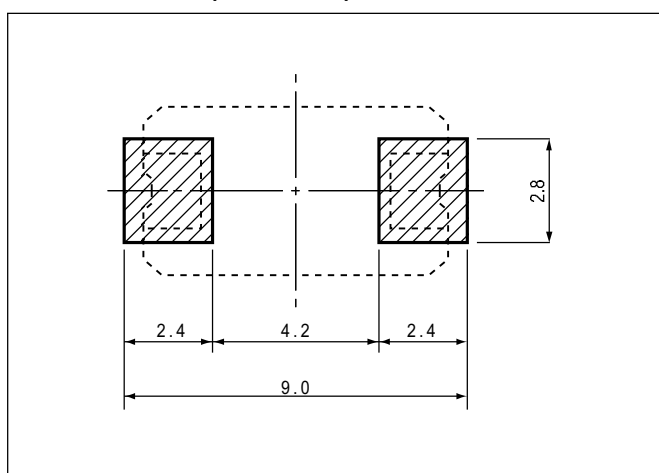
Standard Frequency (MHz)	
14.31818	27.000
16.000	28.63636
16.384	30.000
16.9344	32.000
19.6608	33.8688
20.000	36.000
21.47727	40.000
24.000	45.1584
24.576	

* Please inquire about frequencies other than the above.

■Outline



■Land Pattern(reference)



Dimensions(mm)