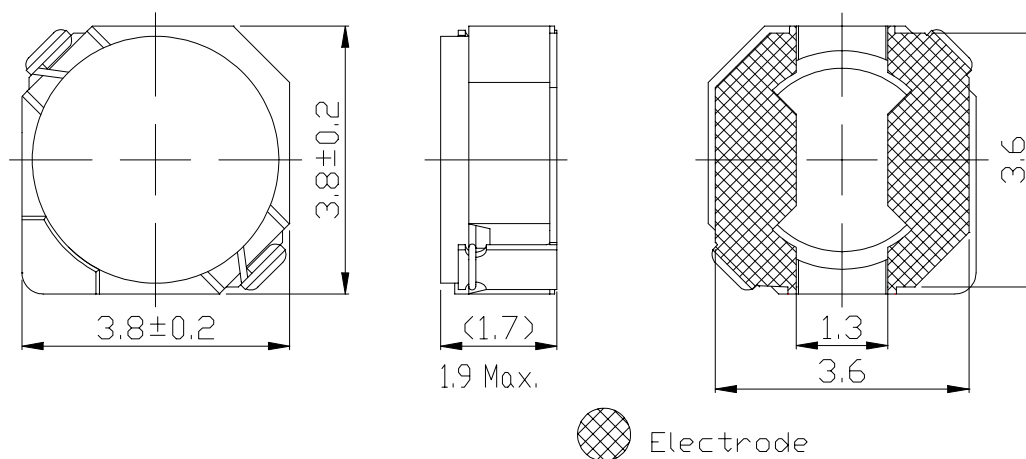
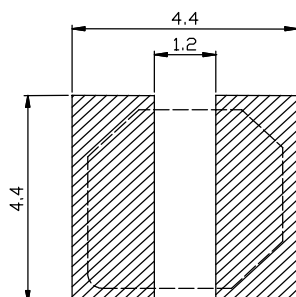


Type: CDRH3D17/S
◆ Product Description

- $4.0 \times 4.0\text{mm}$ Max.(L \times W), 1.90mm Max.Height.
- Inductance range: $1.7 \sim 22 \mu\text{H}$.
- Rated current range: 0.5 \sim 2.0A.
- In addition to the standards versions shown here, custom inductors are also available to meet your exact requirements.

◆ Feature

- Magnetically shielded construction.
- Ideally used in Mobilephone, PDA, MP3, DSC/DVC, etc as DC-DC Converter inductors.
- RoHS Compliance.

◆ Dimensions (mm)

◆ Land Pattern (mm)


Type: CDRH3D17/S
◆ Specification

Part Name ※	Stamp	Inductance (μ H) [Within] 100kHz/1V	D.C.R.(m Ω) Max.(Typ.) (at 20°C)	Saturation Current (A) ※1		Temperature Rise current (A) ※2
				(at 20°C)	(at 100°C)	
CDRH3D17/SNP-1R7N□	A	1.7 \pm 30%	50(41)	2.0	1.6	2.4
CDRH3D17/SNP-2R2N□	C	2.2 \pm 30%	60(47)	1.8	1.3	2.3
CDRH3D17/SNP-3R3N□	E	3.3 \pm 30%	85(68)	1.4	1.1	1.8
CDRH3D17/SNP-4R7N□	G	4.7 \pm 30%	115(93)	1.2	0.9	1.5
CDRH3D17/SNP-6R3N□	J	6.3 \pm 30%	180 (145)	1.0	0.7	1.1
CDRH3D17/SNP-10 \emptyset N□	K	10 \pm 30%	230 (185)	0.8	0.6	1.0
CDRH3D17/SNP-15 \emptyset N□	M	15 \pm 30%	410 (328)	0.7	0.5	0.8
CDRH3D17/SNP-22 \emptyset N□	P	22 \pm 30%	610 (488)	0.6	0.4	0.5

※ Description of Part Name

CDRH3D17/SNP-1R7N□

— B Box
 — C Carrier Tape

※1.Saturation Current: The DC current at which the inductance decreases to 65% of it's nominal value

 ※2 Temperature rise current:The DC current at which the temperature rise is $\Delta t=40^{\circ}\text{C}$.(Ta=20°C)