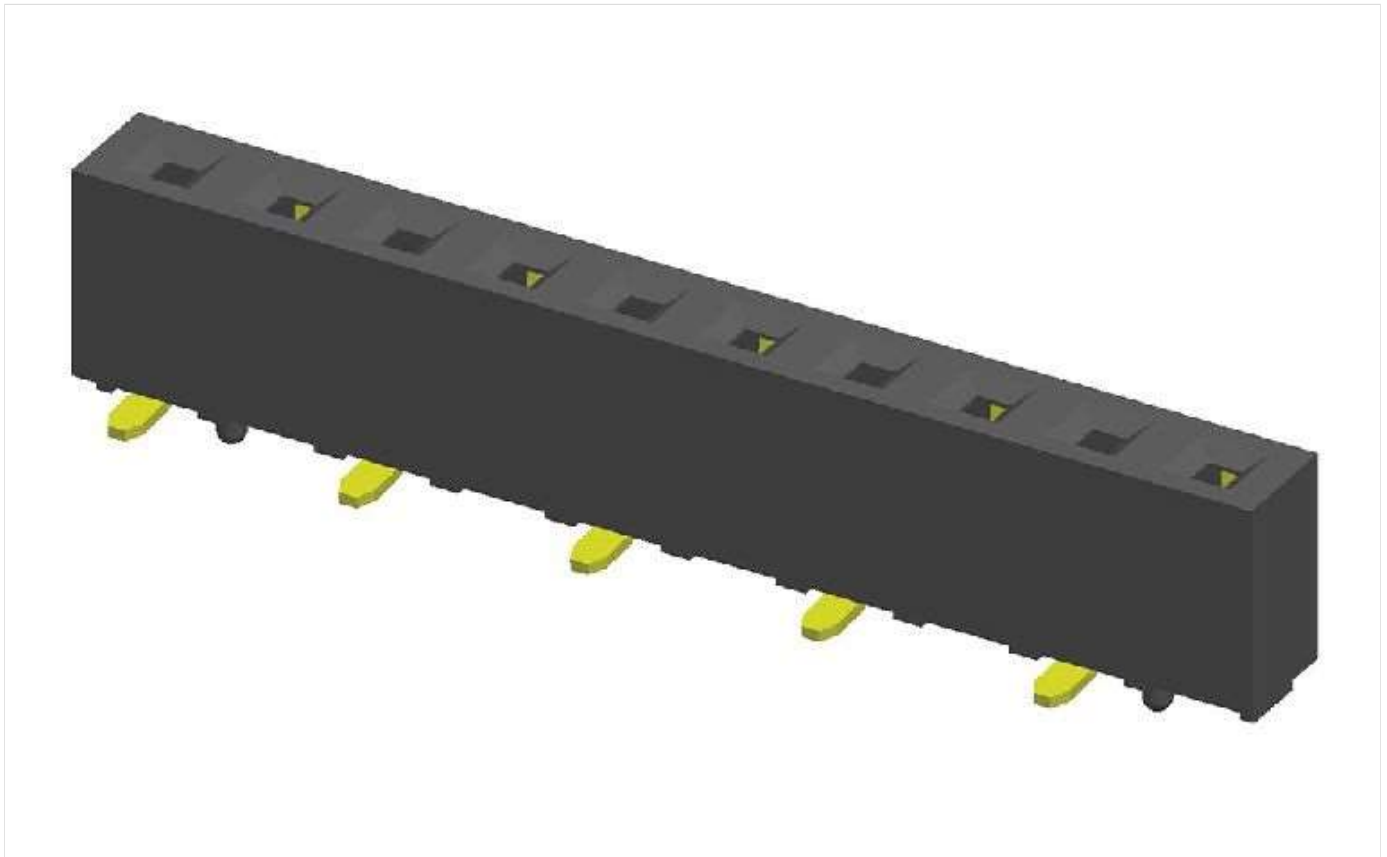


## Product Picture



(/upload/products\_en/192\_1.jpg)

**!** You may also be interested in :

- Female header
- 2.54 mm / 0.10"
- Single row
- S.M.T.

- Inquires
- Samples
- Mating Connectors
- Solutionator

## Female header / CSHC129

Product status : Active

Product highlight : Pitch : 2.54 mm / 0.10" | Number of row : Single row | Mount type : S.M.T. | Locating peg : With

### Product Detail

Specifications :

Current Rating: 3.0 Ampere

Insulation Resistance: 1000 MΩ Min

Dielectric Withstanding: 600V AC

Contact Resistance: 20 mΩ Max

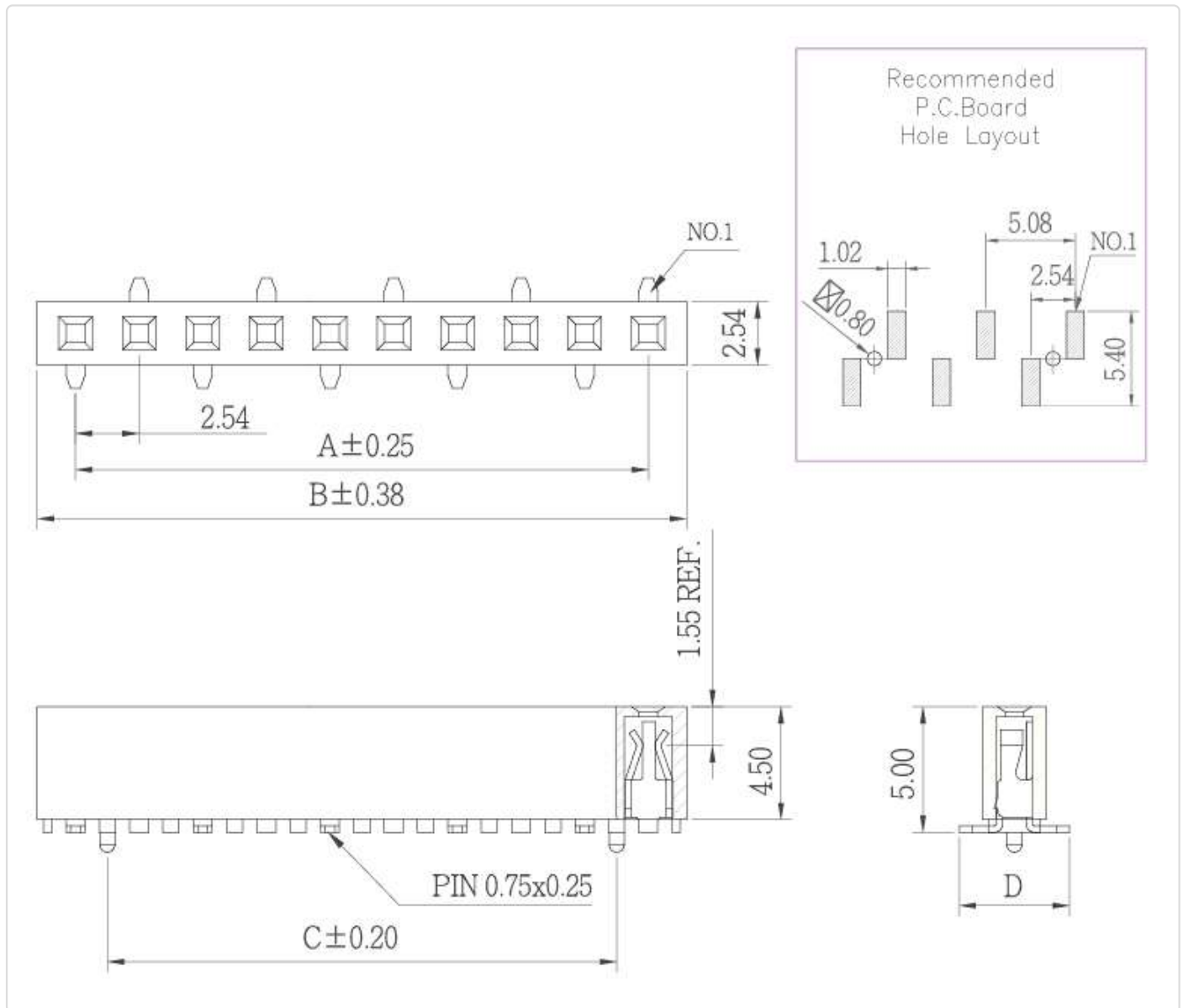
Operating Temperature: -40°C to +105°C

Materials :

Contact Material: Phosphor Bronze

Insulation Material: High Temperature Thermoplastic, 94V-0 Nylon





2D drawing :






(/upload/products2d\_en/192\_1.jpg)

No. of Pins per Row :

No. of	Dimension Information

 Pins/Row Greenconn (/)	A	B	 
03	5.08	8.12	2.54
04	7.62	10.66	5.08
05	10.16	13.20	7.62 
06	12.70	15.74	10.16
07	15.24	18.28	12.70
08	17.78	20.82	15.24
09	20.32	23.36	17.78
10	22.86	25.90	20.32
11	25.40	28.44	22.86
12	27.94	30.98	25.40
13	30.48	33.52	27.94
14	33.02	36.06	30.48
15	35.56	38.60	33.02
16	38.10	41.14	35.56
17	40.64	43.68	38.10
18	43.18	46.22	40.64
19	45.72	48.76	43.18
20	48.26	51.30	45.72
21	50.80	53.84	48.26
22	53.34	56.38	50.80
23	55.88	58.92	53.34
24	58.42	61.46	55.88
25	60.96	64.00	58.42
26	63.50	66.54	60.96
27	66.04	69.08	63.50
28	68.58	71.62	66.04
29	71.12	74.16	68.58
30	73.66	76.70	71.12
31	76.20	79.24	73.66
32	78.74	81.78	76.20
33	81.28	84.32	78.74
34	83.82	86.86	81.28
35	86.36	89.40	83.82
36	88.90	91.94	86.36
37	91.44	94.48	88.90
38	93.98	97.02	91.44
39	96.52	99.56	93.98

 40 ( / )	99.06	102.10	96.52	 
---	-------	--------	-------	---

Ordering information :

Standard Plating

02 : Gold Flash



Selective Plating

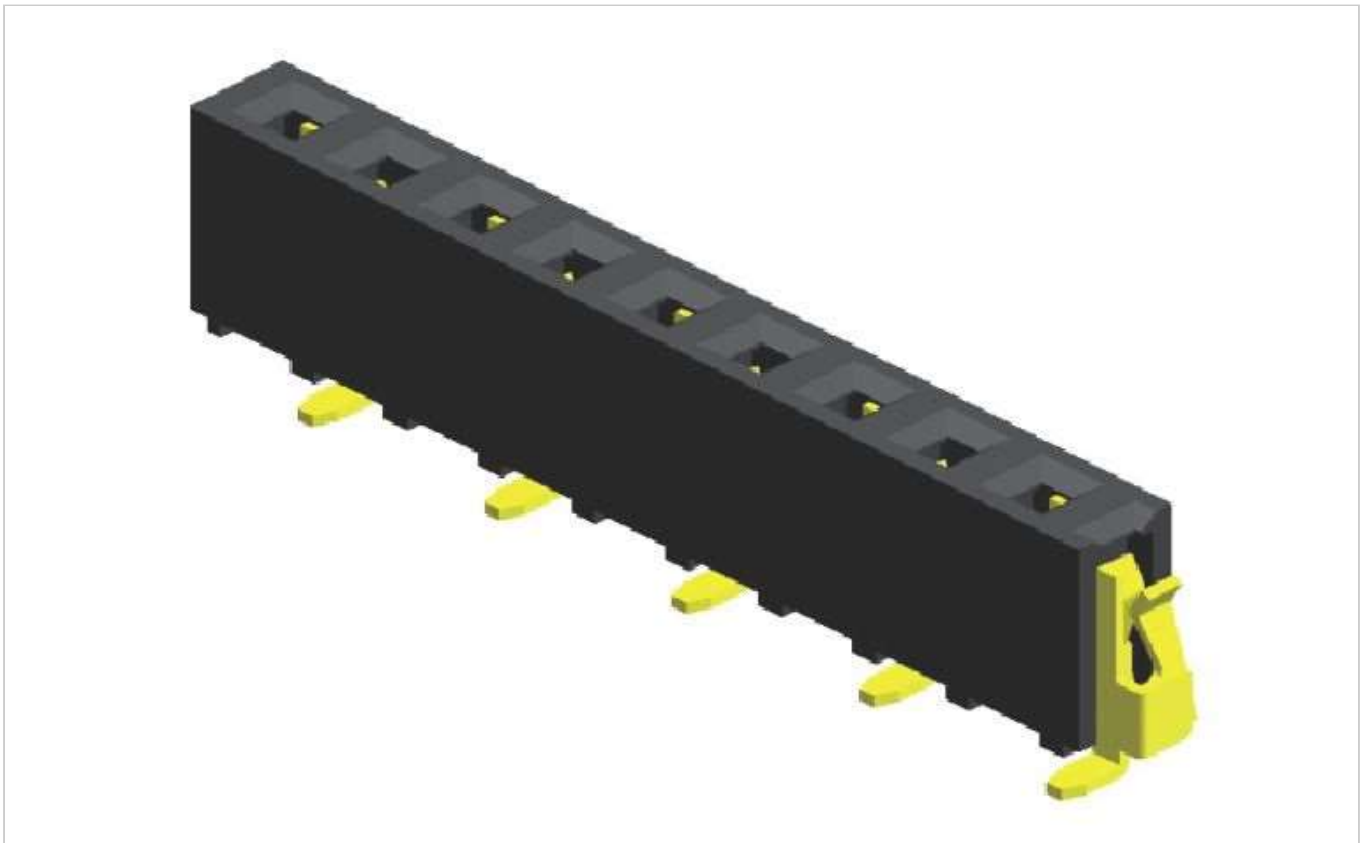
01 : Tin

05 : Gold Flash/Tin

Standard Packaging : Tube

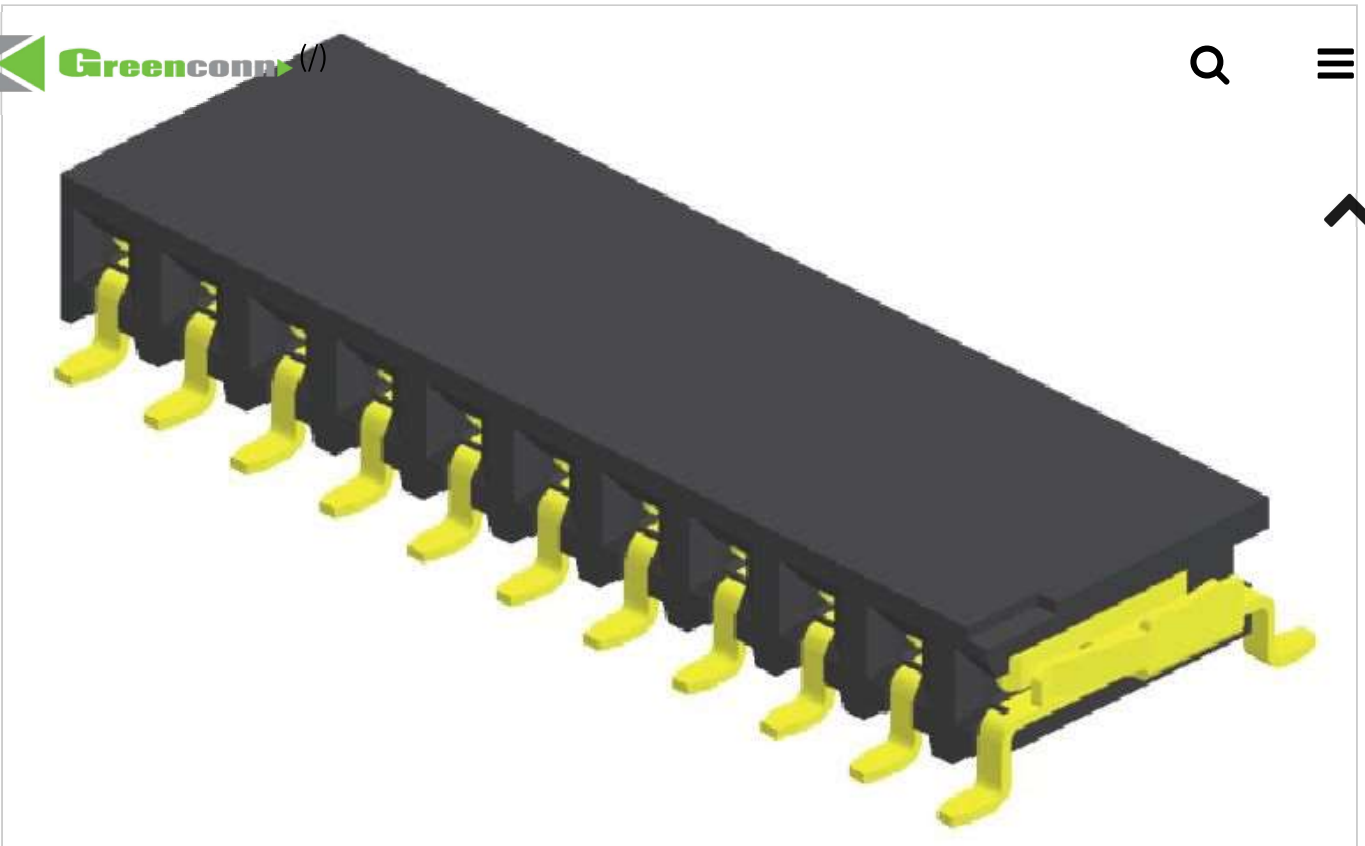
Similar products

[Comparison](#)



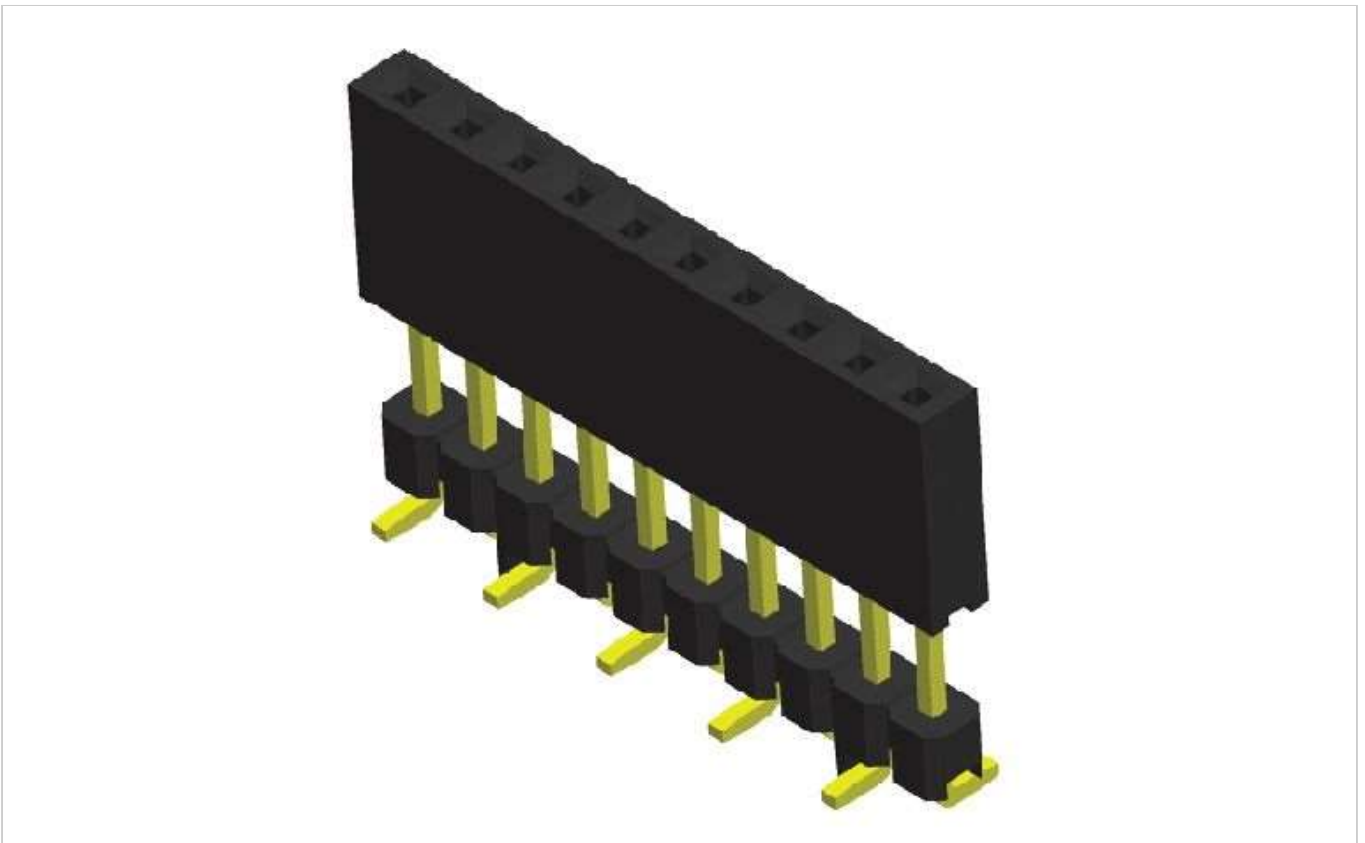
(product\_page?id=189&similar=208,209,224,190,189,191,192,210)

CSHC121 (product\_page?id=189&similar=208,209,224,190,189,191,192,210)



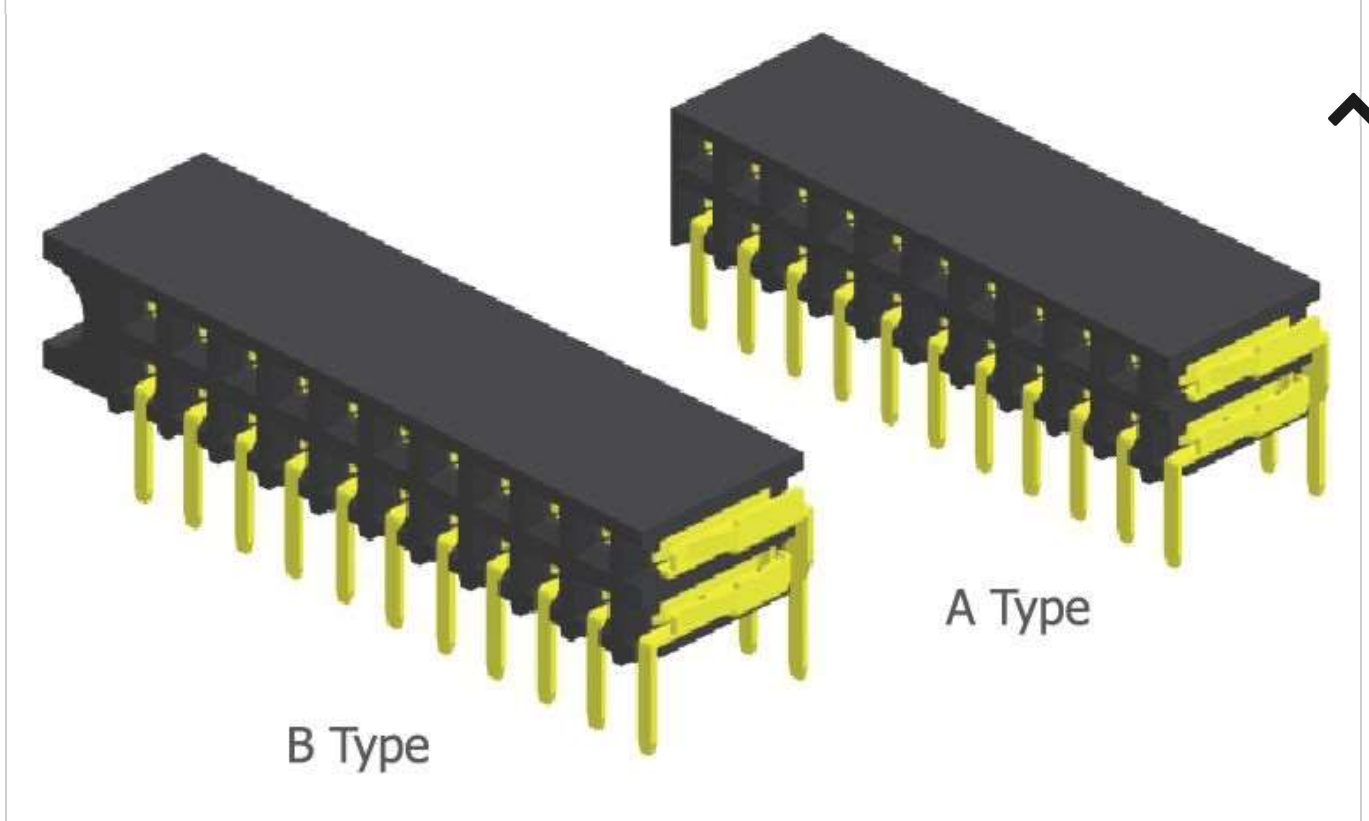
(product\_page?id=190&similar=208,209,224,190,189,191,192,210)

CSHC110 (product\_page?id=190&similar=208,209,224,190,189,191,192,210)



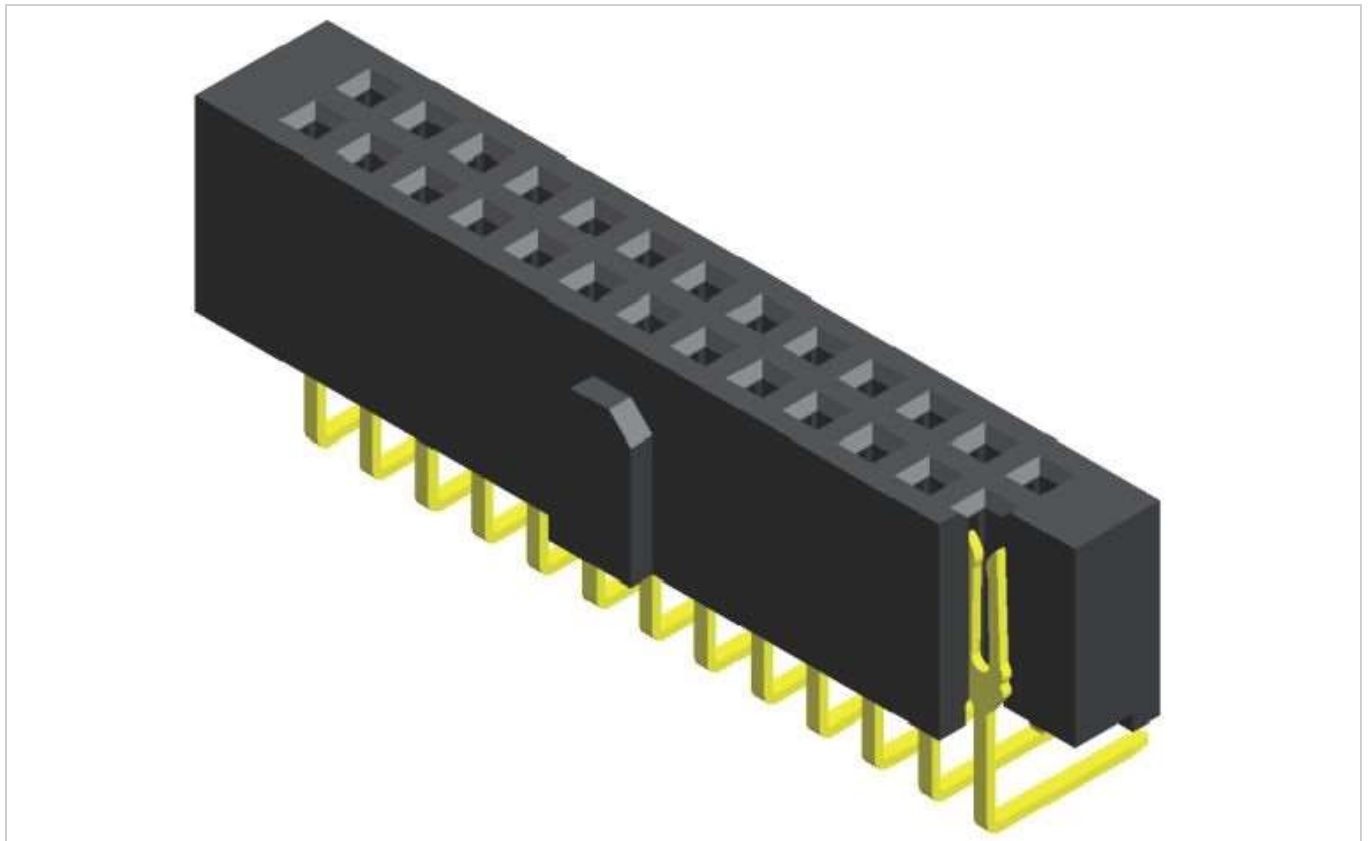
(product\_page?id=191&similar=208,209,224,190,189,191,192,210)

CSHC125 (product\_page?id=191&similar=208,209,224,190,189,191,192,210)

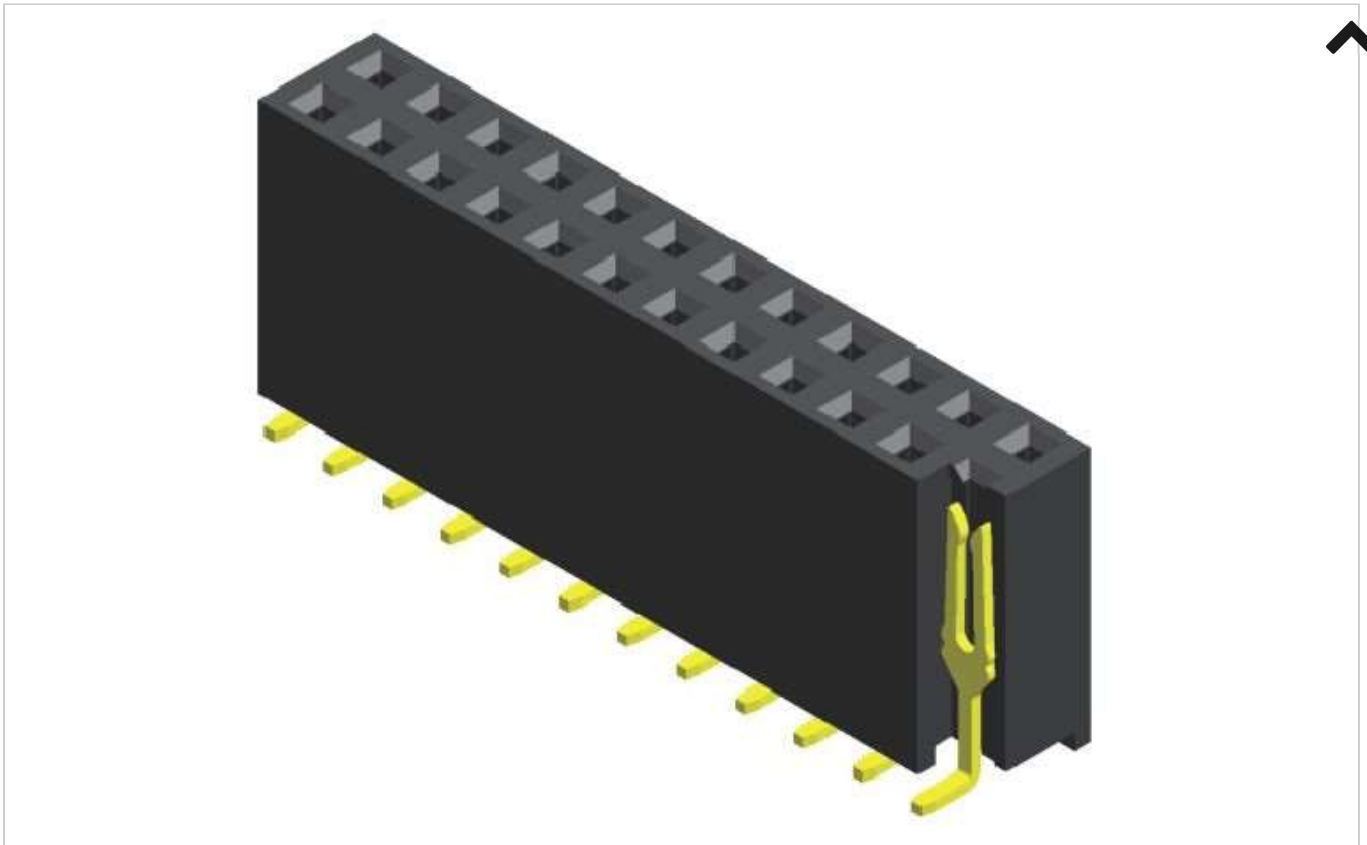


(product\_page?id=208&similar=208,209,224,190,189,191,192,210)

CSHB210 (product\_page?id=208&similar=208,209,224,190,189,191,192,210)

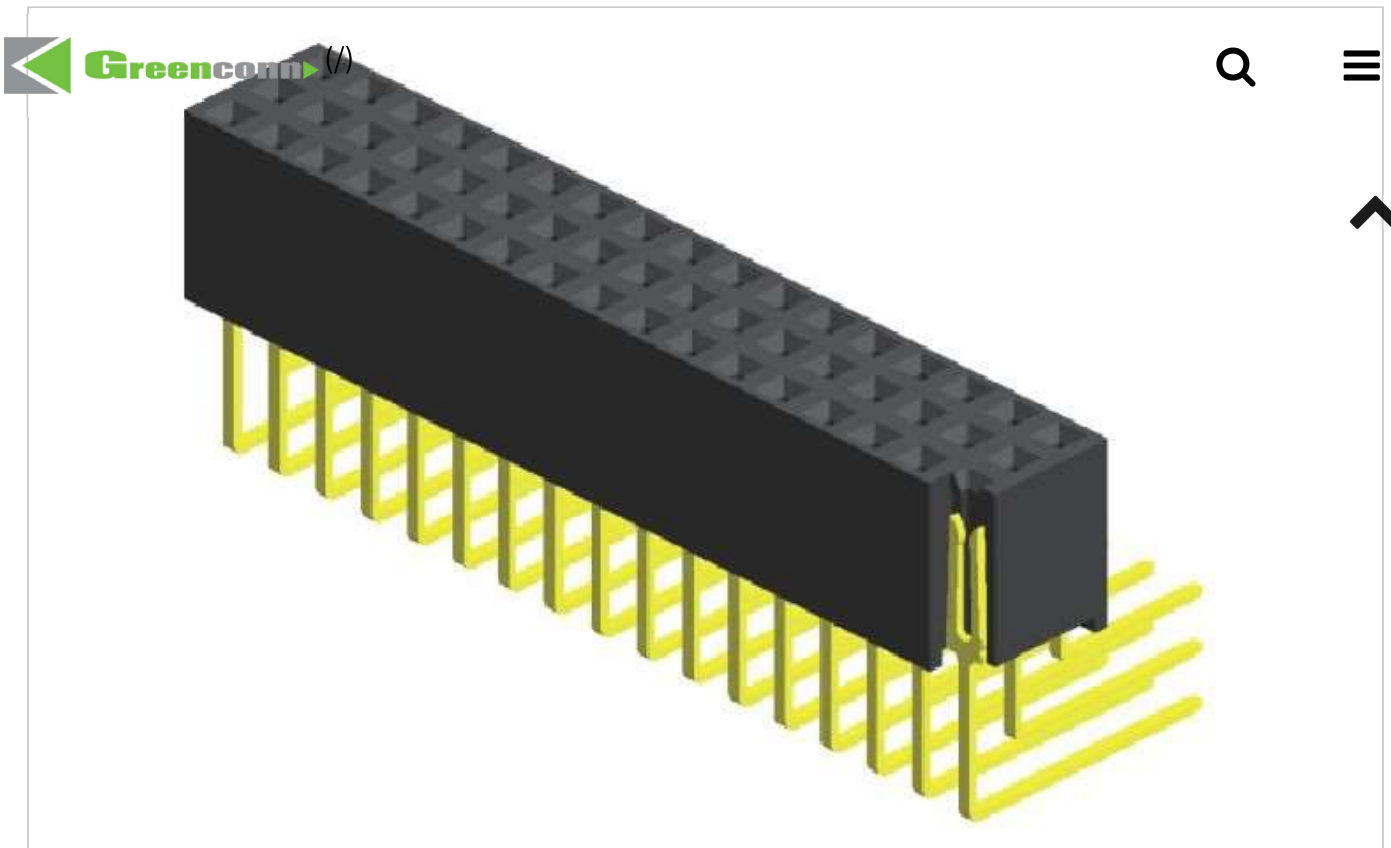


(product\_page?id=209&similar=208,209,224,190,189,191,192,210)



[\(product\\_page?id=210&similar=208,209,224,190,189,191,192,210\)](#)

[CSHC203 \(product\\_page?id=210&similar=208,209,224,190,189,191,192,210\)](#)



(product\_page?id=224&similar=208,209,224,190,189,191,192,210)

CSHB301 (product\_page?id=224&similar=208,209,224,190,189,191,192,210)

## GREENCONN SHENZHEN

📍 No. 22 Jingshan Road, Luotian Third Industrial Zone, Yanluo Street, Baoan District, Shenzhen City, Guangdong Province, China

☎ + 86-755-2707-0050/1

📠 + 86-755-2707-0056

✉ sales@greenconn.com (/customPage\_page?id=11)

## GREENCONN TAIWAN

📍 5F, No.657-3, Zhongzheng Road, Xinzhuang District, New Taipei City 242, Taiwan

☎ + 886-2-2209-1343

📠 + 886-2-2903-0754

✉ sales@greenconn.com (/customPage\_page?id=11)

## QUICK LINKS



Home (index\_page)

Information (news\_list)

Contact us (customPage\_page?id=11)

Document Center (document\_list)

Products (productType\_list)

Company profile (customPage\_page?id=2)

Site Map (sitemaps\_list)

Sample (sample\_list)



Copyright © GREENCONN Corporation. All rights reserved.

 (<https://tw.linkedin.com/company/greenconn>)