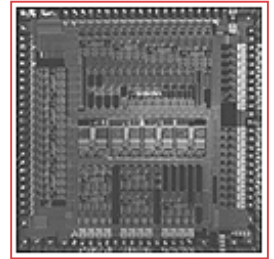




BCM5226 PRODUCT Brief



10/100BASE-TX/FX HEX-Φ™ TRANSCEIVER

BCM5226 FEATURES

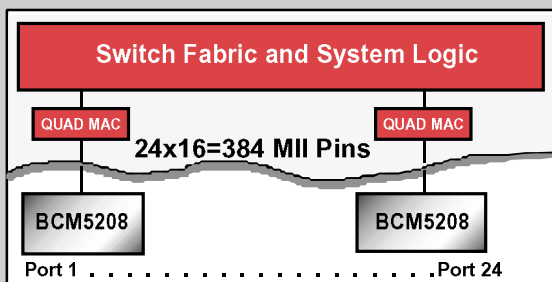
- Single-chip six-port Fast Ethernet transceiver
- HP auto-MDIX
- Low-power 2.5V CMOS technology
- Compatible with 2.5V I/O and 3.3V I/O
- Reduced Media Independent Interface (RMII)
- Serial Media Independent Interface (SMII)
- Fully integrated digital adaptive equalization
- On-chip multimode transmit waveshaping
- Edge-rate control eliminates external filters
- Integrated baseline wander correction
- Full-duplex support
- Twisted-pair or fiber support on any or all ports
- Interrupt output capability
- Loopback mode for diagnostics
- 160-pin PQFP (BCM5226R)
- 128-pin PQFP (BCM5226S)
- Proven Broadcom proprietary DSP Digi-Φ™ architecture

SUMMARY OF BENEFITS

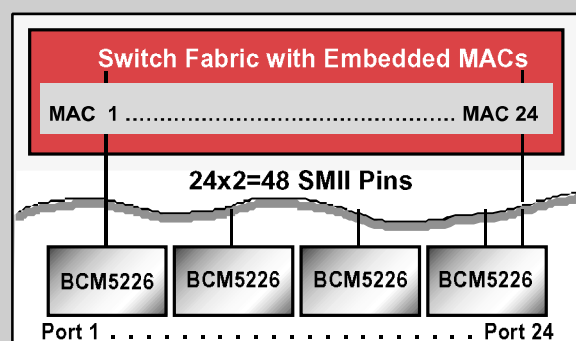
- Target usage: Fast Ethernet switches
- Lowest per port power solution available: < 300 milliwatts per port
- Smallest footprint per port available
- Auto-MDIX detects and corrects cabling errors
- Provides robust performance over a broad range of operating conditions
- Single-chip device contains 6 independent Fast Ethernet transceivers
- Performs all physical layer interface functions for 100BASE-TX full-duplex or half-duplex Ethernet on Category 5 twisted-pair cable and 10BASE-T full- or half-duplex Ethernet on Category 3, 4, or 5 cable
- Will permit transmission over fiber-optic cabling when paired with an external fiber-optic transceiver
- Compliant with IEEE 802.3 standard
- IEEE 1149.1 (JTAG) scan chain support

Quad BCM5208 Versus HEX BCM5226 Comparison

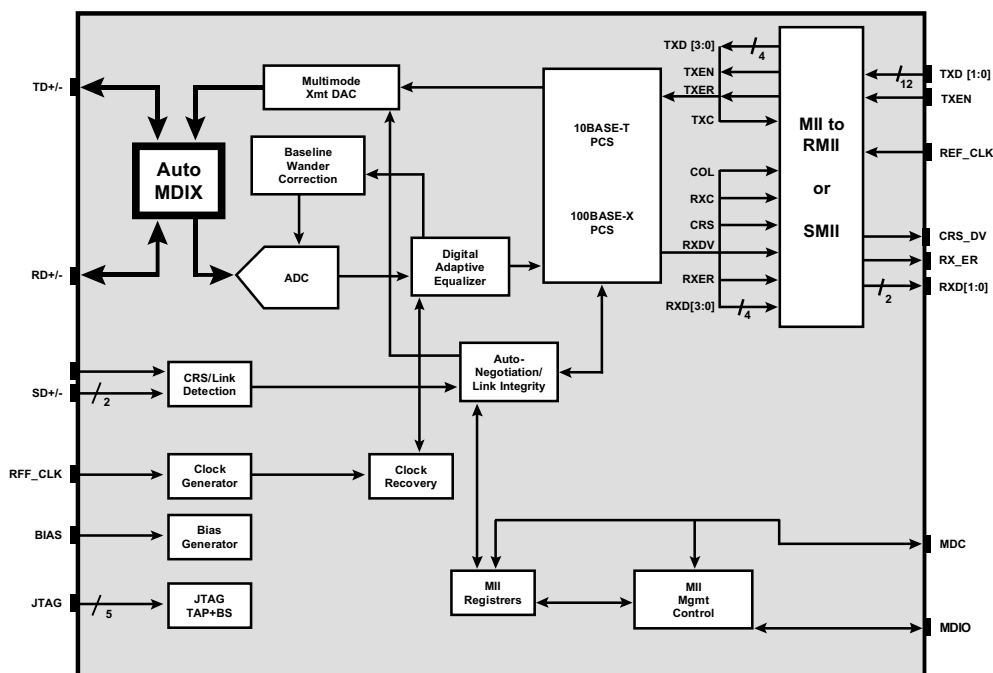
1997: 6 Active PHY Components + 6 MACs including Switch Fabric



1999: 4 Active SMII PHY Components + SMII MACs embedded in Switch Chip



BCM5226 OVERVIEW



The Broadcom® **BCM5226** is a single-chip device containing six independent Fast Ethernet transceivers. Each performs all the physical layer interface functions for 100BASE-TX full-duplex or half-duplex Ethernet on Category 5 twisted-pair cable and 10BASE-T full or half-duplex Ethernet on Category 3, 4 or 5 cable. Each port may also be configured for 100BASE-FX full or half-duplex transmission over fiber-optic cabling when paired with an external fiber-optic line transceiver.

The **BCM5226** chip performs 4B5B, MLT3, NRZI, and Manchester encoding and decoding, clock and data recovery, stream cipher scrambling/descrambling, digital adaptive equalization, line transmission, carrier sense and link integrity monitoring, auto-negotiation and RMI management functions.

The **BCM5226** can be connected to a switch controller through the RMI on one side and connects directly to the network media on the other side through isolation transformers for UTP modes or fiber-optic transceiver components for FX mode. The **BCM5226** is compliant with the IEEE 802.3 standard.

The **BCM5226** operates from a 2.5V power supply, which dramatically lowers total power consumption compared to 3.3V and 5V designs. The **BCM5226** I/O operates at either 2.5V or 3.3V, for compatibility with 3.3V designs.

The **BCM5226** is the first 10/100 Ethernet transceiver to incorporate the Hewlett-Packard Auto-Media Dependent Interface Crossover (Auto-MDIX) feature. Originally specified in the IEEE 802.3ab Gigabit Ethernet standard for Category 5 cable, the Auto-MDIX feature enables the transceiver to automatically detect and correct a crossed cable. This allows system installation and maintenance personnel to use crossover or straight-through cables interchangeably, regardless of whether the cable is attached to another switch, NIC or repeater. This capability eliminates incorrect connections due to cable mismatch, making it easier and less expensive to install and operate 10/100 Ethernet switches.

The **BCM5226R** supports RMI, and is available in a 160-pin plastic quad flatpack package (PQFP); the **BCM5226R** supports SMII, and is available in a 128-pin PQFP.

Broadcom® and the pulse logo are registered trademarks of Broadcom Corporation.
 HEX-Φ is a trademark of the Broadcom Corporation.
 Digi-Φ is a trademark of the Broadcom Corporation.

For more information please contact us at:
Phone: 949-450-8700, FAX: 949-450-8710
Email: info@broadcom.com

Visit our web site at: www.broadcom.com

© 2001 BROADCOM CORPORATION
 5226-PB01-R-4.23.01



BROADCOM CORPORATION
 16215 Alton Parkway, P.O. Box 57013
 Irvine, California 92619-7013