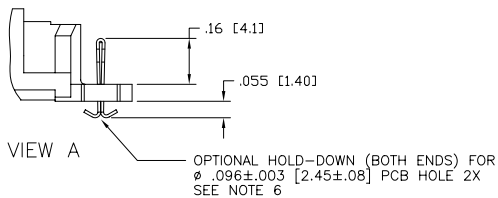
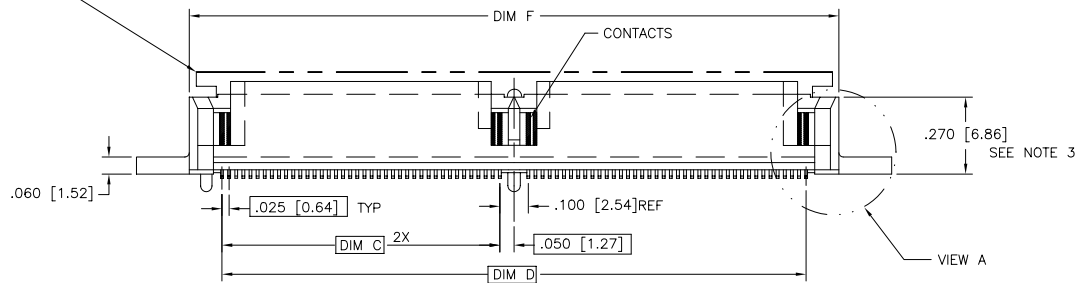
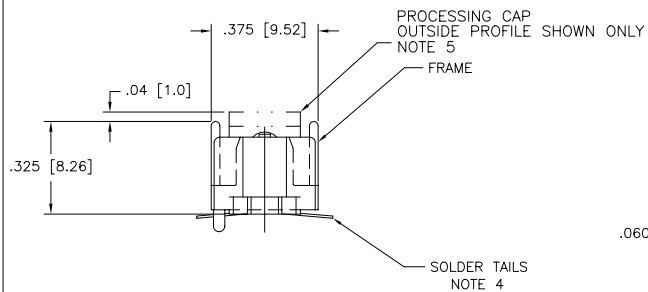
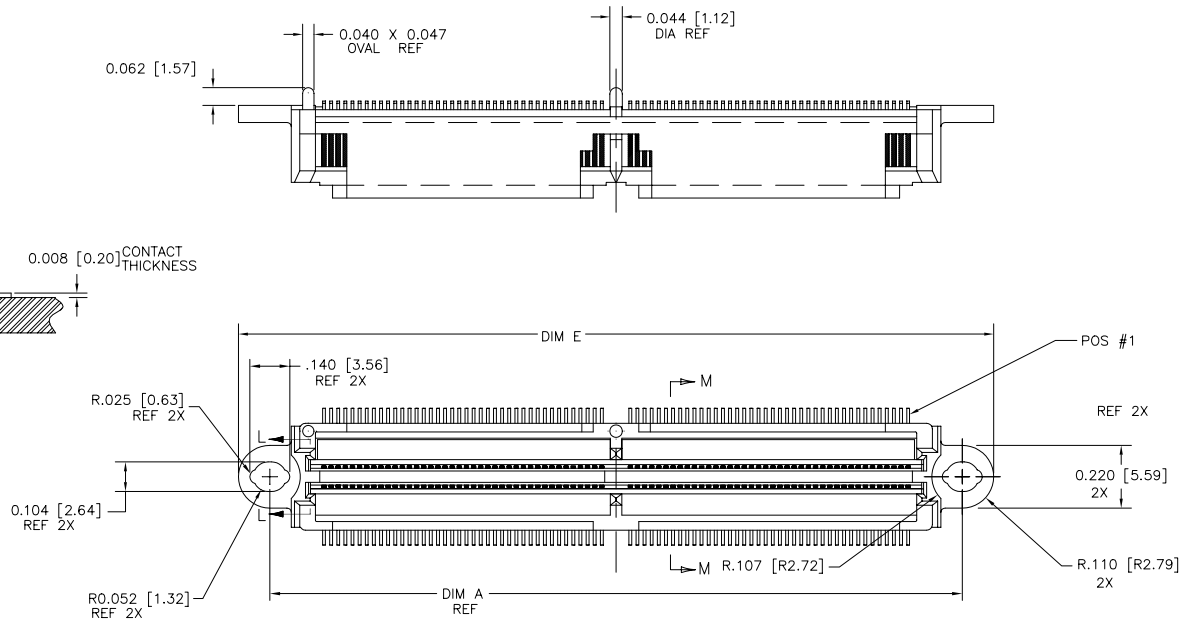
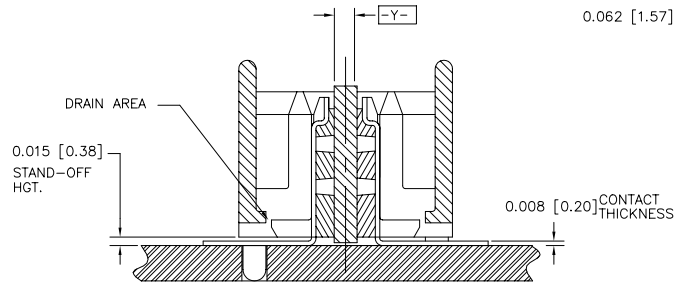




FCIconnect.com

Copyright FCI

PRODUCT NUMBER  
SEE TABLE



mat'l. code				surface		tolerance	projection	product family		
-				ISO 1302		ISO 406 ISO 1101		MICROPAX		
				tolerances unless otherwise specified				title		
ltr	ecn	no	dr	date	angles	linear		MICROPAX .025M SMT		
G	V50646	MRC	6/23/95					PLUG DOUBLE MODULE		
H	V51287	MRC	10/20/95							
J	E70095	SAR	7/22/97	0°±2'						
K	V01503	CGD	6/12/00	dr	T. HOUTZ	3/04/93		dwg no		
L	V12115	CRG	8/17/01	enr	M. HAHN	3/04/93		sheet 1 of 3 size		
M	M05-0082	MHT	5/06/05	chr	M. HAHN	3/04/93		91294 A3		
N	M06-0279	AEA	7/22/06	appd	M. HAHN	3/04/93		type Product Customer Drawing		
sheet	revision	N	N	N						
index	sheet	1	2	3						

form: A3

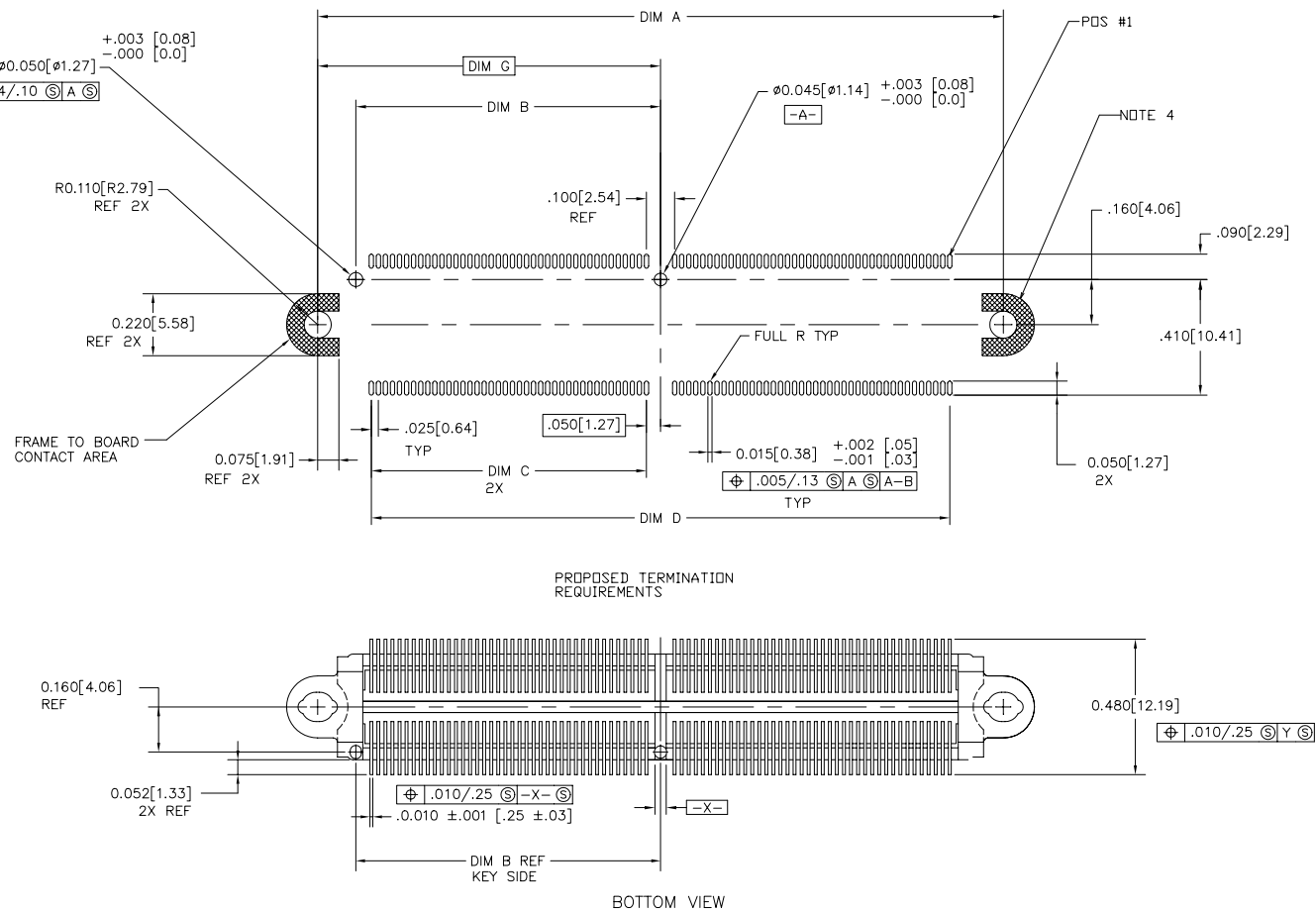


FCIconnect.com

Copyright FCI

PRODUCT NUMBER

SEE TABLE



mat'l. code				surface	tolerance	projection	product family	
-				ISO 1302	ISO 406		MICROPAX	
				ISO 1101	ISO 1101			
ltr	ecr	no	dr	date	tolerances unless otherwise specified	INCH/MM	title	
N					linear		MICROPAX .025M SMT	
					0°±2'	scale 1:1	PLUG DOUBLE MODULE	
					dr		dwg no	
					enr		91294	
					chr		sheet 2 of 3 size	
					appd		A3	
sheet	revision						type	
index	sheet						Product Customer Drawing	

form: A3

PDM: Rev:N

STATUS Released

Printed: Jul 22, 2010

PRODUCT	NO. OF CONTACTS	DIM A	DIM B	DIM C	DIM D	DIM E	DIM F	DIM G	CONTACT PLATING NOTE 2	HOLD-DOWN	PROCESSING CAP
91294-001	120	1.930/50.95	.830/21.08	.725/18.42	1.550/39.37	2.150/54.61	1.790/45.47	.965/24.51	30 GXT	OPTIONAL SEE NOTE 6	CAPS INSTALLED ON CONNECTOR
-002	160	2.430/61.72	1.080/.27.43	.975/24.76	2.050/52.07	2.650/67.31	2.290/58.16	1.215/30.86	30 GXT		
-003	200	2.930/74.42	1.330/33.78	1.225/31.12	2.550/64.77	3.150/80.01	2.790/70.87	1.465/37.21	30 GXT		
-033	200	2.930/74.42	1.330/33.78	1.225/31.12	2.550/64.77	3.150/80.01	2.790/70.87	1.465/37.21	30 GXT		NOT SHIPPED ON CONNECTOR
91294-413	200	2.930/74.42	1.330/33.78	1.225/31.12	2.550/64.77	3.150/80.01	2.790/70.87	1.465/37.21	60 GXT		CAPS SUPPLIED LOOSE PIECE

LEAD FREE OPTION;

91294-001LF	120	1.930/50.95	.830/21.08	.725/18.42	1.550/39.37	2.150/54.61	1.790/45.47	.965/24.51	30 GXT	OPTIONAL SEE NOTE 6	CAPS INSTALLED ON CONNECTOR
-002LF	160	2.430/61.72	1.080/.27.43	.975/24.76	2.050/52.07	2.650/67.31	2.290/58.16	1.215/30.86	30 GXT		
-003LF	200	2.930/74.42	1.330/33.78	1.225/31.12	2.550/64.77	3.150/80.01	2.790/70.87	1.465/37.21	30 GXT		
-033LF	200	2.930/74.42	1.330/33.78	1.225/31.12	2.550/64.77	3.150/80.01	2.790/70.87	1.465/37.21	30 GXT		NOT SHIPPED ON CONNECTOR
91294-413LF	200	2.930/74.42	1.330/33.78	1.225/31.12	2.550/64.77	3.150/80.01	2.790/70.87	1.465/37.21	60 GXT		CAPS SUPPLIED LOOSE PIECE

NOTES:

① MATERIALS:

DIELECTRIC: LCP  
CONTACTS: PHOS BRONZE  
FRAME: ZINC ALLOY #3

② PLATING:

SOLDER TAILS: 150 u"/3.81um Sn Pb  
FRAME: 100u "/2.54um NICKEL  
CONTACTS: 30u"/.76um GXT OVER 50u"/1.27um Ni  
OR 60u"/1.52um GXT OVER 75u"/1.90um Ni.

LEAD FREE OPTION:

SOLDER TAILS: 150 u"/3.81um Sn  
FRAME: 100u "/2.54um NICKEL  
CONTACTS: 30u"/.76um GXT OVER 50u"/1.27um Ni  
OR 60u"/1.52um GXT OVER 75u"/1.90um Ni.

③ WHEN CONNECTOR IS MATED WITH OPPOSITE HALF, THE PARALLEL BD. TO BD. HGT. IS .47 ±.01. (APPLYS TO VERT. THRU & SURFACE MT. STYLES)

④ THE SOLDER TAILS ON THIS PRODUCT ARE DESIGNED TO BE COMPLIANT IN ORDER TO ACCOMMODATE PRINTED CIRCUIT BOARD DIMENSIONAL VARIATIONS. THEREFORE, HOLDDOWN HARDWARE IS REQUIRED TO SECURE THE CONNECTOR TO THE PRINTED CIRCUIT BOARD FOR MOST TYPES OF SOLDER REFLOW OPERATIONS. FOR FURTHER APPLICATION DATA, INCLUDING HOLE SIZES FOR VARIOUS TYPES OF HARDWARE, SEE TA-932.

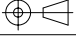
⑤ DO NOT REMOVE PROCESSING CAP UNTIL SOLDERING IS COMPLETED.

⑥ BY ADDING LETTER "H" TO TABULATED P/N, THE OPTIONAL HOLD-DOWNS WILL BE SUPPLIED INTEGRAL W/CONNECTOR. EXAMPLE: XXXXX-XXXH (HOLD-DOWN)

⑦ PART NUMBERS WITH LF SUFFIX AT THE END ARE LEAD FREE.

8. THE HOUSING WILL WITHSTAND EXPOSURE TO 260°C PEAK TEMPERATURE FOR 20 SECONDS IN A CONVECTION, INFRA-RED OR VAPOR PHASE REFLOW OVEN.

⑨ IF "LF" P/N THE PRODUCT MEETS EUROPEAN UNION DIRECTIVES AND OTHER COUNTRY REGULATION AS DESCRIBED IN GS-22-008.

mat'l. code				surface	tolerance	projection	product family
-				ISO 1302 ✓	ISO 406 ISO 1101	 INCH/MM scale 1:1	MICROPAX
ltr	ecr	no	dr	date	tolerances unless otherwise specified		title
N					angles linear .XX±.01/.3 .xxx±.005/.13 .xxxx±.0020/.051		MICROPAX .025M SMT PLUG DOUBLE MODULE
					0'±2'		
				dr	T. HOUTZ 3/04/93		dwg no sheet 3 of 3 size
				enr	M. HAHN 3/04/93		91294 A3
				chr	M. HAHN 3/04/93		
				appd	M. HAHN 3/04/93		type Product Customer Drawing
sheet index	revision sheet						