

- NOTES:**
- SEE PRODUCT SPECIFICATION PS-99020-0071.
 - PACKING: TAPE AND REEL, FOR DETAIL SEE SDA-91228-9001, SHT.1
 - PUSH ROD/LEVER MUST NOT PROTRUDE BEYOND HOUSING EDGE IN THIS AREA.
 - TAILS ON EACH SIDE OF CONNECTOR TO LIE WITHIN 0.12mm OF EACH OTHER
 - DATECODE: (YEAR, WEEK, WEEK, DAY, HOUR, HOUR)

ITEM	COMPONENT	QTY	MATERIAL
1	HOUSING	1	LIQUID CRYSTAL POLYMER (LCP) 30% GLASS FILL, UL94 V-0, COLOUR: BLACK
2	TERMINAL	8	0.15 PHOSPHOR BRONZE, 0.1um MIN Au OVER Pd/Ni IN CONTACT AREA 2.5um MIN Sn ON SMT TAILS.
3	PUSH BUTTON	1	GF NYLON 46, YELLOW
4	COIL SPRING	1	0.25 STAINLESS STEEL
5	PUSH ROD	1	0.4 STAINLESS STEEL
6	C-PIN	1	STEEL
7	LEVER	1	0.4 STAINLESS STEEL

MOD TO SIGNAL CORE
 EC NO: E2005-0999
 DRWN: FUGGAN
 CHKD:
 APPR: EFOLAN
 2005/08/24
 2005/08/29
 2005/09/05

QUALITY SYMBOLS
 ▽=0
 ▽=0

GENERAL TOLERANCES (UNLESS SPECIFIED)

	MM	INCH
4 PLACES	± ---	± ---
3 PLACES	± ---	± ---
2 PLACES	± 0.05	± ---
1 PLACE	± 0.10	± ---

ANGULAR ± 2 °

DRAFT WHERE APPLICABLE MUST REMAIN WITHIN DIMENSIONS

DIMENSION STYLE
MM ONLY

DRAWN BY	DATE
JM	1996/09/16
CHECKED BY	DATE
JM	1996/09/16
APPROVED BY	DATE
MW	1996/09/16

MATERIAL NO. 91228 0001

SCALE 4:1

DESIGN UNITS METRIC

THIRD ANGLE PROJECTION

TITLE SIM PCB CONNECTOR

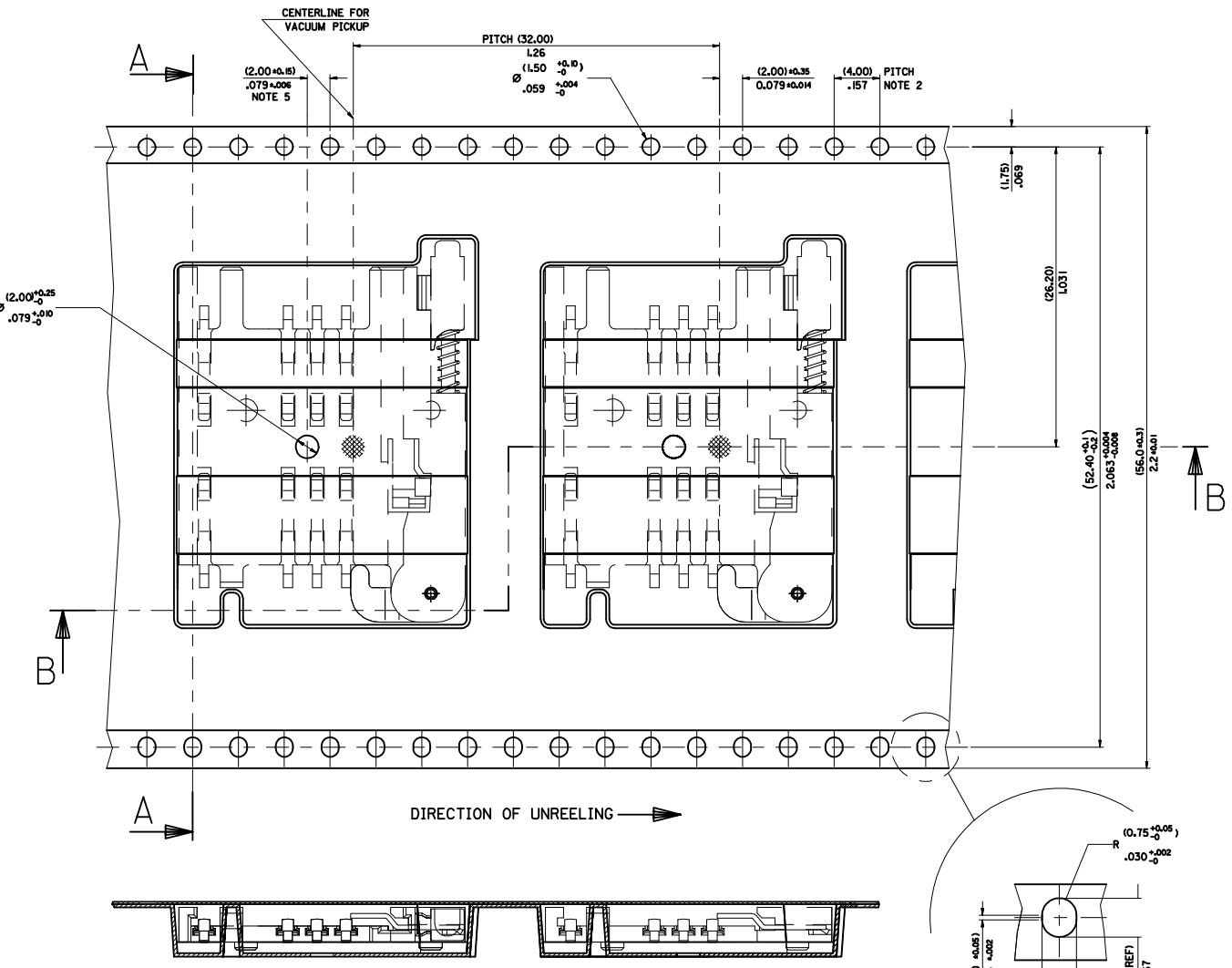
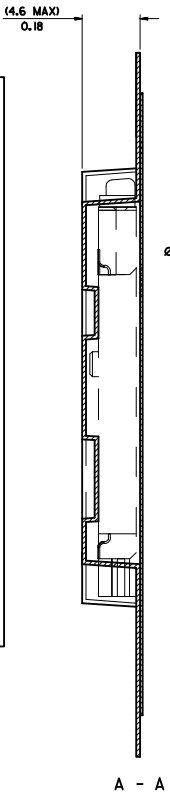
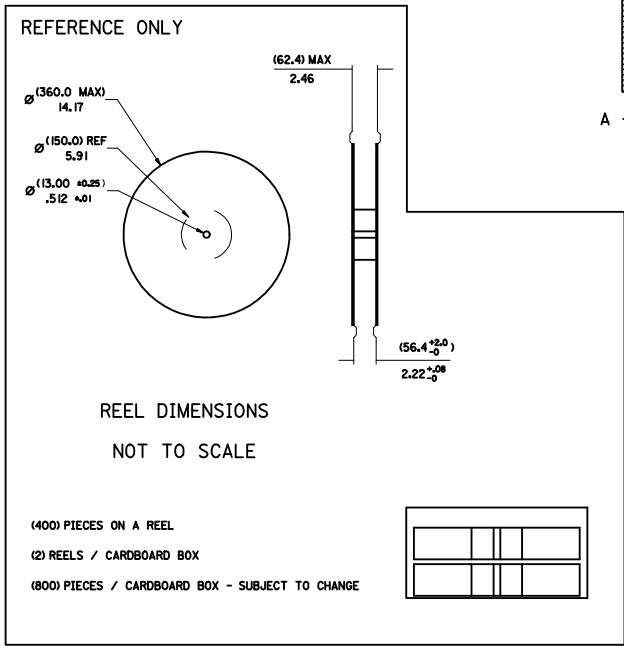
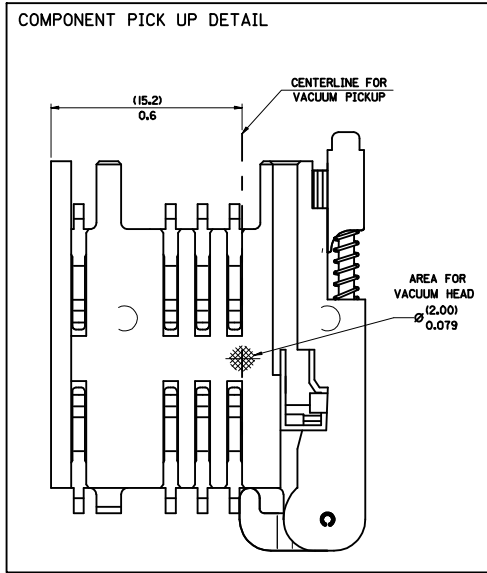
MOLEX INCORPORATED

DOCUMENT NO. SDA-91228

SHEET NO. 1 OF 5

THIS DRAWING CONTAINS INFORMATION THAT IS PROPRIETARY TO MOLEX INCORPORATED AND SHOULD NOT BE USED WITHOUT WRITTEN PERMISSION

PART NO	DESCRIPTION
91228-0001 & 91228-3001	SIM CONNECTOR WITHOUT PEGS
91228-0002 & 91228-3002	SIM CONNECTOR WITH PEGS
91228-0012 & 91228-3012	SIM CONNECTOR WITH PEGS
91228-0007 & 91228-3007	SIM CONNECTOR WITH PEGS



- NOTES:**
- 1) MATERIAL :
CARRIER TAPE : VOLUME CONDUCTIVE POLYSTYRENE, 0.40 REF THICK, BLACK
COVER TAPE : COLD SEAL POLYESTER, 0.08 REF THICK TRANSPARENT
 - 2) PITCH TOLERANCE OVER ANY 10 PITCHES ± 0.2 MM
 - 3) PEEL FORCE OF THE COVER TAPE IS 0.1 N TO 1.0 N
AT A MAXIMUM REEL SPEED OF 300 MM/MIN ± 10%
 - 4) PACKAGING SPEC, PK-91228-002
 - 5) REFERENCE TO IEC 286-3 EXCEPT WHERE NOTED

MOD REV. LEVELS	EC NO: E2009-0200	2009/01/13
	DRW: JWCARTON	2009/01/14
	CHKD: APPR: EFLAN	2009/01/15
	REV	DESCRIPTION

QUALITY SYMBOLS	GENERAL TOLERANCES (UNLESS SPECIFIED)	
	mm	INCH
▽=0	4 PLACES ± --- ± ---	
▽=0	3 PLACES ± --- ± ---	
	2 PLACES ± 0.10 ± ---	
	1 PLACE ± 0.20 ± ---	
	ANGULAR ± 2 °	

DIMENSION STYLE		SCALE	DESIGN UNITS
MM/IN	1:1	METRIC	
DRAWN BY	DATE	TITLE	
DMAHER	2006/12/07	BLISTER PACKAGING	
CHECKED BY	DATE	SIM CARD PCB HOUSING	
FUGGAN	2006/12/07		
APPROVED BY	DATE		
EFLAN	2006/12/07		

SCALE 10:1

MOLEX INCORPORATED

DOCUMENT NO. SDA-91228-9001

SHEET NO. 1 OF 4

THIS DRAWING CONTAINS INFORMATION THAT IS PROPRIETARY TO MOLEX INCORPORATED AND SHOULD NOT BE USED WITHOUT WRITTEN PERMISSION