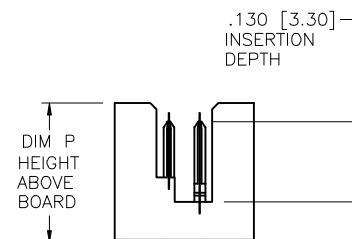
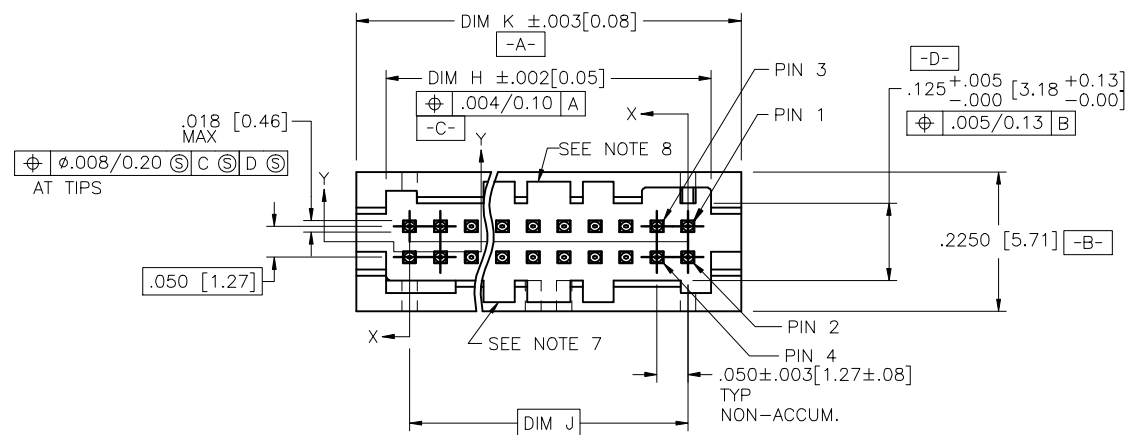


PRODUCT NUMBER  
SEE TABLE



SEE SHEET 3 FOR  
LOCATOR/HOLDDOWN  
VARIATIONS

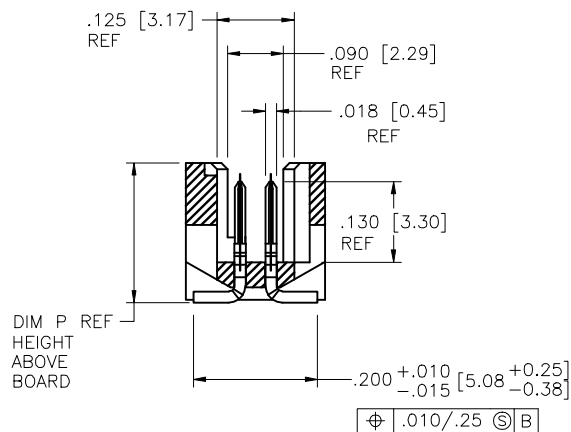
.018 [0.46]  
AT TIPS  
[C] [C] [D] [D]  
[A] [S]

.050  $\pm 0.003$  [1.27  $\pm 0.08$ ]  
TYP  
NON-ACCUM.

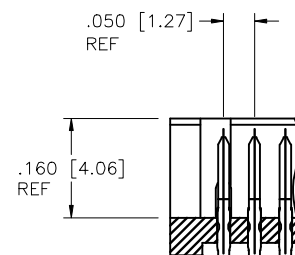
mat'l. code SEE NOTES				surface ISO 1302	tolerance ISO 406 ISO 1101	projection	product family
lir	ecn no	dr	date	tolerances unless otherwise specified			RIB CAGE
V	V10329	CRG	6/06/01	angles	XX $\pm 0.01$ / XX $\pm 0.03$	INCH/MM	RIB CAGE III SMT
W	V04-0004	DAI	1/21/04	linear	XXX $\pm 0.05$ / XXX $\pm 0.13$		VERT. HEADER ASS'Y
X	M05-0084	MHT	5/05/05	$\sigma \pm z$	XXXX $\pm 0.020$ / XXX $\pm 0.051$	scale 1:1	
Y	M06-0284	AEA	7/27/06	dr	M. CORNMANN	6/07/95	dwg no
AA	M08-0245	MHT	8/27/08	engr	D. WHITING	6/07/95	sheet 1 of 6
AB	M09-0058	MHT	4/02/09	chr	D. WHITING	6/07/95	size
AC	M09-0087	MHT	6/10/09	appd	D. WHITING	6/07/95	A3
sheet	revision	AC	AC	AC	AC	AC	type
index	sheet	1	2	3	4	5	Product Customer Drawing

PRODUCT NUMBER  
SEE TABLE

SIZE	DIM H	DIM J	DIM K	DIM L
2X5	.275/6.99	.200/5.08	.372/9.45	.320/8.13
2X10	.525/13.34	.450/11.43	.622/15.80	.570/14.48
2X15	.775/19.68	.700/17.78	.872/22.15	.820/20.83
2X20	1.025/26.03	.950/24.13	1.122/28.50	1.070/27.18
2X25	1.275/32.38	1.200/30.48	1.372/34.85	1.320/33.53
2X30	1.525/38.74	1.450/36.83	1.622/41.20	1.570/39.88
2X35	1.775/45.08	1.700/43.18	1.872/47.55	1.820/46.23
2X40	2.025/51.43	1.950/49.53	2.122/53.90	2.070/52.58
2X45	2.275/57.78	2.200/55.88	2.372/60.25	2.320/58.93
2X50	2.525/64.14	2.450/62.23	2.622/66.60	2.570/65.28



SECTION X-X  
ROTATED 90° CW



SECTION Y-Y

mat'l. code	SEE NOTES	surface	ISO 1302	tolerance	ISO 406	projection	product family
lit	ecn no	dr	date	tolerances unless otherwise specified	ISO 1101	INCH/MM	RIB CAGE
AC				angles	XX ±.01/XX±0.3	scale 1:1	title
				linear	XXX±.005/XXX±0.13		RIB CAGE III SMT
				dr	XXXX±.0020/XXX±0.051		VERT. HEADER ASS'Y
				engr	M. CORNMAN 6/07/95		dwg no
				chr	D. WHITING 6/07/95		sheet 2 of 6
				appd	D. WHITING 6/07/95		size
sheet	revision						95781
index	sheet						A3
							type
							Product Customer Drawing

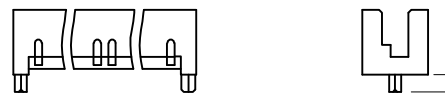
PRODUCT NUMBER  
SEE TABLE

# LOCATOR/HOLDDOWN VARIATIONS

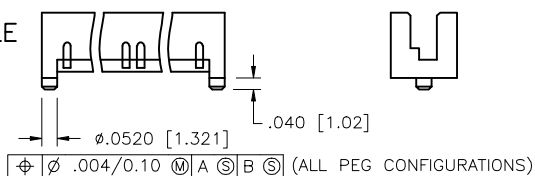
STYLE  
1



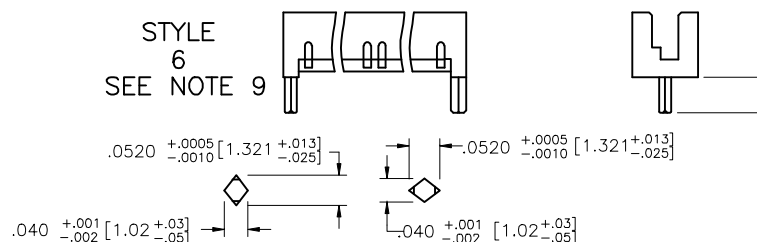
STYLE  
5



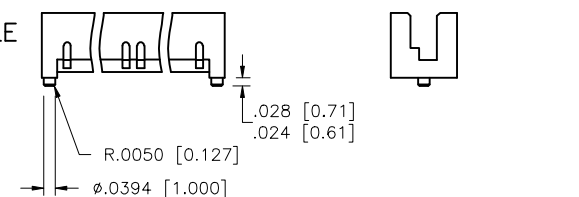
STYLE  
2



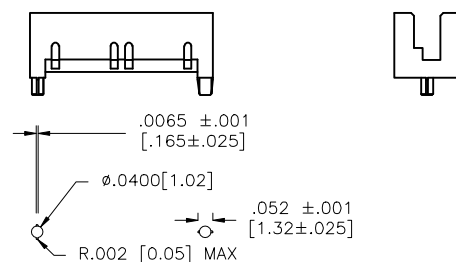
STYLE  
6  
SEE NOTE 9



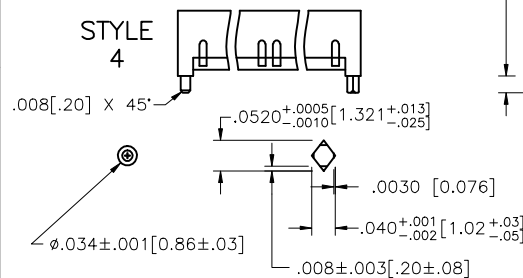
STYLE  
3



STYLE  
7



STYLE  
4



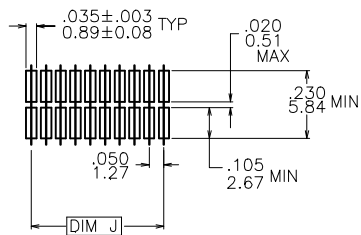
mat'l. code SEE NOTES				surface ISO 1302	tolerance ISO 406 ISO 1101	projection	product family
lit	ecn no	dr	date	ISO 1302	tolerances unless otherwise specified	ISO 1101	RIB CAGE
AC				angles	linear	INCH/MM	RIB CAGE III SMT
				σ±z	linear	scale 1:1	VERT. HEADER ASS'Y
				dr	M. CORNMAN	6/07/95	dwg no
				engr	D. WHITING	6/07/95	sheet 3 of 6
				chr	D. WHITING	6/07/95	size
				appd	D. WHITING	6/07/95	A3
sheet	revision						type
index	sheet						Product Customer Drawing



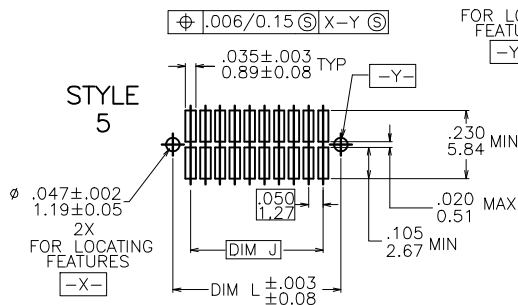
PRODUCT NUMBER  
SEE TABLE

# RECOMMENDED PCB MOUNTING PAD PATTERN

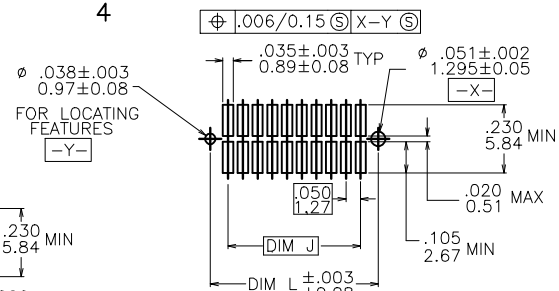
STYLE  
1



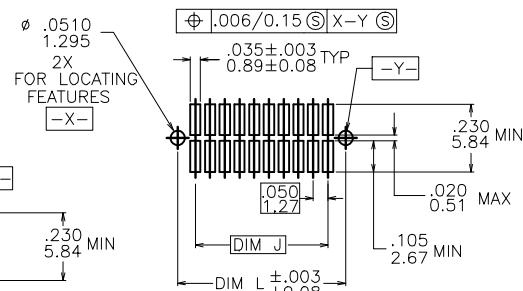
STYLE  
5



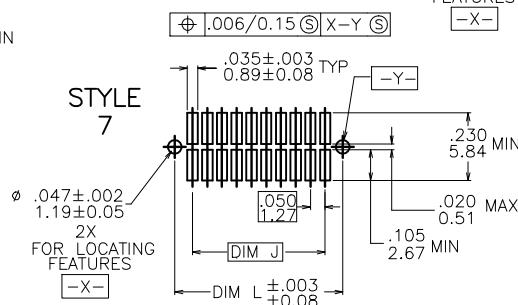
STYLE  
4



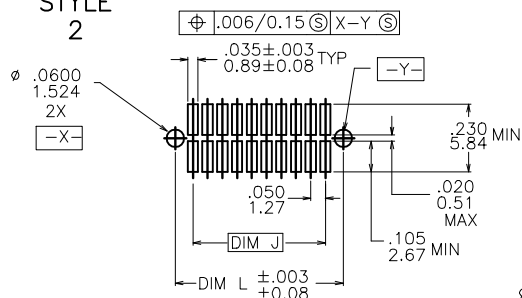
STYLE  
6



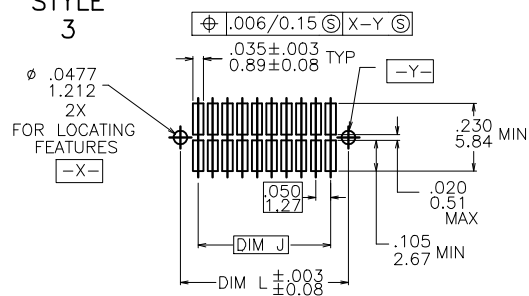
STYLE  
7



STYLE  
2



STYLE  
3



mat'l. code SEE NOTES				surface ISO 1502	tolerance ISO 406 ISO 1101	projection	product family RIB CAGE
ltr	ecn no	dr	date	angles	linear	INCH/MM	title RIB CAGE III SMT VERT. HEADER ASS'Y
AC						scale 1:1	dwg no 95781
				dr	M. CORNMAN	6/07/95	sheet 4 of 6 size A3
				engr	D. WHITING	6/07/95	
				chr	D. WHITING	6/07/95	
				appd	D. WHITING	6/07/95	
sheet index	revision sheet						type Product Customer Drawing

PRODUCT NUMBER NOTE 1,4A & 4B	DIM P HEIGHT ABOVE BOARD (REF.)	HOLDDOWN STYLE
72428-1XX	.244/6.20	1
73546-1XX	.364/9.25	1
73547-1XX	.364/9.25	2
73548-1XX	.364/9.25	4
84700-1XX	.226/5.74	7
84701-1XX	.298/7.57	7
84734-1XX	.364/9.25	7
87401-1XX	.226/5.74	6
87409-1XX	.226/5.74	2
87849-1XX	.226/5.74	1
88566-1XX	.260/6.60	2
90098-1XX	.298/7.57	2
90863-1XX	.226/5.74	1
91036-1XX	.364/9.25	5
91423-1XX	.226/5.74	2
91855-1XX	.226/5.74	5
92099-1XX	.226/5.74	4
92412-1XX	.298/7.57	4
93206-1XX	.226/5.74	3
93221-1XX	.298/7.57	1
93289-1XX	.298/7.57	5

TABLE A

\* CUSTOMER SPECIAL

## NOTES:

- ① XXXXX-XXXLE  
LEAD FREE OPTION (NOTE 11& 13)  
NUMBER OF POSITIONS (NOTE 2)
- ② NUMBER OF POSITIONS = 05 THRU 50 IN 5 POS INCREMENTS.  
(EXAMPLE : 105=10 POS., 110=20 POS. ETC.)
- ③ REQUIRED ON -X40,-X45 & -X50 POSITION PARTS ONLY.
4. PACKAGING :  
A. ANTISTATIC TUBES. SEE TABLE A  
B. ADD "CT" TO END OF DASH NUMBER FOR CONNECTOR  
WITH VACUUM CAP IN ANTISTATIC TUBES.  
EX. : XXXXX-1XXCT  
C. PRESSURE SEALED TAPE AND REEL. SEE TABLE C  
FOR AVAILABLE PART NUMBERS.
- ⑤ HOUSING MATERIAL :  
GLASS FILLED THERMOPLASTIC FLAME RETARDANT PER UL 94V-0.  
COLOR : NATURAL
- ⑥ TERMINAL PLATING :  
30u"/.76u HARD Au OVER 50u"/1.27u Ni ON CONTACT ZONES.  
100u"/2.54u TIN LEAD OVER 50u"/1.27u Ni IN SOLDERING ZONES.  
LEAD FREE OPTION:  
30u"/.76u HARD Au OVER 50u"/1.27u Ni ON CONTACT ZONES.  
100u"/2.54u PURE TIN OVER 50u"/1.27u Ni IN SOLDERING ZONES.
- ⑦ MOLDING FLOW RESTRICTOR QUANTITY AND LOCATION IS  
MANUFACTURING OPTION.
- ⑧ VACUUM CAP SLOT REQUIRED ON ALL SIZES, SLOT MAY  
BE LOCATED ON OPPOSITE SIDE FOR 2 X 5.
- ⑨ STYLE 6 IS NOT AVAILABLE IN TAPE AND REEL.
- ⑩ 90863-1XX IS PACKAGED ONLY IN TAPE AND REEL.
- ⑪ ADD LF SUFFIX AT THE END OF PART NUMBER FOR LEAD FREE OPTION.
12. THE HOUSING WILL WITHSTAND EXPOSURE TO 260°C PEAK TEMPERATURE  
FOR 20 SECONDS IN A CONVECTION, INFRA-RED OR VAPOR PHASE REFLOW  
OVEN. SEE APPLICATION NOTE/PROCEDURES IF THEY ARE AVAILABLE.
- ⑬ THIS PRODUCT MEETS EUROPEAN UNION DIRECTIVES AND OTHER  
COUNTRY REGULATION AS DESCRIBED IN GS-22-008.

SEE NOTE 10

\*

mat'l. code SEE NOTES				surface ISO 1502		tolerance ISO 406 ISO 1101		projection INCH/MM		product family RIB CAGE	
litr	ech no	dr	date	tolerances unless otherwise specified		linear		scale 1:1		title RIB CAGE III SMT VERT. HEADER ASS'Y	
AC				XX ±.01/XX±0.3						dwg no 95781	
				XXX±.005/XX±0.13						sheet 5 of 6 size A3	
				XXXX±.0020/XXX±0.051						type Product Customer Drawing	
				dr M. CORNMAN 6/07/95							
				engr D. WHITING 6/07/95							
				chr D. WHITING 6/07/95							
				appd D. WHITING 6/07/95							
sheet	revision										
index	sheet										

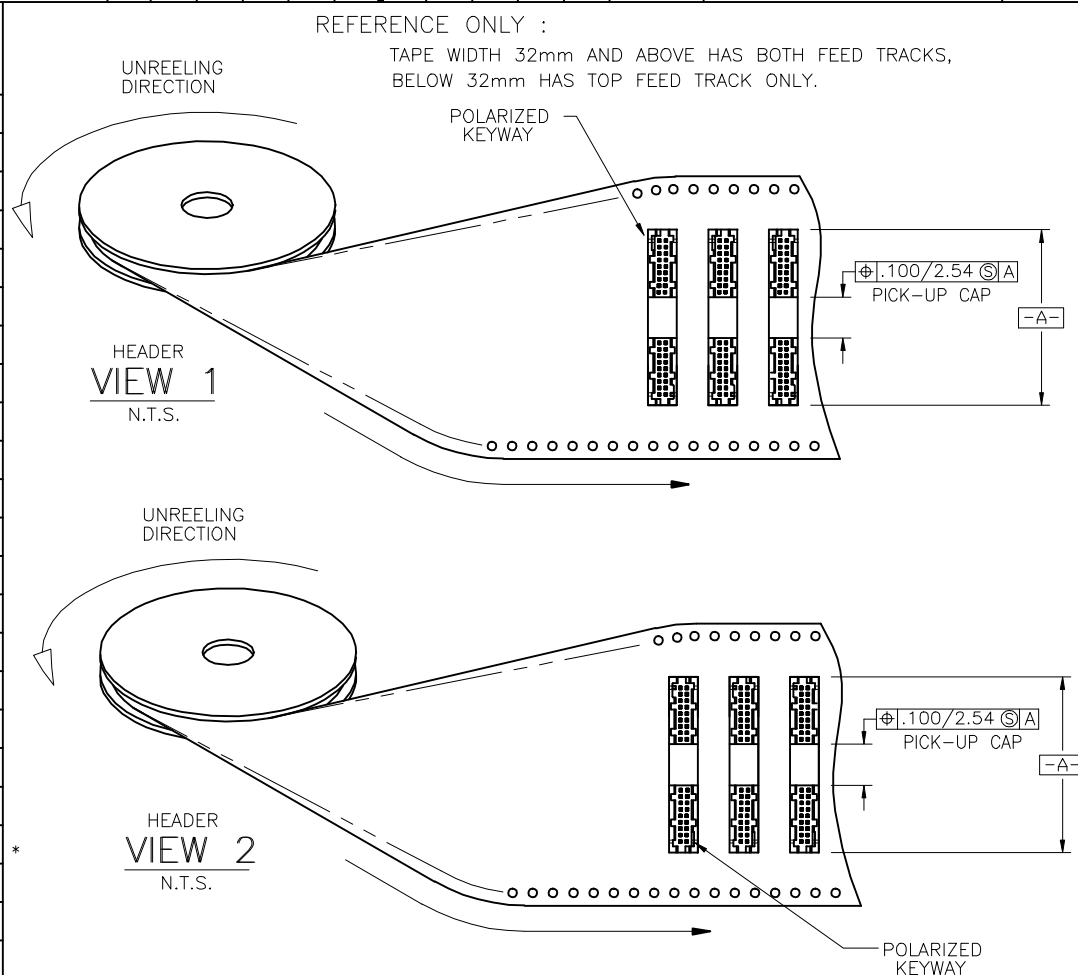


FCIconnect.com

Copyright FCI

PRODUCT NUMBER NOTE 11,4C	QTY. REEL	TAPE WIDTH PITCH MM	CONNECTOR ORIENTATION IN TAPE POCKET
72428-120TR	500	44/12	VIEW 1
73547-110TR		24/12	
84700-105TR		24/12	
84700-135TR		56/12	
87409-115TR		44/12	
87409-120TR		44/12	
87409-125TR		56/12	
87409-130TR		56/12	
87409-140TR		72/12	
87849-110TR		24/12	
87849-115TR		44/12	
87849-120TR		44/12	
87849-125TR		56/12	
87849-130TR	500	56/12	
88566-110TR	750	24/12	
88566-115TR	500	44/12	
88566-130TR	500	56/12	
90863-110		24/12	
90863-115		44/12	VIEW 1
90863-115REV		44/12	VIEW 2
90863-120		44/12	VIEW 1
90863-125		56/12	
90863-130		56/12	
91036-110P		24/16	
93206-115TR		44/12	
93221-105TR		24/12	
93221-110TR		32/12	
93221-125TR	500	56/12	VIEW 1

TABLE C

\* CUSTOMER SPECIAL  
NO VACUUM CAP

mat'l. code	SEE NOTES	surface ISO 1302	tolerance ISO 406 ISO 1101	projection	product family
ltr	ech no	dr	date		RIB CAGE
AC				linear	title
				angles	RIB CAGE III SMT
				0'±2'	VERT. HEADER ASS'Y
				dr M. CORNMAN 6/07/95	dwg no
				enrg D. WHITING 6/07/95	95781
				chr D. WHITING 6/07/95	sheet 6 of 6 size
				appd D. WHITING 6/07/95	A3
sheet	revision				type Product Customer Drawing
index	sheet				