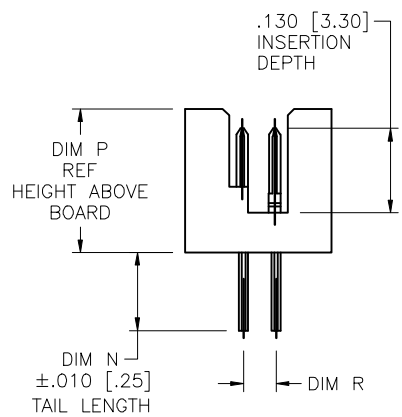
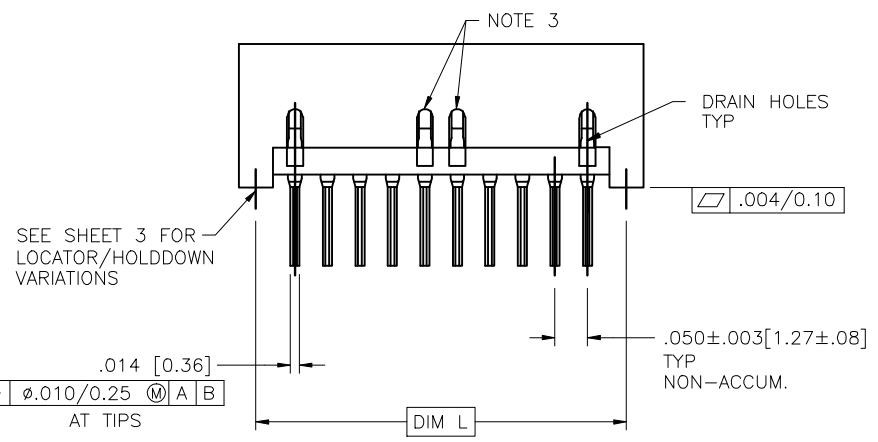
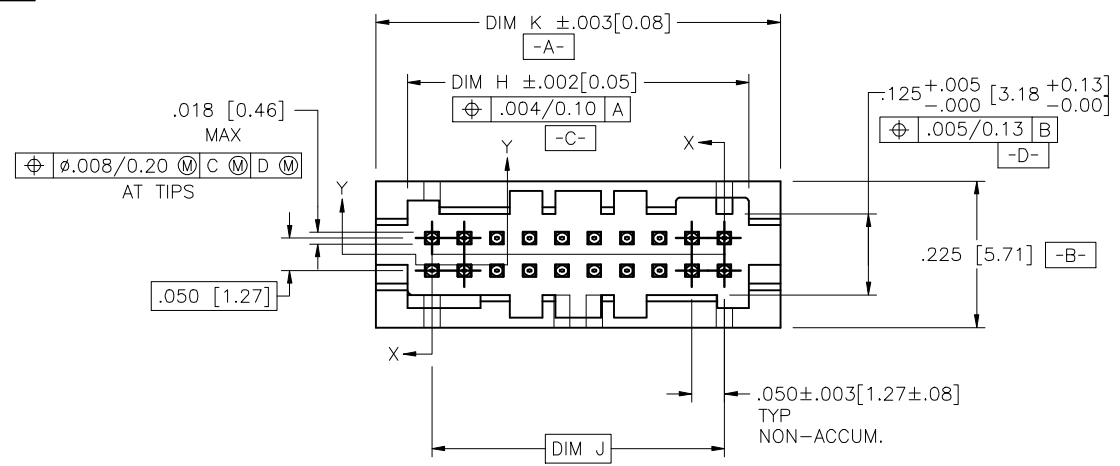


PRODUCT NUMBER
SEE TABLE



mat'l. code				surface	tolerance	projection	product family
-				ISO 1302	ISO 406	ISO 1101	RIBCAGE
ltr	ecn no	dr	date	tolerances unless otherwise specified		INCH/MM	title
J	V91778	EPK	8/13/99	angles	.XX±.01/0.3		
K	V10994	CRG	3/15/01	linear	.xxx±.005/0.13	scale 4:1	RIBCAGE III T/M VERT. HEADER ASS'Y
L	J10329	CRG	6/6/01	0'±2'	.xxx±.0020/0.051		
M	M05-0123	MHT	6/06/05	dr	M. CORNMAN	6/6/95	dwg no
M	M06-0225	ERE	06/12/06	engr	D. WHITING	6/6/95	sheet 1 of 6
P	M06-0370	MHT	9/26/06	chr	D. WHITING	6/6/95	size
R	M09-0058	MHT	4/04/09	appd	D. WHITING	6/6/95	A3
sheet	revision	R	R	R	R	R	type
index	sheet	1	2	3	4	5	Product Customer Drawing

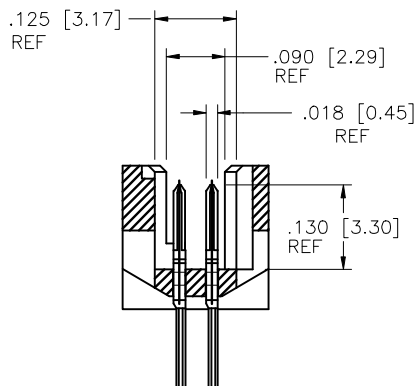


Copyright FCI

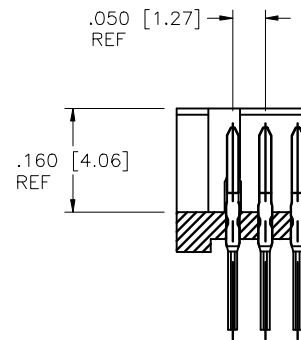
form A3

PRODUCT NUMBER
SEE TABLE

SIZE	DIM H	DIM J	DIM K	DIM L
2X5	.275/6.99	.200/5.08	.372/9.45	.320/8.13
2X10	.525/13.34	.450/11.43	.622/15.80	.570/14.48
2X15	.775/19.68	.700/17.78	.872/22.15	.820/20.83
2X20	1.025/26.03	.950/24.13	1.122/28.50	1.070/27.18
2X25	1.275/32.38	1.200/30.48	1.372/34.85	1.320/33.53
2X30	1.525/38.74	1.450/36.83	1.622/41.20	1.570/39.88
2X35	1.775/45.08	1.700/43.18	1.872/47.55	1.820/46.23
2X40	2.025/51.43	1.950/49.53	2.122/53.90	2.070/52.58
2X45	2.275/57.78	2.200/55.88	2.372/60.25	2.320/58.93
2X50	2.525/64.14	2.450/62.23	2.622/66.60	2.570/65.28



SECTION X-X
ROTATED 90° CW



SECTION Y-Y

mat'l. code		surface		tolerance		projection		product family	
-		ISO 1302		ISO 406 ISO 1101				RIBCAGE	
Int. ecn no.		dr.		date				title	
R								RIBCAGE III T/M VERT. HEADER ASS'Y	
								dwg no. sheet 2 of 6 size	
								95776 A3	
								type Product Customer Drawing	
sheet		revision							
index		sheet							

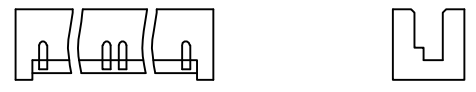


Copyright FCJ

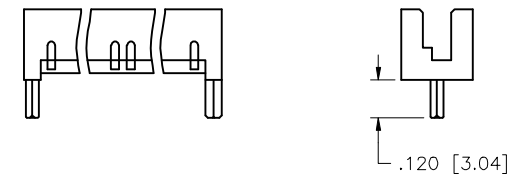
PRODUCT NUMBER
SEE TABLE

LOCATOR/HOLDDOWN VARIATIONS

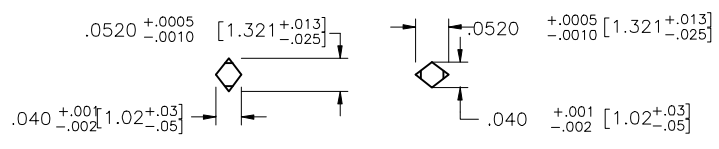
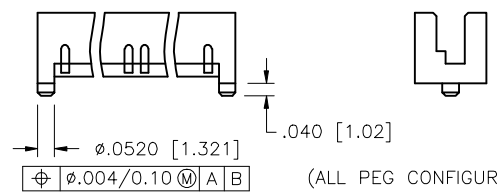
STYLE 1



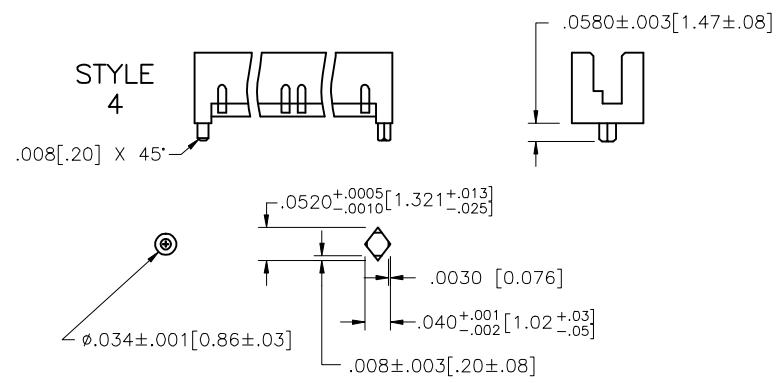
STYLE 6



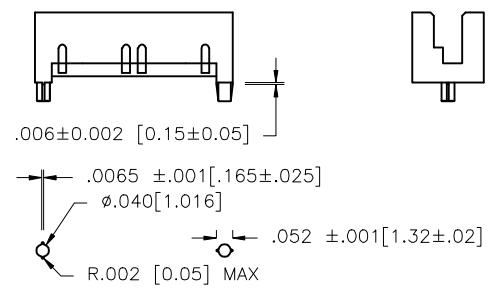
STYLE 2



STYLE 4



STYLE 7



Copyright FCJ

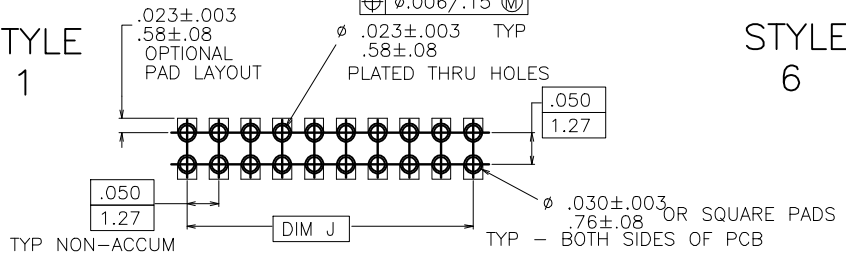
mat'l. code		surface		tolerance		projection		product family	
-		ISO 1302		ISO 406		1st angle		RIBCAGE	
tr		ecn no		dr		date		title	
R								RIBCAGE III T/M	
								VERT. HEADER ASS'Y	
								scale 4:1	
								dwg no 95776	
								sheet 3 of 6 size A3	
								type Product Customer Drawing	
sheet index		revision sheet							

form A3 1 2 3 4 5 6

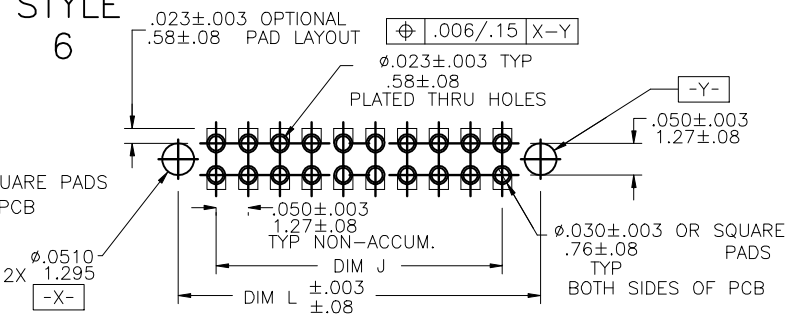
PRODUCT NUMBER
SEE TABLE

RECOMMENDED P. C. B. LAYOUT

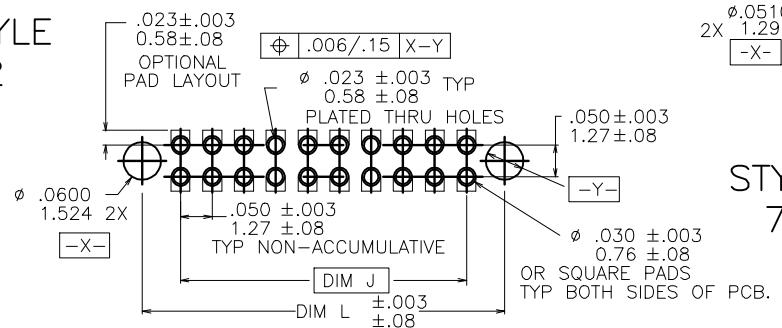
STYLE
1



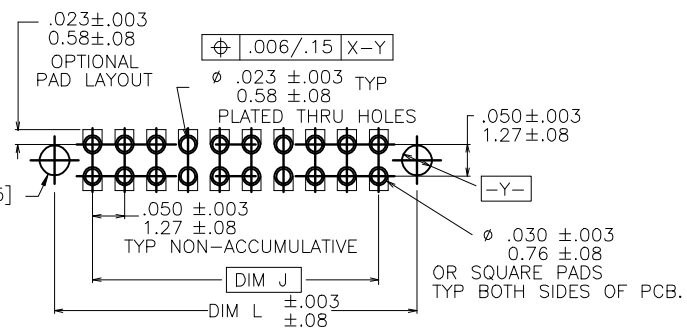
STYLE
6



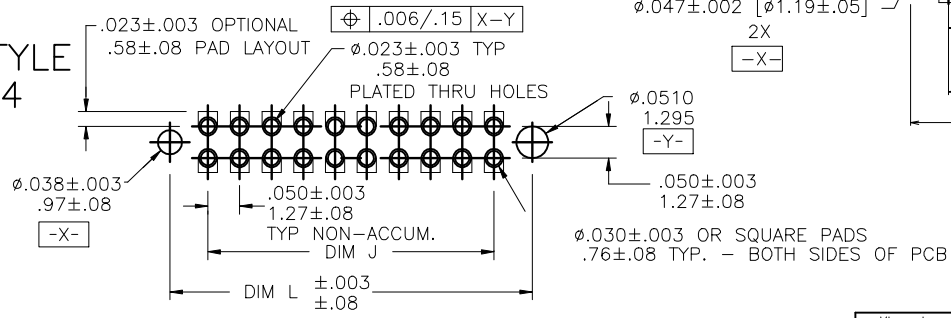
STYLE
2



STYLE
7



STYLE
4



mat'l. code	surface	tolerance	projection	product family
-	ISO 1902	ISO 406 ISO 1101		RIBCAGE
ltr	ec'n no	dr	date	title
R				RIBCAGE III T/M VERT. HEADER ASS'Y
				scale 4:1
				dwg no 95776
				sheet 4 of 6 size A3
				type Product Customer Drawing
sheet	revision			
index	sheet			



Copyright FCI

PRODUCT NO. NOTE 1,7	DIM N SOLDER TAIL LENGTH	DIM P HEIGHT ABOVE BOARD (REF)	DIM R SOLDER TAIL SPREAD	HOLDDOWN STYLE	PRODUCT NO. NOTE 1,7	DIM N SOLDER TAIL LENGTH	DIM P HEIGHT ABOVE BOARD (REF)	DIM R SOLDER TAIL SPREAD	HOLDDOWN STYLE
72449-1XX	.090/2.29	.221/5.63	.050/1.27	2	87400-1XX	.075/1.91	.221/5.63	.059/1.50	2
72450-1XX	.075/1.91	.293/7.44		2	87405-1XX	.075/1.91			1
72451-1XX	.115/2.92	.221/5.63		2	87405-2XX	.090/2.29			1
72452-1XX	.115/2.92	.221/5.63		6	87406-1XX	.075/1.91			6
73541-1XX	.075/1.91	.293/7.44		1	87406-2XX	.100/2.54			6
73543-1XX	.090/2.29	.359/9.12		1	87410-1XX	.090/2.29	.221/5.63		2
87407-1XX	.090/2.29	.221/5.63		1	87411-1XX	.075/1.91	.293/7.44		2
87850-1XX	.075/1.91			2	87412-1XX	.115/2.92	.221/5.63		2
87851-1XX	.075/1.91			6	89297-1XX	.115/2.92	.221/5.63	.059/1.50	6
88550-1XX	.135/3.43			2					
89289-1XX	.075/1.91			1					
89465-1XX	.115/2.92			1					
93149-1XX	.075/1.91			4					
98382-1XX	.090/2.29	.221/5.63		7					
98383-1XX	.090/2.29	.293/7.44		1					
98384-1XX	.090/2.29	.293/7.44		7					
98385-1XX	.090/2.29	.359/9.12	.050/1.27	7					

- 8. THIS PRODUCT MEETS EUROPEAN UNION DIRECTIVES AND OTHER COUNTRY REGULATION AS DESCRIBED IN GS-22-008.
- 9. THE HOUSING WILL WITHSTAND EXPOSURE TO 260°C PEAK TEMPERATURE FOR 15 SECONDS IN A WAVE SOLDER APPLICATION WITH A 1.5mm MINIMUM THICK CIRCUIT BOARD. SEE APPLICATION NOTES/PROCEDURES IF THEY ARE AVAILABLE.

NOTES:

- ① XXXXX-XXXLF
 - LEAD FREE OPTION (NOTE 7,8)
 - NUMBER OF POSITIONS (NOTE 2)
- ② NUMBER OF POSITIONS = 05 THRU 50 IN 5 POS INCREMENTS. (EXAMPLE: 105=10 POS., 110=20 POS. ETC.)
- ③ REQUIRED ON -X40,-X45 & -X50 POSITION PARTS ONLY.
- 4. PACKAGE PER BUS-14-179.
- 5. HOUSING MATERIAL:
GLASS FILLED THERMOPLASTIC FLAME RETARDANT
PER UL 94V-0.
COLOR: NATURAL
- 6. TERMINAL PLATING:
30u"/.76u MIN HARD Au OVER 50u"/1.27u Ni ON CONTACT ZONES.
100u"/2.54u MIN Sn OVER 50u"/1.27u Ni IN SOLDERING ZONES.
- ⑦ ADD "LF" SUFFIX AT THE END OF PART NUMBER FOR LEAD FREE OPTION.

mat'l. code		surface		tolerance		projection		product family	
-		ISO 1302		ISO 1101				RIBCAGE	
ltr	ecn no	dr	date	tolerances unless otherwise specified					
R				angles	linear	INCH/MM		title	
				0°±2'	.XX±.01/0.3	Scale 4:1		RIBCAGE III T/M	
					.XXX±.005/0.13			VERT. HEADER ASS'Y	
					.XXX±.0020/0.051			dwg no	
dr	M. CORNMAN	6/6/95						sheet 6 of 6 size	
engr	D. WHITING	6/6/95						95776 A3	
chr	D. WHITING	6/6/95						type	
appd	D. WHITING	6/6/95						Product Customer Drawing	
sheet	revision								
index	sheet								

FCJ
 FCconnect.com
 Copyright FCJ