

ENG. NO.
SDAX-87135-*****

EDP NO.

SIMILAR ITEM

PROJECT NO.
S87135.DGN

DO NOT SCALE DRAWING

PART NUMBER LEGEND

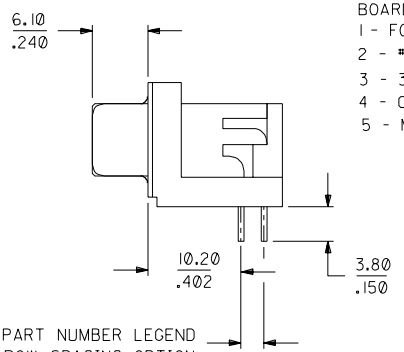
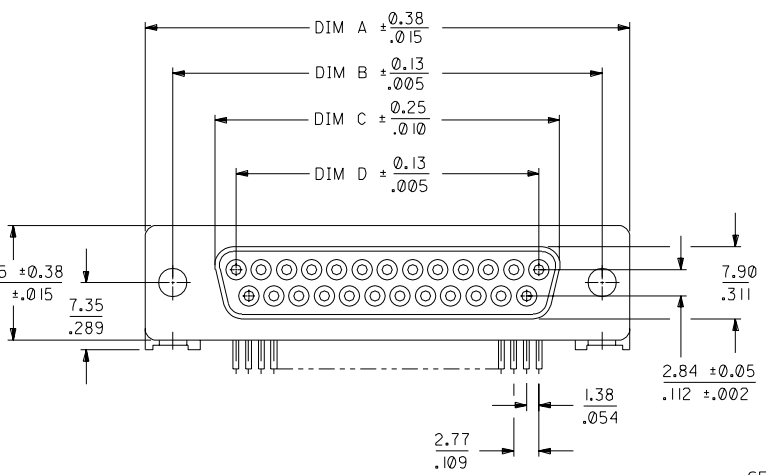
87135 - * * * *

- BOARD MTG OPTIONS
- 1 - FORK LOCK
 - 2 - #4-40 UNC-2B
 - 3 - 3.2 DIA THRU HOLE
 - 4 - GROUND STRAP
 - 5 - M3

- FACE MTG. OPTIONS
- 1 - FLUSH INSERT - #4-40 UNC-2B
 - 2 - HEX JACK SCREW
 - 3 - FLUSH INSERT-M3
 - 4 - HEX JACK SCREW W/ LOCK WASHER

- TERM. PLATING CODE & ROW SPACING OPTIONS
(2.54mm BETWEEN ROWS)
- 1 - 30uin GOLD
 - 2 - 15uin GOLD
 - 3 - FLASH GOLD
- (2.84mm BETWEEN ROWS)
- 4 - 30uin GOLD
 - 5 - 15uin GOLD
 - 6 - FLASH GOLD

CKT SIZE



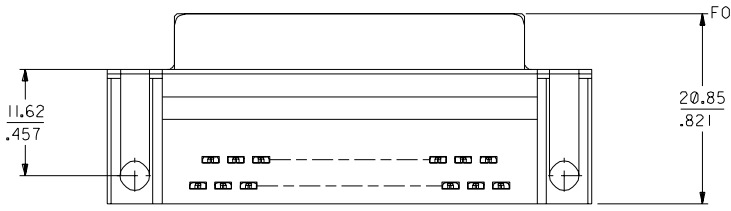
SEE PART NUMBER LEGEND FOR ROW SPACING OPTION

NOTES:

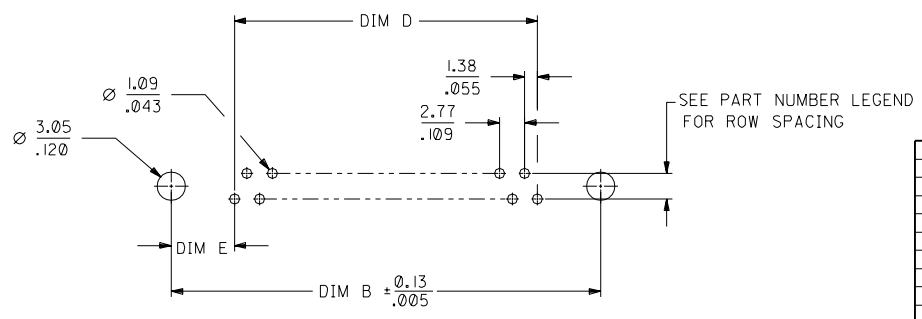
1. MATERIALS:

INSULATOR - POLYESTER GLASS FILLED, 94V-0, COLOR:BLACK
 CONTACT - PHOSPHOR BRONZE
 PLATING :GOLD IN CONTACT AREA OVER 1.27um/50uin NICKEL ALL OVER AND 3.8um/150uin 60/40 TIN/LEAD ON TAILS (REFER PART NO. LEGEND FOR AVAILABLE OPTIONS)

2. SEE SHEET NO.2 FOR HARDWARE OPTIONS.

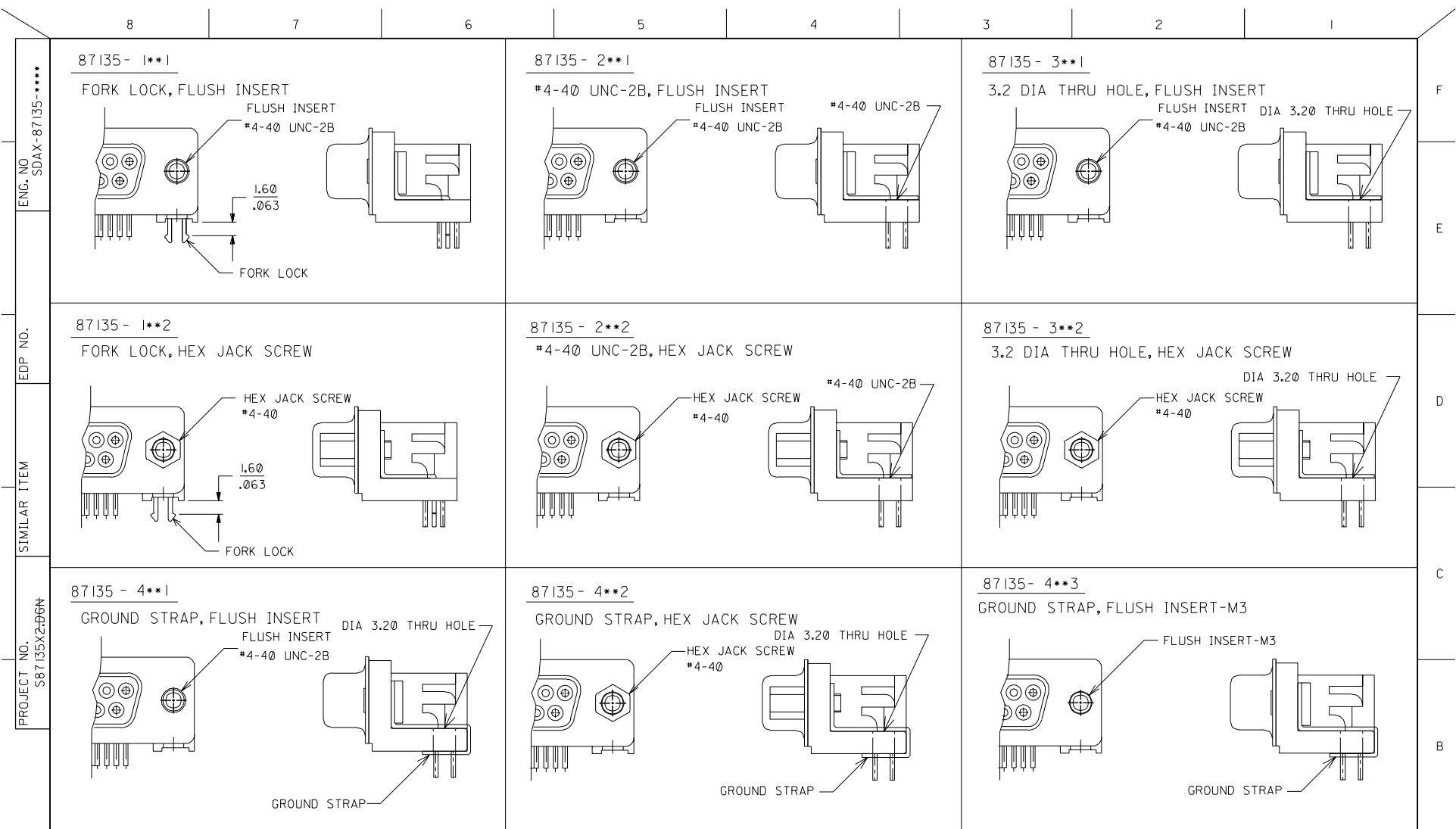


RECOMMENDED PCB LAYOUT



PART NUMBER	CKT SIZE	DIM A	DIM B	DIM C	DIM D	DIM E
AX-87135-0**	9	$30.89 / 1.216$	$24.99 / .984$	$16.33 / .643$	$10.96 / .431$	$7.02 / .276$
AX-87135-1**	15	$39.10 / 1.539$	$33.32 / 1.312$	$24.66 / .971$	$19.18 / .755$	$7.07 / .278$
AX-87135-3**	25	$53.09 / 2.090$	$47.04 / 1.852$	$38.38 / 1.511$	$33.24 / 1.309$	$6.90 / .272$
AX-87135-4**	37	$69.40 / 2.732$	$63.50 / 2.500$	$54.84 / 2.159$	$49.86 / 1.963$	$6.82 / .269$

MATERIAL : AS ABOVE		MOLEX F.E.M.L South SHEET 1 OF 3	
6 DESIGN TRANSFER MX-TAIWAN JACK 921023	FINISH : --	GENERAL TOLERANCES ANGLE : $\pm 1^\circ$ DIM : $\pm .25 / .010$	
5 ADD -***4, PER S1490 JDK 910313	WIRE RANGE : --	ENG. NO. SDAX-87135-*****	REV 6
4 ADD BASE PLATE, S0353 JDK 900220	INS. RANGE : --	TITLE : D-SUB EUROPEAN FOOTPRINT, FEMALE, METAL SHELL	
3 REVISED PER EEO* 95162 SK JDK 5/30	DATE 10/1	SCALE 2:1	
2 REVISED PER ERO *95012 SK JDK 13/12	DRAWN BY SUSAN 13/12/88	CHK'D BY JDK 88/12/28	
1 X-REL PER ERO *85270 SK JDK 13/12	APPR'D BY AB 88/12/29		
LTR REVISION RECORD	DR CHK DATE		
REVISE ONLY ON CAD SYSTEM			



ENG. NO. SDAX-87135-****

EDP NO.

SIMILAR ITEM

PROJECT NO. S87135X2-B0N

DO NOT SCALE DRAWING

			MATERIAL :		MOLEX F.E.M.L South	
			FINISH :		SHEET 2 OF 3	
			WIRE RANGE :		GENERAL TOLERANCES ANGLE : ± 1° DIM : ± .25/.010	
			INS. RANGE :		ENG. NO. SDAX-87135-**** REV 6	
6	SEE SHEET 1		DRAWN BY SUSAN 19/12/88		TITLE : D-SUB EUROPEAN FOOTPRINT, FEMALE, METAL SHELL	
5	SEE SHEET 1		CHK'D BY			
LTR	REVISION RECORD	DR CHK	DATE	APPR'D BY	SCALE	2:1
REVISE ONLY ON CAD SYSTEM						