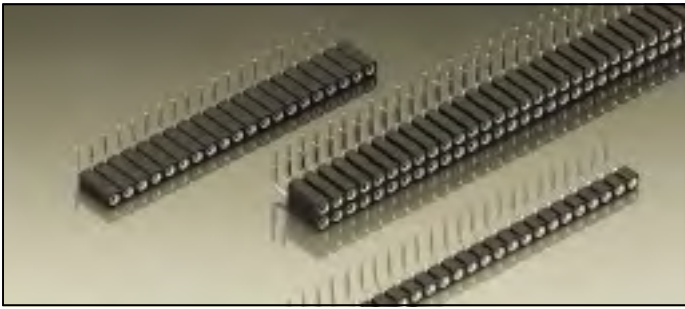


Series 800

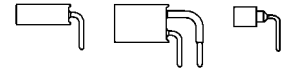
PCB connectors 2.54 mm

Single row / double row

Solder tail



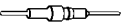


Right angle receptacles, solder tail



Receptacles accept square pins \square 0.635 mm and round pins \varnothing 0.70–0.80 mm

For corresponding receptacle connectors see pages 30 to 35

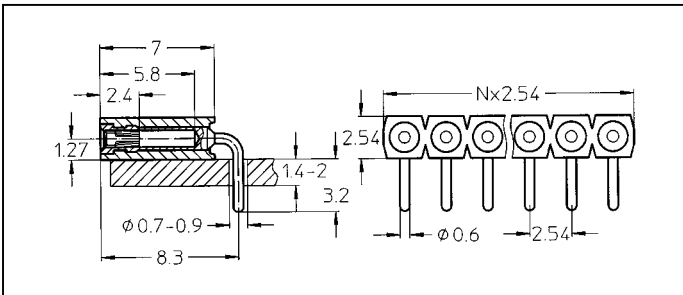
Platings	Sleeve 	Clip 	Pin 
91	5 μ m Sn Pb	0.25 μ m Au	
93	5 μ m Sn Pb	0.75 μ m Au	
99	5 μ m Sn Pb	5 μ m Sn Pb	

Ordering information

Replace **xxx** with the number of poles, e.g. 803-91-**xxx**-20-001 for a double row version with 8 pins per row becomes: 803-91-**016**-20-001

Option:

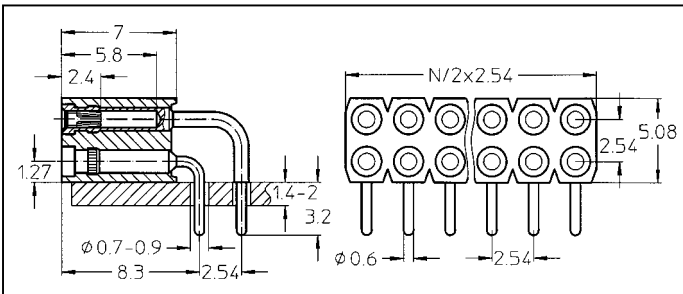
Triple row right angle receptacles on request



- 801-91-xxx-20-001
- 801-93-xxx-20-001
- 801-99-xxx-20-001

Right angle receptacle: solder tail, single row

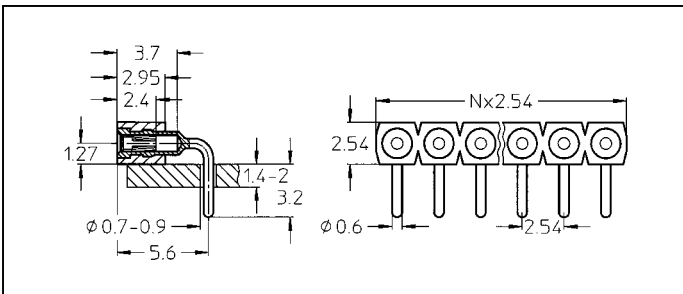
Availability from: 1 to 50 contacts
Standard number of contacts 24, 28, 29, 30, 36, 42, 48, 50



- 803-91-xxx-20-001
- 803-93-xxx-20-001
- 803-99-xxx-20-001

Right angle receptacle: solder tail, double row

Availability from: 4 to 100 contacts
Standard number of contacts 72 and 100



- 801-91-xxx-20-002
- 801-93-xxx-20-002
- 801-99-xxx-20-002

Right angle short receptacle: solder tail, single row

Availability from: 1 to 64 contacts
Standard number of contacts: 64

Right angle short receptacle: solder tail, double row available on request
Please consult