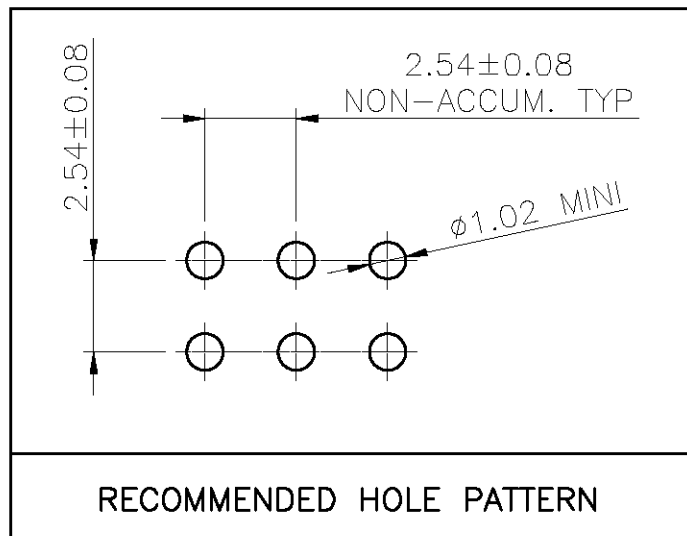
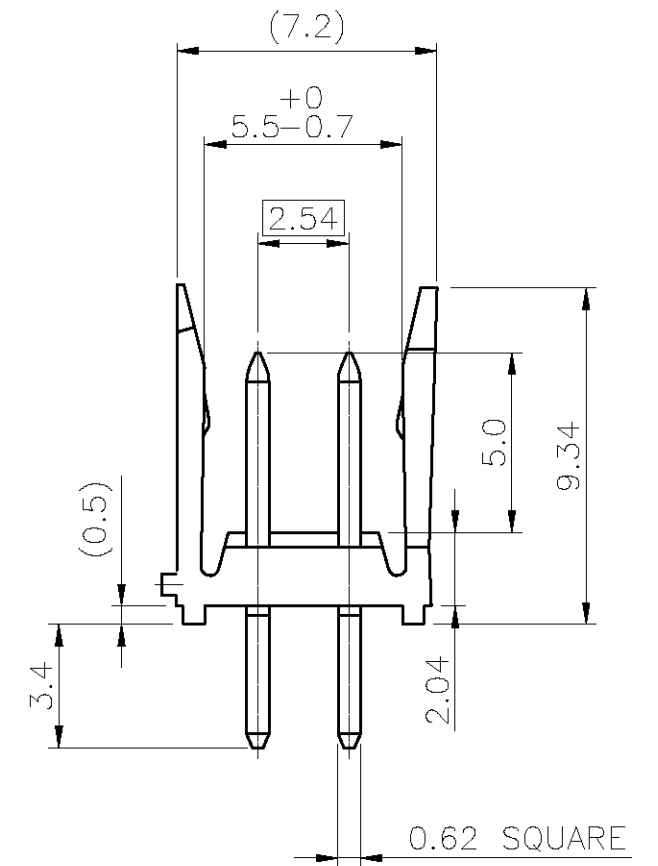
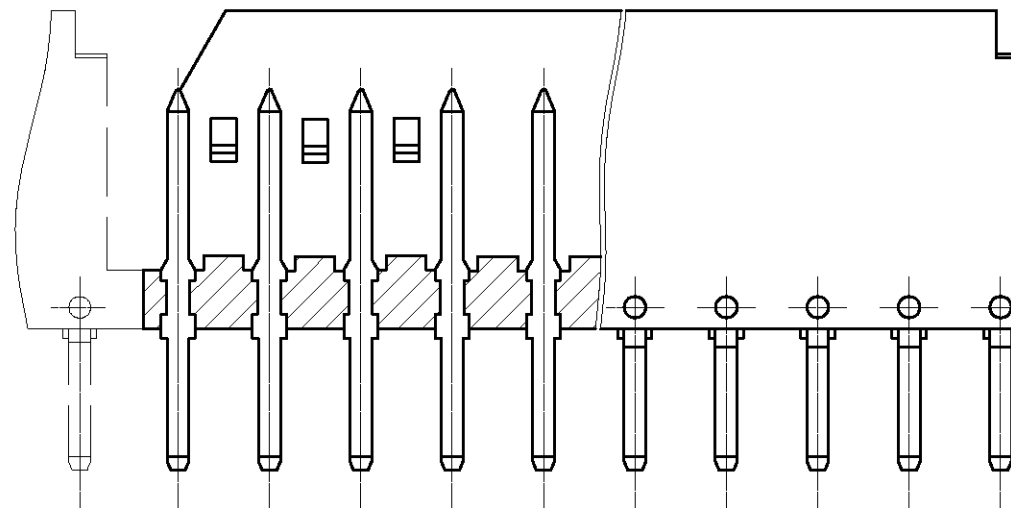
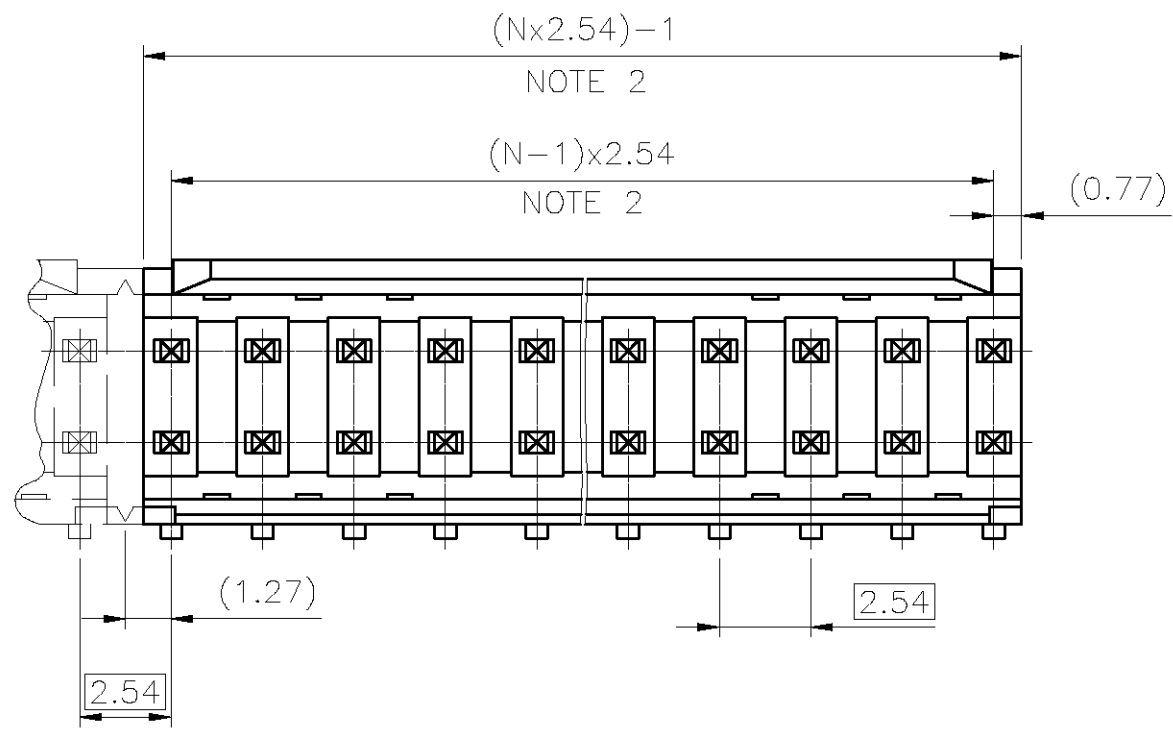


PRODUCT NUMBER
SEE SHEET 2

NOTES :

1. MINI PUSH-OUT FORCE TERMINAL IN BOTH DIRECTIONS 22N.
2. TO DETERMINE DIMENSIONS:
N = NUMBER OF POSITIONS PER ROW
EXAMPLE: 8 POS: $(N \times 2.54) - 1 = 19.32$ mm



mat'l. code SEE NOTES		surface ISO 1302 ✓		tolerance ISO 406 ISO 1101		projection mm		product family DUBOX	
ltr	ecn no	dr	date	tolerances unless otherwise specified		mm		title SHR. HEADER STR DR TMT	
P	F07-0220	JCO	07.06.14	angles	.X ±0.3	scale 5:1		dwg no 76385	
R	F08-0147	YOV	08.04.14	linear	.XX ±0.15	FCJ		sheet 1 of 2	
					.XXX ±0.05			size A3	
K	F05-0159	LMU	05.03.31	dr	G CORBOZ	01.01.12		type CUSTOMER Drawing	
L	F06-0106	LMU	06.01.12	enr	P NIZZI	01.01.12			
M	F06-0228	LMU	06.07.11	chr	D LEGRAND	01.01.12			
N	F07-0147	LMU	07.03.01	appd	P N	01.01.12			
sheet index	revision	R	F						
	sheet	1	2						

STANDARD PRODUCT NUMBER

76385-YXX

NUMBER OF POSITIONS PER ROW: 02 TO 18

PLATING CODE

- 3= 0.76µm GOLD/GXT ON CONTACT AREA.
3.81µm TIN-LEAD ON TAIL.
- 4= 5µm TIN-LEAD ON CONTACT AREA.
3.81µm TIN-LEAD ON TAIL.

NOTES:

- 1 - HOUSING MAT'L: THERMOPLASTIC GLASS FILLED
FLAME RETARDANT PER UL 94 V-O COLOR: BLUE.
- 2 - TERMINAL MATERIAL: COPPER ALLOY.
- 3 - 2 UP TO 6 POSITIONS PER ROW, PRODUCT PACKED IN PLASTIC BAG.
7 UP TO 18 POSITIONS PER ROW, PRODUCT PACKED IN TUBE.
- 4 - ONLY DASH NUMBER -X02 AND -X03
ALWAYS TEN (10) PRODUCTS MOLDED ASSEMBLY
& DELIVERED ON STRIP ACCORDING PHANTOM LINES.

RoHs COMPLIANT PRODUCT NUMBER

76385-YXXLF

SUFFIX LETTER "LF" INDICATES THE PRODUCT IS RoHs COMPLIANT, SEE NOTE 5

PLATING CODE

- 3= 0.76µm GOLD/GXT ON CONTACT AREA.
2µm MIN MATTE TIN ON TAILS.
OVER 1.27µm Ni MIN
- 4= 2µm MIN MATTE TIN
OVER 1.27µm Ni MIN

NOTES:

- 1 - HOUSING MAT'L: THERMOPLASTIC GLASS FILLED
FLAME RETARDANT PER UL 94 V-O COLOR: BLACK.
- 2 - TERMINAL MATERIAL: COPPER ALLOY.
- 3 - 2 UP TO 6 POSITIONS PER ROW, PRODUCT PACKED IN PLASTIC BAG.
7 UP TO 18 POSITIONS PER ROW, PRODUCT PACKED IN TUBE.
- 4 - ONLY DASH NUMBER -X02 AND -X03
ALWAYS TEN (10) PRODUCTS MOLDED ASSEMBLY
& DELIVERED TON STRIP ACCORDING PHANTOM LINES.
- 5 - RoHS COMPATIBLE PRODUCT SPECIFICATIONS
 - a - PLATING:
 - "LF" MEANS THE PRODUCT IS LEAD-FREE,
2µm MINIMUM MATTE TIN OVER 1.27µm
MINIMUM NICKEL UNDERPLATE.
 - b - MANUFACTURING PROCESS COMPATIBILITY
 - THE HOUSING WILL WITHSTAND EXPOSURE TO
260°C ±5°C SOLDER BATH TEMPERATURE FOR
5 SECONDS IN A WAVE SOLDER APPLICATION
WITH A 1.6mm MIN THICK CIRCUIT BOARD.
 - c - LABELING:
 - MEETS PACKAGING SPECS AS PER GS-14-920
 - d - LEGAL STATEMENT: SEE GS-22-008



Copyright FCI

mat'l. code		surface		tolerance		projection		product family	
SEE NOTES		ISO 1302 ✓		ISO 406 ISO 1101		mm		DUBOX	
ltr	ecn no	dr	date	tolerances unless	otherwise specified	mm		title	
A	F05-0159	LMU	05.03.31	angles	.X ±0.3	mm		SHR. HEADER	
B	F06-0106	LMU	06.01.12	linear	.XX ±0.15	mm		STR DR TMT	
C	F06-0228	LMU	06.07.11		.XXX ±0.05	scale 5:1			
D	F07-0147	LMU	07.03.01	dr	L.MULIN 05.03.31	FCI		dwg no	
E	F07-0220	JCO	07.06.14	engr	J.COMPAGNON 05.03.31			sheet 2 of	
F	F08-0147	YOV	08.04.14	chr				76385	
				appd	JM.C 05.03.31			size	
								A3	
sheet index		revision sheet						type	
								CUSTOMER Drawing	