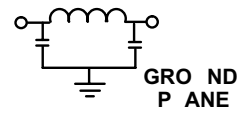
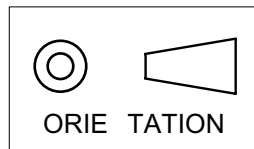


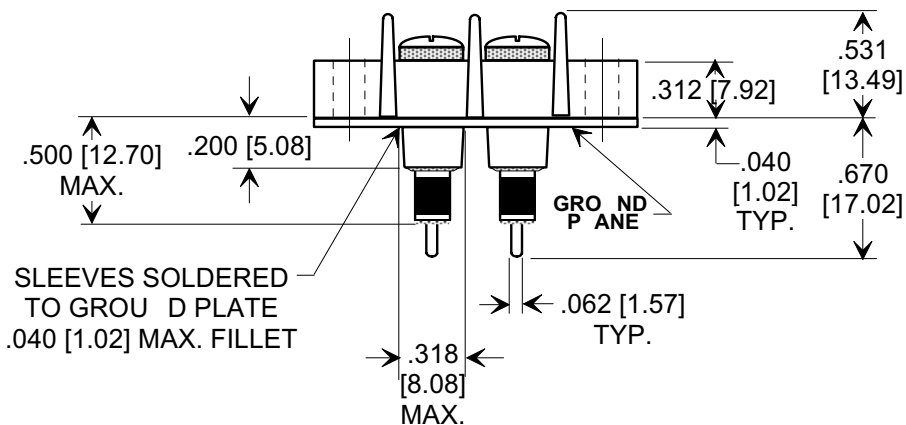
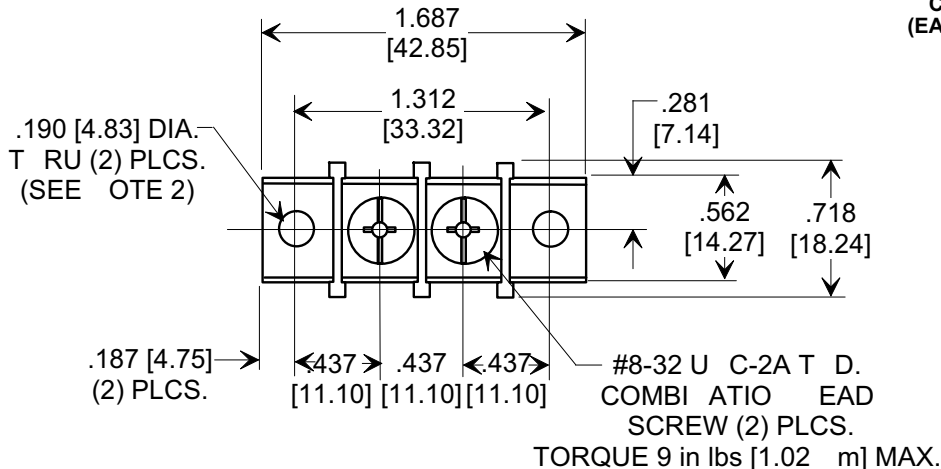
MARKETI G SALES DRAWI G

DIME SIO SI I C ES - DO OT SCALE T IS DRAWI G
 DIME SIO SI METRIC - []

Electrical Testing
 per Tusonix standard
 test plans and Mil-Std-202
 Test Methods.



CIRC IT
(EACH INE)



OTES:

1. MAX. SOLDERI G TEMPERATURE 500°F [260°C].
2. BLOCK MOU TI G: RECOMME DED MOU TI G SCREWS (# 8 PA EAD). TORQUE 5 in. lbs. [0.56 m] MAX.

Cx (pF)	WORKING VOLTAGE -40°C TO +125°C	I _{DC}	I.R. MIN. @ 100 (VDC.)	DWV (VDC)	TYPICAL NO OAD INSERTION OSS (dB) @ 25°C PER MIL-STD-220			
					10 MHz	100 MHz	1 GHz	10 GHz
5000/2500	250 VAC	20 Amps	10 G Ω	900	5	50	60	65

REVISIO RECORD	0	Title FI TERED TERMINA B OCK 2 POSITION	TOLERA CES unless otherwise specified
	1		2 PLC. DECIMAL ± N/A
	2		3 PLC. DECIMAL ± .030 [0.76]
	3		A GLES ± N/A
4	Drawn E.C. 04-20-94	Scale F	Approved B.M. 04-20-94
5	Approved B.M. 04-20-94		
6	A	7602-000	
7	TUSONIX TUCSO , ARIZO A		
8			