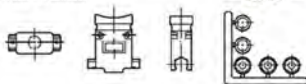


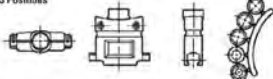
D-Sub Die Cast Metal Hoods

9 and 15 Positions

— NEW —



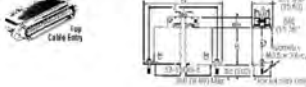
25 Positions



Heavy-duty, two piece die-cast zinc construction with zinc plating including internally packaged with PVC cable grommets allowing for a variety of cable opening diameters. The jack screws are steel with zinc die finish.

Stock No.	Mfr.'s Type	No. of Contacts		Cable Dia. Range		EACH
		Std. D-Sub.	High Density	Min.	Max.	
720-9108	17-1657-09	9	15	0.210	0.320	3.82
720-9102	17-1657-15	15	26	0.210	0.320	4.29
720-9104	17-1657-25	25	44	0.250	0.450	4.70
720-9106	17-1657-37	37	62	0.350	0.650	5.99
720-9108	17-1657-50	50	78	0.350	0.650	6.94

57-Series Connectors — Shielded



Mated Plug and Receptacle

Copper alloy contacts, selectively plated gold-over-copper for excellent current carrying characteristics. UL94 V0 rated dialyl phthalate dielectric per MIL-M-46 Type MDG, for operation at up to 700 volts DC (sea level) without arcing or flashover. Zinc-plated steel outer shell, with clear chromate finish, for corrosion resistance. Trapezoidal shape shell assures correct polarity. Current Capacity: 5 amps per contact. Voltage Rating: 700 volts DC at sea level. Operating Temperature: -55°C to +150°C (-65°F to +122°F). Wire Sizes: Solid — 22 gauge, max.; Stranded — 24 gauge, maximum.

Plugs — Top Cable Entry

Zinc plated shells for screw locking.

Stock No.	Mfr.'s Type	No. of Contacts	EACH	
			1-49	50-99
720-1752	57-33500-1	50	7.14	5.85

Cable-to-Panel Connectors

Plugs with top cable entry. Receptacles with spring latches.

Stock No.	Mfr.'s Type	Description	EACH	
			1-49	50-99
720-1722	57-30140	14-Contact Plug	5.56	4.50
720-1725	57-40140	14-Contact Receptacle	4.16	3.54
720-1723	57-30240	24-Contact Plug	4.43	4.62
720-1727	57-40240	24-Contact Receptacle	4.26	3.62
720-1724	57-30360	36-Contact Plug	3.84	3.96
720-1728	57-40360	36-Contact Receptacle	4.90	4.17
720-1725	57-30500	50-Contact Plug	6.63	6.84
720-1729	57-40500	50-Contact Receptacle	5.46	4.64

Cable-to-Cable Connectors

Stock No.	Mfr.'s Type	Description	EACH	
			1-49	50-99
720-1708	57-10500-7	50-Contact Plug	7.99	5.80
720-1719	57-20500-7	50-Contact Receptacle	7.67	6.21

Rack and Panel Connectors — Shielded



Rack and Panel Connectors

Rack and Panel Connectors Fix-Mounted Plugs and Float-Mounted Receptacles

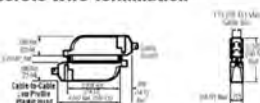
0.103" mounting hole (except #3 screw — not included).

Stock No.	Mfr.'s Type	Description	EACH	
			1-49	50-99
720-1658	57-10140	14-Contact Plug	3.33	2.73
720-1670	57-20140	14-Contact Receptacle	3.88	3.39
720-1682	57-10240	24-Contact Plug	2.97	2.40
720-1672	57-20240	24-Contact Receptacle	4.23	3.42
720-1684	57-10360	36-Contact Plug	3.98	3.39
720-1674	57-20360	36-Contact Receptacle	5.72	4.69
720-1686	57-10500	50-Contact Plug	4.41	3.75
720-1676	57-20500	50-Contact Receptacle	5.28	4.49

Top Cable Entry Receptacles with Spring Latches

Stock No.	Mfr.'s Type	Description	EACH	
			1-49	50-99
720-1735	57-60140	14-Contact Receptacle	7.22	6.69
720-1737	57-60240	24-Contact Receptacle	6.58	5.26
720-1739	57-60360	36-Contact Receptacle	8.32	7.19
720-1741	57-60500	50-Contact Receptacle	7.85	6.68

157 Series I.D.C. Discrete Wire Termination



Current Capacity: 5 amps per contact. Voltage Rating: 700 VDC at sea level. Operating Temperature: -67°F to +221°F (-55°C to +105°C). Wire Size: 24 and 26 AWG solid conductor, 26 and 28 AWG stranded conductor. Contacts: Selectively plated 20 μ gold over 50 μ nickel on a copper alloy base. Dielectric: DPT-UL94V0. Shells: Zinc plated steel with clear chromate coating. Trapezoidal shape assures positive polarization.

Cable-to-Cable Connectors Low Profile Metal Front Shell, Plastic Hood

Stock No.	Mfr.'s Type	Description	EACH	
			1-49	50-99
720-5220	157-72500-3 (431)	50-Contact Plug	8.50	7.81
720-5225	157-82500-3 (431)	50-Contact Receptacle	8.50	7.81

All-Plastic Micro-Pierce®

4-40 capriveted screw lapped hole and cable clamp. Dielectric: Fiberglass-filled polyester.

720-5300	157-79500-1 (511)	50-Contact Plug	3.96	3.34
720-5305	157-89500-1 (511)	50-Contact Receptacle	3.08	4.29

Low Profile Steel Hood — Shielded

720-5240	157-72500-3	50-Contact Plug	4.30	3.58
720-5242	157-82500-3	50-Contact Receptacle	4.29	3.58

High Density D-Subminiature Connectors Solder Cup Contacts for 24 AWG Wires

3 rows of contacts. Contact Plating: Gold flash over nickel.

Plugs with Pin (Male) Contacts

Stock No.	Mfr.'s Type	No. of Contacts	Std. D-Sub. Shell Size	EACH	
				1-49	50-99
720-7900	17HD-015P-AA000	15	E	1.21	1.94
720-7904	17HD-026P-AA000	26	A	2.36	1.87
720-7908	17HD-044P-AA000	44	B	2.31	1.99
720-7912	17HD-062P-AA000	62	C	3.50	2.78
720-7916	17HD-078P-AA000	78	D	3.56	4.40

Receptacles with Socket (Female) Contacts

720-7902	17HD-015S-AA000	15	E	1.40	1.08
720-7906	17HD-026S-AA000	26	A	2.70	2.15
720-7910	17HD-044S-AA000	44	B	3.19	2.83
720-7914	17HD-062S-AA000	62	C	3.81	3.01
720-7918	17HD-078S-AA000	78	D	6.13	4.86

All-Plastic Micro-Pierce® Connectors

Current Capacity: 5 A per contact. Voltage Rating: 700 VDC at sea level. 200 VDC at 70,000 ft. Wire: 24 and 26 AWG solid conductor, 26 and 28 AWG stranded conductor. Dielectric: Fiberglass-filled polyester. Contacts: 20 micronsches gold over 50 micronsches nickel on a copper alloy base.



Plug

Stock No.	Mfr.'s Type	Description	EACH	
			1-49	50-99
720-5320	157-19500-2	0.125" Thru Holes-50 Contact	3.49	2.85

Receptacles

720-5325	157-29500-2	0.125" Thru Holes-50 Contact	2.82	2.29
720-5330	157-29500-4	0.125" Thru Holes-50 Contact with Spring Clips	5.36	4.42

Tools for 157 Series

Stock No.	Mfr.'s Type	Description	EACH	
			1-49	50-99
720-8006	356-251	Insertion/Repair Tool	286.85	
720-8335	356-157	Impact Tool Kit	291.43	

DIN 41 612 Two Piece PCB Connectors



E63093 LR48R32-4, 5

0.100" grid contact and termination spacing. Interchangeable and interchangeable with other industry two-piece printed circuit Eurocard types. Materials: UL94V0 high temperature, solvent resistant thermoplastic. PBT reinforced, UL94V0 approved. Contacts: Male — brass; female — phosphor bronze. Current: 1 A. Voltage: 250 VAC, 300 VDC. Wire Size: 28 AWG max.

"B" Style — 2 Contact Rows

Stock No.	Mfr.'s Type	Description	EACH	
			1-49	50-99
720-5500	705-C133-714A-64P	64 Pos. Plug	3.28	2.68
720-5505	705-C143-012A-68S	64 Pos. Receptacle	4.49	3.78

"1/2" Style — 3 Contact Rows

720-5520	705-C133-714A-48P	48 Pos. Plug	2.43	2.06
720-5525	705-C143-012A-48S	48 Pos. Receptacle	4.00	3.45

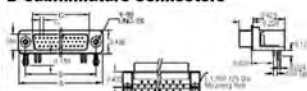
"C" Style — 3 Contact Rows

720-9993	705-C133-714A-96P	96 Pos. Plug	3.91	3.19
720-9545	705-C143-012A-96S	96 Pos. Receptacle	6.02	5.05

"R" Style — Inverted 3 Rows

720-9560	706-C143096M-11A-004	Vertical, 96 Pos.	3.82	3.22
720-9565	706-C143096F-23A-004	Right Angle, 96 Pos.	5.43	4.47

High Density, Right Angle, PC Mount D-Subminiature Connectors



Front metal shell, 0.350" footprint, fixed contact, 3 rows of contacts (15, 26, 44, 62 positions). Materials: Dielectric — Black thermoplastic, UL94V0. Shell — Tin plated steel. Contacts — Copper alloy. Contact Plating — 0.000050" nickel on the entire contact, 0.000150" lead on the termination end; gold flash in the engagement area. Current Rating: 5 A maximum per contact. Voltage Rating: 125 VAC.

PCB Mount Option: Clear hole, panel mount option — 4-40 threaded hole. Receptacles only.

Stock No.	Mfr.'s Type	No. of Contacts	Shell Size	EACH	
				1-49	50-99
720-7924	17BH-015S-AA100	15	E	1.79	1.46
720-7928	17BH-026S-AA110	26	A	5.17	4.22
720-7932	17BH-044S-AA100	44	B	6.42	5.14
720-7936	17BH-062S-AA110	62	C	7.73	6.10

PCB Mount Option: Arrowhead boardlock, panel mount option — 4-40 threaded hole.

720-7926	17BH-015S-AA110	15	E	1.92	1.57
720-7930	17BH-026S-AA110	26	A	5.31	4.33
720-7934	17BH-044S-AA110	44	B	6.58	4.26
720-7938	17BH-062S-AA110	62	C	7.88	6.30