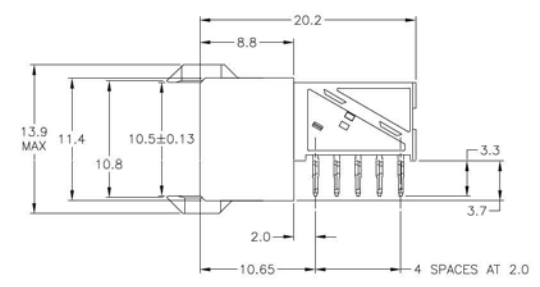
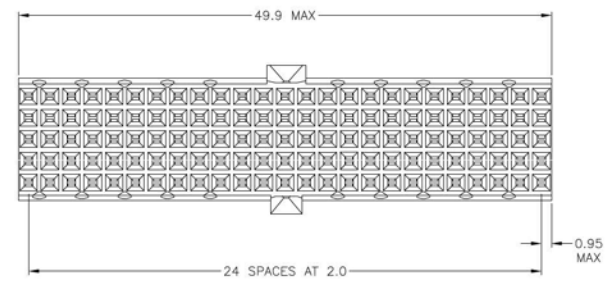
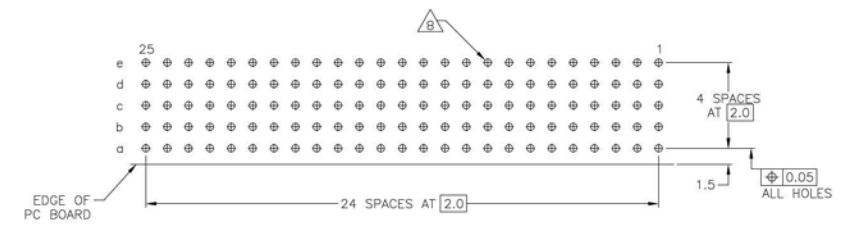


SECTION A-A



- 1 MATERIAL:  
CONTACT: PHOSPHOR BRONZE.  
HOUSING: GLASS-FILLED POLYESTER.
- 2 GENERAL PLATING SPECIFICATION: UNDERPLATING  
(ENTIRE CONTACT): 1.27µm MIN NICKEL AND ACTION  
PIN: 0.5µm MIN TIN.  
FOR PLATING OF MATING SURFACES SEE APPLICABLE  
SPECIFICATION REFERENCE FOR EACH DASH NUMBER.
- 3 CONFORMS TO ALL TESTING ACCORDING TO IEC 61076-4-101  
PERFORMANCE LEVEL 2.
- 4 CONFORMS TO ALL TESTING ACCORDING TO IEC 61076-4-101  
PERFORMANCE LEVEL 1.
- 5 CONNECTOR TESTED AND QUALIFIED AGAINST TELCORDIA GR-1217-CORE QUALITY LEVEL 3,  
CENTRAL OFFICE APPLICATIONS.
- 6 CONNECTOR TESTED AND QUALIFIED AGAINST TELCORDIA GR-1217-CORE QUALITY LEVEL 3,  
UNCONTROLLED ENVIRONMENT APPLICATIONS.
- 7 CONNECTOR MARKED WITH PART NUMBER AND DATE CODE.  
ADDITIONAL CHARACTERS OR MARKINGS, AS WELL AS THE LOCATION OF THE MARKINGS,  
MAY BE ADDED FOR TRACEABILITY BASED UPON MANUFACTURERS DISCRETION.
- 8 HOLE PATTERN FOR FEMALE CONNECTOR TYPE A/B 125 PLATED-  
THROUGH HOLES AT 2x2mm SQUARE GRID.
- 9 CONNECTOR LUBRICATED WITH BELLCORE APPROVED LUBRICANT.  
TECHNICAL REFERENCE TR-NWT-001217 ISSUE 1, SEPT 1992.



PCB HOLE DIM ACTION PIN  
FOR DETAILS SEE  
APPLICATION SPECIFICATION

RECOMMENDED PCB LAYOUT  
(COMPONENT SIDE AS SHOWN)

1-5646574-9	
5646574-9	
5646574-4	
5646574-1	
FINISH	PART NUMBER

THIS DRAWING IS A CONTROLLED DOCUMENT.		SW B CASBIO 11MAY05	Tyco Electronics Corporation Harrisburg, PA 17105-3608
DIMENSIONS: mm		GR G SKIPPY 11MAY05	
0 RLC A - 1 RLC A - 2 RLC B - 3 RLC B - 4 RLC B -		PRODUCT SPEC: 108-19082 APPLICATION SPEC: 114-19029	RECEPTACLE ASSEMBLY, Z-PACK Z-PACK 2mm HM, TYPE A/B
MATERIAL: 1		APPC 11MAY05	SIZE: A1 DATE CODE: 00779 DRAWING NO: 5646574
FINISH: SEE TABLE		CUSTOMER DRAWING	RESTRICTED TO: --- SCALE: 4:1 SHEET: 1 OF 1 REV: A