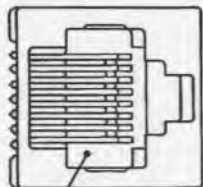
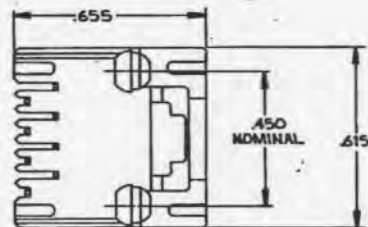
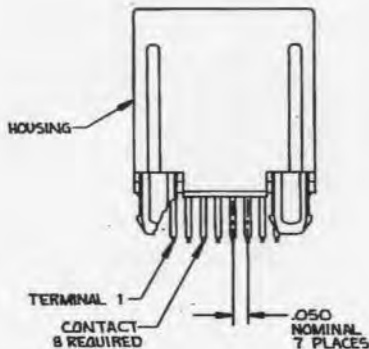
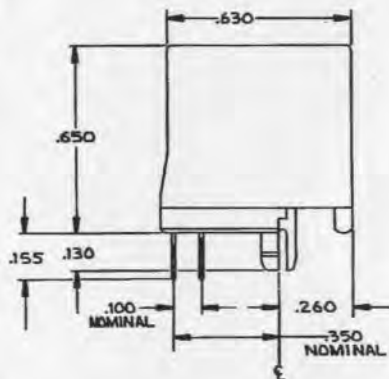


THIS DRAWING IS UNPUBLISHED. RELEASED FOR PUBLICATION
 © COPYRIGHT 1989 BY AMP INCORPORATED, HARRISBURG, PA. ALL INTERNATIONAL RIGHTS RESERVED. AMP PRODUCTS MAY BE COVERED BY U.S. AND FOREIGN PATENTS AND/OR PATENTS PENDING.

LOC	DIST	ZONE	LTR	REVISIONS	DATE	APPO
AA	22			B	REVISED: ECN AA-8120	3-24-92



△



- △ MATERIAL: HOUSING-PBT POLYESTER, BLACK. TERMINAL-.0138 THICK PHOS BRONZE PLATED WITH .0050 THICK HARD GOLD IN LOCALIZED GOLD PLATE AREA AND .00080 THICK TIN-LEAD IN SOLDER AREA OVER .00050 THICK NICKEL UNDERPLATE.
- △ CAVITY CONFORMS TO FCC RULES AND REGULATIONS PART 68 AND REA BULLETIN 345-81, PE-76 SPECIFICATION FOR MODULAR TELEPHONE HARDWARE.
3. FOR APPLICATION INFORMATION SEE AMP SPECIFICATION 114-2048.
4. FOR PERFORMANCE REQUIREMENTS SEE AMP SPECIFICATION 108-1163.
5. ALL DIMENSIONS SHOWN ARE MAXIMUM UNLESS OTHERWISE SPECIFIED.
- △ BULK PACKAGED IN A TRAY.
- △ PACKAGED 30 PER TUBE.

△	556416 -2
△	556416 -1
PACKAGED	PART NO

UNLESS OTHERWISE SPECIFIED DIMENSIONS ARE IN INCHES		DR <i>Silvaco</i> 3-8-89		AMP AMP INCORPORATED Harrisburg, Pa. 17105	
TOLERANCES ON		CIR <i>STP</i> 3-13-89		NAME MODULAR JACK ASSEMBLY, TOP ENTRY, 8 POSITION, FLANGELESS, W/O PANEL STOPS	
2 PL DEC ± —		APPO <i>Gene Reed</i> 3-13-89		SIZE FSCM NO DRAWING NO	
3 PL DEC ± —		APPO <i>Gene Reed</i> 3-13-89		C 00779 556416	
ANGLES ± —		PRODUCT SPEC		SCALE 4:1 SHEET 1 of 1	
MATERIAL		APPLICATION SPEC		WEIGHT	
△		FINISH		△	