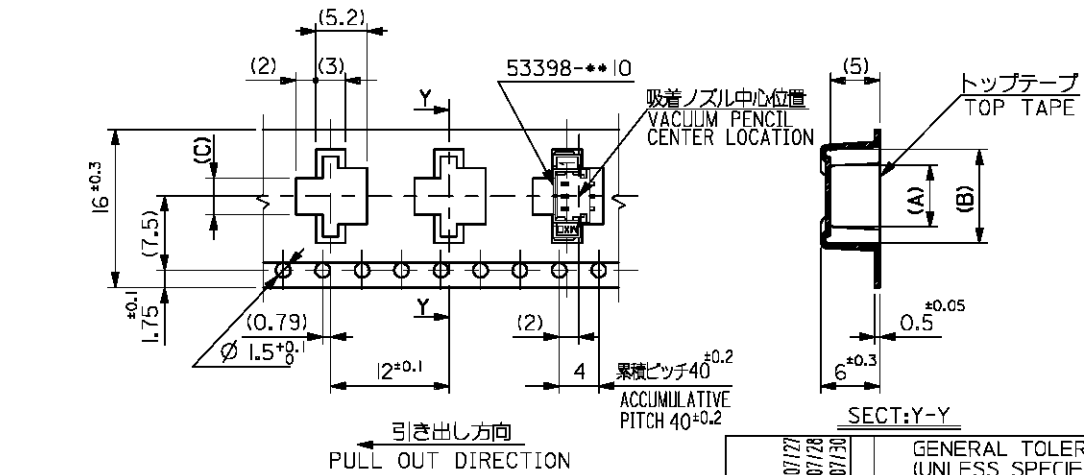


DETAIL 'F'



SECT:Y-Y

16幅テープ (TAPE WIDTH:16)

NOTES

1. 梱包数量: 1000個/リール
NUMBER OF CONNECTOR: 1000PCS/REEL
2. リードテープ長さ
LEAD TAPE LENGTH
トップテープ未接着部 TOP TAPE NON-BONDED PART 25±10
空インボス 20~25PCS. NUMBER OF EMPTY PART
部品挿入部 COMPONENT SUPPLIER
末端部 (空部) TAIL PART (EMPTY) 360±35
480±80
引き出し方向 PULL OUT DIRECTION
3. トップテープの剥離強度: 0.6±0.35N(60±35gf) (剥離方向は下図参照)
PEELING OFF FORCE OF TOP TAPE: 0.6±0.35N(60±35gf)
(PEELING DIRECTION IS SHOWN IN FOLLOWING FIG.)
<剥離速度: 300mm/mIn (参考)>
PEELING SPEED: 300mm/mIn. (REFERENCE)
引き出し方向 PULL OUT DIRECTION
剥離方向 PEEL OFF DIRECTION 10°
4. 53398-**10 の詳細寸法については図面 SD-53398-**10 を参照下さい。
RE DETAILED DIMENSIONS, SEE SD-53398-**10.
5. 材料 (MATERIAL)
キャリアテープ (CARRIER TAPE): ポリプロピレン (POLYPROPYLENE)
トップテープ (TOP TAPE): PET, PE, PEF
リール (REEL): ポリスチレン (P.S) <リサイクル材含む>
POLYSTYREN (PS) <RECYCLE MATERIAL CONTAINED>

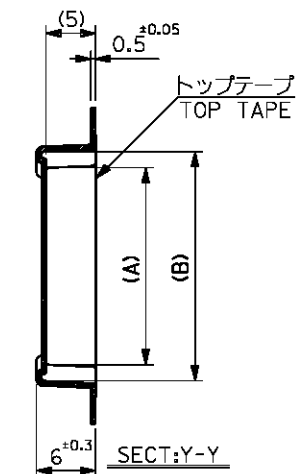
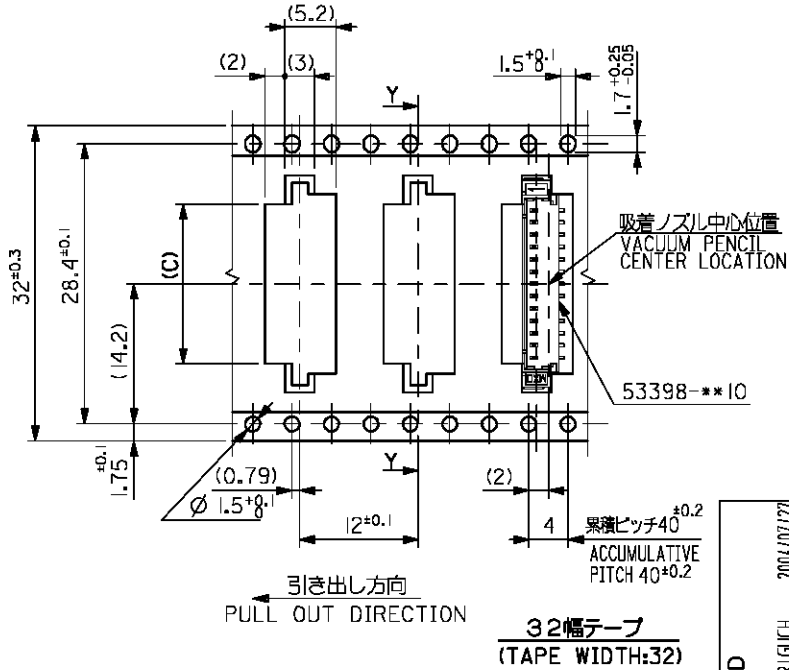
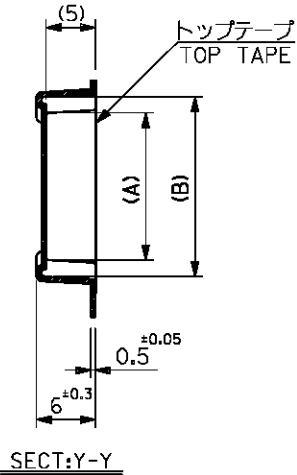
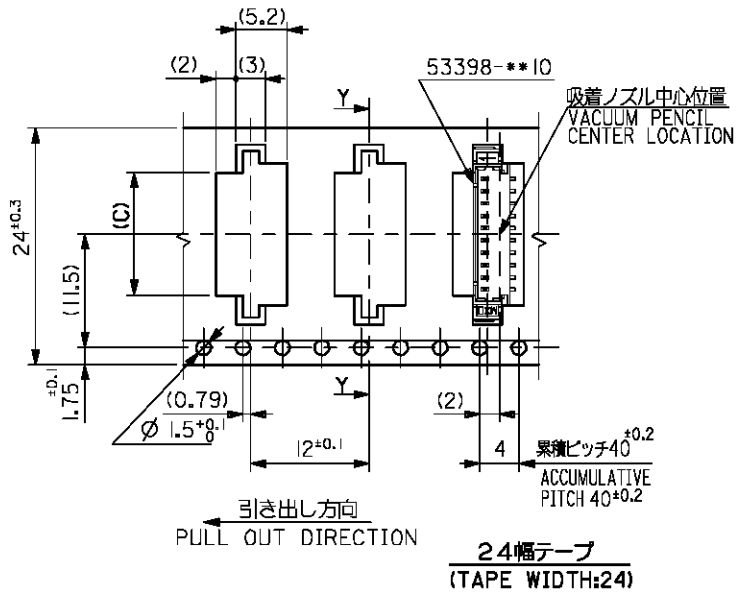
16	17.4	3.7	9.5	5.8	53398-0390	3
キャリアテープ幅 CARRIER TAPE WIDTH	D	(C)	(B)	(A)	53398-0290	2
		2.45	8.25	4.55	ENG. NO.	種数 CKT.

REVISED EC NO: DRAWN: M. I. GUCH CHKD: K. ASAKAWA APPR: S. ICHIKAWA REV	DESCRIPTION 2004/07/17 2004/07/26 2004/07/30	GENERAL TOLERANCES (UNLESS SPECIFIED)		DIMENSION STYLE	SCALE	DESIGN UNITS	THIRD ANGLE PROJECTION	
				MM ONLY	---	METRIC		
		10 UNDER	±0.2	DRAWN BY	DATE	TITLE		
		10 OVER 30 UNDER	±0.25	K. TOJO	'93/04/13	1.25 W/B CONN. WAFER ASS'Y FOR SMT. EMBOSSED TAPE PACKAGE		
30 OVER	±0.3	CHECKED BY	DATE	MOLEX INCORPORATED				
ANGULAR	±3 °	YAMAGUCHI	'00/12/08	APPROVED BY				
DRAFT WHERE APPLICABLE MUST REMAIN WITHIN DIMENSIONS		FUKUSHIMA	'00/12/08	DATE				
		MATERIAL NO.	SEE CHART	DOCUMENT NO.		SHEET NO.		
		SIZE	A3	SD-53398-**90		1 OF 3		
THIS DRAWING CONTAINS INFORMATION THAT IS PROPRIETARY TO MOLEX INCORPORATED AND SHOULD NOT BE USED WITHOUT WRITTEN PERMISSION								

10 9 8 7 6 5 4 3 2 1

F
E
D
C
B
A

F
E
D
C
B
A



32	33.4	16.2	22	18.3	53398-1390	13
		4.95	20.75	17.05	-1290	12
24	25.4	3.7	19.5	15.8	-1190	11
		2.45	18.25	14.55	-1090	10
		11.2	17	13.3	-0990	9
		9.95	15.75	12.05	-0890	8
		8.7	14.5	10.8	-0790	7
		7.45	13.25	9.55	-0690	6
		6.2	12	8.3	-0590	5
		4.95	10.75	7.05	53398-0490	4
キャリアテープ幅 CARRIER TAPE WIDTH	D	(C)	(B)	(A)	ENG. NO.	種数 CKT.

REVISED EC NO: DRAWN:MERIGUCHI CHKD:K. ASAKAWA APPR:SIKIKAWA	2004/07/27	2004/07/28	2004/07/30	GENERAL TOLERANCES (UNLESS SPECIFIED)		DIMENSION STYLE MM ONLY	SCALE ---	DESIGN UNITS METRIC	THIRD ANGLE PROJECTION	
	10 UNDER		±0.2	10 OVER	30 UNDER	±0.25	DRAWN BY K. TOJO	DATE '93/04/13	TITLE 1.25 W/B CONN. WAFER ASS'Y FOR SMT. EMBOSSD TAPE PACKAGE	
	30 OVER		±0.3	ANGULAR		±3 °	CHECKED BY YAMAGUCHI	DATE '00/12/08	APPROVED BY FUKUSHIMA	
	DRAFT WHERE APPLICABLE MUST REMAIN WITHIN DIMENSIONS			SIZE A3	SEE CHART		MATERIAL NO.	DATE '00/12/08	DOCUMENT NO. SD-53398-**90	SHEET NO. 2 OF 3
	THIS DRAWING CONTAINS INFORMATION THAT IS PROPRIETARY TO MOLEX INCORPORATED AND SHOULD NOT BE USED WITHOUT WRITTEN PERMISSION									

10 9 8 7 6 5 4 3 2 1

F

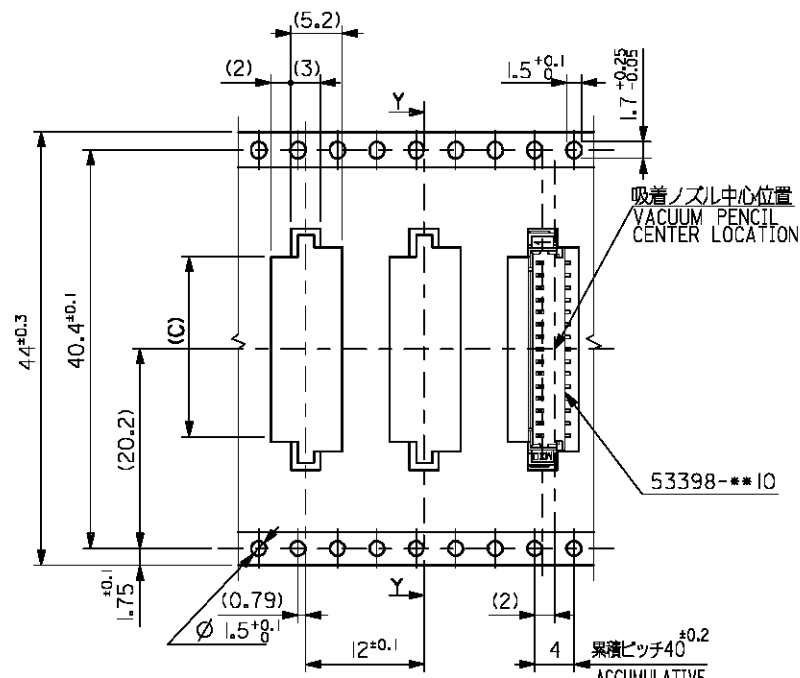
E

D

C

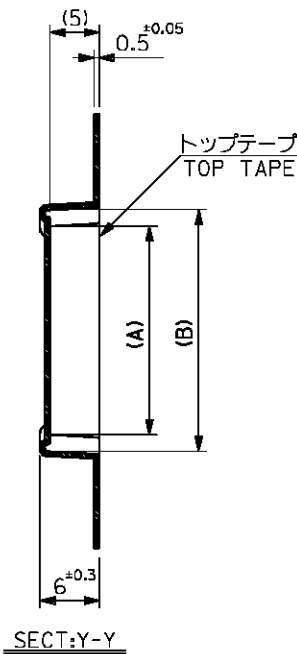
B

A



引き出し方向
PULL OUT DIRECTION

44幅テープ
(TAPE WIDTH:44)



44	45.4	18.7	24.5	20.8	53398-1590	15
キャリアテープ幅 CARRIER TAPE WIDTH	D	(C)	(B)	(A)	ENG. NO.	数量 QTY.
		17.45	23.25	19.55	53398-1490	14

REVISED EC NO: DRAWN:MERIGUCHI CHKD:K. ASAKAWA APPR:SIKIKAWA	2004/07/27 2004/07/28 2004/07/30	GENERAL TOLERANCES (UNLESS SPECIFIED)		DIMENSION STYLE MM ONLY		SCALE ---	DESIGN UNITS METRIC	THIRD ANGLE PROJECTION	
		10 UNDER	±0.2	DRAWN BY K. TOJO	DATE '93/04/13	TITLE 1.25 W/B CONN. WAFER ASS'Y FOR SMT. EMBOSSD TAPE PACKAGE			
		10 OVER 30 UNDER	±0.25	CHECKED BY YAMAGUCHI	DATE '00/12/08	MOLEX INCORPORATED			
		30 OVER	±0.3	APPROVED BY FUKUSHIMA	DATE '00/12/08	DOCUMENT NO. SD-53398-**-90			
ANGULAR ±3 °		DRAFT WHERE APPLICABLE MUST REMAIN WITHIN DIMENSIONS		MATERIAL NO. SEE CHART		SHEET NO. 3 OF 3			
SIZE A3								THIS DRAWING CONTAINS INFORMATION THAT IS PROPRIETARY TO MOLEX INCORPORATED AND SHOULD NOT BE USED WITHOUT WRITTEN PERMISSION	