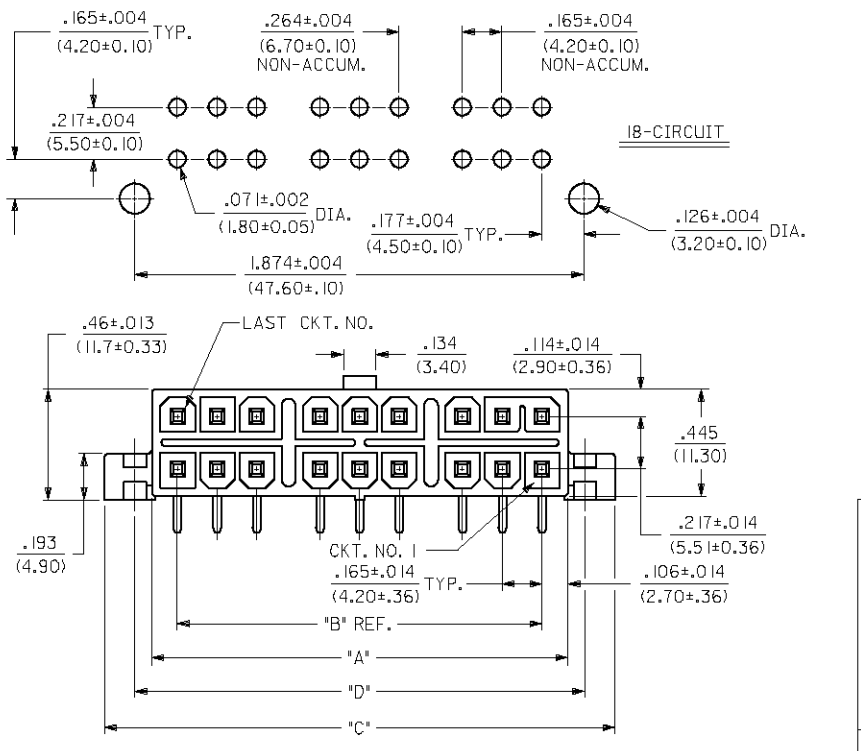
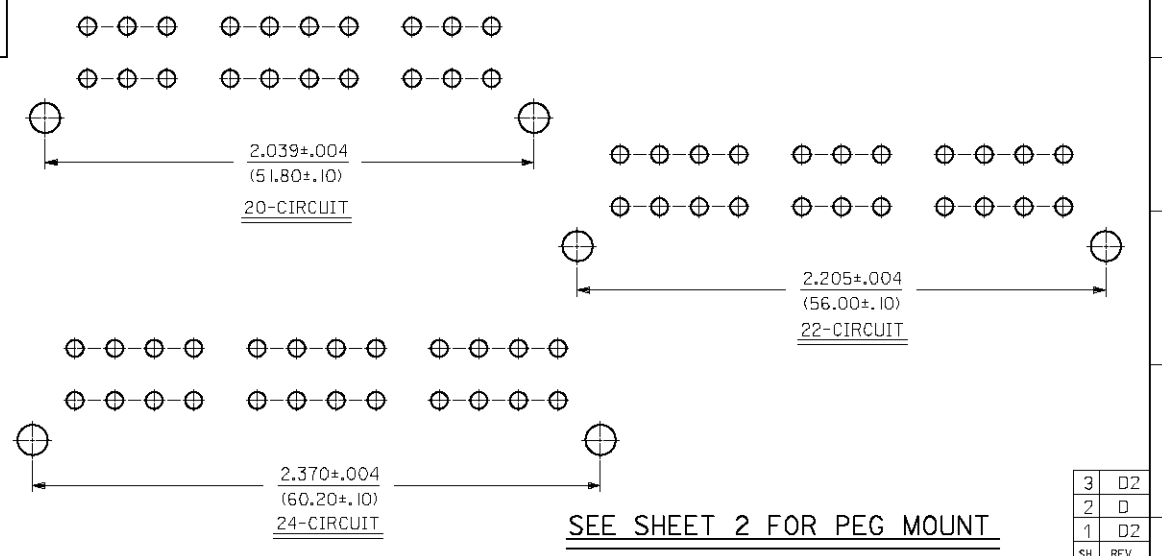


CKT. SIZE	DIM. 'A'	DIM. 'B'	DIM. 'C'	DIM. 'D'
2	.213 (5.40)	—	.606 (15.40)	.354 (9.00)
4	.378 (9.60)	.165 (4.20)	.772 (19.60)	.520 (13.20)
6	.543 (13.80)	.331 (8.40)	.937 (23.80)	.685 (17.40)
8	.709 (18.00)	.496 (12.60)	1.102 (28.00)	.850 (21.60)
10	.874 (22.20)	.661 (16.80)	1.268 (32.20)	1.016 (25.80)
12	1.039 (26.40)	.827 (21.00)	1.433 (36.40)	1.181 (30.00)
14	1.205 (30.60)	.992 (25.20)	1.598 (40.60)	1.346 (34.20)
16	1.370 (34.80)	1.157 (29.40)	1.764 (44.80)	1.512 (38.40)
18	1.732 (44.00)	1.520 (38.60)	2.126 (54.00)	1.874 (47.60)
20	1.898 (48.20)	1.685 (42.80)	2.291 (58.20)	2.039 (51.80)
22	2.063 (52.40)	1.850 (47.00)	2.457 (62.40)	2.205 (56.00)
24	2.228 (56.60)	2.016 (51.20)	2.622 (66.60)	2.370 (60.20)



<b>ADDED PART NUMBER</b> EC NO: UCP2009-2268 DRAWN: RBENES 2009/04/03 CHKD: JBEL 2009/04/06 APPR: FSM/TH 2009/04/06 REV: D2	<b>QUALITY SYMBOLS</b> ▽=0 ▽=0	<b>GENERAL TOLERANCES (UNLESS SPECIFIED)</b> <table border="1"> <tr> <th></th> <th>mm</th> <th>INCH</th> </tr> <tr> <td>4 PLACES</td> <td>± .10</td> <td>± .004</td> </tr> <tr> <td>3 PLACES</td> <td>± .15</td> <td>± .010</td> </tr> <tr> <td>2 PLACES</td> <td>± .25</td> <td>± .014</td> </tr> <tr> <td>1 PLACE</td> <td>± 0.36</td> <td>± .014</td> </tr> </table> ANGULAR ±1/2°		mm	INCH	4 PLACES	± .10	± .004	3 PLACES	± .15	± .010	2 PLACES	± .25	± .014	1 PLACE	± 0.36	± .014	<b>DIMENSION STYLE</b> IN/MM	<b>SCALE</b> ---	<b>DESIGN UNITS</b> METRIC	THIRD ANGLE PROJECTION
				mm	INCH																
4 PLACES	± .10	± .004																			
3 PLACES	± .15	± .010																			
2 PLACES	± .25	± .014																			
1 PLACE	± 0.36	± .014																			
<b>DRAFT WHERE APPLICABLE MUST REMAIN WITHIN DIMENSIONS</b>	<b>MATERIAL NO.</b> SEE CHART	<b>DOCUMENT NO.</b> SDA-44483-****	<b>SHEET NO.</b> 1 OF 3																		

RIGHT ANGLE HEADER ASSY  
SELECTIVELY LOADED  
MINI-FIT T.P.A. SERIES  
MOLEX INCORPORATED

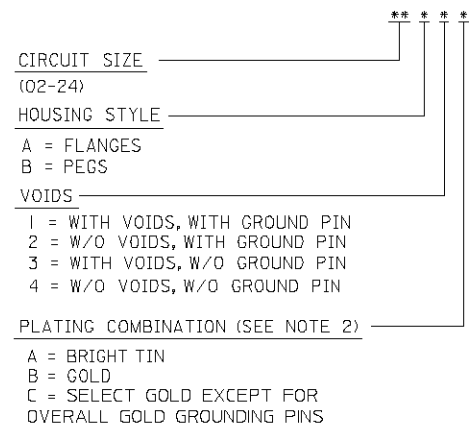
THIS DRAWING CONTAINS INFORMATION THAT IS PROPRIETARY TO MOLEX INCORPORATED AND SHOULD NOT BE USED WITHOUT WRITTEN PERMISSION

ITEM NO.	CHARACTERISTIC DESCRIPTION	CKT. SIZE	TERMINAL VERSION REQUIRED AT EACH CIRCUIT LOCATION: (SEE CODES AT BELOW)																								PACKAGING TYPE
			1	2	3	4	5	6	7	8	9	10	11	12	13	14	15	16	17	18	19	20	21	22	23	24	
J	44483-0001	I2A1B	I2	2	2	2	4	2	2	2	2	2	-	2	2	-	-	-	-	-	-	-	-	-	-	BULK	
X	44483-0002	I2A2B	I2	2	2	2	4	2	2	2	2	2	2	2	2	-	-	-	-	-	-	-	-	-	-	BULK	
	44483-0003	I2A1B	I2	2	2	2	4	2	2	2	2	2	2	2	-	-	-	-	-	-	-	-	-	-	-	TRAY	
	44483-0004	O4A2B	O4	2	2	4	2	-	-	-	-	-	-	-	-	-	-	-	-	-	-	-	-	-	-	BULK	
I	44483-0005	O4A2A	O4	1	1	3	1	-	-	-	-	-	-	-	-	-	-	-	-	-	-	-	-	-	-	BULK	
	44483-0006	I2A1B	I2	2	2	2	4	-	2	2	2	2	2	2	2	-	-	-	-	-	-	-	-	-	-	BULK	
	44483-0007	I6A2A	I6	1	1	3	1	1	3	3	1	3	1	3	1	3	1	1	3	-	-	-	-	-	-	BULK	
	44483-0008	I2A1B	I2	2	-	4	4	-	2	-	2	2	2	2	-	-	-	-	-	-	-	-	-	-	-	BULK	
H	44483-0009	O6A2B	O6	2	2	4	2	2	2	-	-	-	-	-	-	-	-	-	-	-	-	-	-	-	-	BULK	
	44483-0010	O6A1B	O6	2	-	4	2	-	2	-	-	-	-	-	-	-	-	-	-	-	-	-	-	-	-	BULK	
	44483-0011	I2A3A	I2	1	1	1	1	1	1	1	1	-	1	1	-	-	-	-	-	-	-	-	-	-	-	BULK	
	44483-0012	I2A1C	I2	5	5	5	4	5	5	5	5	5	-	5	5	-	-	-	-	-	-	-	-	-	-	BULK	
G	44483-0013	I2A1C	I2	5	5	5	4	-	5	5	5	5	-	5	-	-	-	-	-	-	-	-	-	-	-	TRAY	

**PIN. I.D. CODES FOR CHART ABOVE**  
**PIN TYPE & PLATING (SEE NOTE 2)**

\*- = VOID LOC.  
 \*1\* = STANDARD PIN, TIN  
 \*2\* = STANDARD PIN, GOLD  
 \*3\* = GROUNDING PIN, TIN  
 \*4\* = GROUNDING PIN, GOLD  
 \*5\* = STANDARD PIN, SELECT GOLD

CHARACTERISTICS LEGEND:



- NOTES:
- MATERIAL:  
HOUSING: POLYSESTER, UNFILLED, UL94 V-0, COLOR: BLACK  
TERMINAL: BRASS
  - FINISH (TERMINAL):  
A=.000030/(.00076) MIN. GOLD OVER .000050/(.00127) MIN. NICKEL  
B=.000200/(.00508) MIN. BRIGHT TIN OVER .000100/(.00254) MIN. COPPER  
C=.000030/(.00076) MIN. GOLD OVER .000100/(.00254) MIN. SELECT MATTE TIN OVER .000050/(.00127) MIN. NICKEL OVERALL
  - PRODUCT SPECIFICATION: PS-5556-003
  - PACKAGING:  
44483-0003 TRAY PACKED PER PK-44483-001  
ALL OTHERS: BULK PACKAGED
  - PART MATES WITH MINI-FIT T.P.A. RECEPTACLE 30067-\*.  
6. FLANGE MOUNT PART IS DESIGNED FOR USE WITH 4-40 OR M3 SCREWS.  
7. SEE CHART ABOVE FOR STANDARD PIN, GROUND PIN AND VOID LOCATIONS.  
8. PARTS ARE NOT TO BE MATED OR UNMATED WHILE CIRCUITS ARE LIVE.  
9. PART IS NOT DESIGNED FOR CURRENT SHARING.  
10. ITEM NUMBERS PRECEDED BY AND \*X\* IN THE CHART ABOVE ARE NOT AVAILABLE.  
11. PART CONFORMS TO CLASS "B" REQUIREMENTS OF COSMETIC SPECIFICATION PS-45499-002.

<b>ADD PART OPTION</b> EC NO: UCP2009-2268 DRWN:RBENES 2009/04/03 CHKD:JBELL 2009/04/06 APPR:FSMITH 2009/04/06	DESCRIPTION REV	QUALITY SYMBOLS ▽=0 ▽=0	GENERAL TOLERANCES (UNLESS SPECIFIED) <table border="1"> <tr> <th></th> <th>mm</th> <th>INCH</th> </tr> <tr> <td>4 PLACES</td> <td>± ---</td> <td>± ---</td> </tr> <tr> <td>3 PLACES</td> <td>± ---</td> <td>± ---</td> </tr> <tr> <td>2 PLACES</td> <td>± ---</td> <td>± ---</td> </tr> <tr> <td>1 PLACE</td> <td>± ---</td> <td>± ---</td> </tr> </table>		mm	INCH	4 PLACES	± ---	± ---	3 PLACES	± ---	± ---	2 PLACES	± ---	± ---	1 PLACE	± ---	± ---	DIMENSION STYLE <b>IN/MM</b>	SCALE ---	DESIGN UNITS <b>METRIC</b>	THIRD ANGLE PROJECTION
			mm	INCH																		
		4 PLACES	± ---	± ---																		
		3 PLACES	± ---	± ---																		
2 PLACES	± ---	± ---																				
1 PLACE	± ---	± ---																				
DRAWN BY DATE GEP 1994/08/01		TITLE <b>RIGHT ANGLE HEADER ASSY SELECTIVELY LOADED MINI-FIT T.P.A. SERIES</b>		MOLEX INCORPORATED		SHEET NO. <b>3 OF 3</b>																
CHECKED BY DATE RJF 1994/08/01		APPROVED BY DATE RJF 1994/08/01		MATERIAL NO. <b>SEE CHART</b>		DOCUMENT NO. <b>SDA-44483-****</b>																
DRAFT WHERE APPLICABLE MUST REMAIN WITHIN DIMENSIONS		SIZE C		THIS DRAWING CONTAINS INFORMATION THAT IS PROPRIETARY TO MOLEX INCORPORATED AND SHOULD NOT BE USED WITHOUT WRITTEN PERMISSION																		