

No. 372 / TR5®

**IEC 60127-3/IV, 250 V, T
Lead Free**

Time-Current Characteristic
Time Lag (T)

Standard
IEC 60127-3/IV

Approvals
VDE
SEMKO
cULus Recognized
METI
CCC
K-Mark

Features

- Lead Free
- Reduced PCB space requirements
- Direct solderable or plug-in versions
- Internationally approved
- Low internal resistance
- Shocksafe casing
- Halogen free

WebLinks

Further infos see:
www.wickmanngroup.com

Further application infos see Fuseology:
www.wickmanngroup.com/download/fuseology.pdf



Specifications

Packaging

000: Tape/Ammopack (1000 pcs.)
041: Short Leads - Bulk (1000 pcs.)

Materials

Base/Cap: Brown Thermoplastic
Polyamide PA 6.6, UL 94V0
Round Pins: Copper, Sn plated

Operating Temperature

-40 °C to +85 °C (consider de-rating)

Climatic Category

-40 °C/+85 °C/21 days (EN 60068-1,-2-1,-2-2,-78)

Stock Conditions

+10 °C to +60 °C
relative humidity ≤ 75 % yearly average,
without dew, maximum value for 30 days-95 %

Vibration Resistance

24 cycles at 15 min. each (EN 60068-6)
10 - 60 Hz at 0.75 mm amplitude
60 - 2000 Hz at 10 g acceleration

Lead Pull Strength

10 N (EN 60068-2-21)

Solderability

260 °C, ≤ 3 s (Wave)
350 °C, ≤ 3 s (Soldering iron)

Soldering Heat Resistance

260 °C, 10 s (IEC 60068-2-20)

Marking

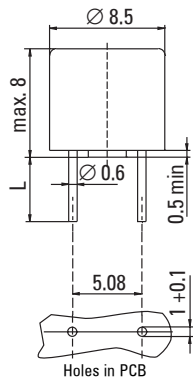
W, 372, 250 V, T, Current Rating, Approvals

Unit Weight

0.77 g (approx.)



Dimensions (mm)



Long Leads (L=18.8mm)
Short Leads (L=4.3mm)

Limits for Pre-arcing Time

Rated Current	1.5 x I _N	2.1 x I _N	2.75 x I _N	4 x I _N	10 x I _N
40 mA ... 6.30 A	> 1 h	< 2 min	400 ms ... 10s	150 ms ... 3 s	20 ms ... 150 ms

Permissible continuous operating current is ≤ 100 % at ambient temperature of 23 °C (73.4 °F).

Rated Current	Amp Code	Voltage Rating	Breaking Capacity	Voltage Drop 1.0 x I _N (W) max. (mV)	Power Dissipation 1.5 x I _N (W) max. (mW)	Melting Integral 10 x I _N (W) min. (A ² s)	Approvals					
							VDE	SEMKO	cULus	METI	PSE-JET*	CCC
40mA	0040	250V		900	90	0.009						
50mA	0050	250V		500	70	0.01						
63mA	0063	250V		400	80	0.02						
80mA	0080	250V		370	100	0.023						
100mA	0100	250V		300	110	0.047						
125mA	0125	250V		260	120	0.066						
160mA	0160	250V		200	130	0.14						
200mA	0200	250V		170	140	0.2						
250mA	0250	250V		150	150	0.28						
315mA	0315	250V	35A / 250 V AC ¹	140	160	0.36						
400mA	0400	250V	50-60Hz	130	170	0.9						
500mA	0500	250V	cos φ = 1.0	125	180	1.3						
630mA	0630	250V		120	200	2.5						
800mA	0800	250V		110	220	3.8						
1.00A	1100	250V		110	360	5.5						
1.25A	1125	250V		95	450	9						
1.60A	1160	250V		95	450	14						
2.00A	1200	250V		85	600	23						
2.50A	1250	250V		80	700	35						
3.15A	1315	250V		80	1100	60						
4.00A	1400	250V	40A / 250 V AC	75	1200	95						
5.00A	1500	250V	50A / 250 V AC	80	1300	94	G					
6.30A*	1630	250V		58	1250	105	G					

¹ Per UL, approved breaking capacity is 50 A at 250 V.

* Conducting path min. 0.2 mm²

**PSE-JET and K-Mark for China production

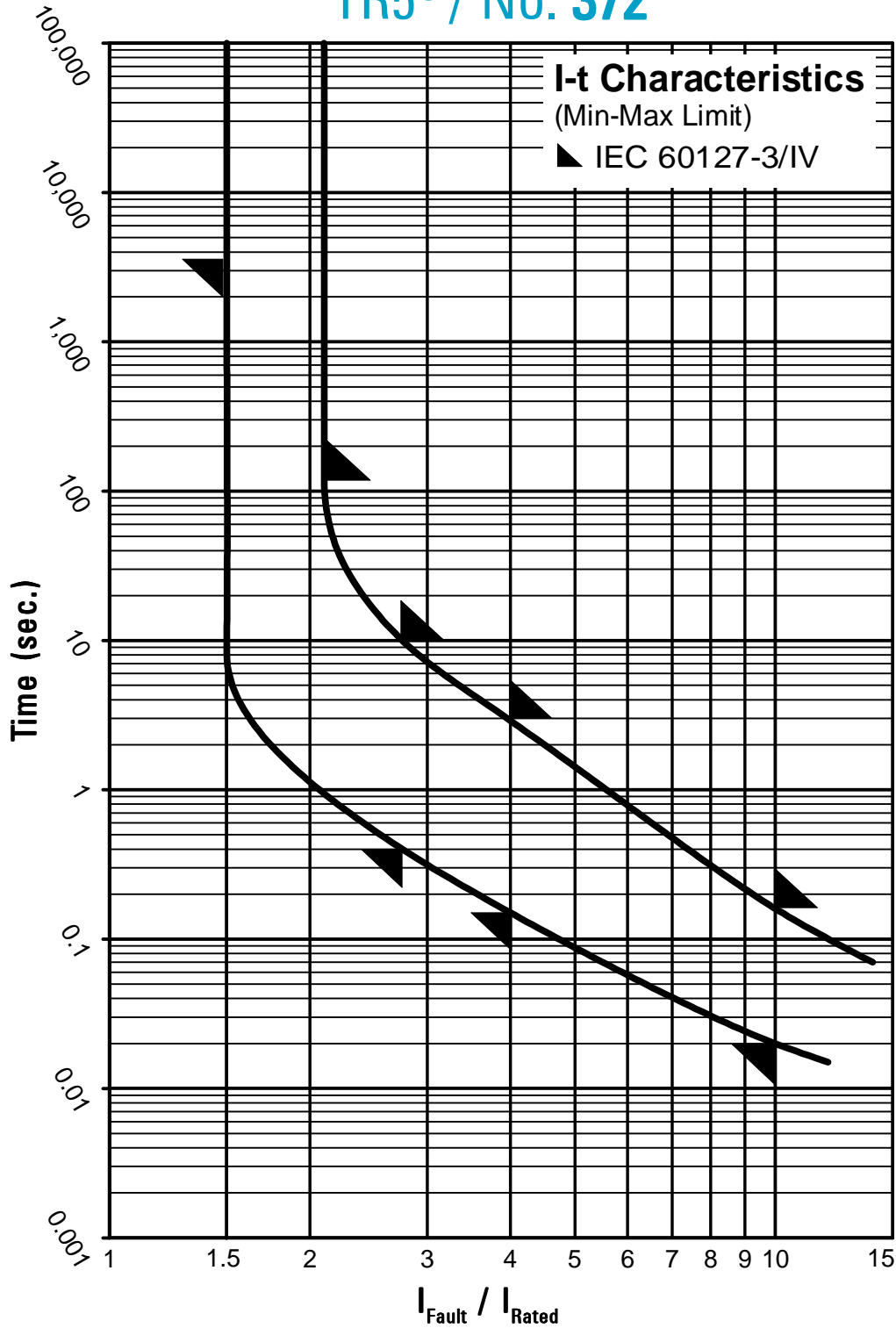
^G Expert Report
p = pending

Order Information

Qty.	Order-Number	Series	Amp Code	Packaging
		372		

Specifications are subject to change without notice

TR5® / No. 372



Contact WICKMANN for individual I-t curves