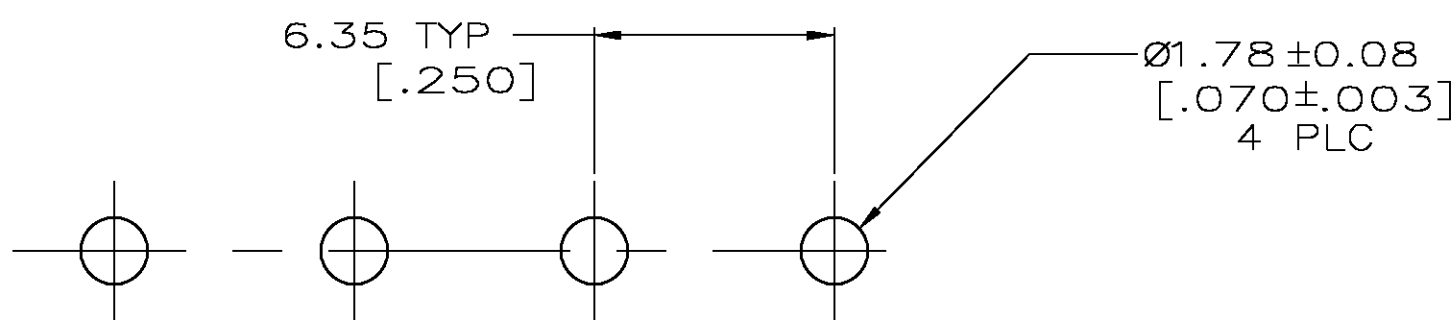
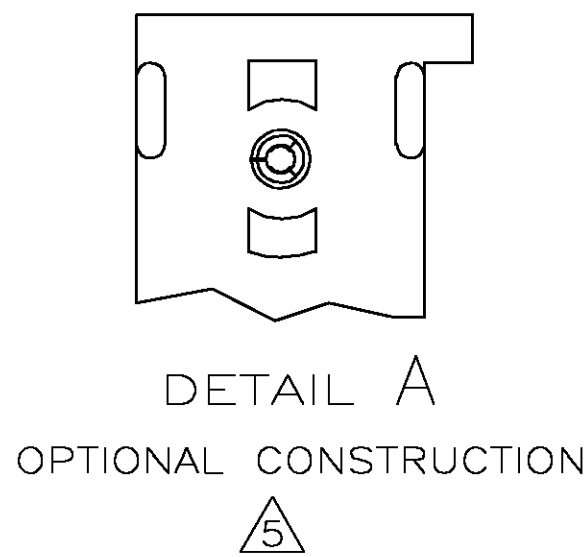
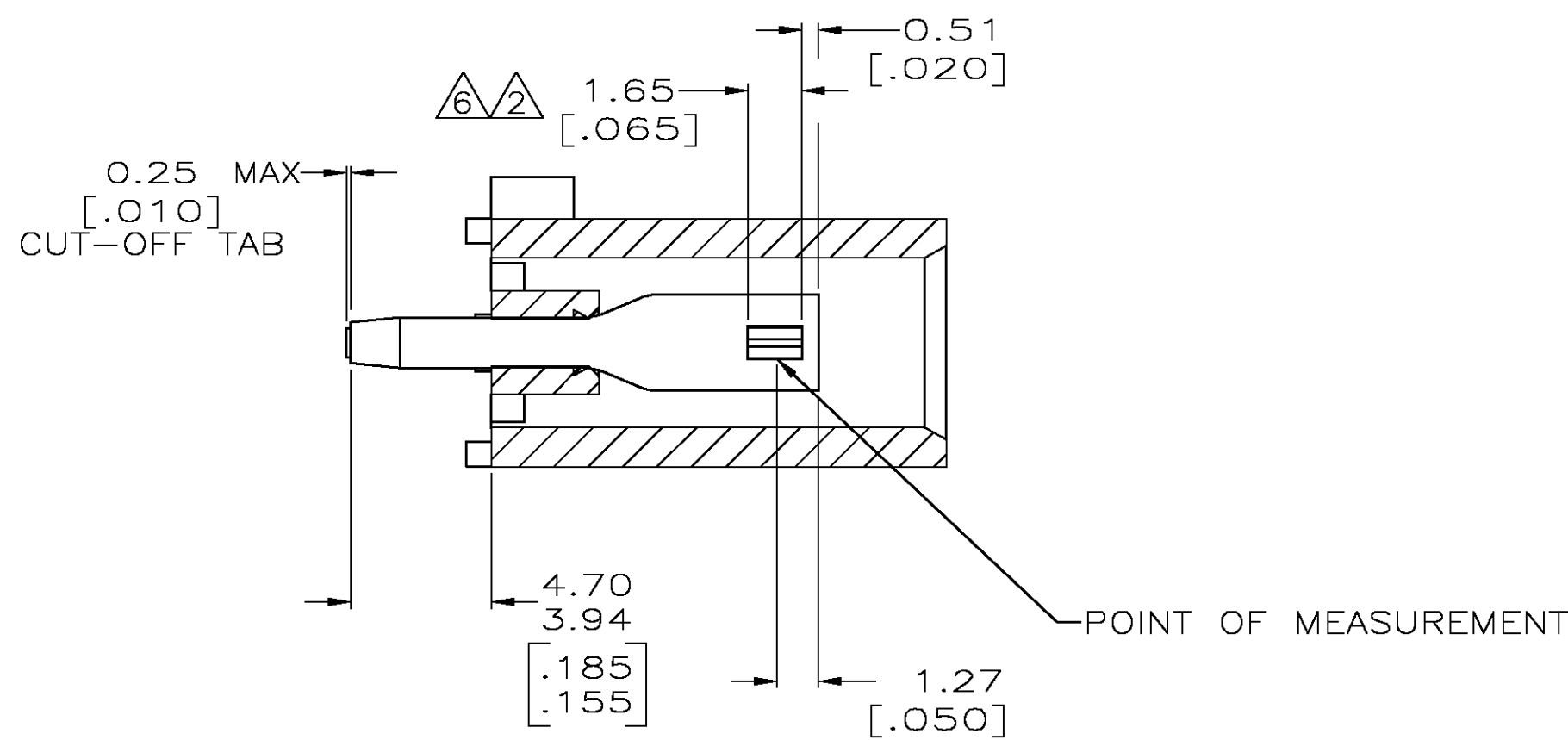
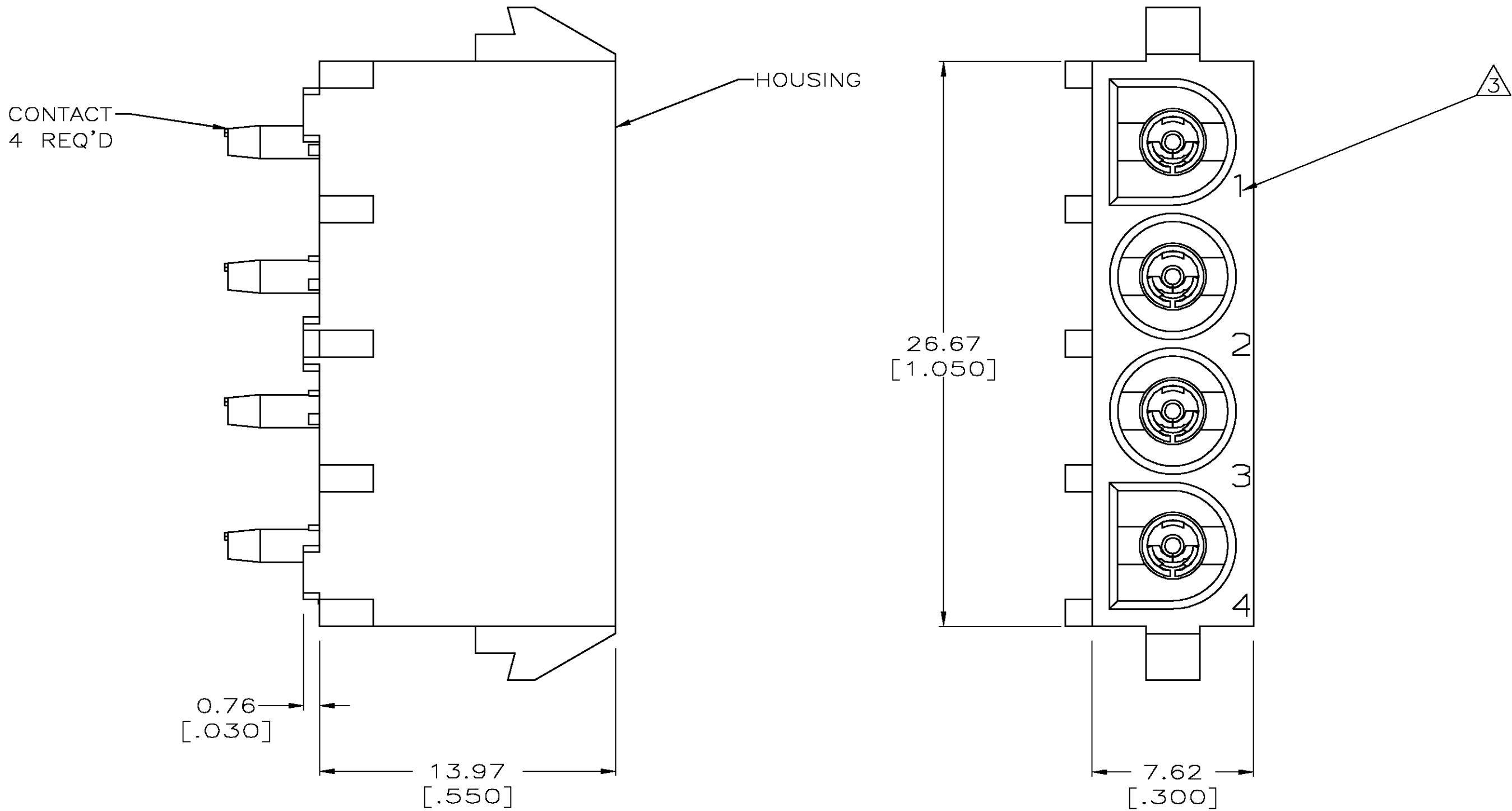
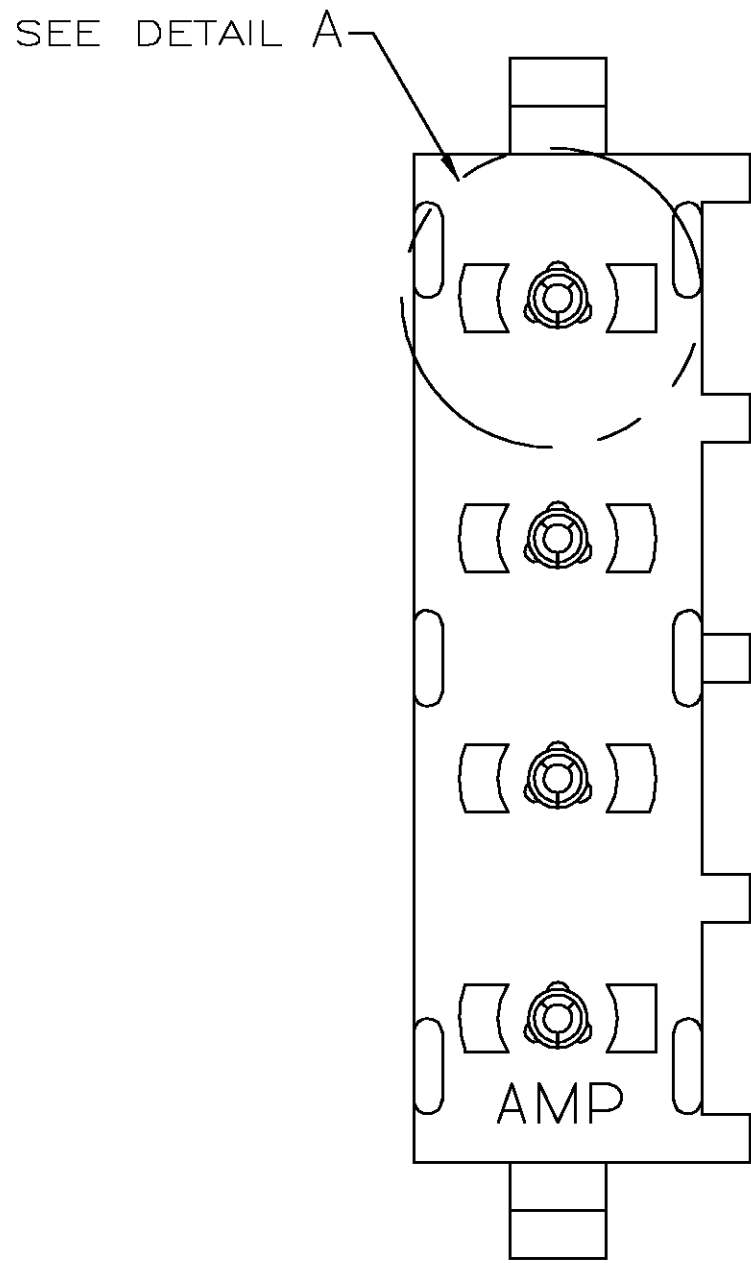
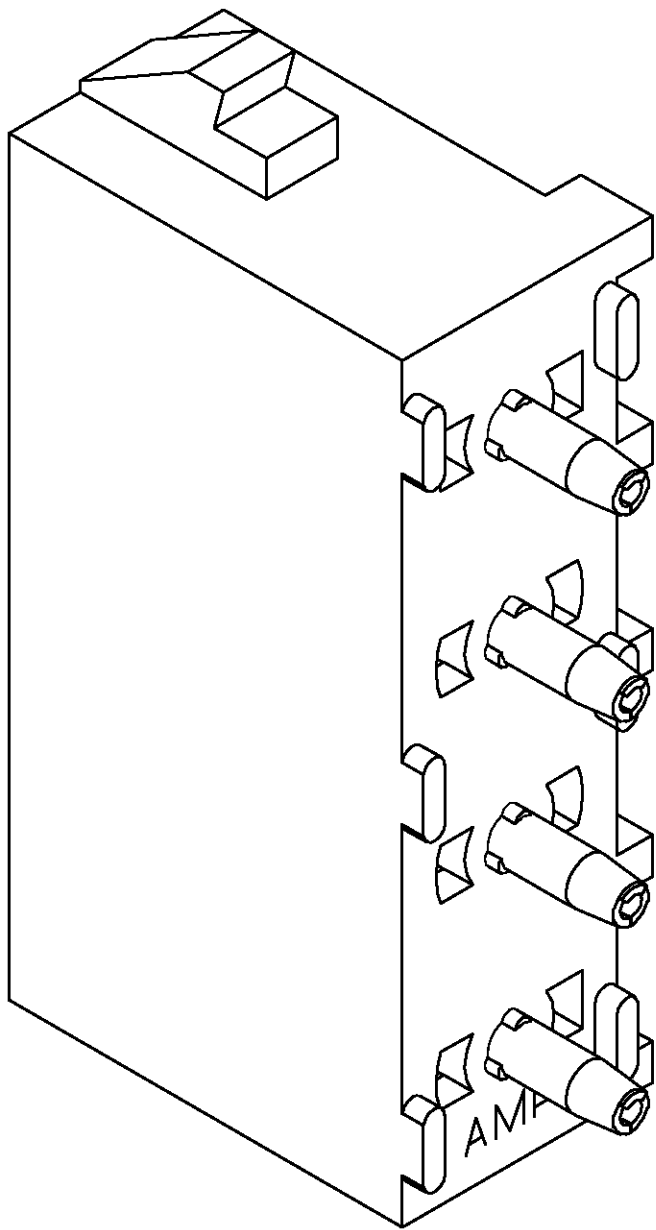


LOC		DIST		REVISIONS					
CM	00	P	LTR	DESCRIPTION			DATE	DWN	AP'D
		P	REVISED PER EC 0G3B-1094-04			03FEB05	KW	JE	



RECOMMENDED MOUNTING HOLE PATTERN
FOR 1.57 [.062] THICK P.C. BOARD

- PARTS COMPLY TO AMP SOLDERABILITY SPECIFICATION 109-11-3.
- CONTACT IS PLATED OVERALL WITH 0.00127 [.000050] NICKEL, THEN 0.00076 [.000030] GOLD OVER CONTACT LENGTH INDICATED AND MATTE TIN LEAD ON SOLDER TAIL END.
- CIRCUIT IDENTIFICATION CHARACTERS ARE ADJACENT TO THE INDICATED CAVITIES, BUT LOCATION AND ORIENTATION MAY DIFFER FROM PRINT.
- DIMENSIONS IN BRACKETS ARE IN INCHES.
- DRAIN HOLES LOCATED AS SHOWN. OPTIONAL CONSTRUCTION - ALL DRAIN HOLES LOCATED 90° AS SHOWN IN DETAIL A.
- CONTACT IS PLATED OVERALL WITH 0.00127 [.000050] NICKEL, THEN 0.00076 [.000030] GOLD OVER CONTACT LENGTH INDICATED AND MATTE TIN ON SOLDER TAIL END.



3-DIMENSIONAL MODEL
NTS

PHOSPHOR BRONZE, GOLD	NYLON,UL94V-0,WHITE	350826-4
PHOSPHOR BRONZE, GOLD	NYLON,UL94V-0,WHITE	350826-2
PHOSPHOR BRONZE, PRE-TIN	NYLON,UL94V-0,WHITE	350826-1
CONTACT MATERIAL AND FINISH	HOUSING MATERIAL	PART NUMBER

THIS DRAWING IS A CONTROLLED DOCUMENT.		DWN D. LEWIS 10-02-98	Tyco Electronics Corporation Greensboro, NC 27409		
DIMENSIONS: mm [INCHES]		CHK R. SWING 10-02-98	NAME M. TRULL 10-02-98 SOCKET HEADER ASSEMBLY, 4 CIRCUIT UNIVERSAL MATE-N-LOK™ SIZE CASE CODE DRAWING NO A1 00779 C=350826 RESTRICTED TO —		
TOLERANCES UNLESS OTHERWISE SPECIFIED:		PRODUCT SPEC			
0 PLC ± -		APPLICATION SPEC			
1 PLC ± -		WEIGHT			
2 PLC ± 0.13 [.005]		CUSTOMER DRAWING			
3 PLC ± -		SCALE 5:1 SHEET 1 OF 1 REV P			
4 PLC ± -					
ANGLES ± 0.30°					
FINISH					
MATERIAL SEE TABLE	SEE TABLE				

METRIC