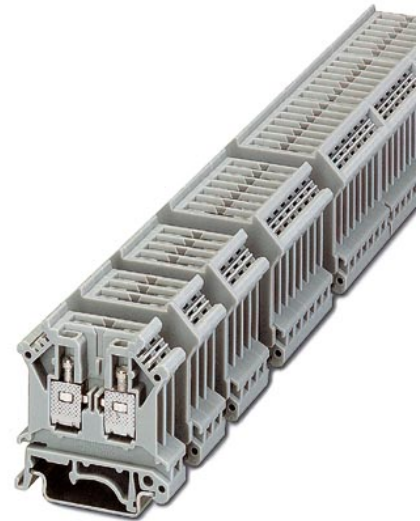


URELG 3

Order No.: 2820136

The illustration shows versions with a different no. of positions

<http://eshop.phoenixcontact.de/phoenix/treeViewClick.do?UID=2820136>

Basic termination blocks with screw connection for NS 32 and NS 35/7.5 DIN rail, with end cover, for ST-REL..., ST-OV... and ST-OE... plugs, 3-pos.

Commercial data

| | |
|--------------------------|--------------------|
| GTIN (EAN) | 4017918076788 |
| sales group | G004 |
| Pack | 10 pcs. |
| Customs tariff | 85369010 |
| Weight/Piece | 0.03346 KG |
| Catalog page information | Page 134 (IF-2009) |

Product notes

WEEE/RoHS-compliant since:
01/01/2003



<http://www.download.phoenixcontact.com>
Please note that the data given here has been taken from the online catalog. For comprehensive information and data, please refer to the user documentation. The General Terms and Conditions of Use apply to Internet downloads.

Technical data

General data

| | |
|---------------------|---|
| Number of positions | 3 |
|---------------------|---|

| | |
|-------------------------------------|--|
| Nominal voltage U_N | 400 V (voltage is determined by the coupling connector.) |
| Nominal current I_N | 16 A (current is determined by the coupling connector.) |
| Color | gray |
| Insulating material | PA |
| Depth | 42.5 mm |
| Width with lid | 20.8 mm |
| Height with coupling plug NS 35/7,5 | 112 mm |

Connection data

| | |
|--|---------------------|
| Conductor cross section solid min. | 0.2 mm ² |
| Conductor cross section solid max. | 4 mm ² |
| Conductor cross section stranded min. | 0.2 mm ² |
| Conductor cross section stranded max. | 4 mm ² |
| Conductor cross section AWG/kcmil min. | 24 |
| Conductor cross section AWG/kcmil max | 12 |
| Type of connection | Screw connection |
| Stripping length | 9 mm |
| Screw thread | M3 |

Certificates / Approvals



Certification DNV, GOST

Accessories

| Item | Designation | Description |
|------|-------------|-------------|
|------|-------------|-------------|

Assembly

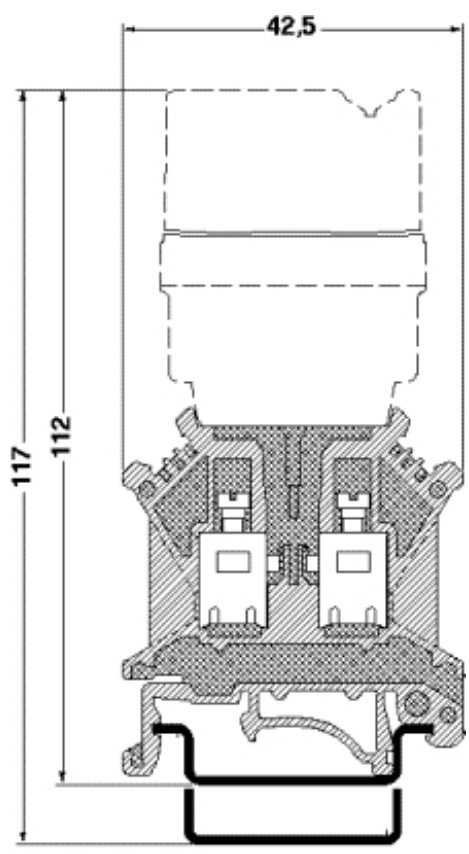
| | | |
|---------|------|--|
| 1201442 | E/UK | End clamp, for assembly on NS 32 or NS 35/7,5 DIN rail |
|---------|------|--|

Bridges

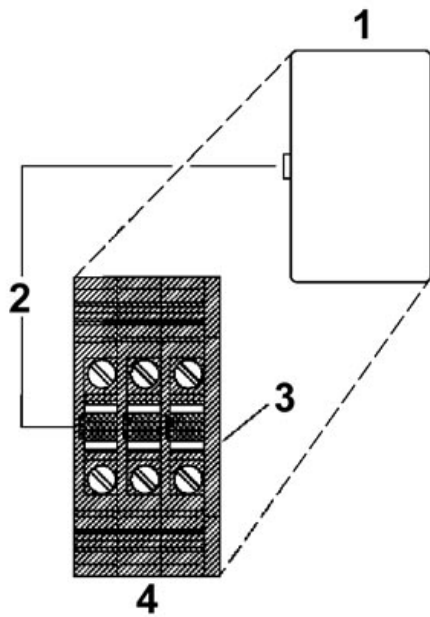
| | | |
|---------|--------------|---------------------------|
| 2820916 | DB 50- 90 BK | Wire bridge, Color: black |
| 2821180 | DB 50- 90 BU | Wire bridge, Color: blue |
| 2820929 | DB 50- 90 GY | Wire bridge, Color: gray |

Diagrams/Drawings

Dimensioned drawing



Schematic diagram



- 1 = Coupling connector
- 2 = Coding
- 3 = Cover
- 4 = Basic termination block

Address

PHOENIX CONTACT Inc., USA
586 Fulling Mill Road
Middletown, PA 17057, USA
Phone (800) 888-7388
Fax (717) 944-1625
<http://www.phoenixcon.com>



© 2010 Phoenix Contact
Technical modifications reserved;