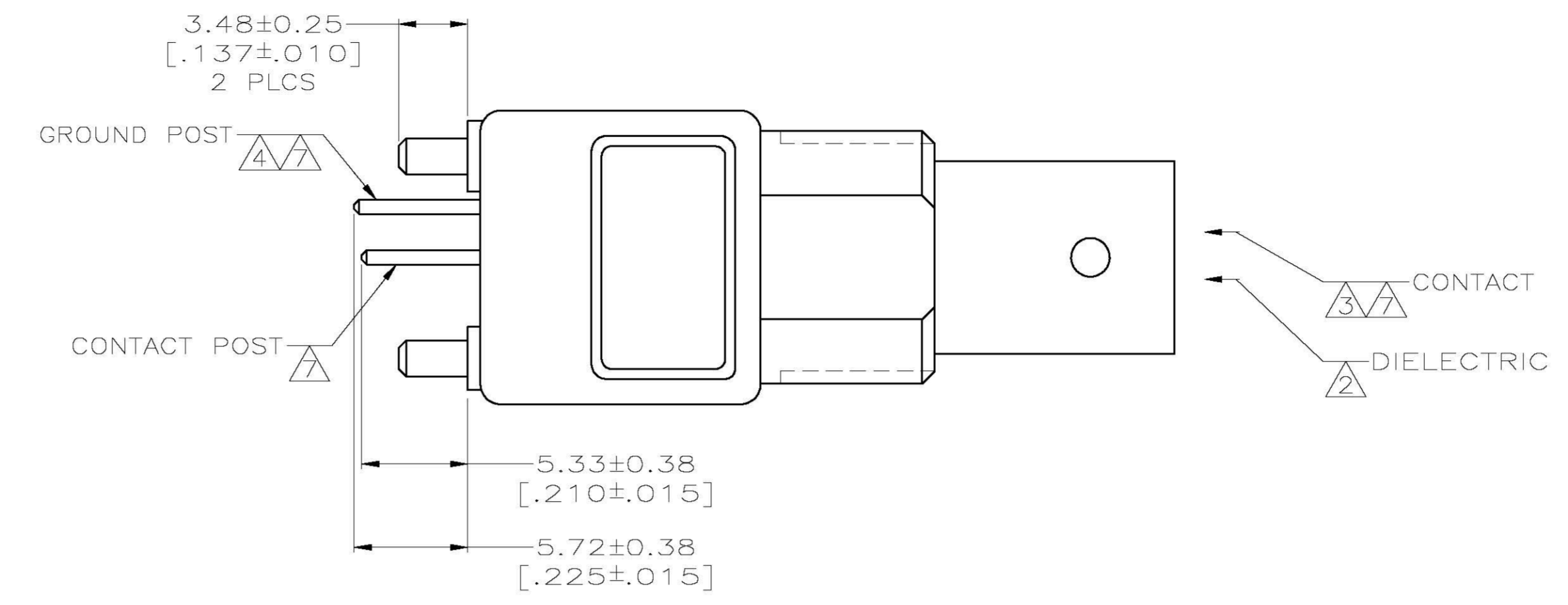
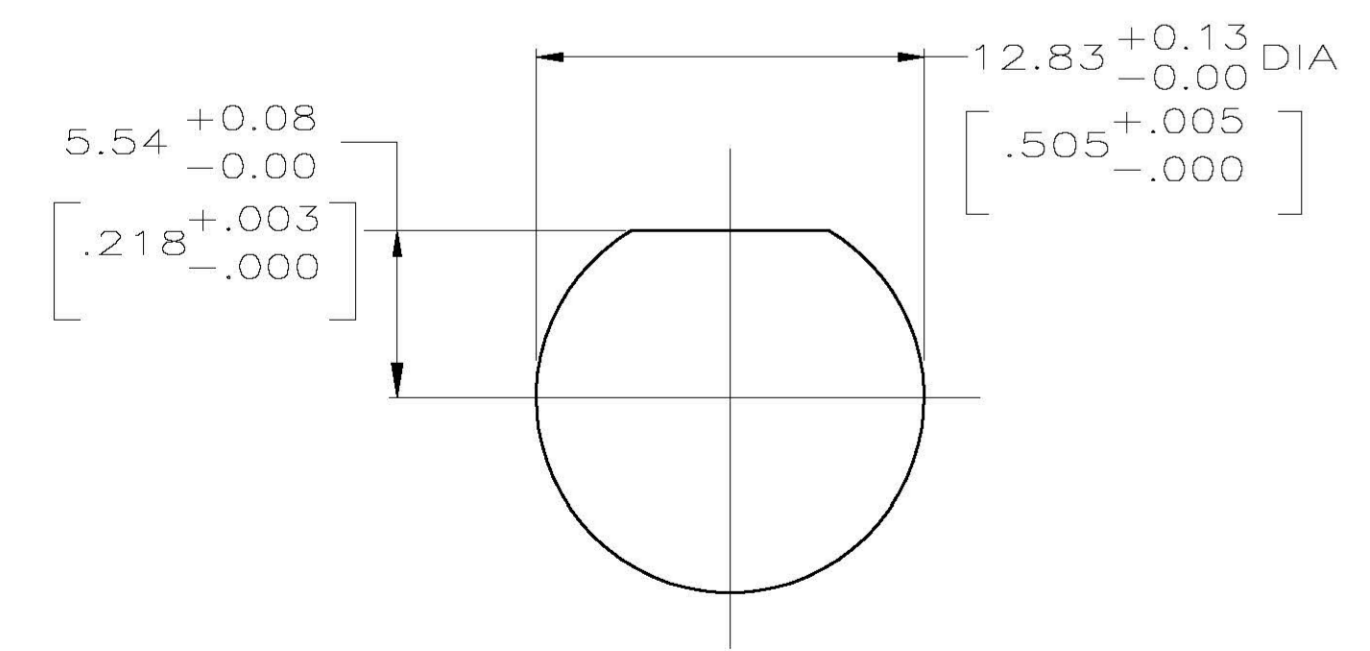
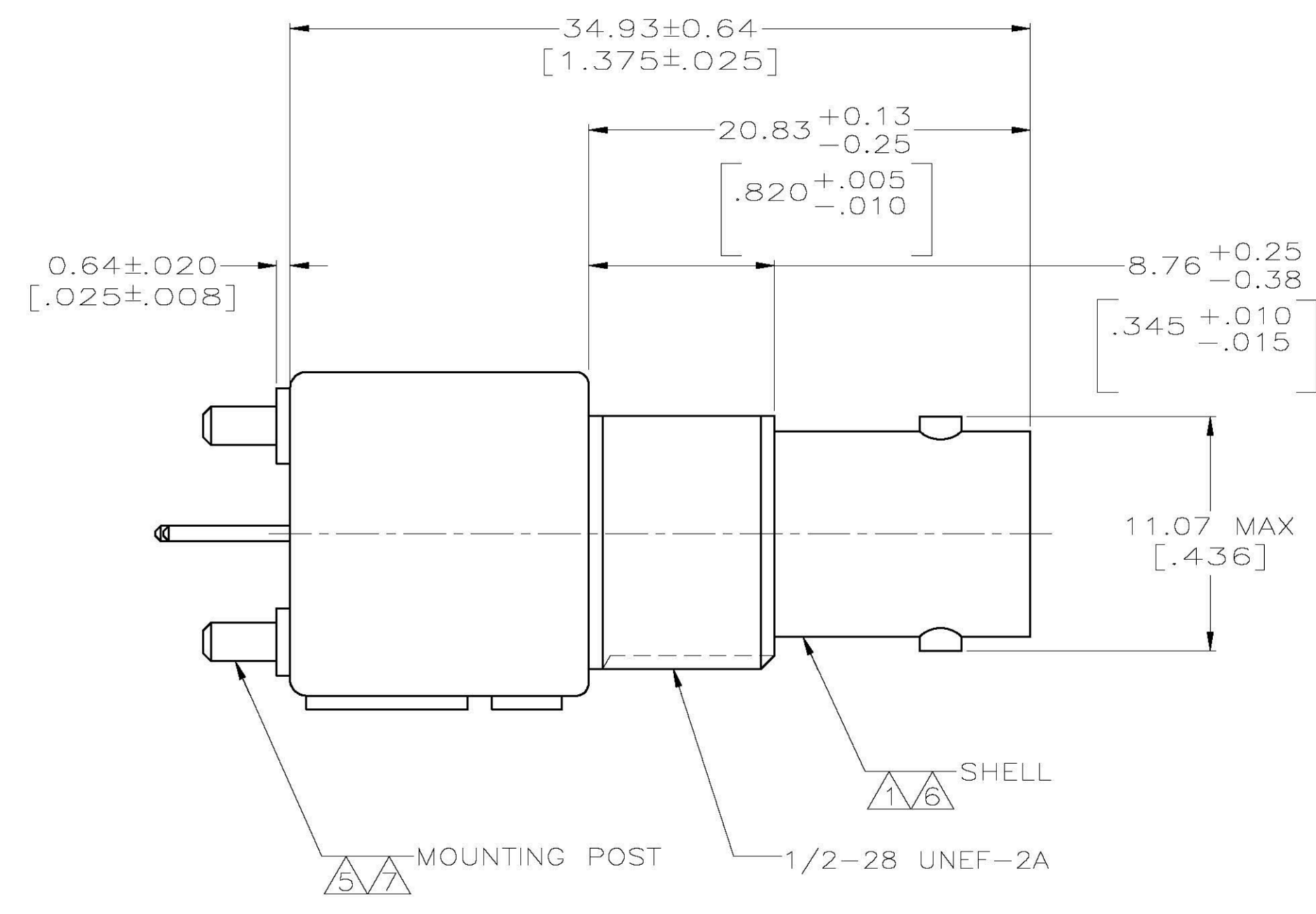
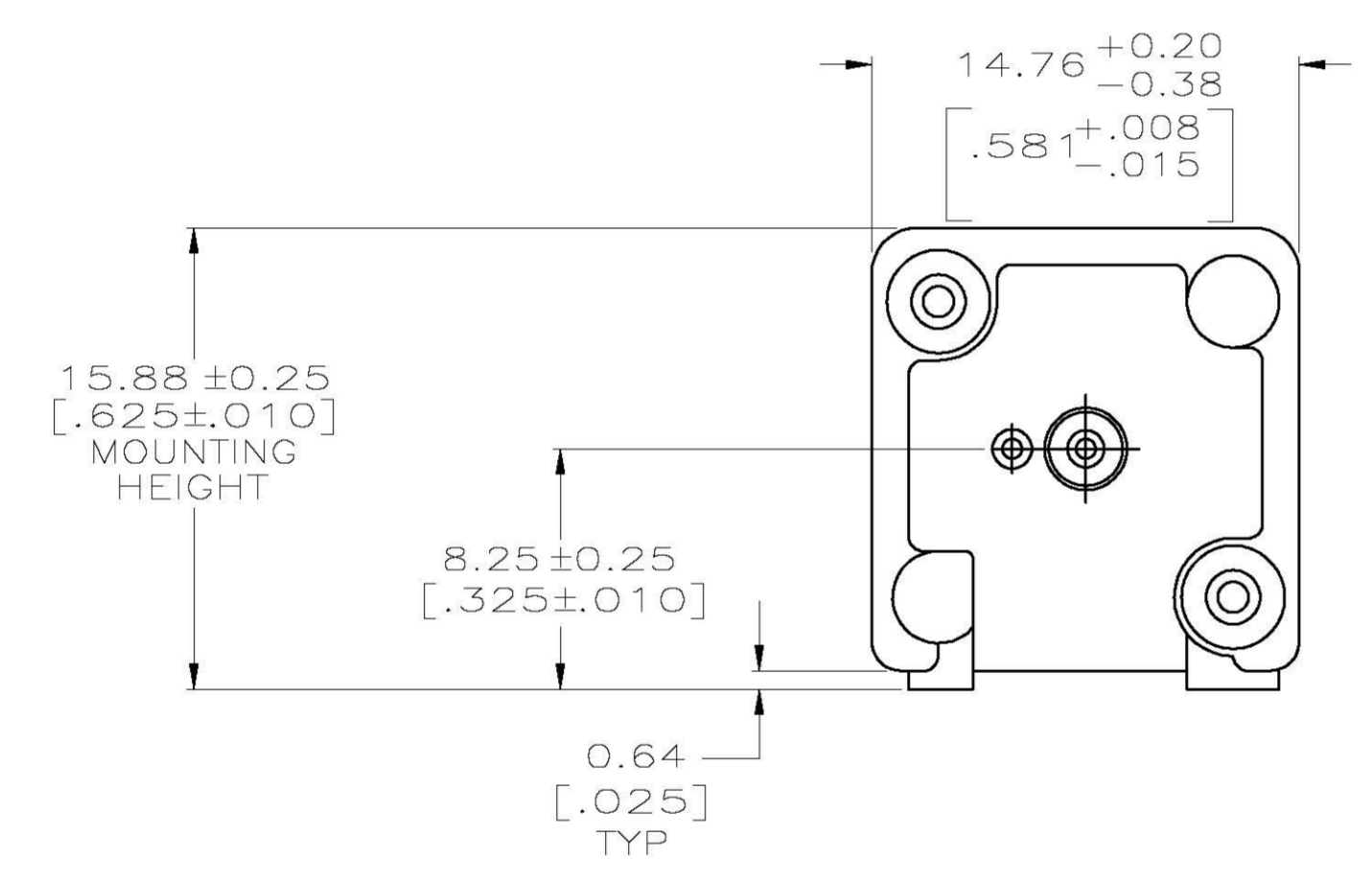


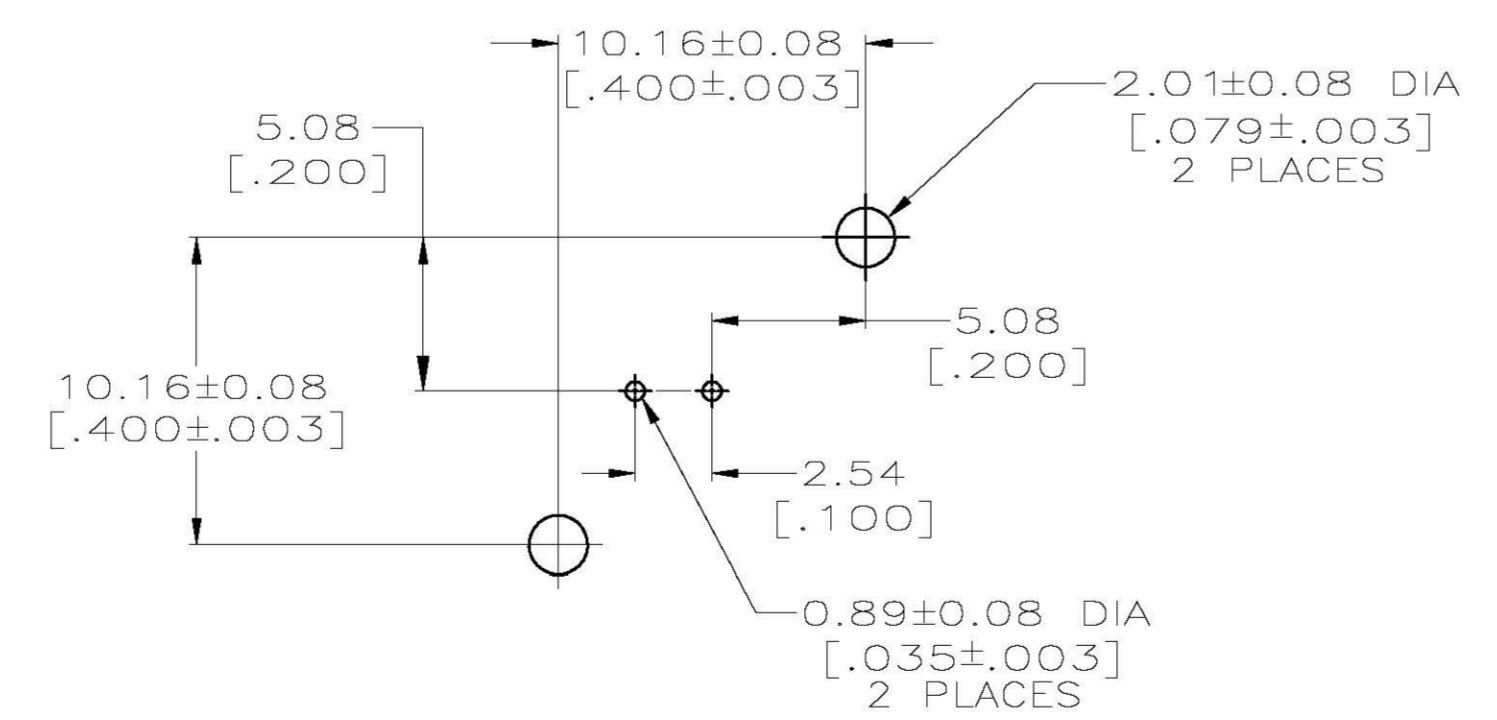
LOC		DIST		REVISIONS			
PL	LTR	DESCRIPTION	DATE	DMN	APVD		
C		PER EC 0514-0184-04	06JAN04	BM	JL		



- ① ZINC PER QQ-Z-363.
- ② POLYMETHYLPENTENE PER ASTM-D-1238.
- ③ PHOSPHOR BRONZE PER QQ-B-750.
- ④ BRASS PER ASTM-B-453.
- ⑤ BRASS PER ASTM-B-16.
- ⑥ NICKEL PLATE PER QQ-N-290,  
3.81 μm [.000150] MINIMUM THICK.
- ⑦ TIN PLATE PER ASTM-B-545,  
3.81 μm [.000150] MINIMUM THICK.
- 8. SEE INSTRUCTION SHEET 2769.



RECOMMENDED PANEL CUTOUT



PCB CONFIGURATION

227671-1  
PART NUMBER

THIS DRAWING IS A CONTROLLED DOCUMENT.		DMN J. LIPPERT 6-30-92	Tyco Electronics Corporation Harrisburg, PA 17105-3608	
DIMENSIONS: INCHES	TOLERANCES UNLESS OTHERWISE SPECIFIED:	CHK A. GABANY 7-2-92	APVD A. GABANY 7-2-92	NAME
	0 PLC ± -	PRODUCT SPEC		
	1 PLC ± -	108-12078		
	2 PLC ± 0.05 [.002]	APPLICATION SPEC		
	3 PLC ± -	-		
MATERIAL SEE NOTES 1-5	FINISH SEE NOTES 6-8	SIZE	CAGE CODE	DRAWING NO
		WEIGHT	A1	00779
CUSTOMER DRAWING		SCALE	4:1	SHEET 1 OF 1
		REV	C	