

ZEICHNUNG GESCHÜTZT DURCH
 ©COPYRIGHT 1988
 AMP DEUTSCHLAND GMBH
 ALLE RECHTE VORBEHALTEN

| REV. | ÄNDERUNG | DATUM | NAME |
|------|---|----------|------------|
| 2 | ZEICHNUNG IN EUROPEAN PROJECTION GEÄNDERT | 04.12.90 | A.HO |
| 3 | LÖTLÄNGE VON 3 IN 3.1 GEÄNDERT | 12.03.92 | A.HO |
| C | VERPACKUNGSANGABE HINZU | 15.01.96 | F.RDT |
| C1 | NOTE 3 CHANGED FROM SnPb into Sn | 23.03.06 | K.-H. HESS |

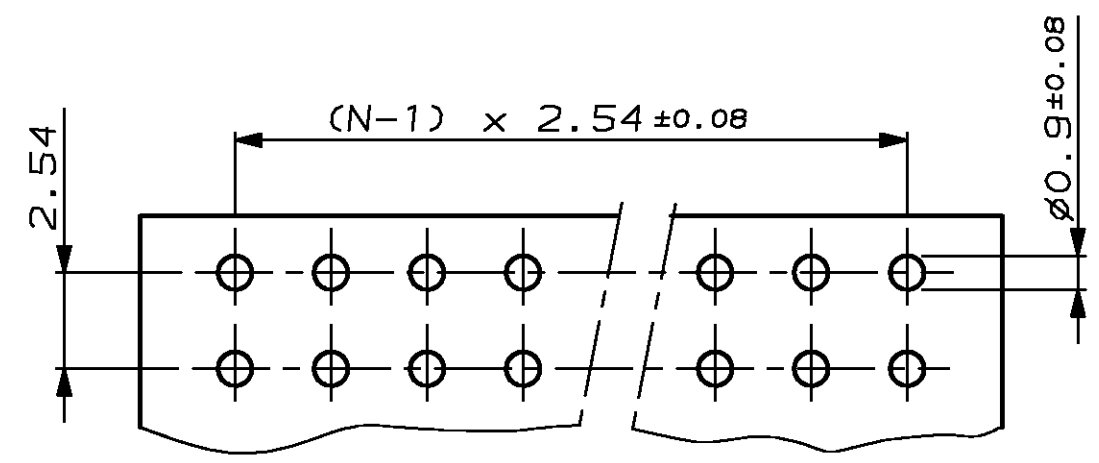
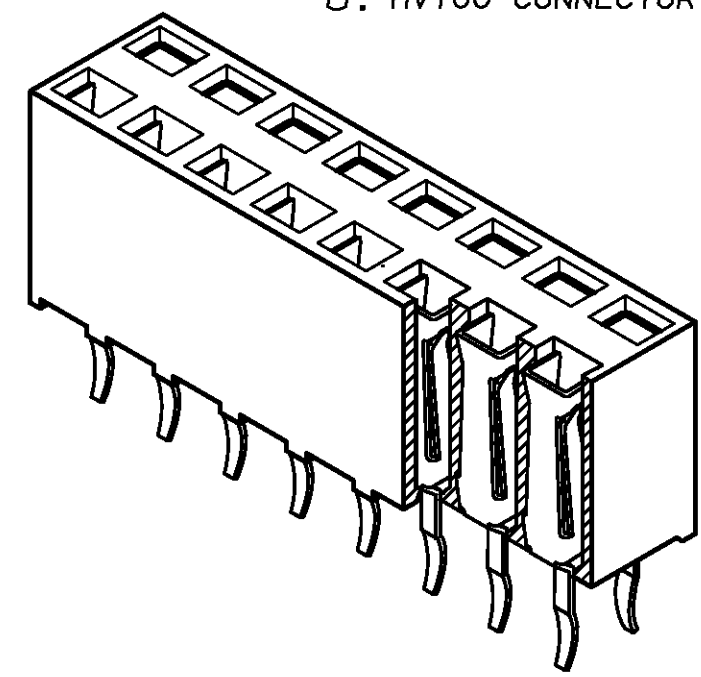
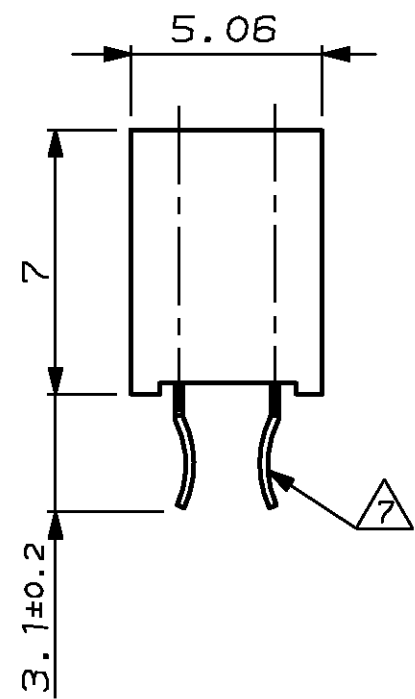
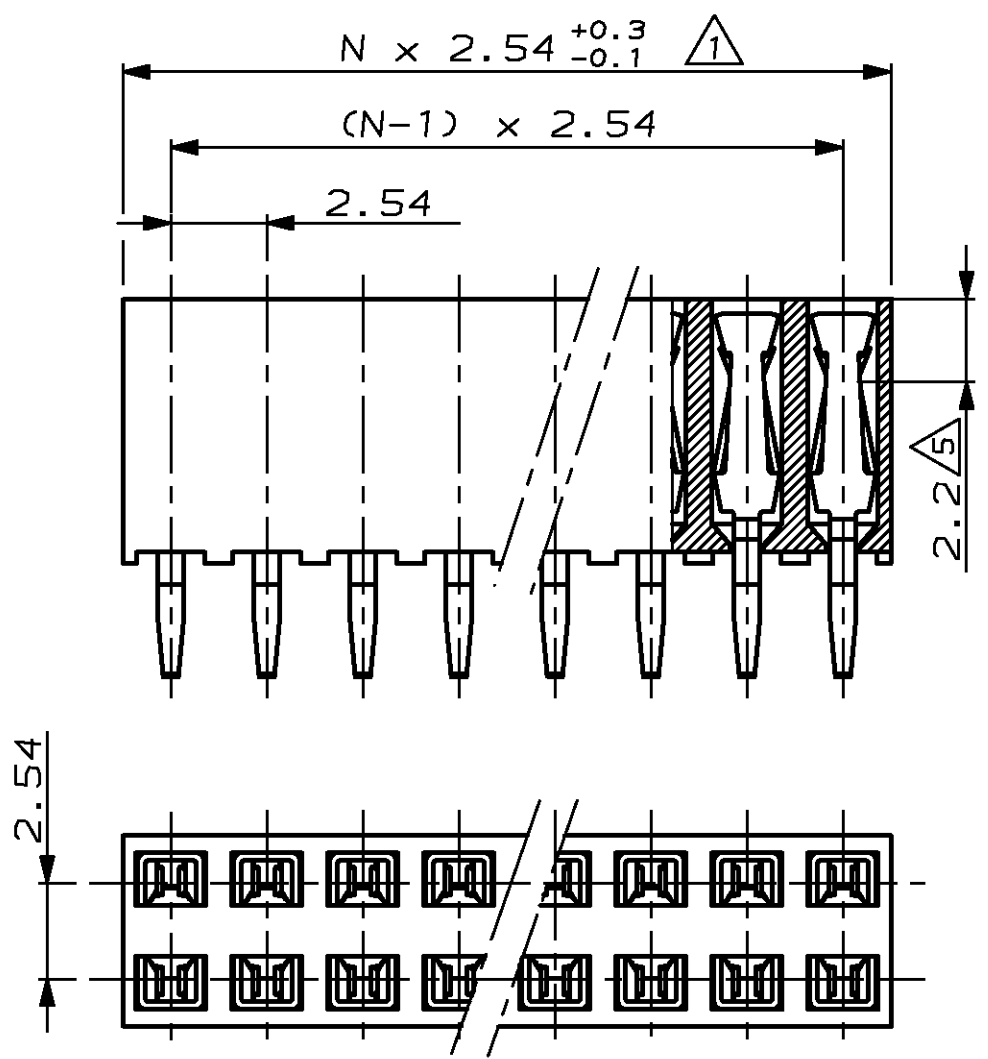
DO NOT SCALE
 DIMENSIONS IN mm

METRIC



NOTES:

- TO DETERMINE DIMENSIONS TAKE $2 \times N = \text{NR. OF POS.}$.
 FOR EXAMPLE: $2 \times 10 \text{ POS.} = N \times 2,54 = 25,4 \text{ mm.}$
 FOR ORDERNR. USE BASIC NR. + NR. OF POS.
 FOR EXAMPLE: $2 \times 2 \text{ POS.} = 215 307-2$ (SHORTEST VERSION)
 $2 \times 36 \text{ POS.} = 3-215 307-6$ (LONGEST VERSION)
- HOUSING MATERIAL: GREEN GLASSFILLED POLYESTER, UL 94V-0
 CONTACT MATERIAL: PHOSPHORBRONZE.
- PLATING: UNDERCOATING: $1,3 \mu\text{m Ni.}$
 AT CONT.PLACE: $0,8 \mu\text{m Au.}$
 AT SOLDER-TYNES: MIN. $2,5 \mu\text{m Sn.}$
- MATES WITH 0,63 SQUARE/ROUND MODU POSTS.
- CONTACT-POINT.
- RECOMMENDED P.C.BOARD-THICKNESS: 1,6.
- RETENTION FEATURE.
- HV100 CONNECTOR PACKED IN ANTISTATIC BLISTER



P.C.-BOARD HOLE-PATTERN

| | |
|------------------------|-----|
| NICHT TOLERIERTE MASSE | |
| ± 0.1mm | |
| ± - | |
| MASSTAB | 5:1 |

| | | | |
|---|---|-----------------------|---|
| VERWENDET FÜR E 91-52 572 | SEE NOTES FINISH | SEE NOTES MATERIAL | SEE NOTES PARTNUMBER |
| CUSTOMER DRAWING | AMP | | |
| FOR REFERENCE ONLY WILL NOT BE UPDATED | AMP-HOLLAND B.V. 's-Hertogenbosch, The Netherlands. | | |
| | THIS DRAWING IS UNPUBLISHED RELEASED FOR PUBLICATION 8.5.1987 | | |
| | © COPYRIGHT 1987 BY AMP-HOLLAND B.V. ALL INTERNATIONAL RIGHTS RESERVED. AMP PRODUCTS MAY BE COVERED BY U.S. AND FOREIGN PATENTS AND/OR PATENTS PENDING. | | |
| DR. R.VISSER | DATE 08.05.87 | WIRE RANGE - | NAME HV 100 VERTICAL CONNECTOR |
| CHK. W.SIMONS | DATE | INSUL.RANGE - | DUAL ROW, 7,0mm HEIGHT, TOP ENTRY, GOLD, MAX. 2x36 POSITIONS. |
| APP. L.v. SOEST | DATE | SIZE A3 | SHEET 1 OF 1 |
| | | DWG. No. | 215307 |
| | | REV. DATE | D M Y |
| | | 150196 | |
| | | REV. LTR. | C1 |

8 | 7 | 6 | 5 | 4 | 3 | 2 | 1