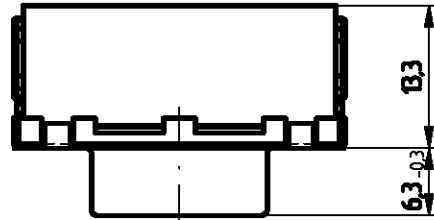
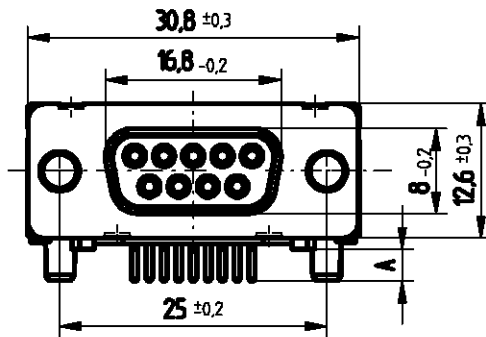
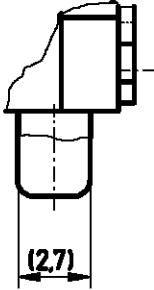
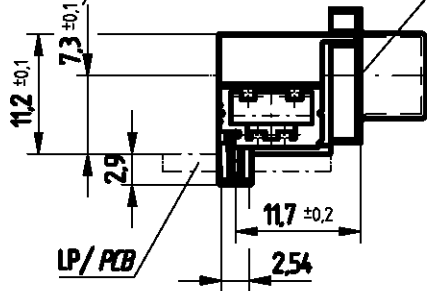


Ansicht X M 51

Bestückung kraftlos
powerless assembly



Einbauhöhe
mounting height



Gewinde / thread
M3 / #4-40

Bolzen / bolt :

Gewinde / thread
M3 / #4-40

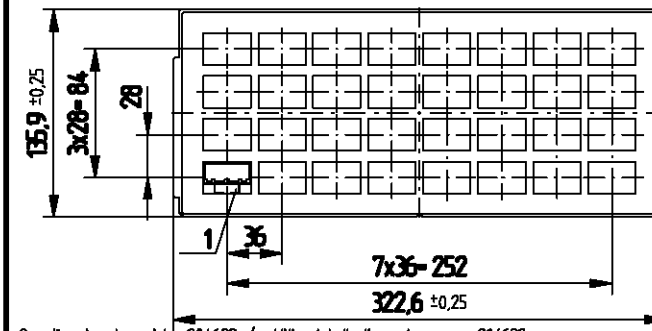
Ansicht X

LP/PCB

Anschlussbereich verzinkt / terminal area tin plating

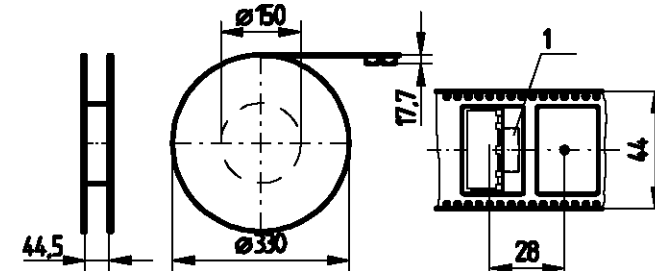
			Ø32		2	
				#4-40	2	
				M 3	2	
				#4-40	2	
		244555	M 3		2	
		204515	Ø32		3	
		204514		#4-40	3	
		204513		M 3	3	
224845		204512	#4-40		3	
		* 204511	M 3		3	*Tray versiegelt tray sealed

137 Ident-Nr part-no.	237 tape & reel	137 Ident-Nr part-no.	237 tray	ohne without	Mutter thread	Bolzen bolt	Pinlänge A Length of pin A	Bemerkung remark
-----------------------------	--------------------	-----------------------------	-------------	-----------------	------------------	----------------	-------------------------------	---------------------



Sonstige Angaben siehe 204629 / additional indications please see 204629

Verpackt in Tray
Verpackungseinheit 32 St.
tray packaging
packaging unit 32 pcs

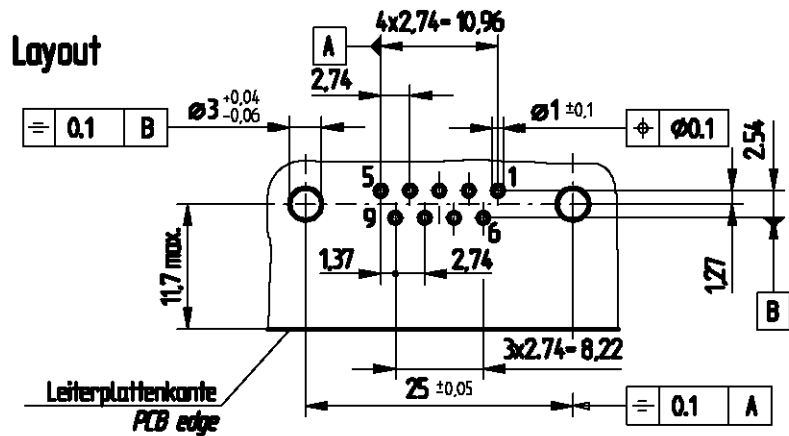


Sonstige Angaben siehe 204655 / additional indications please see 204655

Verpackt in Gurt
Verpackungseinheit 75 St.
tape & reel packaging
packaging unit 125 pcs

Abspulrichtung
reel off direction

Layout



Fehlende Masse und Angaben siehe DIN 41652 / Missing information and dimensions according to DIN 41652

Sonstige Angaben siehe Fertigungsunterlagen / Additional indications please see the production documentation

Information:	Tolerances ISO 2768-m	Scale 2:1
All rights reserved. Only for information. To insure that this is the latest version of this drawing, please contact one of the ERNI companies before using.	Subject to modification without prior notice. Drawing will not be updated.	Designation TMC-S 9-THR OM-Standard TMC-S 9-THR OM-Standard 204510
ERNI www.ERNI.com	Date 03.02.2011	index H:00070491.SZA
		TMCS