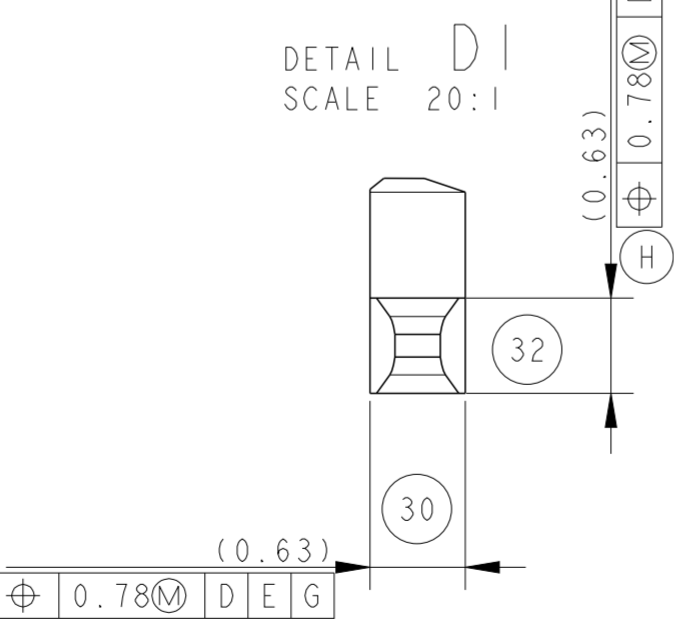
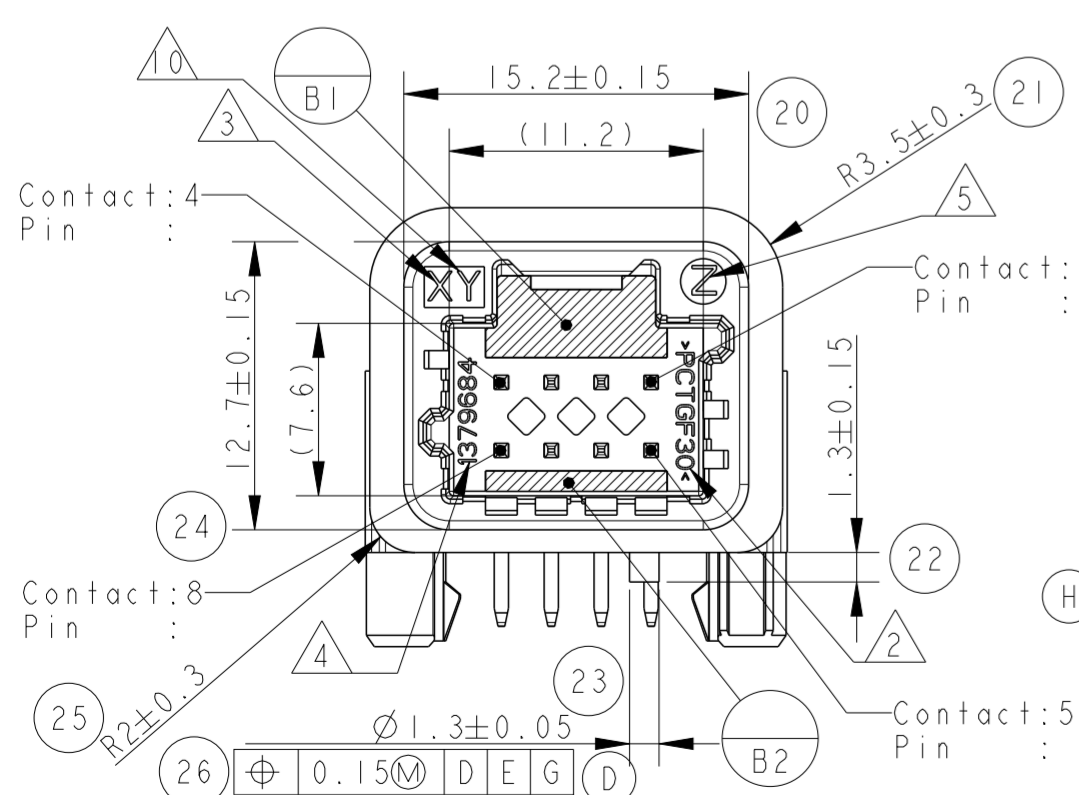
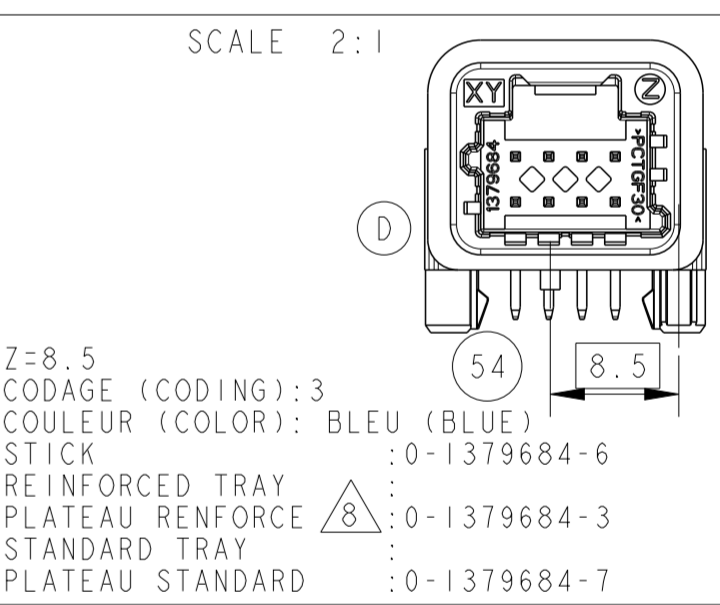
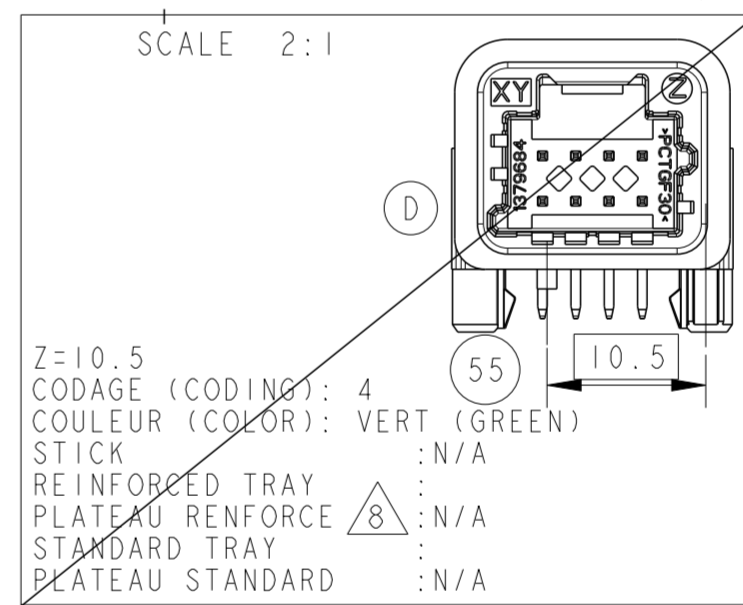
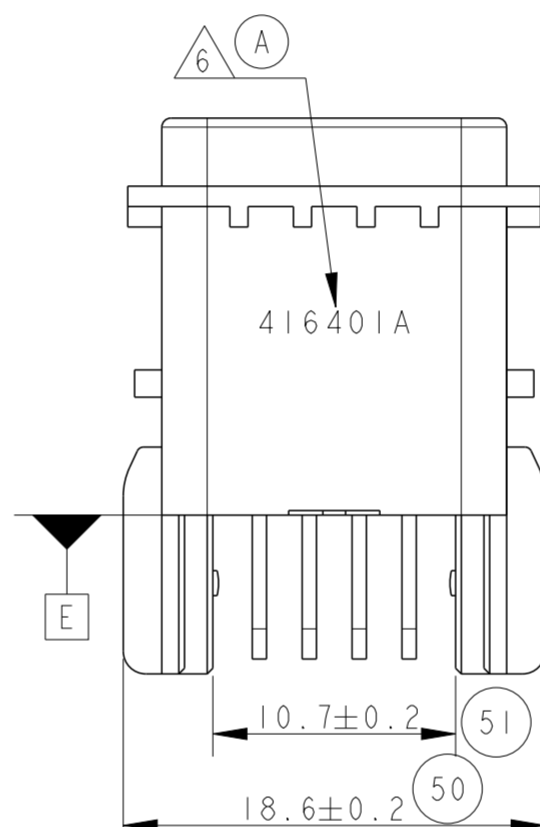
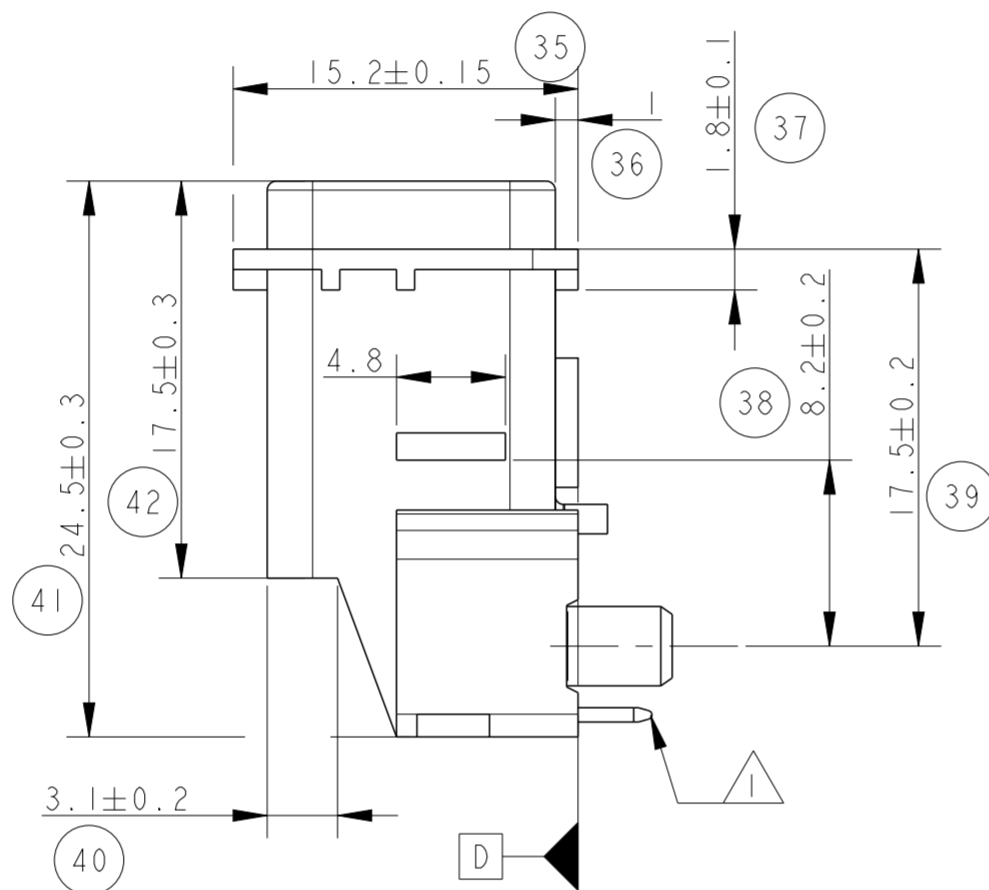
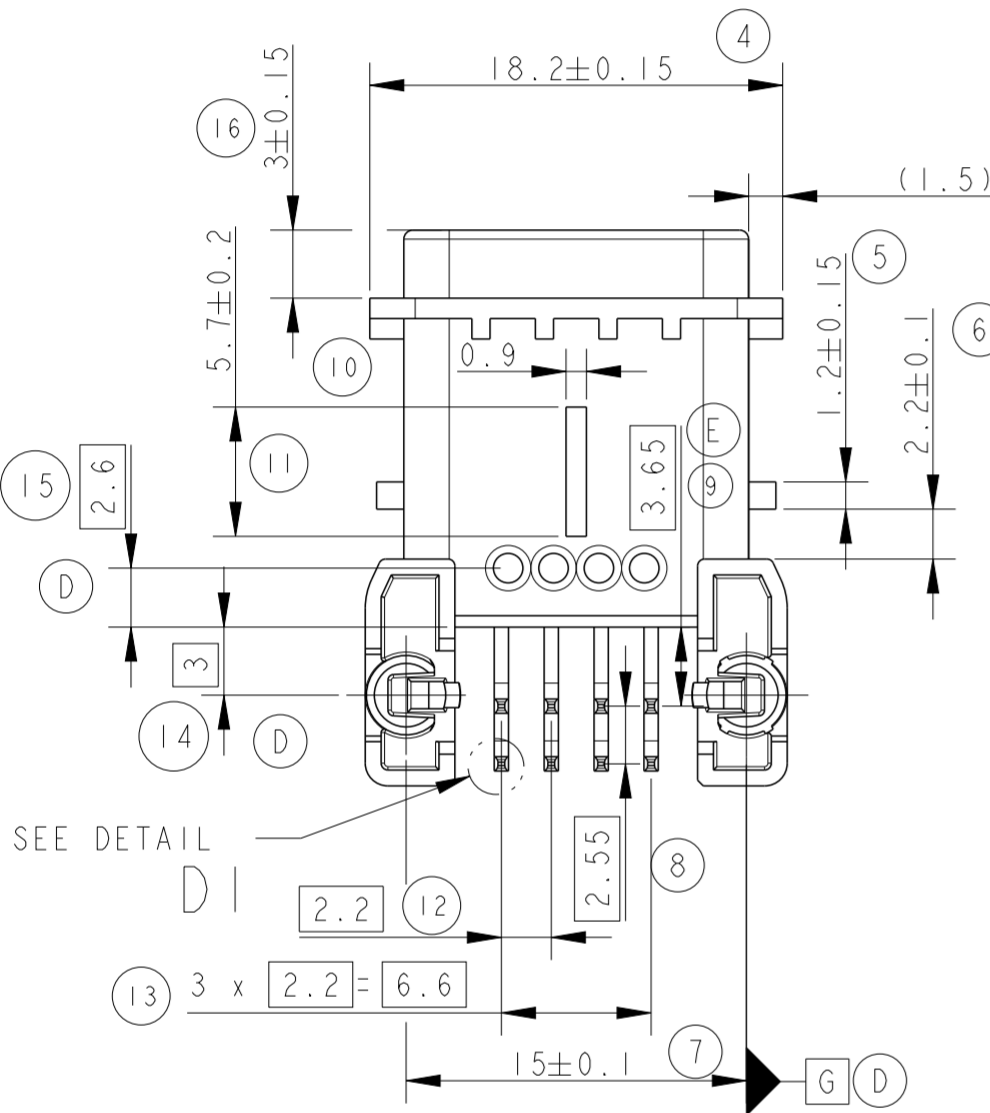
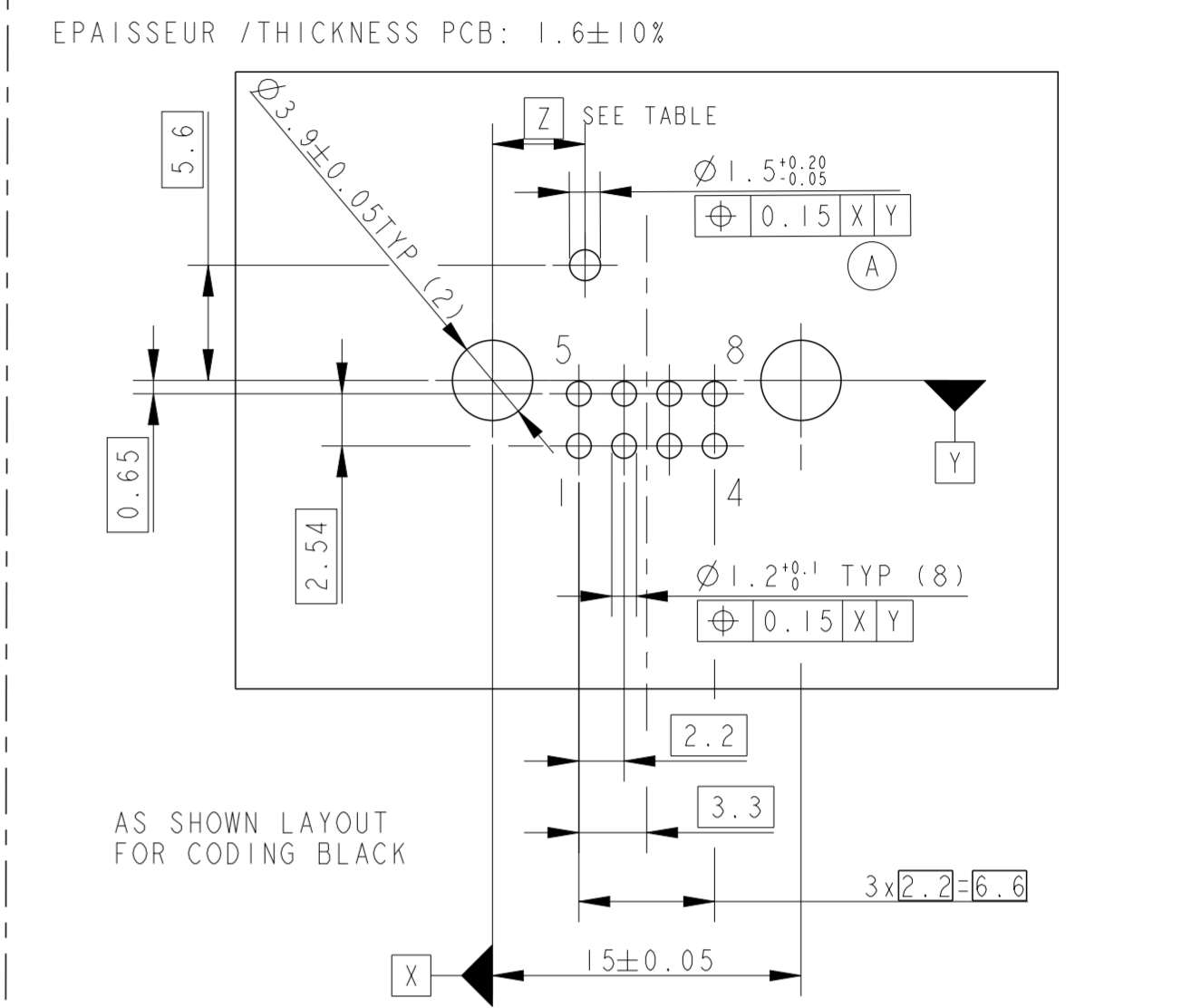
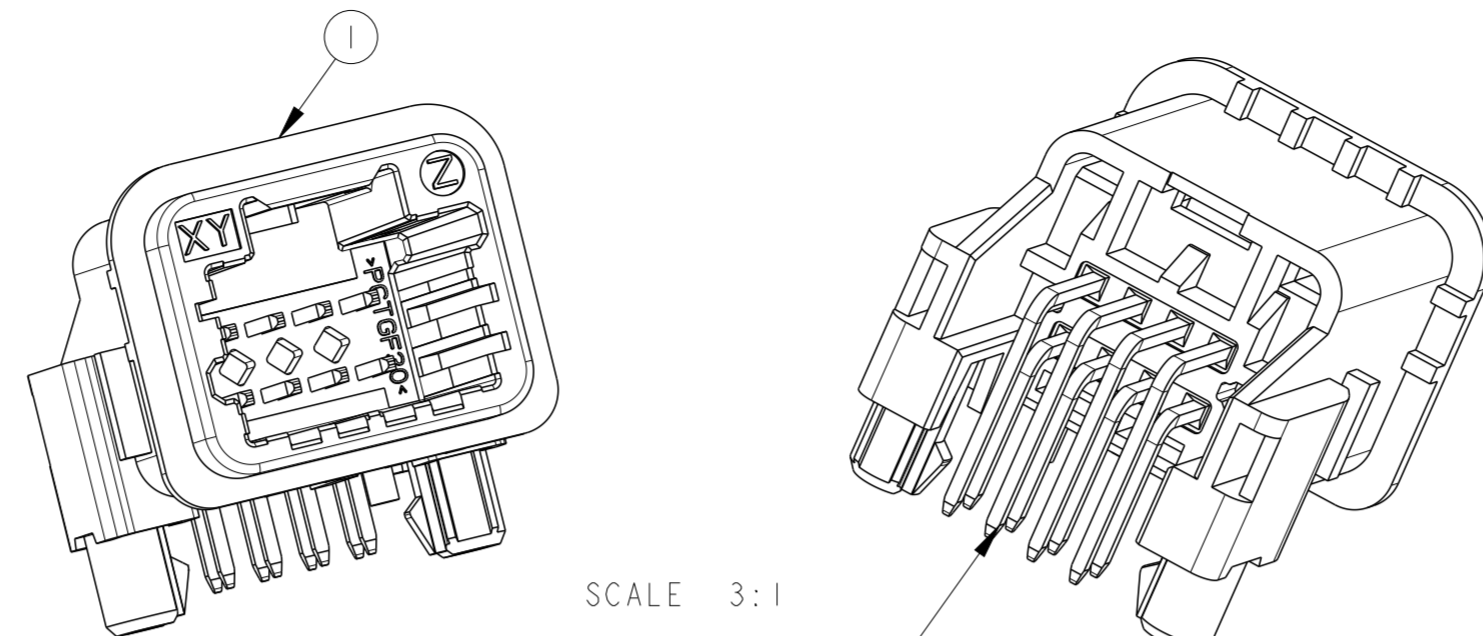
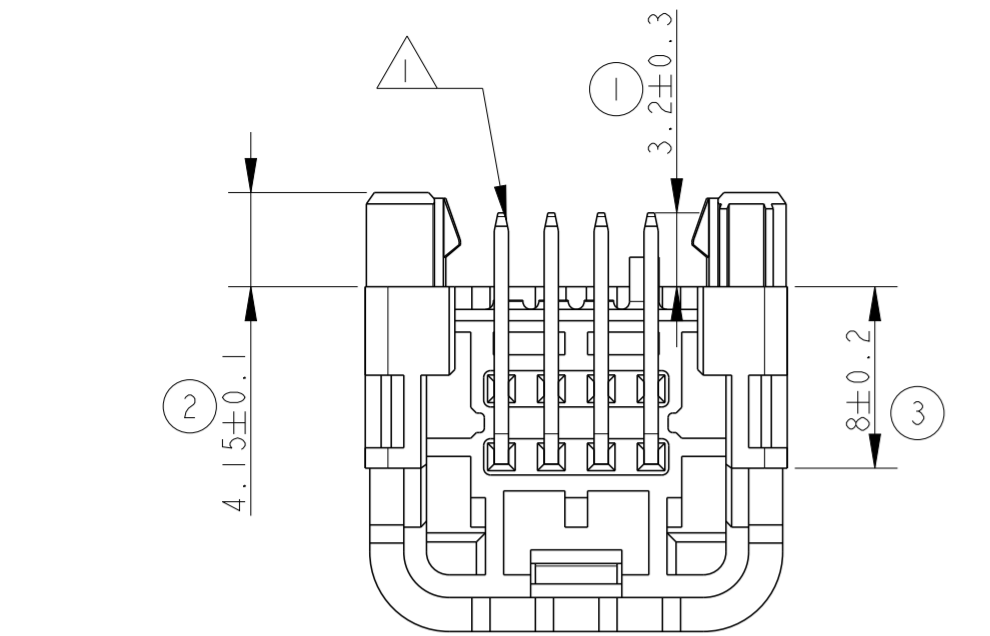
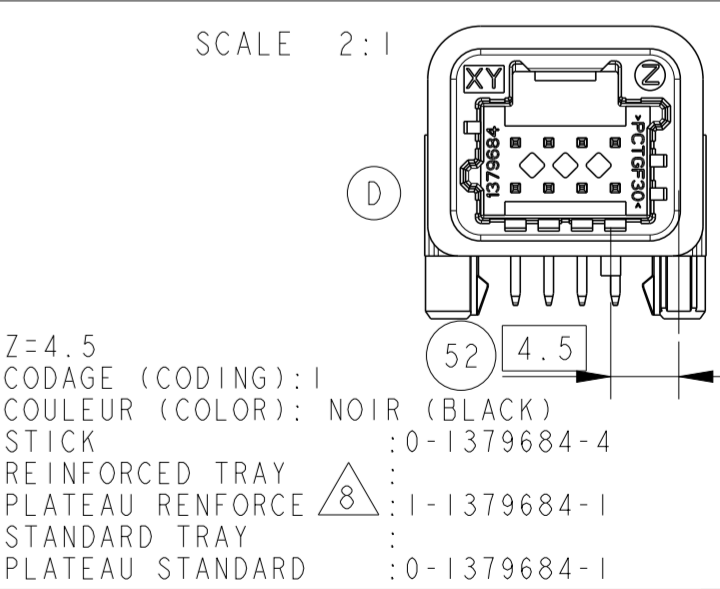
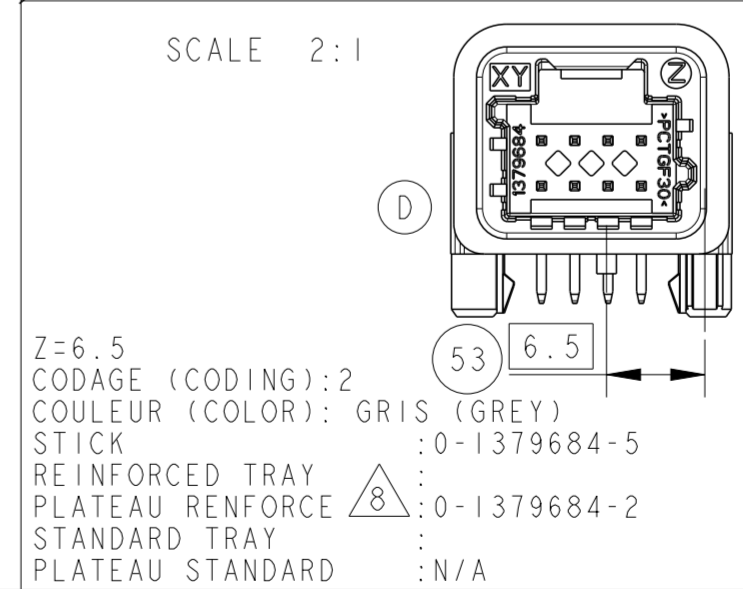


THIS DRAWING IS UNPUBLISHED. RELEASED FOR PUBLICATION 20
 © COPYRIGHT 20 BY - ALL RIGHTS RESERVED.

LOC		DIST		REVISIONS			
P	LTR	DESCRIPTION	DATE	DWN	APVD		
F	00	J	0-1379684-7 AVAILABLE FOR ALL CUSTOMER	29APR2013	RC	JL	



- 1 PRE ETAME : 1-3µm Sn sur 1.3-2.2µm Ni
PRE-TIN :
- 2 REFERENCE MATIERE
MATERIAL REFERENCE
- 3 NUMERO D'EMPREINTE
CAVITY NUMBER
- 4 REFERENCE TE (ASSEMBLAGE)
- 5 INDICE DE REVISION
PLASTIC PART REVISION
- 6 DATE D'ASSEMBLAGE A-SS-J-L-E-R
Année - semaine - jour - ligne - equipe - rev PRC
- J DATE CODE ASSY Y-WW-D-L-S-R
Year - Week - Day - Line - Shift - rev PRC
- 7. SOUDABILITE SUIVANT NORME FRANCAISE NF-A-89 400
SOUDABILITY ACCORDING STANDARD FRENCH
- 8 PLATEAU ESD SUIVANT NORME : IEC - 61340-5-1
R plateau 10E9Ω-10E12Ω
TRAY ESD ACCORDING TO : IEC-61340-5-1
R tray 10E9Ω-10E12Ω
- J 9. CONDITIONNEMENT SUIVANT SPEC : 107-15644 / 107-15645
PACKAGING ACCORDING SPEC :
- D 10. NUMERO DE MOULE
NUMBER OF THE MOULD



EN ACCORD AVEC LA SPEC D'INTERFACE:
 REN 8200 311 959 SAUF AUTRE SPECIFICATION
 ACCORDING TO INTERFACE
 REN 8200 311 959 EXCEPTED OTHER SPECIFICATION

N°	QTE	DESCRIPTION	MATIERE MATERIAL	FINITION FINISH
2	8	BROCHE TH PIN TH	CuSn6	PRE ETAME PRE TIN
1	1	BOITIER 8V 025 HOUSING 8POS 025	PCTGF30	-

THIS DRAWING IS A CONTROLLED DOCUMENT.		DWN R CHARLES 22-SEP-04	TE Connectivity	
DIMENSIONS: mm		CHK D REIFEL 22-SEP-04	EMBASE 8 VOIES 025 COUDEE	
TOLERANCES UNLESS OTHERWISE SPECIFIED:		APVD J LALANGE 01-OCT-04	025 8W RIGHT ANGLE HEADER	
±0.30		PRODUCT SPEC 108-15383	SIZE A2	CAGE CODE 00779
±		APPLICATION SPEC	DRAWING NO C-1379684	RESTRICTED TO
MATERIAL		WEIGHT 3.3g	SCALE 3:1	SHEET 1 OF 1
FINISH		CUSTOMER DRAWING	REV J	