

FCI CONFIDENTIAL

This document is the property of and contains CONFIDENTIAL and PROPRIETARY information of FCI. No part of the information shown on this document may be used in any way or disclosed to third parties without the written consent of FCI. Copyright © FCI

PRODUCT NUMBER  
10075024-X01-XXXLF

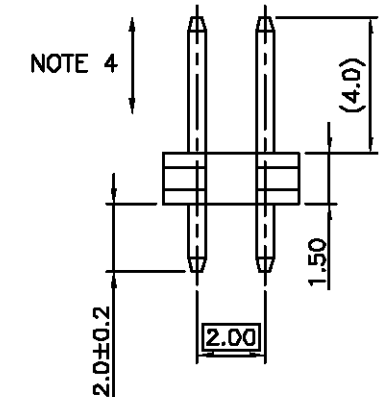
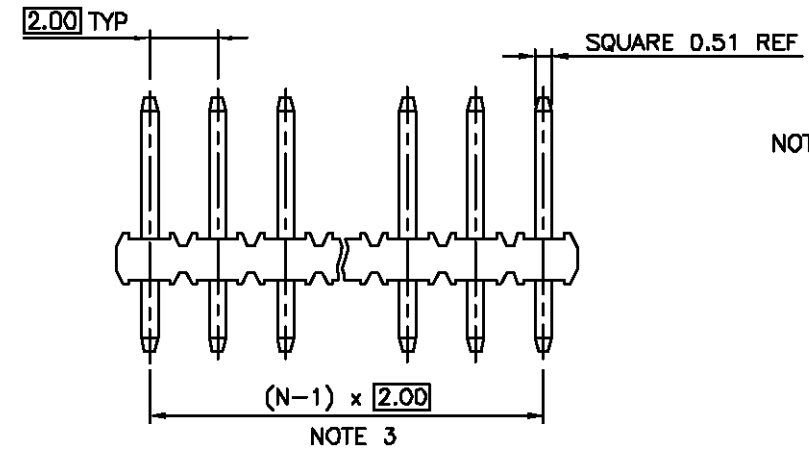
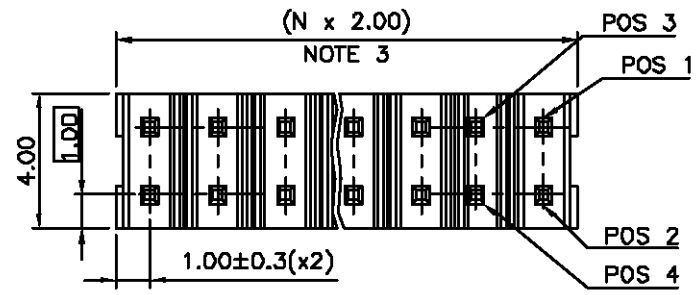
PLATING

- S = 0.38µm GOLD ON CONTACT AREA  
2µm MIN MATTE TIN ON TAIL  
OVER 1.27µm MIN NICKEL
- G = 0.76µm GOLD ON CONTACT AREA  
2µm MIN MATTE TIN ON TAIL  
OVER 1.27µm MIN NICKEL
- F = GOLD FLASH ON CONTACT AREA  
2µm MIN MATTE TIN ON TAIL  
OVER 1.27µm MIN NICKEL

LEAD FREE  
RoHS COMPATIBLE  
NOTE 6

PACKAGING  
NOTE 5

POSITIONS PER ROW  
02 TO 25  
SEE NOTE 9



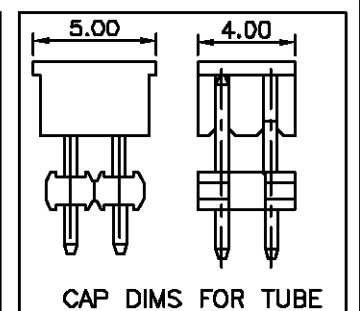
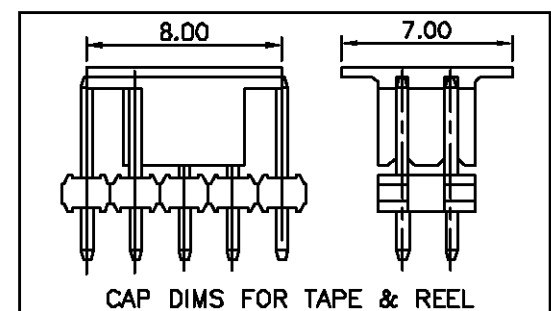
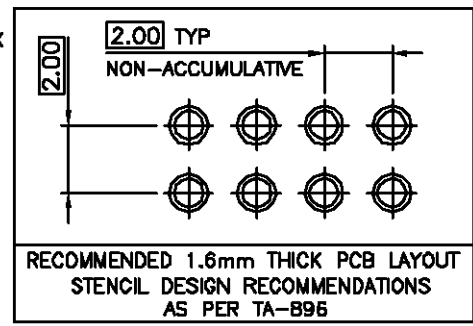
NOTES:

1. MATERIAL HOUSING: HIGH TEMP. THERMOPLASTIC UL 94V-0, COLOR BLACK
2. MATERIAL TERMINAL: COPPER ALLOY
3. TO DETERMINE DIMENSIONS:  
N = NUMBER OF POSITIONS PER ROW
4. 7N MIN. PIN RETENTION IN EITHER DIRECTION.
5. PACKAGING:  
= PLASTIC BOX  
U = TUBE WITHOUT PICK UP CAP  
AVAILABLE FROM 03 TO 25 POS PER ROW  
P = TUBE WITH PICK UP CAP  
AVAILABLE FROM 03 TO 25 POS PER ROW  
A = TAPE AND REEL WITH PICK UP CAP INSTALLED  
IN THE CENTER OF THE PRODUCT FOR PICK AND PLACE  
SEE TA B84 FOR PRODUCT AVAILABILITY.

6. RoHS COMPATIBLE PRODUCT SPECIFICATIONS

- a - PLATING:  
- "LF" MEANS THE PRODUCT IS LEAD-FREE,  
2µm MINIMUM MATTE TIN OVER 1.27µm  
MINIMUM NICKEL UNDERPLATE.
- b - MANUFACTURING PROCESS COMPATIBILITY  
- THE HOUSING WILL WITHSTAND EXPOSURE TO  
260°C PEAK TEMPERATURE FOR 30 SECONDS MAX  
IN A CONVECTION, INFRA-RED, OR VAPOR PHASE  
OR REFLOW OVEN
- c - LABELLING:  
- MEETS PACKAGING SPECS AS PER GS-14-920
- d - LEGAL STATEMENT: SEE GS-22-008

OPTIONAL LETTER FOR POLARIZED VERSION	MISSING PIN POSITION
A	ZD



mat'L code		surface	tolerance	projection	product family
		ISO 1912	ISO 106 ISO 150	M1	MINITEK
ltr	ecn no	dr	date	tolerances unless otherwise specified	
A	F08-0328	LMU	07.01.04	angles	.X ±0.3
B	F08-0188	LMU	08.05.05	linear	.XX ±0.13
C	F08-0148	ELA	08.05.19		.XXX ±0.05
D	F08-0228	LMU	08.09.22	dr	L.MULIN 07.01.04
				engr	J.COMPAGNON 07.01.04
				chr	
				appd	JM.C 07.01.04
sheet index	revision sheet				

title	UNSH HEADER 2.00 mm VERTICAL PIP
dwg no	10075024
sheet	1 of 1
size	A3
type	CUSTOMER Drawing