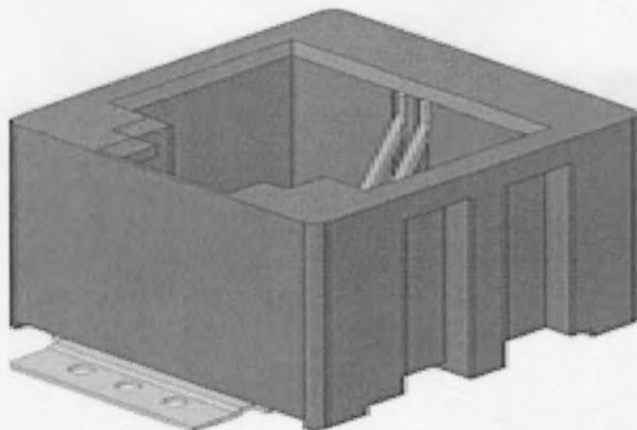




Get Drawing



100236FB002XX02XX

1.27 mm Pitch

Specification

Height Over Board

14.00mm

Low Profile

NO

Mating level till PCB (mm)

7.20mm

Solder Type

SMT

TYPE ( RJ45 / RJ12 / RJ45+RJ11 / COMBO) RJ11

With / Without LED

NO

With / Without Polarization

NO

With / Without Switch

NO

