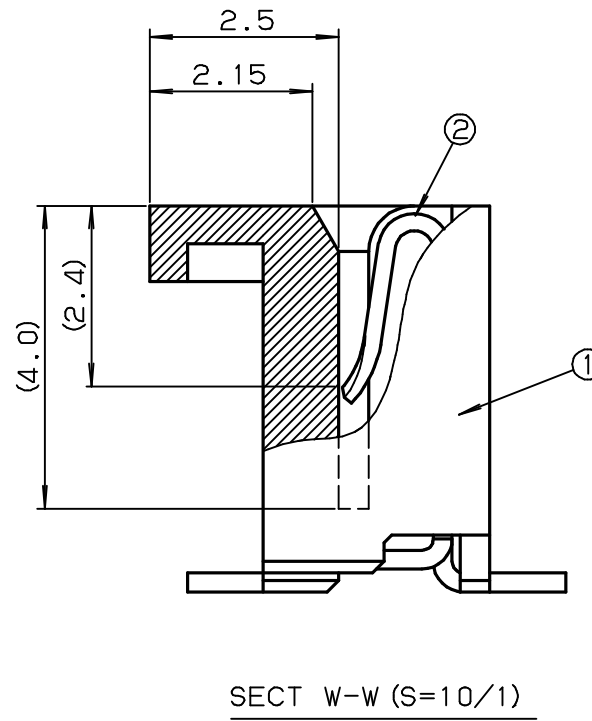
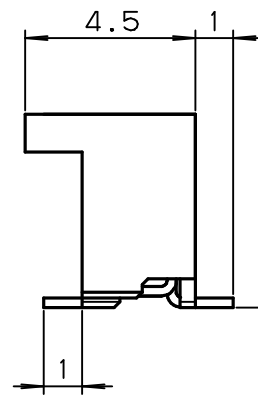
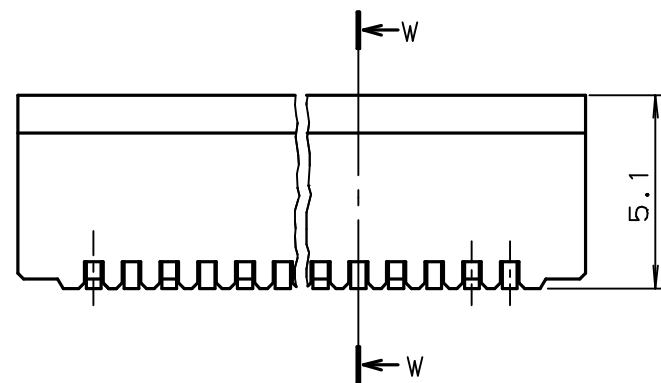
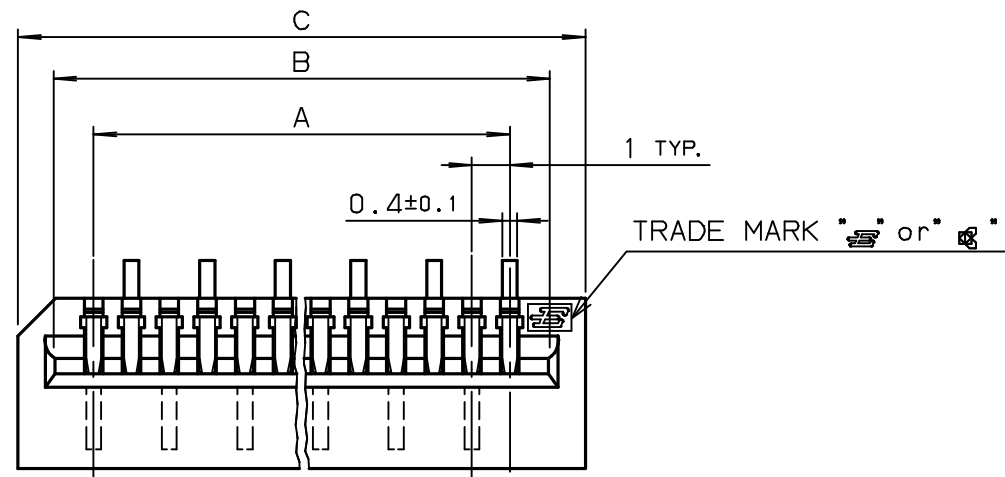


NO.	DESCRIPTION	PART NO.	QTY	MATERIAL	DRW NO.	REMARKS
1	INSULATOR		1	PPS		UL94V-0 COLOR :BLACK
2	CONTACT		N	PHOSPHOR BRONZE t=0.25 Sn-Cu		

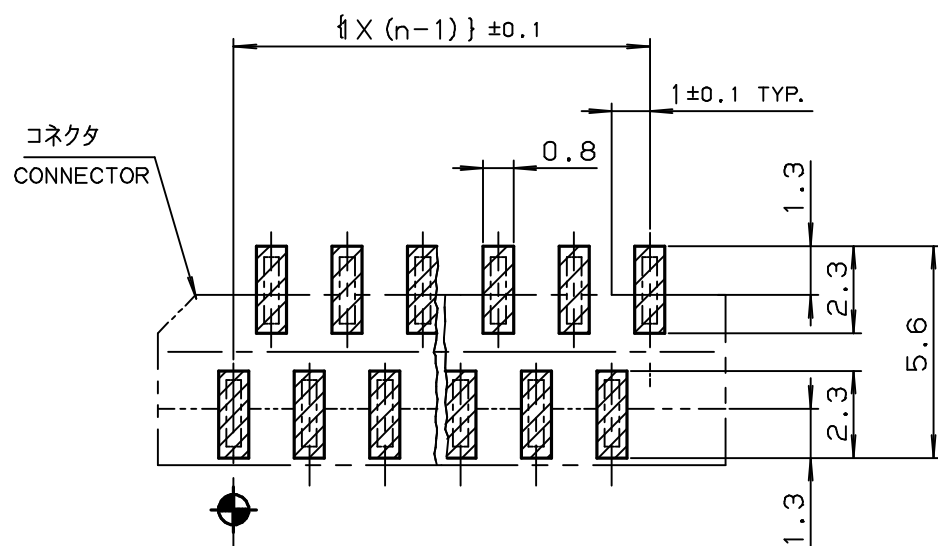


極数 NO. OF POS	A	B	C
3	2.0	4.1	6.0
4	3.0	5.1	7.0
5	4.0	6.1	8.0
6	5.0	7.1	9.0
7	6.0	8.1	10.0
8	7.0	9.1	11.0
9	8.0	10.1	12.0
10	9.0	11.1	13.0
11	10.0	12.1	14.0
12	11.0	13.1	15.0
13	12.0	14.1	16.0
14	13.0	15.1	17.0
15	14.0	16.1	18.0
16	15.0	17.1	19.0
17	16.0	18.1	20.0
18	17.0	19.1	21.0
19	18.0	20.1	22.0
20	19.0	21.1	23.0
21	20.0	22.1	24.0
22	21.0	23.1	25.0
23	22.0	24.1	26.0
24	23.0	25.1	27.0
25	24.0	26.1	28.0
26	25.0	27.1	29.0
27	26.0	28.1	30.0
28	27.0	29.1	31.0
29	28.0	30.1	32.0
30	29.0	31.1	33.0

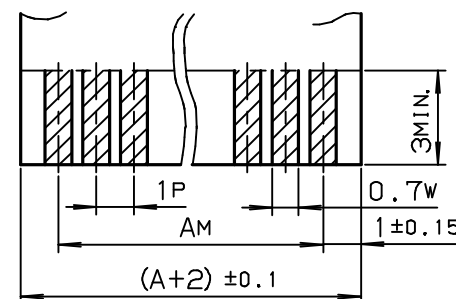
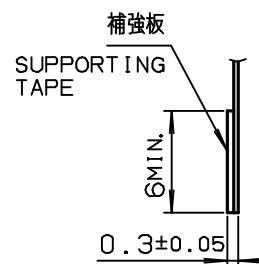
\*生産対応可能極数については、営業部に  
ご確認ください。  
PLEASE ASK SALES DEPARTMENT  
WHAT NUMBER OF CONTACT CAN  
BE PRODUCED.

注記 NOTE

①. コンタクトテールは基板より最大浮き  
0.1mmとする。  
CONTACT TAIL HEIGHT  
SHALL BE 0.1mm MAX.



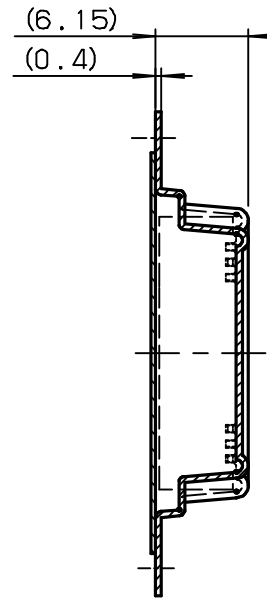
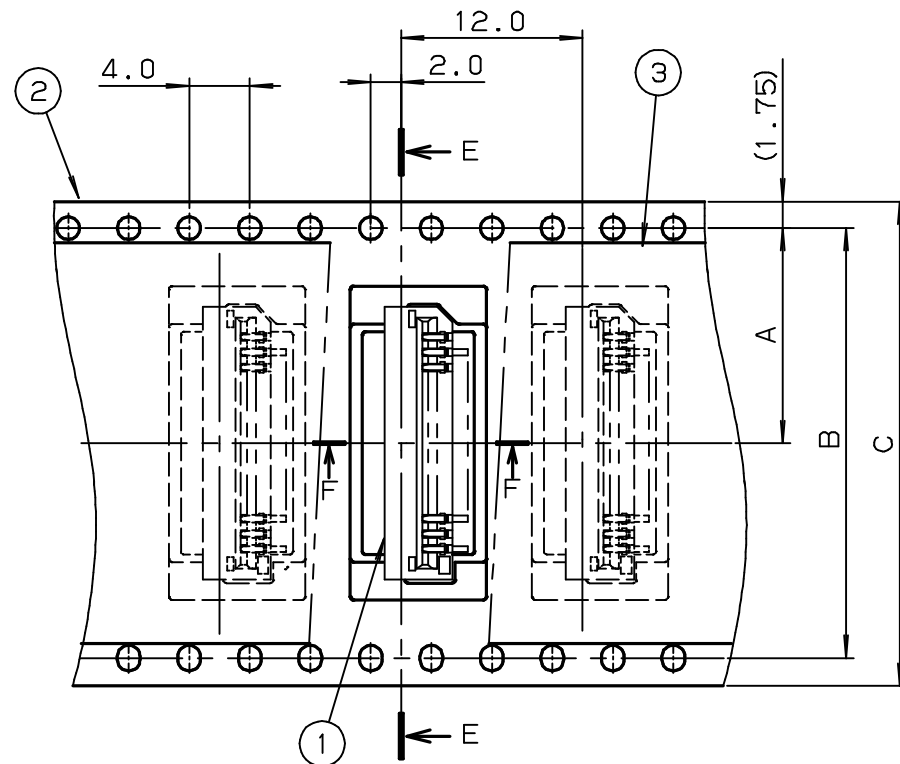
基板取付寸法 (コネクタ搭載側)  
MOUNTING LAYOUT



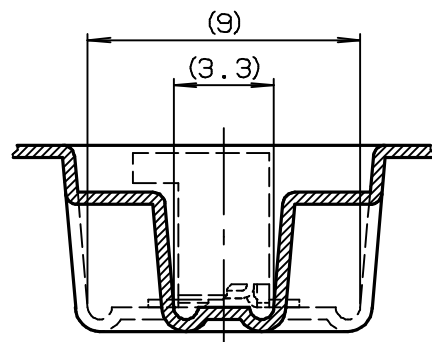
種類 KIND	公差 TOLERANCE		
	P	W	M
FPC	±0.02	+0.1 -0.05	±0.05
FFC	±0.05	±0.03	±0.1

適用 FPC/FFC  
APPLICABLE FPC/FFC

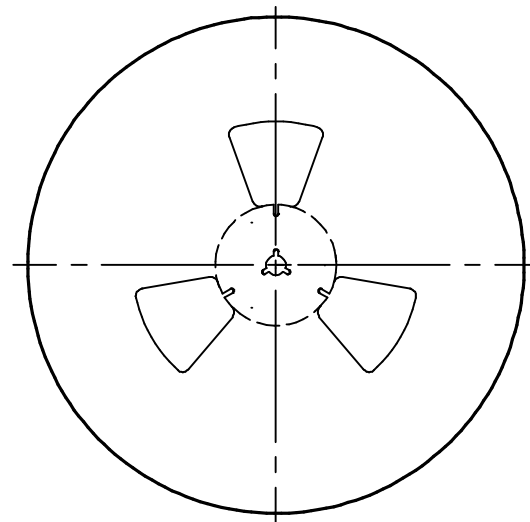
MATERIAL / 材質		PRODUCT SPEC / 製品規格								
FINISH / 仕上		TOLERANCE / 一般公差		0	EDN-797	10-10-03				
UNIT		ANGLE	SCALE	DATE	NO.	EDN/DCN	DATE	ISSUE	CHECKED	APPROVED
mm	3RD	5 / 1	10-10-03							
DRAWN		DESIGNED	CHECKED	APPROVED	PART NAME / 品名					
LI					SERIES 6232 FPC/FFC ASSY ST SMT LIF (WITH FLANGE)					
DRAWN		DESIGNED	CHECKED	APPROVED	PART NO. / 型番					
LI					00 6232 1XX 007 800 +					
KYOCERA		KYOCERA ELCO CORPORATION		DWG NO. / 図番		BJS 6232180		SHEET / REV		1 / 1 0



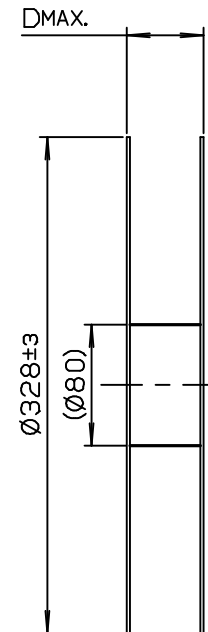
SECT. E-E



SECT. F-F  
(S=4/1)



REEL

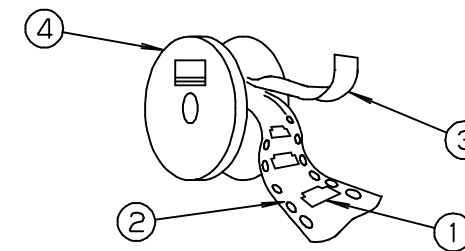


NO.	DESCRIPTION	PART NO.	QTY	MATERIAL	DRW NO.	REMARKS
1	CONNECTOR	00 6232 1XX 007 800 +	900			
2	EMBOSSED TAPE		1	POLYSTYRENE		
3	TOP COVER TAPE		1	POLYSTYRENE		
4	REEL		1	CORRUGATED CARDBOARD OR POLYSTYRENE		

製品の有無 SUPPLY	極数 NO. OF POS.	A	B	C	D
○	8	11.5	—	24	30.4
	9	11.5	—	24	30.4
○	10	11.5	—	24	30.4
○	11	14.2	28.4	32	38.4
○	12	14.2	28.4	32	38.4
	13	14.2	28.4	32	38.4
	14	14.2	28.4	32	38.4
○	15	14.2	28.4	32	38.4
	16	14.2	28.4	32	38.4
○	17	14.2	28.4	32	38.4
○	18	14.2	28.4	32	38.4
○	19	20.2	40.4	44	50.4
○	20	20.2	40.4	44	50.4
○	21	20.2	40.4	44	50.4
○	22	20.2	40.4	44	50.4
○	23	20.2	40.4	44	50.4
○	24	20.2	40.4	44	50.4
	25	20.2	40.4	44	50.4
○	26	26.2	52.4	56	62.4
	27	26.2	52.4	56	62.4
	28	26.2	52.4	56	62.4
	29	26.2	52.4	56	62.4
	30	26.2	52.4	56	62.4

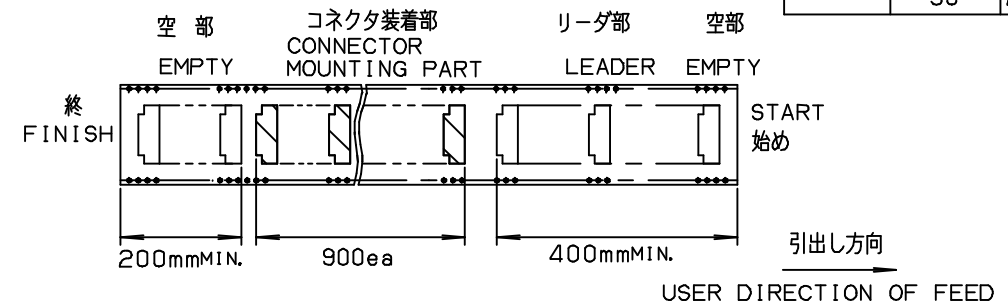
注記 NOTE

- 納入数量 : 900 個/reel  
QUANTITY : 900 ea/reel
- 納入時のリール巻き方向  
REELING DIRECTION  
IN DELIVERY



3. 引出し方向

USER DIRECTION OF FEED



4. 型番構成 P/N

04 6232 0XX 010 000 +

極数  
NO. OF POS.

MATERIAL / 材質		PRODUCT SPEC / 製品規格					
FINISH / 仕上		TOLERANCE / 一般公差		0 EDN-796	10-10-03		
UNIT		ANGLE	SCALE	DATE			
mm		3RD	2 / 1	10-10-03			
DRAWN	DESIGNED	CHECKED	APPROVED	PART NAME / 品名			
LI				SERIES 6232 FPC/FFC ASSY ST SMT TAPING (WITH FLANGE)			
DRAWN				PART NO. / 型番			
LI				04 6232 0XX 010 000 +			
DWG NO. / 図番				SHEET / REV			
KYOCERA ELCO CORPORATION				BJS 6232175			
				1/1 0			